

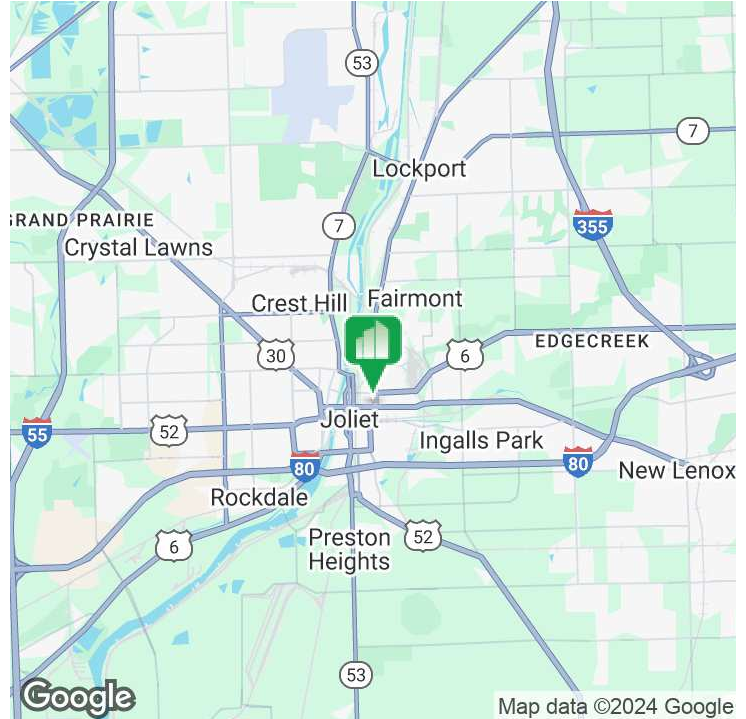
Retail Property For Lease



DOWNTOWN JOLIET RETAIL CENTER

121 -131 COLLINS ST, JOLIET, IL 60432

DOWNTOWN JOLIET RETAIL CENTER



OFFERING SUMMARY

Available SF: 1,200 SF

Lease Rate: Contact Broker

Pass-Thrus (NNN): \$8/SF

Lot Size: 0.58 Acres

Building Size: 8,464 SF

PROPERTY HIGHLIGHTS

- Co-tenants include Subway, Archi Beauty Salon and Rise Up For Autism center
- Located at the Cass Street (US Highway 30 / Collins Street (US Highway 6) intersection in downtown Joliet
- Building adjacent to Walgreens
- Monument Signage Available

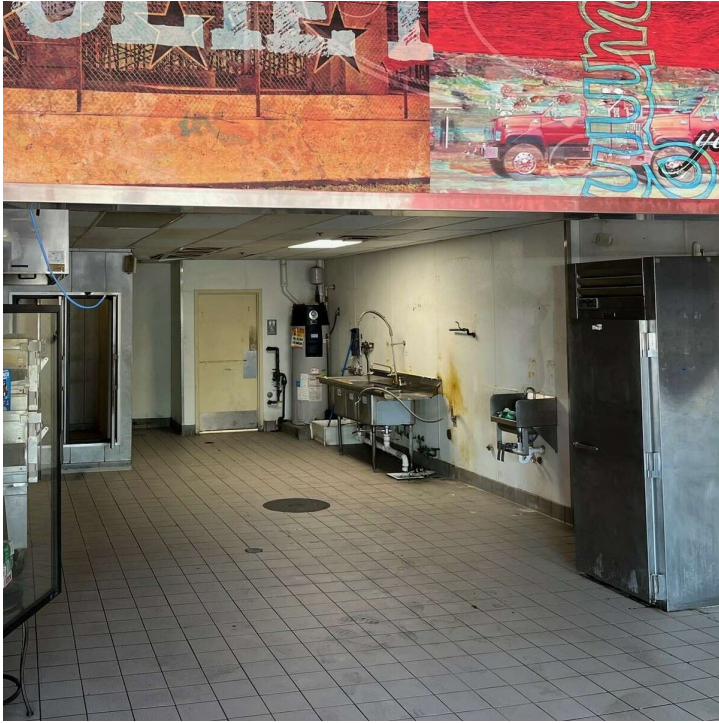
LOCATION OVERVIEW

Building located adjacent to Joliet Central High School. Area retailers include McDonald's, Burger King, Family Dollar, Auto Zone, T-Mobile, Dollar Tree, Little Caesars and more.

DEMOGRAPHICS

	1 MILE	3 MILES	5 MILES
Total Households	5,840	29,636	53,611
Total Population	17,843	83,569	147,234
Average HH Income	\$61,126	\$74,936	\$90,070

DOWNTOWN JOLIET RETAIL CENTER



DOWNTOWN JOLIET RETAIL CENTER

