

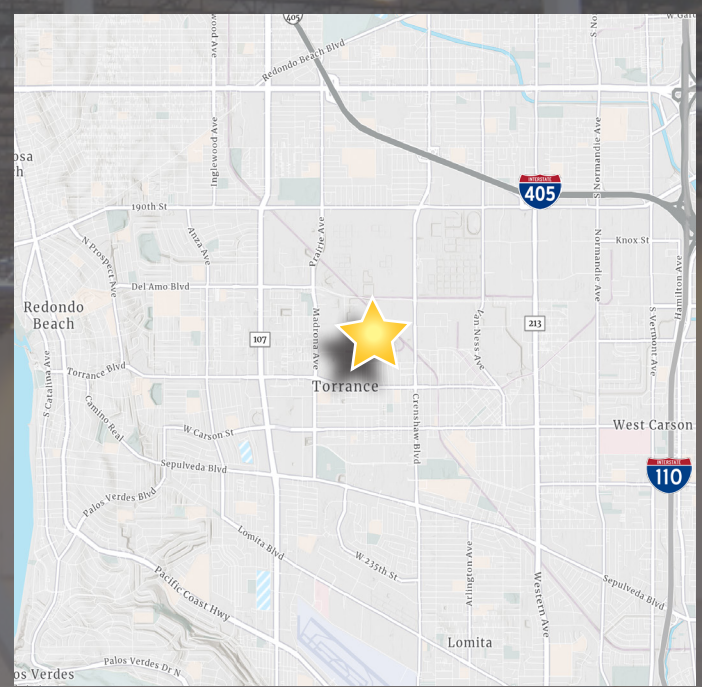


2610 Columbia Street Unit A & B Torrance, CA 90503

- Central Torrance Location
- Like New Building Exterior
- Undergoing Refurbishment
- High efficiency T-5 Lighting in Warehouse
- Upgraded ESFR Sprinklers
- 2 DH / 2 GL Truck Doors
- Power - 400 Amps
- Professionally Owned & Managed by First Industrial Realty Trust

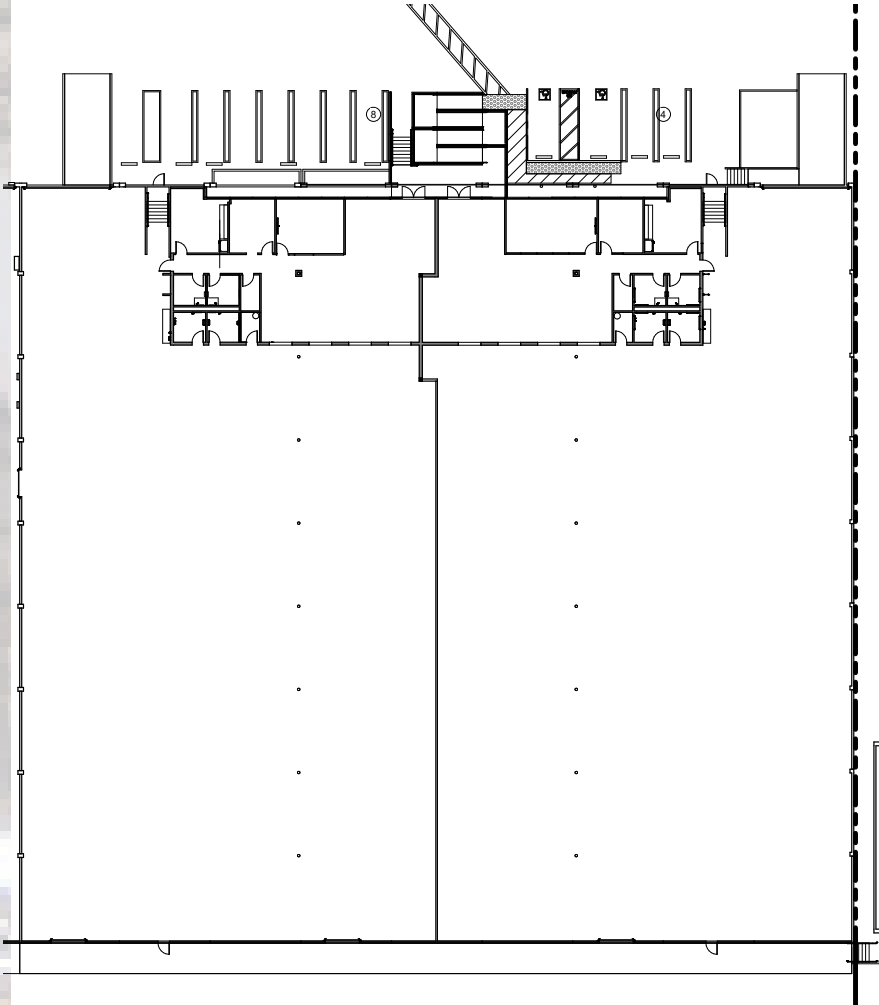
Highlights

Available Space:	±44,330 SF
Building SF:	±95,353 SF
Office Space:	±5,500 SF
Clear Height:	20'
Loading Doors:	2 DH / 2 GL
Parking Ratio:	TBD
Power:	400 Amps 277- 480 Volts



2610 Columbia Street Unit A & B
Torrance, CA 90503

Site Plan



Broker Contact:

JEFF SMART

Senior Executive Vice President
License No. 00918873
+1 310 321 1812
jeffrey.smart@colliers.com

ELIZABETH CAPATI

Senior Associate
License No. 02109628
+1 310 321 1855
elizabeth.capati@colliers.com

2141 Rosecrans Avenue
Suite 1120
El Segundo, CA 90245
www.colliers.com



Owner Contact:

JERRY DEVON

Marketing & Leasing Director
898 N. Pacific Coast Highway | Suite 175
El Segundo, CA 90245
Direct: +1 (424) 220-9212
gdevon@firt.com



www.firstindustrial.com