

4224 MARTIN ROAD
COMMERCE TWP., MICHIGAN

INDUSTRIAL FOR LEASE
10,000 Square Feet Available

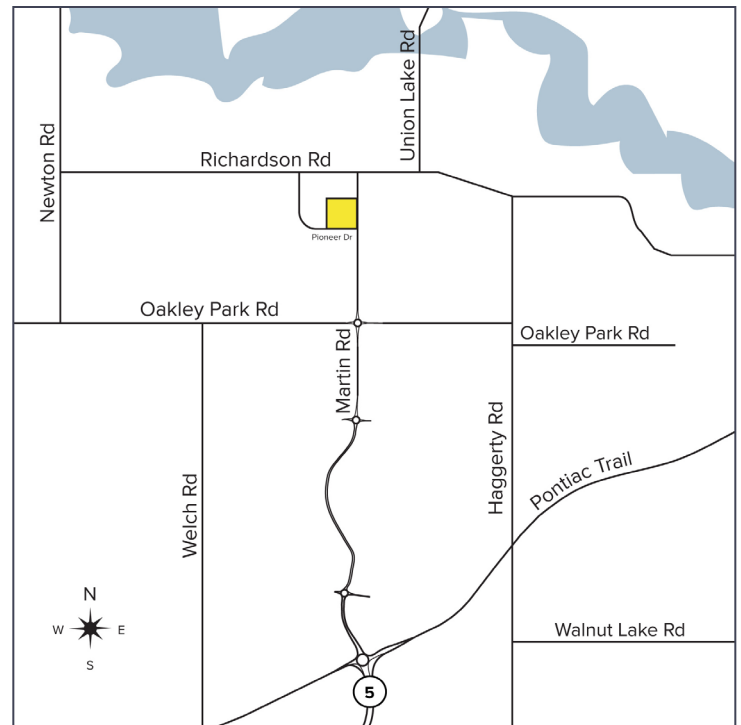


**SIGNATURE
ASSOCIATES**
KNOW SIGNATURE | KNOW RESULTS



PROPERTY FEATURES

- 10,000 square feet available
- 1,872 square feet office
- 18' clear height
- (2) 12' x 14' grade level doors
- Frontage on Martin Parkway (M-5 Extension)
- Clear span warehouse includes buss duct, mezzanine, and heavy power
- Originally designed to be a duplex - restrooms on both sides of proposed demising wall
- Lease Rate: Contact Broker



For more information, please contact:

JEFF LEMANSKI
(248) 359 0641
jlemanski@signatureassociates.com

SIGNATURE ASSOCIATES
One Towne Square, Suite 1200
Southfield, MI 48076
www.signatureassociates.com

4224 Martin Road – Commerce Twp., Michigan

Industrial For Lease

10,000
Square Feet
AVAILABLE

Interior Photos



For more information, please contact:

JEFF LEMANSKI
(248) 359 0641
jlemanski@signatureassociates.com

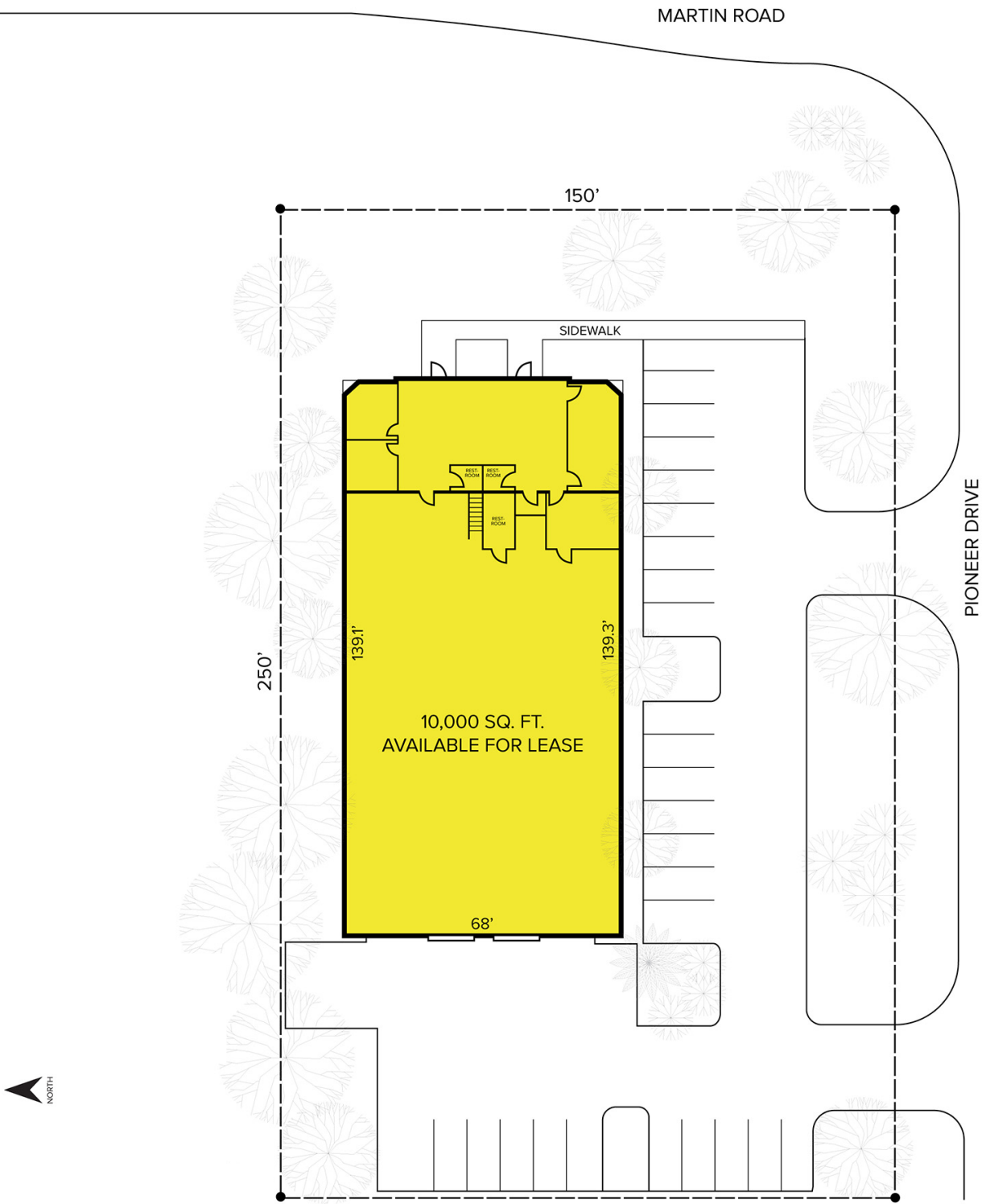
SIGNATURE ASSOCIATES
One Towne Square, Suite 1200
Southfield, MI 48076
www.signatureassociates.com

4224 Martin Road – Commerce Twp., Michigan

Industrial For Lease

10,000
Square Feet
AVAILABLE

Site Plan



For more information, please contact:

JEFF LEMANSKI
(248) 359 0641
jlemanski@signatureassociates.com

SIGNATURE ASSOCIATES
One Towne Square, Suite 1200
Southfield, MI 48076
www.signatureassociates.com

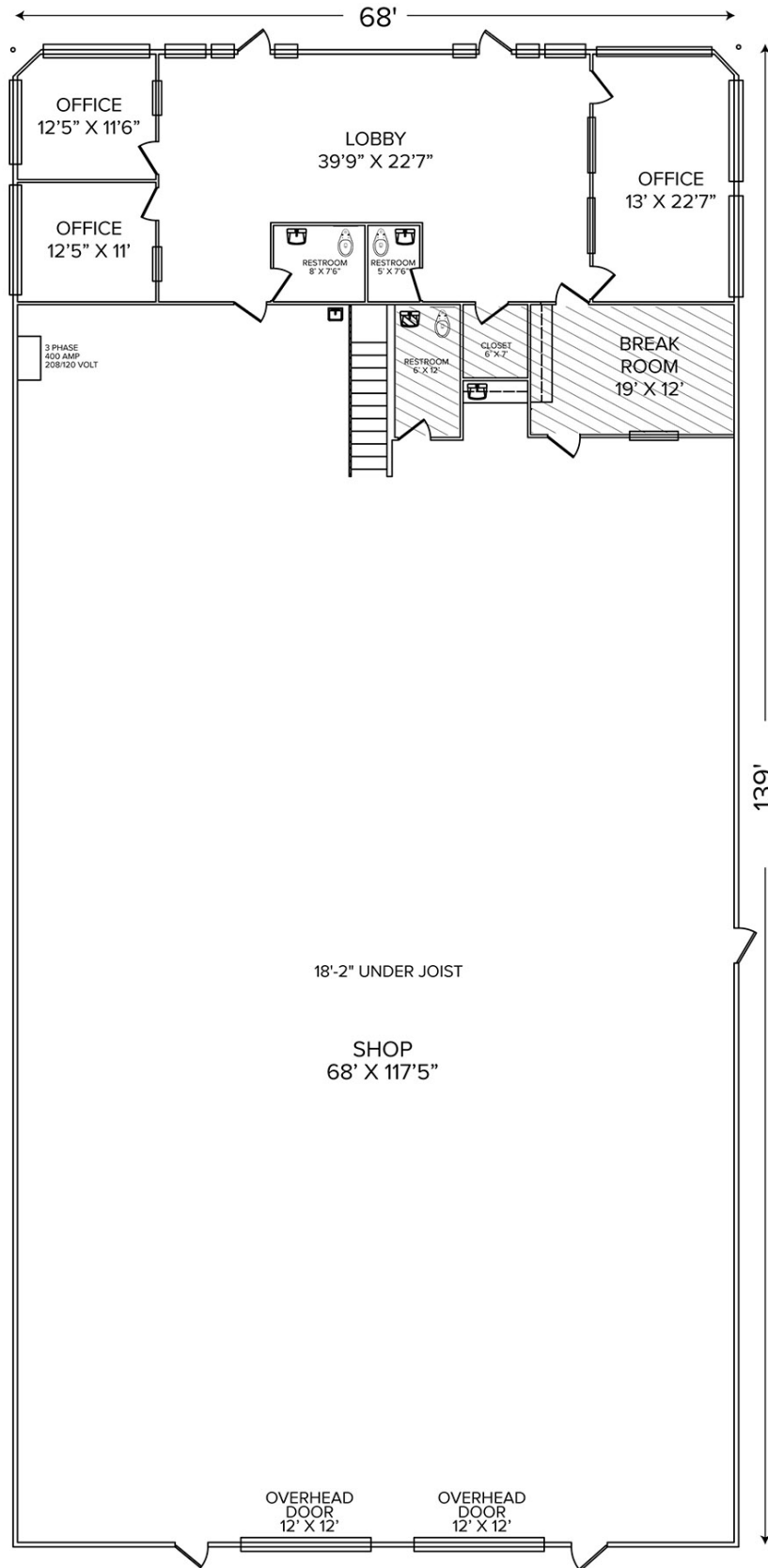
Information is subject to verification and no liability for errors or omissions is assumed. Price is subject to change and listing withdrawal.

4224 Martin Road – Commerce Twp., Michigan

Industrial For Lease

10,000
Square Feet
AVAILABLE

Floor Plan



 = MEZZANINE



For more information, please contact:

JEFF LEMANSKI
(248) 359 0641
jlemanski@signatureassociates.com

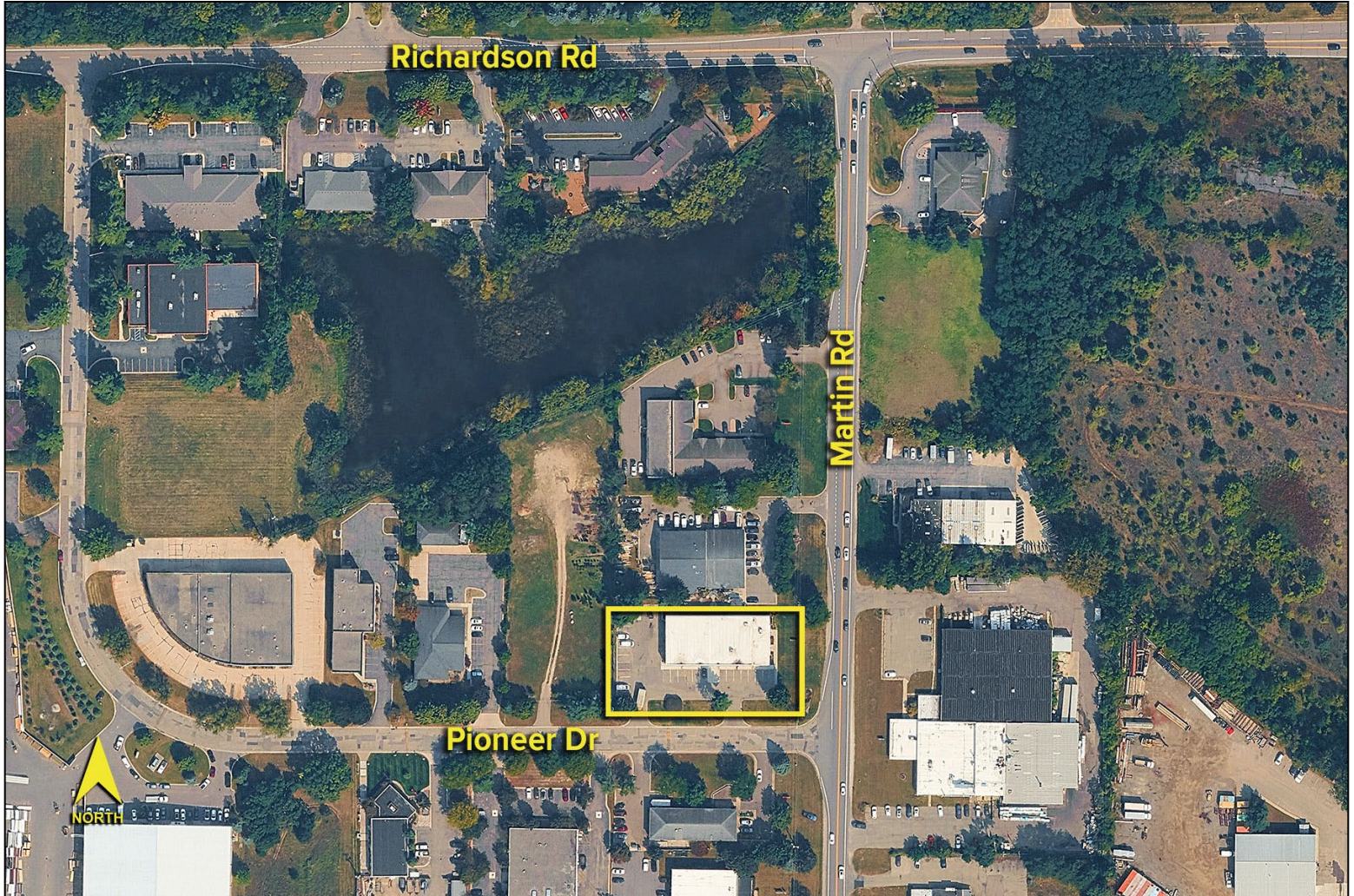
SIGNATURE ASSOCIATES
One Towne Square, Suite 1200
Southfield, MI 48076
www.signatureassociates.com

4224 Martin Road – Commerce Twp., Michigan

Industrial For Lease

10,000
Square Feet
AVAILABLE

Aerial



For more information, please contact:

JEFF LEMANSKI
(248) 359 0641
jlemanski@signatureassociates.com

SIGNATURE ASSOCIATES
One Towne Square, Suite 1200
Southfield, MI 48076
www.signatureassociates.com