

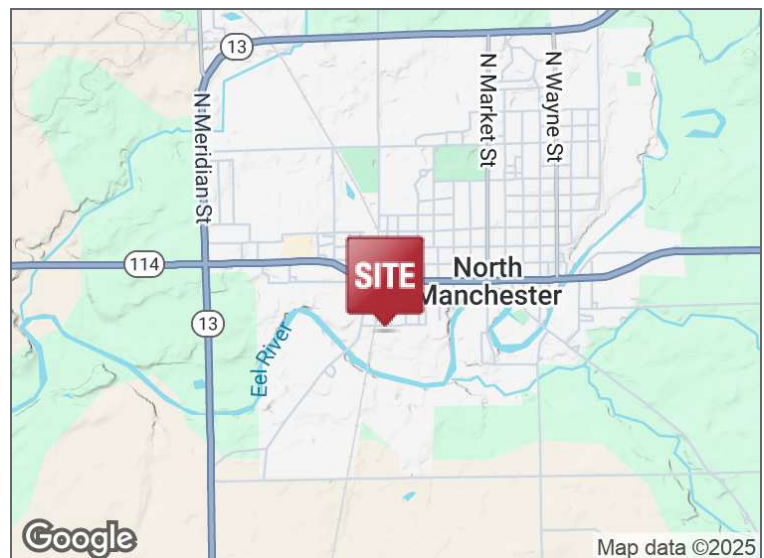


## **NORTH MANCHESTER INDUSTRIAL**

801 WEST SOUTH STREET, NORTH MANCHESTER, INDIANA 46962

### **PROPERTY HIGHLIGHTS**

- Steel frame industrial building in good condition
- Open bay spacing with 14' - 16' ceilings
- 100% Wet sprinklered
- 2000A, 277/480V, 3P, 4 Wire with buss ducts throughout
- Competitive lease rate



200 E. Main Street, Suite 580  
Fort Wayne, IN 46802  
260.422.2150 (o)  
260.422.2169 (f)

**IAN DEISER**  
Broker  
260.452.5153  
ian@naihb.com

**GARY BUSCHMAN, SIOR**  
Broker  
260.348.2769  
gary@naihb.com

**RACHEL ROMARY**  
Broker  
260.341.0230  
rromary@naihb.com

General Property Information			
<b>Name</b>	North Manchester Industrial	<b>Parcel Number</b>	85-07-05-103-040.000-002
<b>Address</b>	801 W. South Street	<b>Total Building SF</b>	68,104 SF
<b>City, State, Zip</b>	North Manchester, IN 46962	<b>Acreage</b>	6.4 AC
<b>County</b>	Wabash	<b>Year Built</b>	1965, 1978
<b>Township</b>	Chester	<b>Zoning</b>	I-1
<b>Parking</b>	Surface	<b>Parking Spaces</b>	Ample
Property Features			
<b>Construction Type</b>	Steel frame	<b>Number of Floors</b>	1
<b>Roof</b>	Insulated metal panels	<b>Foundation</b>	Concrete slab
<b>Floor</b>	Concrete	<b>Lighting</b>	Fluorescent, metal halide
<b>Bay Spacing</b>	Open	<b>Sprinklers</b>	100% Wet
<b>Ceiling Heights</b>	14' - 16'	<b>Electrical</b>	2000A, 277/480V, 3P, 4 Wire with buss ducts throughout
<b>Dock Doors</b>	3 @ 8'x9' w/bumpers & levelers	<b>Heating</b>	Suspended gas fired units
<b>Overhead Doors</b>	1 @ 12'x14'	<b>Central Air</b>	No
<b>Rail Access</b>	No	<b>Restrooms</b>	Yes
Utilities		Major Roads	
<b>Electric</b>	NIPSCO	<b>Nearest Interstate</b>	SR-13—3 miles
<b>Gas</b>	NIPSCO	<b>Nearest Highway</b>	SR-114
<b>Water/Sewer</b>	North Manchester Public Works		
Lease Information			
<b>Available SF</b>	43,710 SF	<b>Lease Rate/Type</b>	\$2.50-\$3.25 NNN
Expenses			
<b>Type</b>	<b>Price per SF (estimate)</b>	<b>Responsible Party (Landlord/Tenant)</b>	
<b>Taxes</b>	\$0.13	Tenant	
<b>CAM Fee</b>	\$0.20	Tenant	
<b>Insurance</b>	\$0.10	Tenant	
<b>Maint./Repairs</b>		Tenant	
<b>Roof /Structure</b>		Landlord	
<b>Utilities</b>		Tenant	
<b>Total Expenses</b>	\$0.43		

200 E. Main Street, Suite 580  
Fort Wayne, IN 46802  
260.422.2150 (o)  
260.422.2169 (f)

**IAN DEISER**  
Broker  
260.452.5153  
ian@naihb.com

**GARY BUSCHMAN, SIOR**  
Broker  
260.348.2769  
gary@naihb.com

**RACHEL ROMARY**  
Broker  
260.341.0230  
rromary@naihb.com



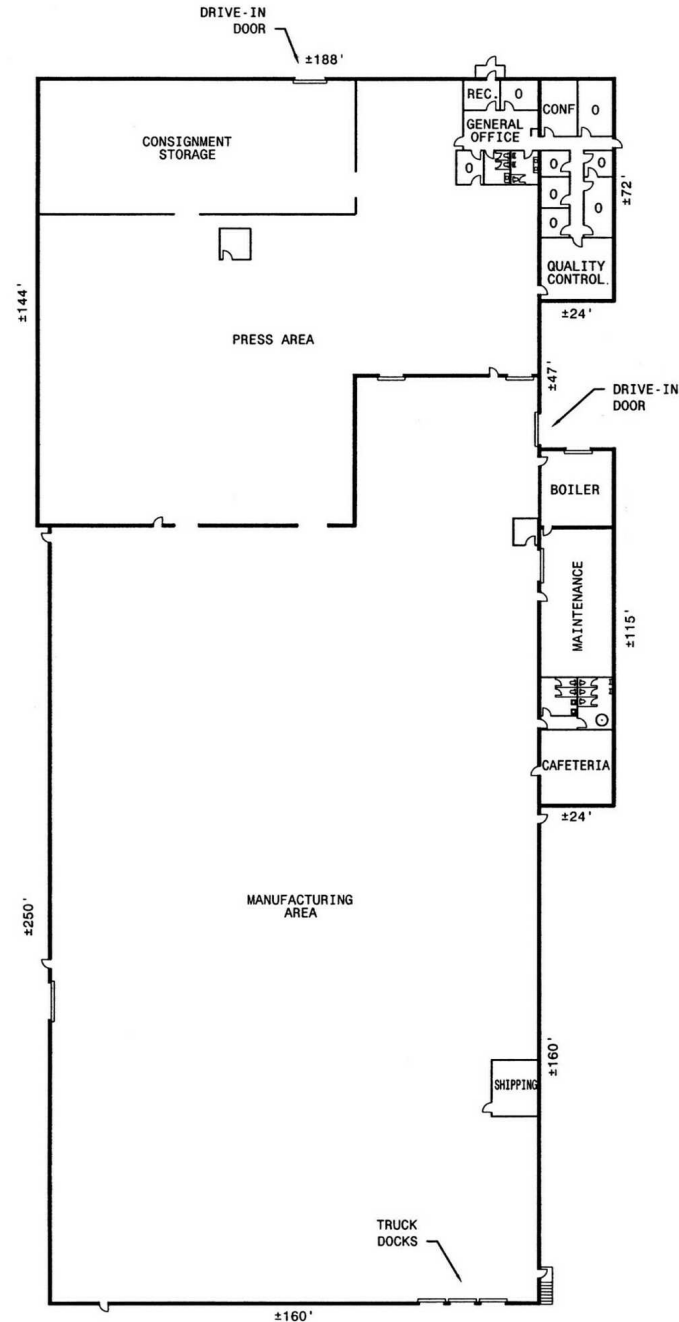


200 E. Main Street, Suite 580  
Fort Wayne, IN 46802  
260.422.2150 (o)  
260.422.2169 (f)

**IAN DEISER**  
Broker  
260.452.5153  
ian@naihnb.com

**GARY BUSCHMAN, SIOR**  
Broker  
260.348.2769  
gary@naihnb.com

**RACHEL ROMARY**  
Broker  
260.341.0230  
rromary@naihnb.com

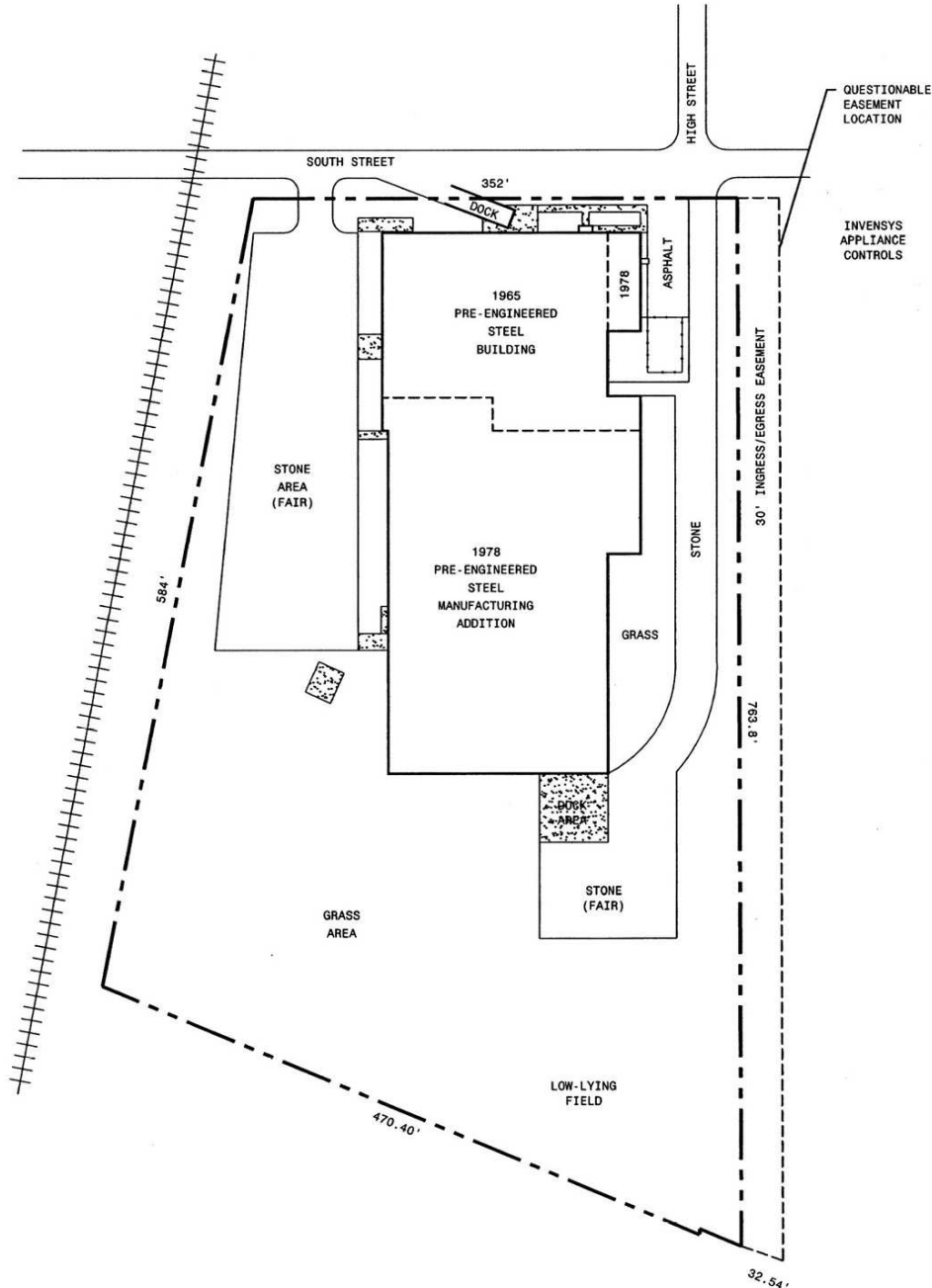


200 E. Main Street, Suite 580  
Fort Wayne, IN 46802  
260.422.2150 (o)  
260.422.2169 (f)

**IAN DEISER**  
Broker  
260.452.5153  
ian@naihnb.com

**GARY BUSCHMAN, SIOR**  
Broker  
260.348.2769  
gary@naihnb.com

**RACHEL ROMARY**  
Broker  
260.341.0230  
rromary@naihnb.com



200 E. Main Street, Suite 580  
Fort Wayne, IN 46802  
260.422.2150 (o)  
260.422.2169 (f)

**IAN DEISER**  
Broker  
260.452.5153  
ian@naihnb.com

**GARY BUSCHMAN, SIOR**  
Broker  
260.348.2769  
gary@naihnb.com

**RACHEL ROMARY**  
Broker  
260.341.0230  
rromary@naihnb.com





POPULATION	100 MILES	250 MILES	500 MILES
Total Population	6,392,148	45,611,929	99,366,660
Average Age	40	41	41
Average Age (Male)	39	40	40
Average Age (Female)	41	42	42
HOUSEHOLDS & INCOME	100 MILES	250 MILES	500 MILES
Total Households	2,515,950	18,300,801	39,883,661
# of Persons per HH	2.5	2.5	2.5
Average HH Income	\$95,123	\$101,413	\$100,522
Average House Value	\$258,418	\$290,968	\$301,351

Demographics data derived from AlphaMap

200 E. Main Street, Suite 580  
Fort Wayne, IN 46802  
260.422.2150 (o)  
260.422.2169 (f)

**IAN DEISER**  
Broker  
260.452.5153  
ian@naihb.com

**GARY BUSCHMAN, SIOR**  
Broker  
260.348.2769  
gary@naihb.com

**RACHEL ROMARY**  
Broker  
260.341.0230  
rromary@naihb.com