



EXCEPTIONAL COMMERCIAL REDEVELOPMENT SITE FOR SALE

5665 W. State Road 46
Ellettsville, IN 47404

Total Acres +/-5.62

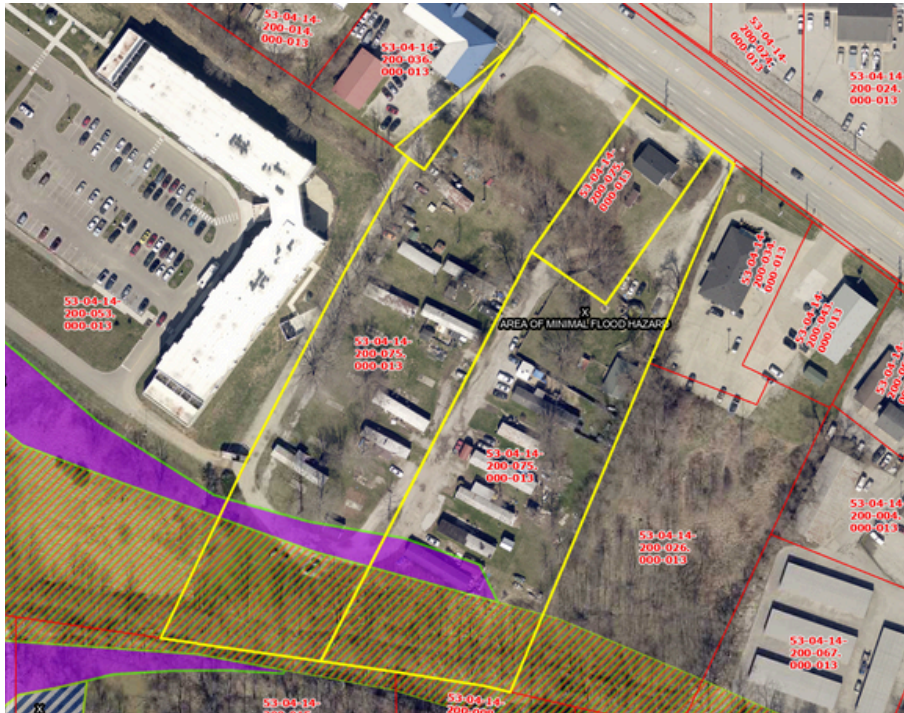
Zoning General Commercial District (C-2)

Annual Taxes \$7,452

Price **\$1,495,000**

- ±5.62 acres with redevelopment potential
- Current use: Mobile home park
- Excellent frontage and visibility on State Road 46
- Strong growth corridor with nearby residential and commercial activity
- Convenient access to downtown Ellettsville and Bloomington
- Back of the property is in flood zone shown on next page





Additional Online information:
Cockerhamcommercial.com
ICREX.com
Homefinder.org
Loopnet.com
Crexi.com

CHRIS COCKERHAM, CPM, GRI - COMMERCIAL MANAGER/BROKER
 F.C. TUCKER/BLOOMINGTON, REALTORS®
 COCKERHAM COMMERCIAL REAL ESTATE & CONSULTING
 487 S. CLARIZZ BLVD. BLOOMINGTON, IN 47401
 DIRECT: (812) 340-3083 - CHRIS@COCKERHAM.US
WWW.COCKERHAMCOMMERCIAL.COM
 Indiana RE Broker #RB14027897 Indiana Auctioneer License #AU12000060



WWW.COCKERHAMCOMMERCIAL.COM
 (812) 330-7568

