



W E L C O M E T O H A R B O R P O I N T

2187

ATLANTIC / STREET

STAMFORD, CONN.



NEWMARK

HARBOR POINT LIVE. WORK. PLAY.



2+

Miles of
waterfront
boardwalk

4

Marinas



15+

Restaurants



20+

Acres of actively
programmed parks

4K+

Apartments



Contact Exclusive Brokers:

BENJAMIN GOLDSTEIN

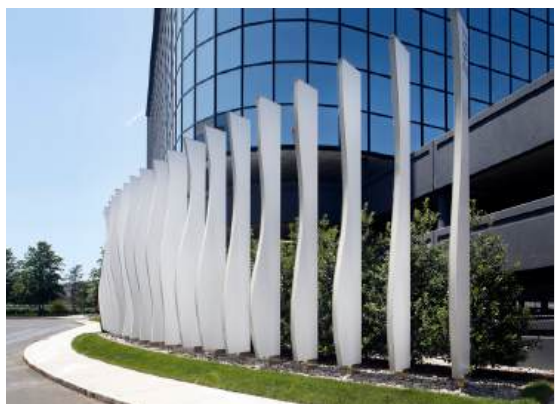
914-610-5954 | benjamin.goldstein@nmrk.com

CORY GUBNER

203-531-3626 | cory.gubner@nmrk.com

NEWMARK

2187



PROPERTY HIGHLIGHTS

Located in the heart of Harbor Point
Surrounded by retail & restaurants
5 minute walk to train, 53-minute ride to NYC
Spectacular water views
Shuttle rides to the train station
Fully equipped fitness center

AVAILABLE SPACES

Partial 4th 7,599 SF (divisible)
High-end 2nd generation buildout

Entire 8th 18,073 SF (divisible)
High-end 2nd generation buildout

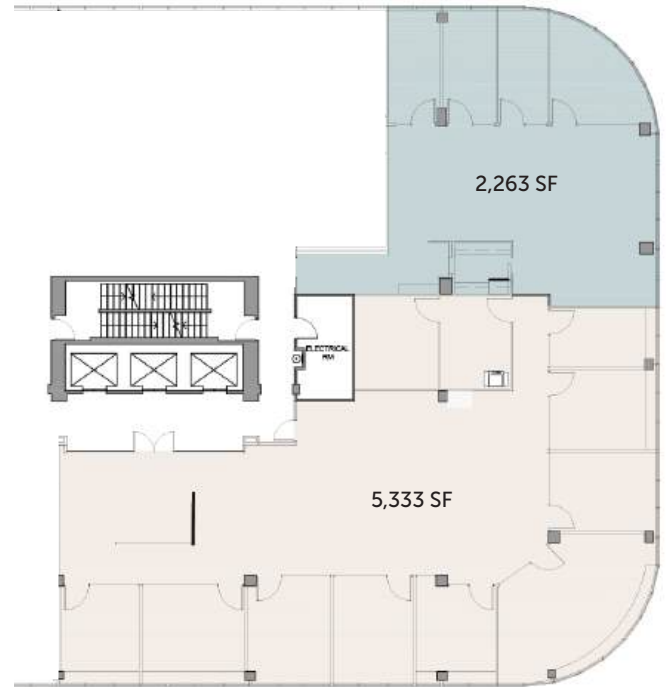
BRAND NEW MODERN LOBBY



PARTIAL 4TH FLOOR: 7,599 SF (HIGH-END 2ND GENERATION BUILDOUT)



EXISTING CONDITIONS



POTENTIAL DIVISIBILITY

Contact Exclusive Brokers:

BENJAMIN GOLDSTEIN
914-610-5954 | benjamin.goldstein@nmrk.com

CORY GUBNER
203-531-3626 | cory.gubner@nmrk.com

NEWMARK

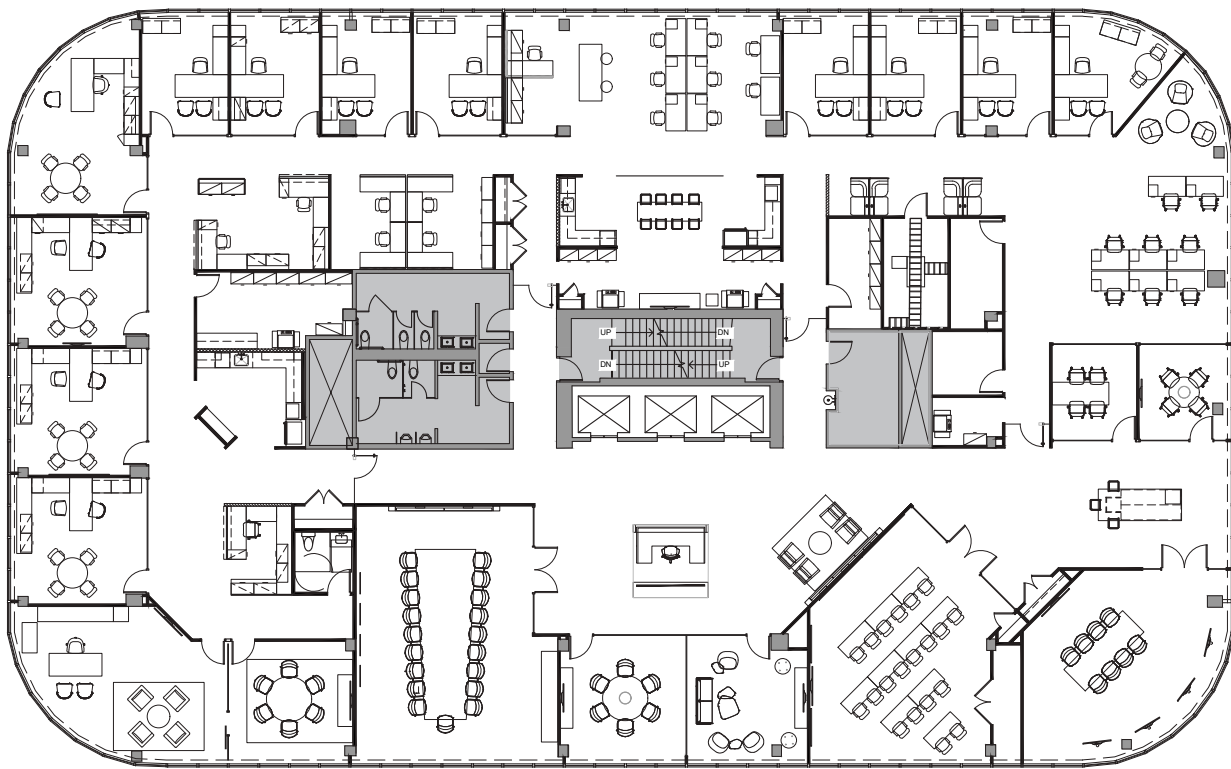
PRE-BUILD FINISHES



PRE-BUILD FINISHES



ENTIRE 8TH FLOOR: 18,073 SF (HIGH-END 2ND GENERATION BUILDOUT)



EXISTING CONDITIONS

Contact Exclusive Brokers:

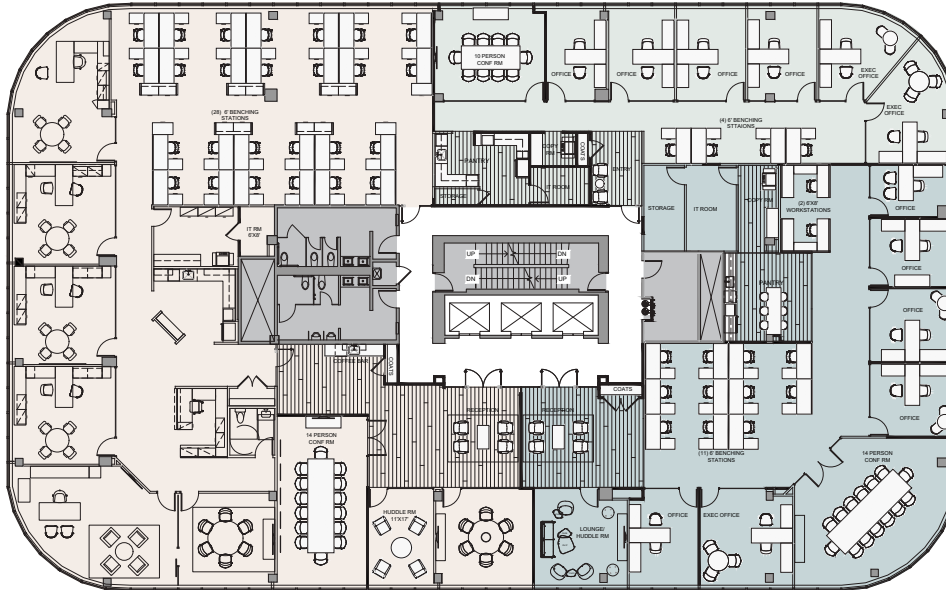
BENJAMIN GOLDSTEIN
914-610-5954 | benjamin.goldstein@nmrk.com

CORY GUBNER
203-531-3626 | cory.gubner@nmrk.com

NEWMARK

ENTIRE 8TH FLOOR: 18,073 SF (POTENTIAL DEMISING / LAYOUTS)

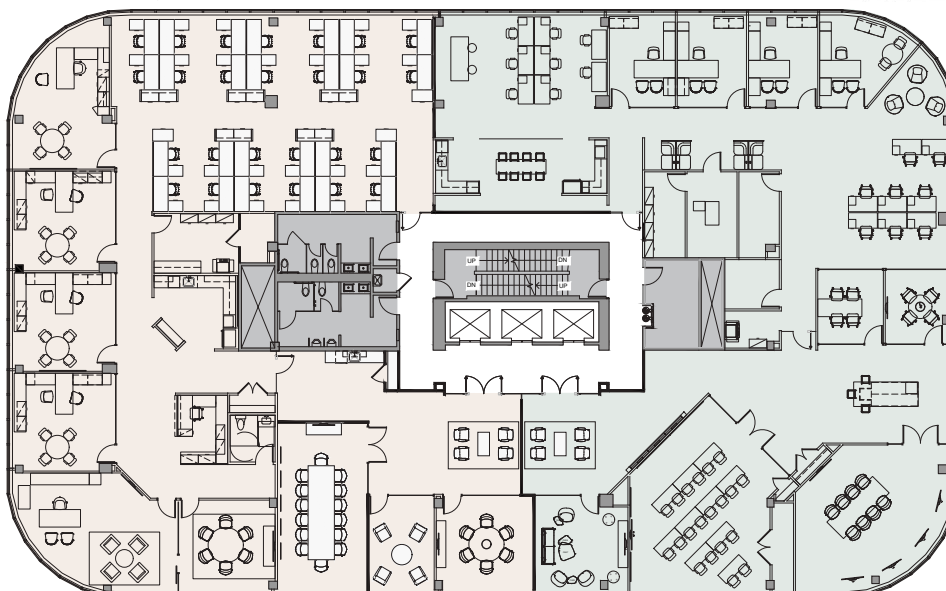
SUITE 801
9,061 SF



SUITE 802
3,442 SF

SUITE 803
5,662 SF

SUITE 801
9,061 SF



SUITE 803
9,104 SF

Contact Exclusive Brokers:

BENJAMIN GOLDSTEIN
914-610-5954 | benjamin.goldstein@nrmk.com

CORY GUBNER
203-531-3626 | cory.gubner@nrmk.com

NEWMARK

EIGHT FLOOR PHOTOS

