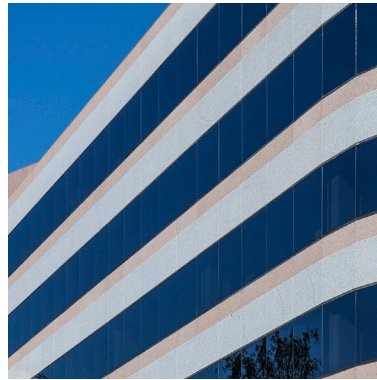
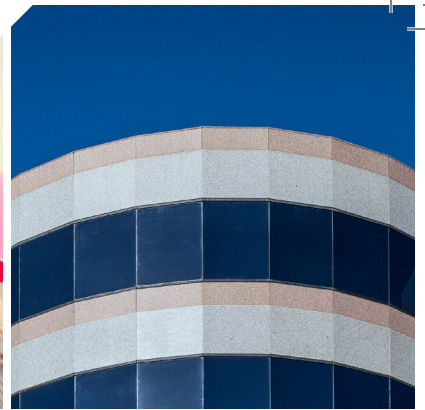




2100
RESTON



▶ GET IN ON RESTON'S MOST
CONVENIENT LUXURY

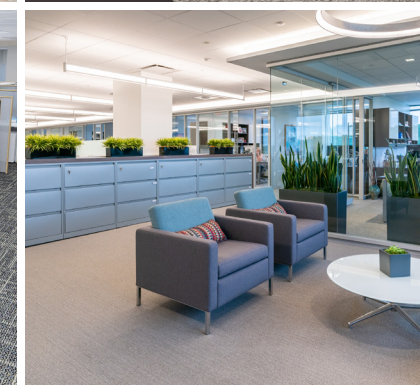
GREAT UPDATES AHEAD

- Modernized main lobby and concourse level
- Modernized elevator cabs
- New relaxing tenant lounge with Wi-Fi
- Upgraded 30-person conference room
- New outdoor patio with seating and Wi-Fi



EASY TO LOVE

- Over 29,000 square feet of floor space
- Large or small, modern, airy suites available
- Perfect for any type of business
- Free structured parking
- Magnificent granite and glass Class A building
- Fully-equipped fitness center with showers and lockers



EASY TO ACCESS

- Convenient location on Reston Parkway
- Adjacent to Halley Rise, soon to be the area's finest mixed-use hub
- Uncongested accessibility
- Close to the Dulles Toll Road
- A 10-minute walk from the new Reston Town Center Metro station
- Capital Bikeshare lot right outside the building
- Free electric property scooters for tenants



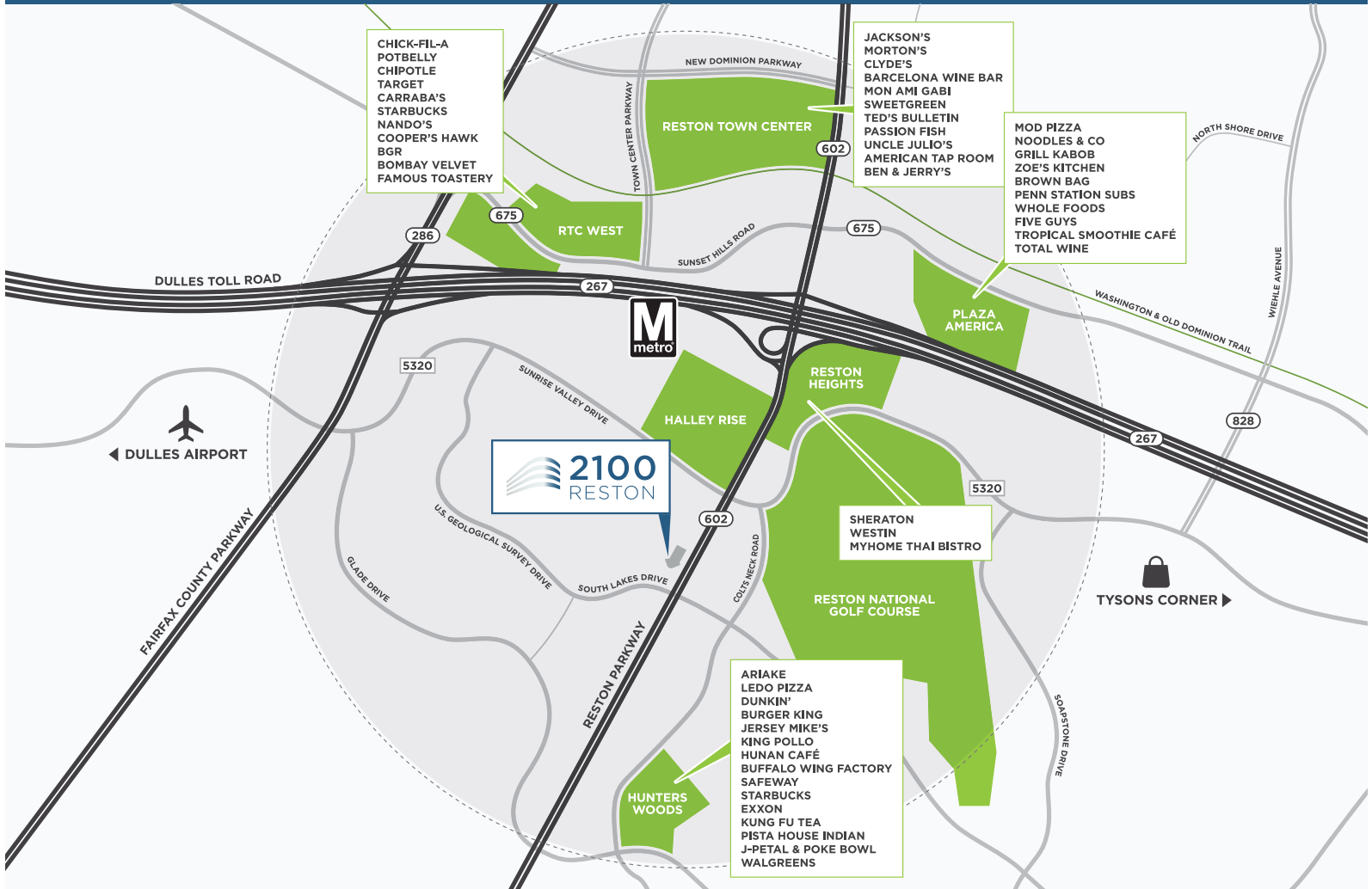
Come experience the newly renovated 2100 Reston.

Accessible, convenient, and packed with top notch facilities. An excellent opportunity for your future office space.

Scan to view floor plans, test fits, and other leasing information online.



OVER 100 RESTAURANTS & SHOPS WITHIN A MILE



OWNED & MANAGED BY



4350 East-West Highway
Suite 500
Bethesda, MD 20814
301.565.5100

For more info or to schedule a tour (virtually or in-person), call 703.376.8619.