



Property Summary

Building SF:	2,980
Lot Size:	1.61 Acres
Price:	\$650,000

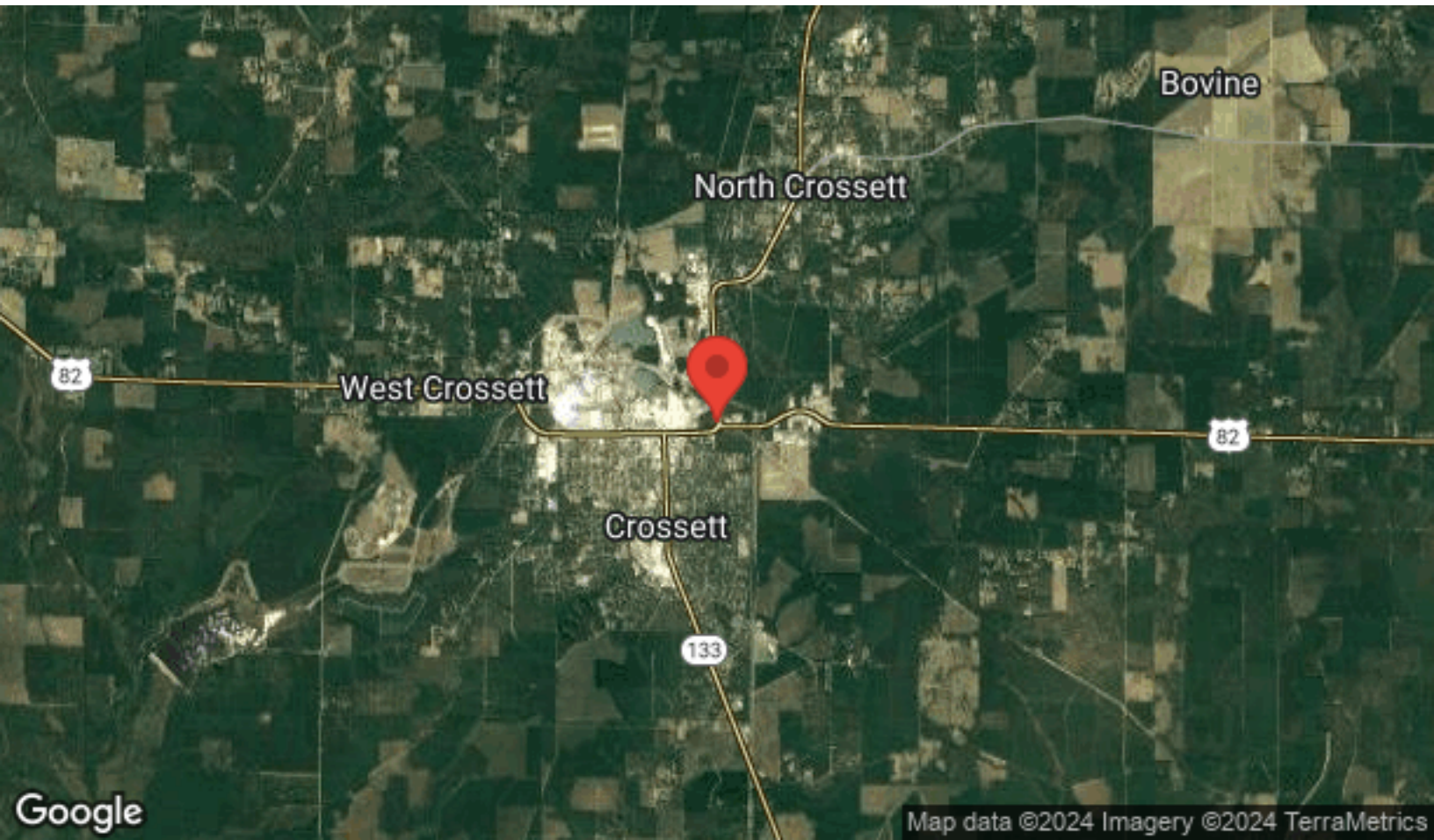
Property Overview

Prime opportunity awaits at this approximately 2,980 square foot convenience store, formerly known as Road Mart, in Crossett, AR. Positioned at the high-visibility intersection of Fairview Road and Unity Road, this property stands out at the curve, ensuring maximum exposure. Surrounded by major retailers including Walmart Supercenter, O'Reilly Auto Parts, and McDonald's, this location offers exceptional convenience and potential for success. Don't miss your chance to capitalize on this excellent location!

Location Overview

Located at the intersection of Fairview Road and Unity Road.







Buick at HOLT AUTO GROUP, LP

Murphy USA

Subway

O'Reilly Auto Parts

Ivan Smith Furniture

Unity Rd

W-1st Ave

E-1st Ave

McDonald's

Taco Bell

Sonic Drive-In

KFC

Walmart Supercenter

Aaron's Rent To Own

Crossett