



PROFESSIONAL OFFICE SPACE

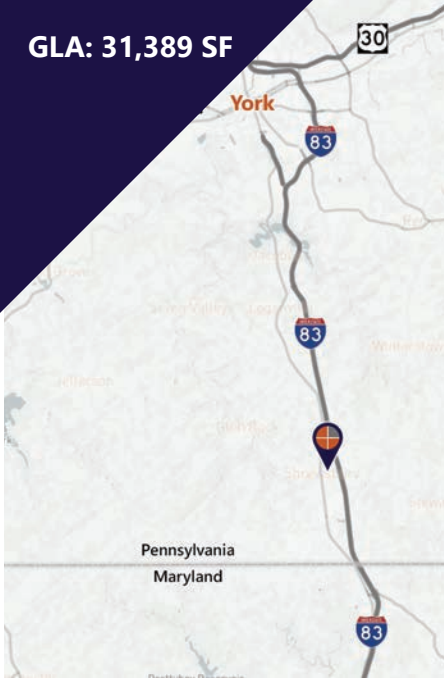
Shrewsbury Borough | York County

73 E. Forrest Ave. Shrewsbury, PA 17361

FOR LEASE

Professional Office Space
Available inside the
Shrewsbury
Professional Building

GLA: 31,389 SF



Marisa Benjamin
Cell: 717.615.1665
marisa@truecommercial.com

David Albright
Cell: 717.870.3097
david@truecommercial.com

For More Information Call: 717.850.TRUE (8783) | 1018 N. Christian St. Lancaster, PA 17602 | www.TRUECommercial.com

The information has been secured from sources we believe to be reliable. TRUE Commercial Real Estate LLC makes no representations or warranties, express or implied, as to the accuracy of the information. References to square footage or age are approximate. Buyer must verify the information and bears all risk for any inaccuracies.



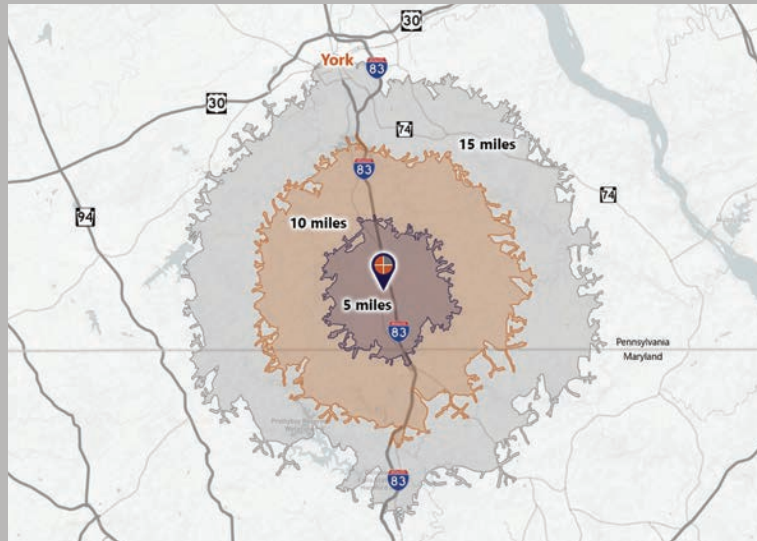
PROFESSIONAL OFFICE SPACE

DEMOGRAPHICS

Point	Distance (miles)	Travel Time (minutes)
Interstate-83	0.70 miles	3.00 min.
Interstate 83/Route 30 Split (York)	18.1 miles	19.00 min.
Interstate 695 (Maryland)	27.8 miles	30.00 min.
PA Turnpike - Harrisburg West Interchange	36.1 miles	35.00 min.
Interstate-83 / Interstate-81 Split	47.5 miles	52.00 min.
Baltimore/Washington Int'l Airport	50.4 miles	58.00 min.

73 E. Forrest Ave. Shrewsbury			
Demographics	5 miles	10 miles	15 miles
Total Population	20,629	48,365	173,368
Total Daytime Population	19,481	37,796	151,366
Total Households	8,309	18,605	66,451
Per Capita Income	\$47,456	\$49,010	\$42,233
Average Household Income	\$120,076	\$127,219	\$109,732
Average Disposable Income	\$90,413	\$94,269	\$82,009
Total (SIC01-99) Businesses	778	1,351	5,002
Total (SIC01-99) Employees	7,788	12,583	60,266

Travel Distance from Site



PROPERTY & MARKET OVERVIEW

Conveniently located minutes from the Interstate-83 Shrewsbury exit, which offers quick travel times to York and Harrisburg Markets. The Shrewsbury Professional Building is the premiere office building in the market, hosting a wide variety of professional businesses including WellSpan Health, Shrewsbury Family Dentistry, True North Wellness, State Farm Insurance, and many others. The property is situated in close proximity to numerous amenities such as banks, restaurants, shopping and civic services.

The building offers over 31,000 SF of space over three floors with numerous common area features & amenities, making occupancy both easy and affordable. Flexible lease terms available.

Shrewsbury is a rapidly growing and expanding market which is scheduled to receive improvements to the Interstate-83 highway and has welcomed several new businesses, including a new production facility for publicly traded Johnson Controls.

Within 3 miles there are currently two new housing developments by Keystone Custom Homes, with values starting at \$530,000. There are 79 new home sites in Hamilton Overlook Community and 36 new home sites in Country Club Overlook Community.

PROPERTY DETAILS

- Total Building Size:.....31,389 SF
- Lease Rate:..... Upon Request
- Lease Terms: Flexible / Negotiable
- Access:Direct Access to Traffic Signal
- Parking:..... Front & Rear Parking Lots
- Signage: Pylon Space Available
- Co-Tenancy:..... Mixed Professional Services

Spaces Available:

- Unit 110: 2,146 SF
- Unit 150: 2,293 SF
- Unit 170: 744 SF
- Unit 205: 2,099 SF
- Unit 215: 2,781 SF
- Unit 360: 536 SF
- Unit 390: 1,802 SF

TRAFFIC COUNTS

- East Forrest Ave.: 10,569 VPD
- Interstate-83:..... 35,695 VPD

For More Information Call: 717.850.TRUE (8783) | www.TRUECommercial.com

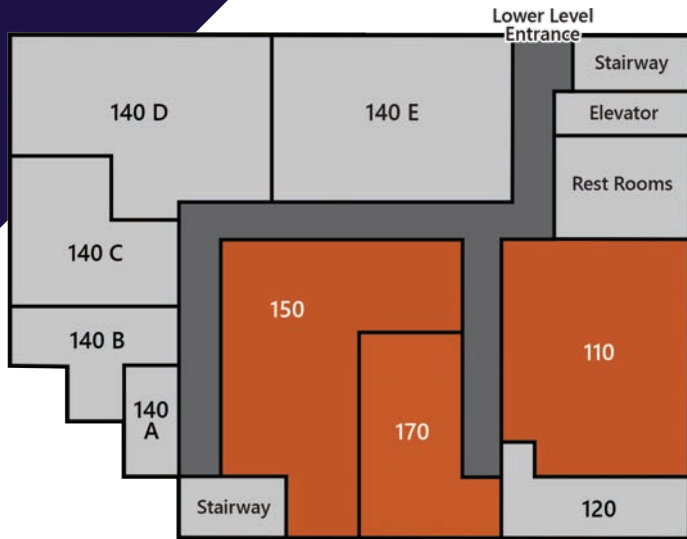
ESTABLISHED REGIONAL AREA MAP



For More Information Call: 717.850.TRUE (8783) | www.TRUECommercial.com

The information has been secured from sources we believe to be reliable. TRUE Commercial Real Estate LLC makes no representations or warranties, express or implied, as to the accuracy of the information. References to square footage or age are approximate. Buyer must verify the information and bears all risk for any inaccuracies.

BUILDING SITE PLAN & AVAILABILITIES



First Floor

Lower Level - Parking Lot



Second Floor

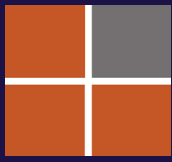
Main Entrance - Street Level



Third Floor

Tenants & Availabilities					
Unit	Tenant	Sq. Ft.	Unit	Tenant	Sq. Ft.
110	AVAILABLE	2,146	210	Wellspan Rehabilitation	3,400
120	MultiCam East	740	215	AVAILABLE	2,781
140 A	Very Effective Space LLC	224	300	King & Assoc. Physical Therapy	1,557
140 B	Very Effective Space LLC	445	310	State Farm Insurance	1,424
140 C	Shark Cigar LLC	794	330	LEASED	992
140 D	MultiCam East	1,267	340	True North Wellness Services	2,453
140 E	South Central Chiropractic	1,442	350	Senior Financial Solutions Group	864
150	AVAILABLE	2,293	360	AVAILABLE	536
170	AVAILABLE	744	380	Palmetto Services	411
200	Shrewsbury Family Dentistry	2,112	390	AVAILABLE	1,802
205	AVAILABLE	2,099			

For More Information Call: 717.850.TRUE (8783) | www.TRUECommercial.com

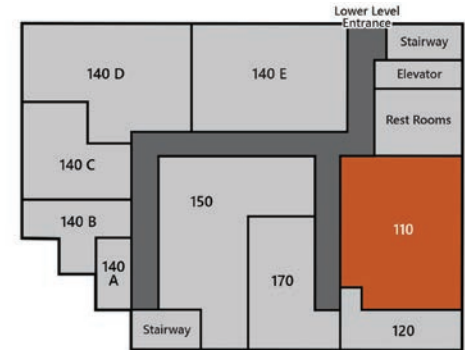


SUITE 110 | SPACE OVERVIEW & PHOTOS

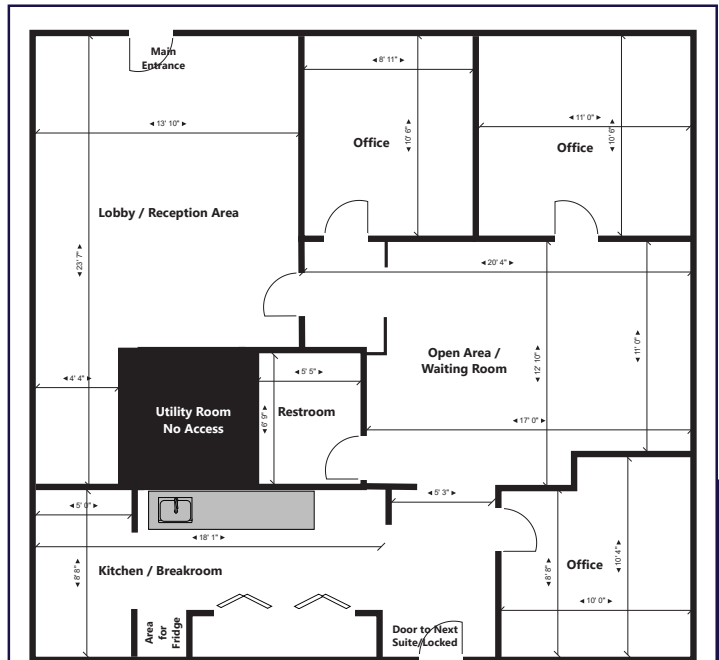
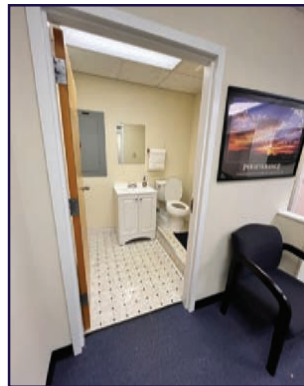
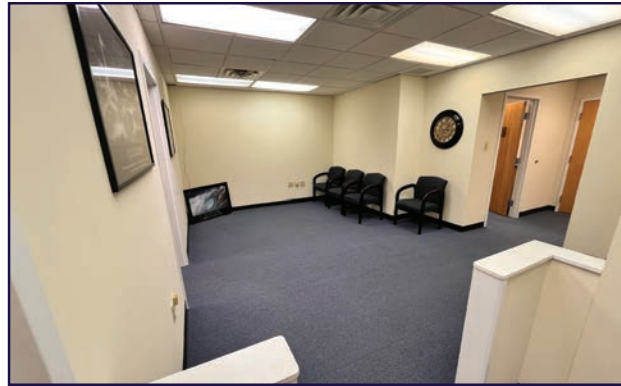


SPACE OVERVIEW

- 2,146 SF
- Large Reception / Waiting Room
- Open Bullpen
- 3 Private Offices
- Kitchenette / Breakroom



First Floor
Lower Level - Parking Lot

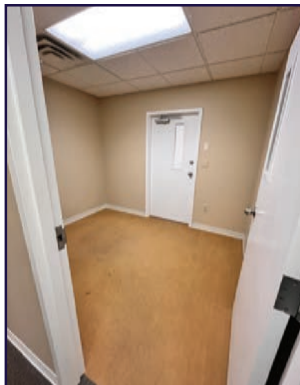
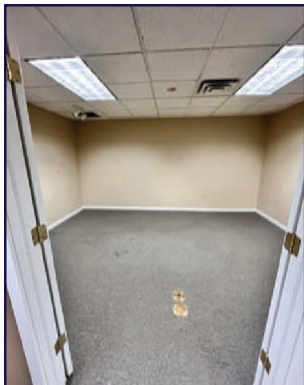
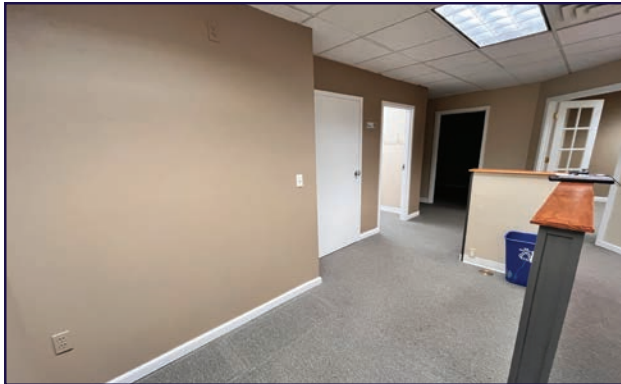


Measurements are approximate and not architectural measurements. Tenants must verify all measurements and square footage.

For More Information Call: 717.850.TRUE (8783) | www.TRUECommercial.com

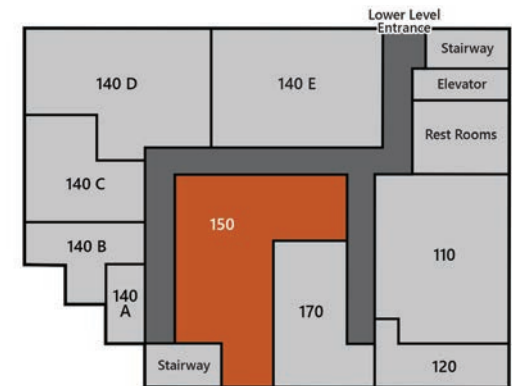


SUITE 150 | SPACE OVERVIEW & PHOTOS



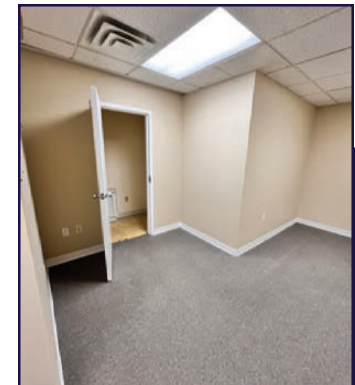
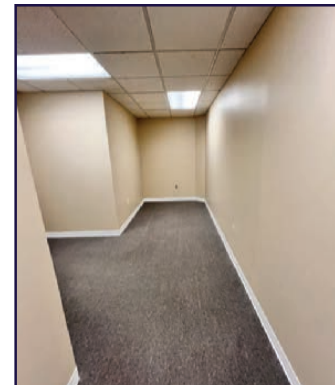
SPACE OVERVIEW

- 2,293 SF
- Large Reception Area / Waiting Room
- 2 Conference Rooms
- Bullpen Area
- 3 to 4 Private Offices
- Kitchenette with Sink



First Floor

Lower Level - Parking Lot



For More Information Call: 717.850.TRUE (8783) | www.TRUECommercial.com

The information has been secured from sources we believe to be reliable. TRUE Commercial Real Estate LLC makes no representations or warranties, express or implied, as to the accuracy of the information. References to square footage or age are approximate. Buyer must verify the information and bears all risk for any inaccuracies.

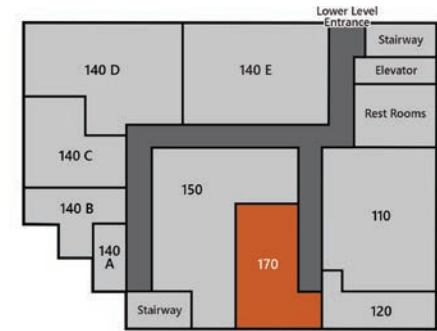


SUITE 170 | SPACE OVERVIEW & PHOTOS

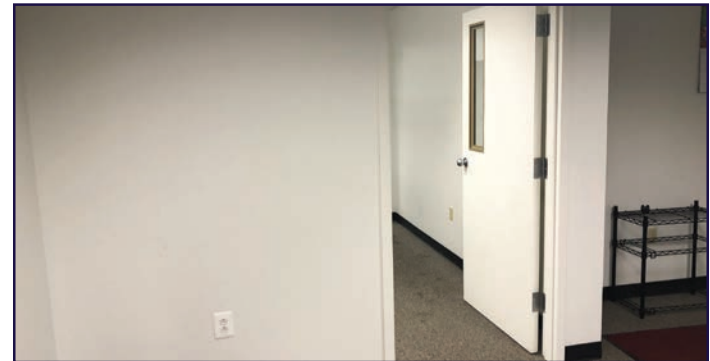


SPACE OVERVIEW

- 744 SF
- Reception Area / Waiting Room
- Two (2) Offices
- Podcast Room



First Floor
Lower Level - Parking Lot



For More Information Call: 717.850.TRUE (8783) | www.TRUECommercial.com

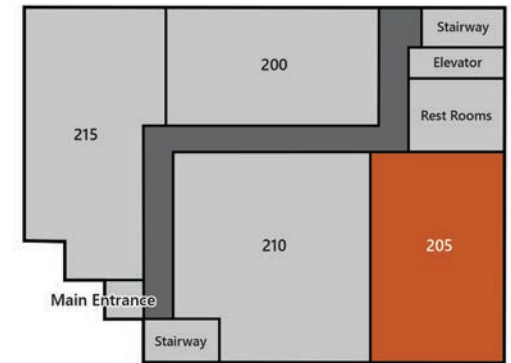


SUITE 205 | SPACE OVERVIEW & PHOTOS



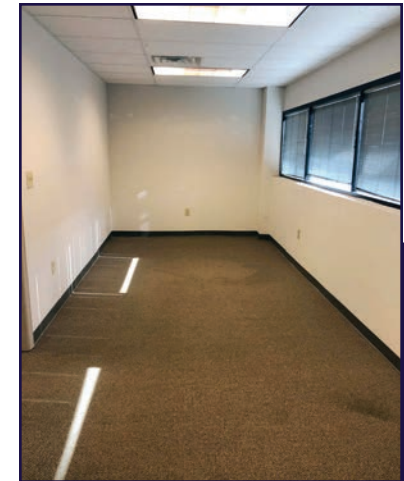
SPACE OVERVIEW

- 2,099 SF
- Reception Area
- Small Media/Meeting Room
- Two (2) Private Offices & Two (2) Open Office Areas
- Large Bullpen Open Area
- Kitchenette with Sink



Second Floor

Main Entrance - Street Level



For More Information Call: 717.850.TRUE (8783) | www.TRUECommercial.com

The information has been secured from sources we believe to be reliable. TRUE Commercial Real Estate LLC makes no representations or warranties, express or implied, as to the accuracy of the information. References to square footage or age are approximate. Buyer must verify the information and bears all risk for any inaccuracies.

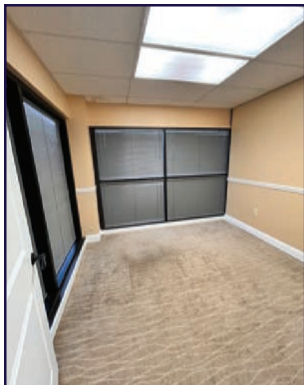


SUITE 215 | SPACE OVERVIEW & PHOTOS



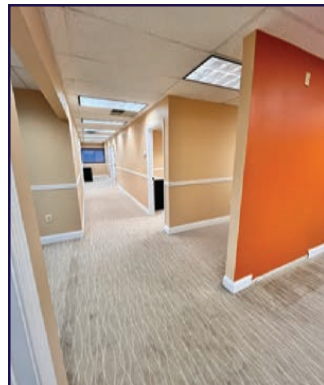
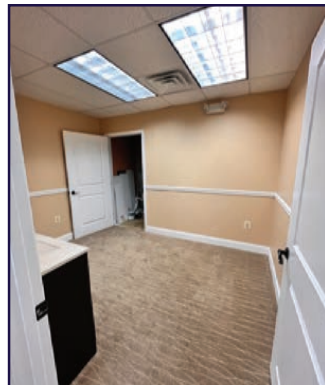
SPACE OVERVIEW

- 2,781 SF (formerly Premier Eye Center)
- Private Entrance off the Main Entry - Street Level
- Large Reception / Waiting Room
- 8 Private Offices / Rooms, some offer plumbing
- Doctor/Nurse Station



Second Floor

Main Entrance - Street Level



For More Information Call: 717.850.TRUE (8783) | www.TRUECommercial.com

The information has been secured from sources we believe to be reliable. TRUE Commercial Real Estate LLC makes no representations or warranties, express or implied, as to the accuracy of the information. References to square footage or age are approximate. Buyer must verify the information and bears all risk for any inaccuracies.

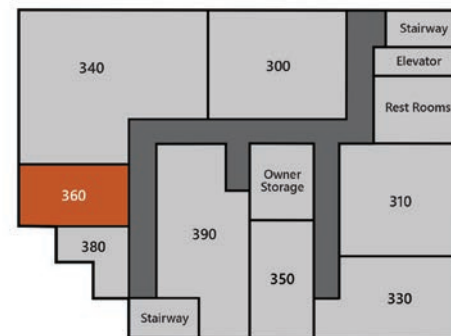


SUITE 360 | SPACE OVERVIEW & PHOTOS

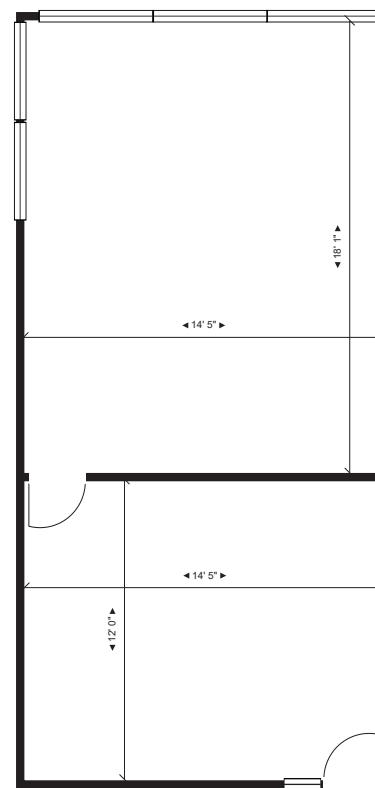


SPACE OVERVIEW

- 536 SF
- A Two Room Spacious Office with Lots of Natural Daylight



Third Floor



Measurements are approximate and not architectural measurements. Tenants must verify all measurements and square footage.



For More Information Call: 717.850.TRUE (8783) | www.TRUECommercial.com



SUITE 390 | SPACE OVERVIEW & PHOTOS



SPACE OVERVIEW

- 1,802 SF
- Large Reception / Bullpen Area
- One (1) Conference Room
- Three (3) Private Offices



Third Floor



For More Information Call: 717.850.TRUE (8783) | www.TRUECommercial.com



AERIAL DRONE PHOTOS



For More Information Call: 717.850.TRUE (8783) | www.TRUECommercial.com

The information has been secured from sources we believe to be reliable. TRUE Commercial Real Estate LLC makes no representations or warranties, express or implied, as to the accuracy of the information. References to square footage or age are approximate. Buyer must verify the information and bears all risk for any inaccuracies.