

OFFICE SPACE FOR LEASE

2181 NW FRONT AVENUE

PORTLAND, OR 97209



Image Source CoStar

Apex Real Estate Partners
415 NW 11th Ave, Portland, OR 97209
503.595.2840 / www.apexcre.com

Matt Cole, Managing Director
503.595.2836
Matt@apexcre.com



APEX
REAL ESTATE PARTNERS

HIGHLIGHTS



± 3,350 SF ground floor office space



Asking rate \$18.00/SF Modified Gross



Move-in ready build-out

- 2 open work areas
- 3 offices
- 2 conference rooms
- Spacious kitchenette and break room
- Welcoming main lobby and reception area with vaulted ceilings



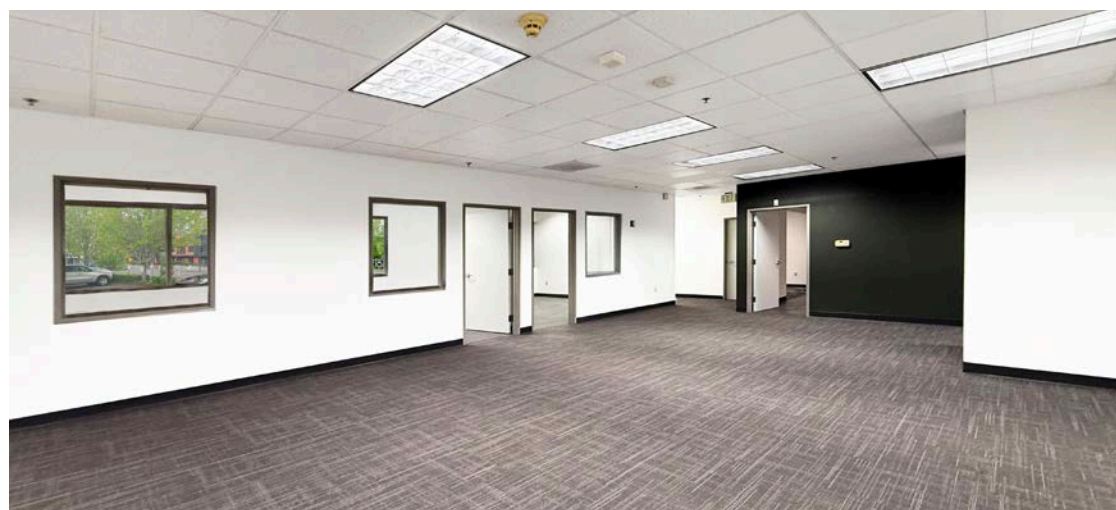
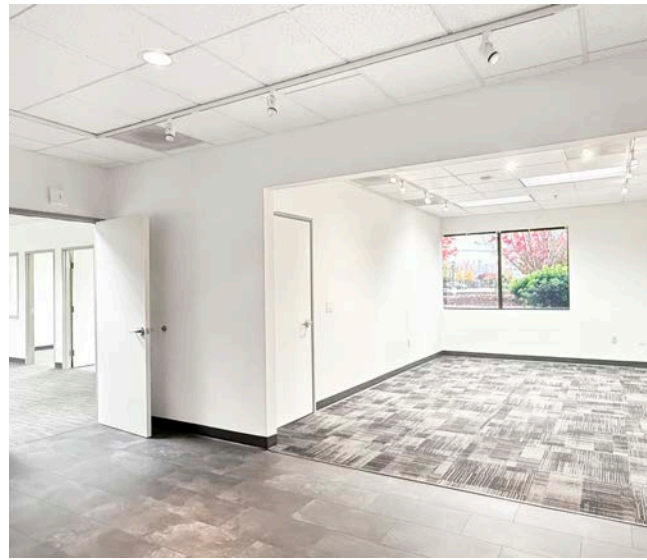
2 dedicated entrances for convenient access



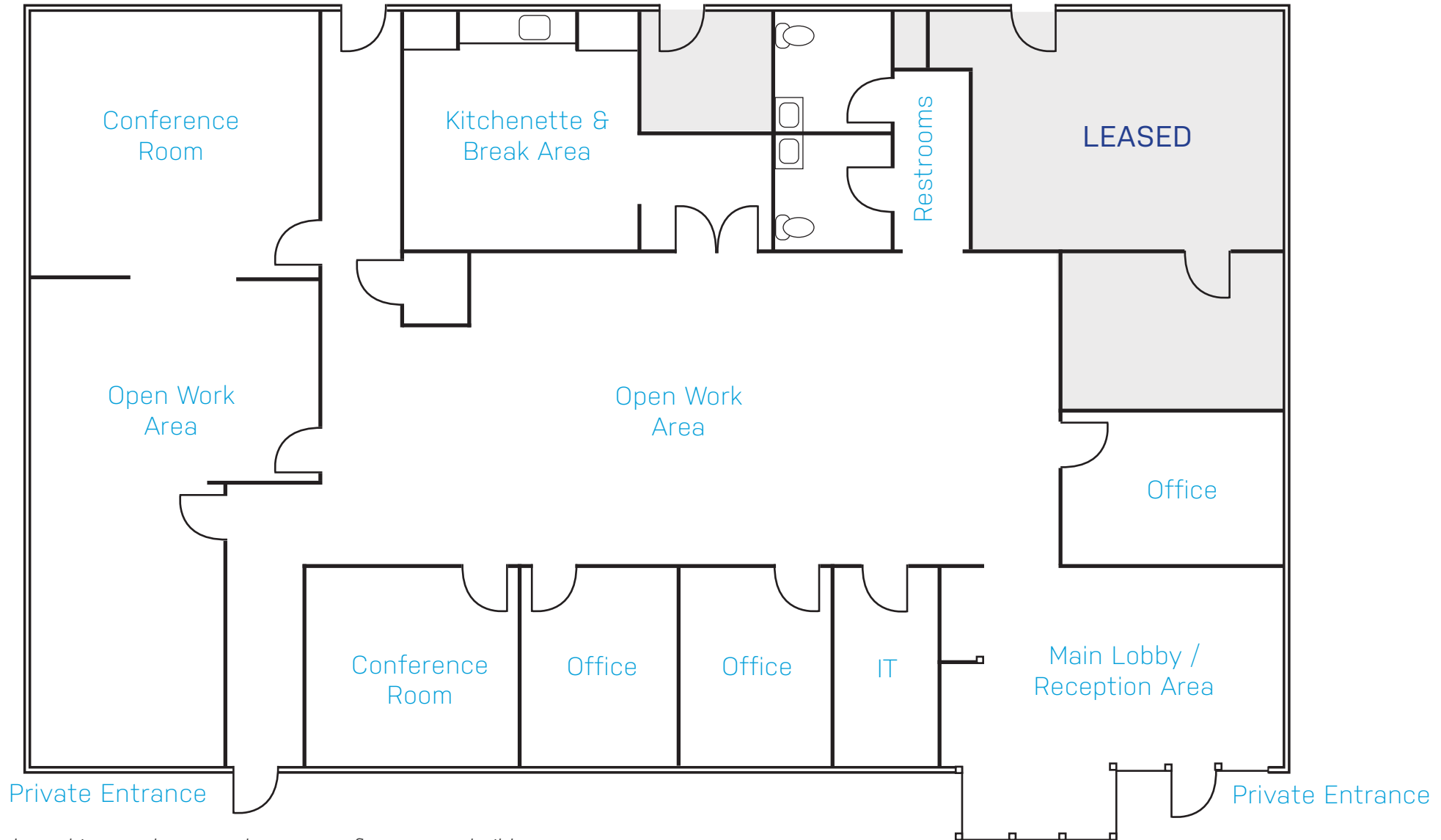
Free on-site surface parking



Exceptional North Pearl location with seamless connectivity and public transit just steps away



FLOOR PLAN



Floor plan subject to change and may not reflect current build-out



OLD TOWN

DOWNTOWN

STRATEGIC
LOCATION

PEARL DISTRICT

SLABTOWN

2181 NW FRONT AVE

NW INDUSTRIAL

NORTH PEARL

No warranty or representation, express or implied, is made as to the accuracy of the information contained herein, and same is submitted subject to errors, omissions, change of price, rental or other conditions, withdrawal without notice, and to any special listing condition imposed by our principals.