



For Sale

Updated Price!

TBD Kirkham Rd - Lowman
Property near Kirkham Hot Springs
Lowman, Idaho

John Starr
+1 208 871 0546
john.starr@colliers.com

Property Overview

Property Type	Land
Land Size	31.52 +/- Acres
Parcel #'s	RP09N08E327700 & RP09N08E335500
Location	South side of S Fork Payette River, just upstream from Kirkham Hot Springs
Access	Two gates, both locked, river road upstream of Kirkham Hot Springs

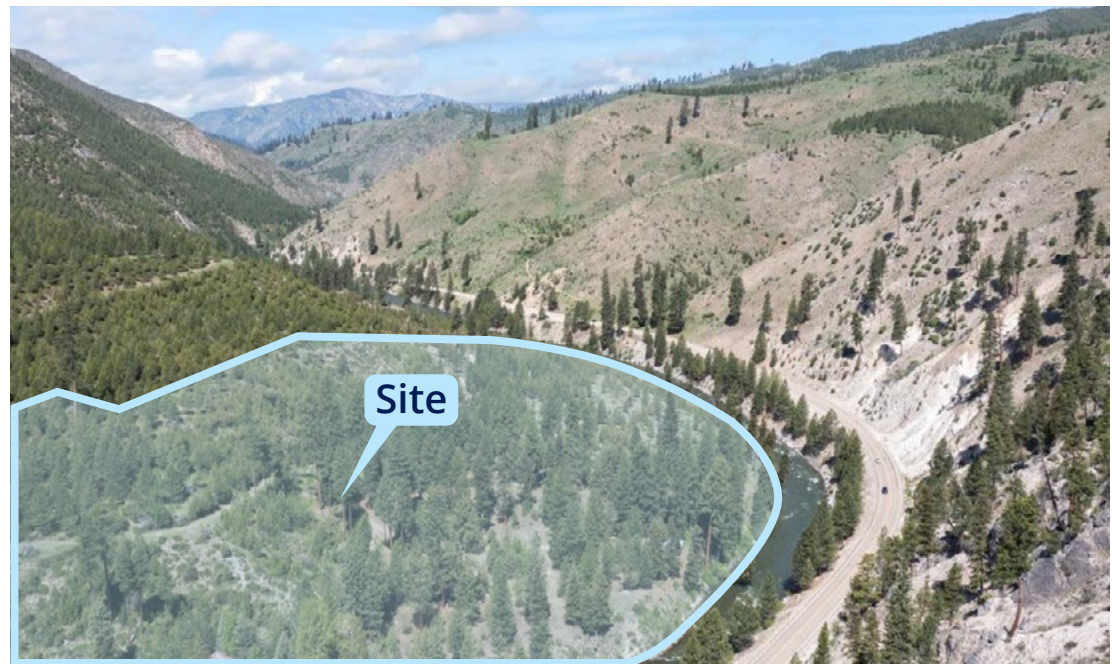
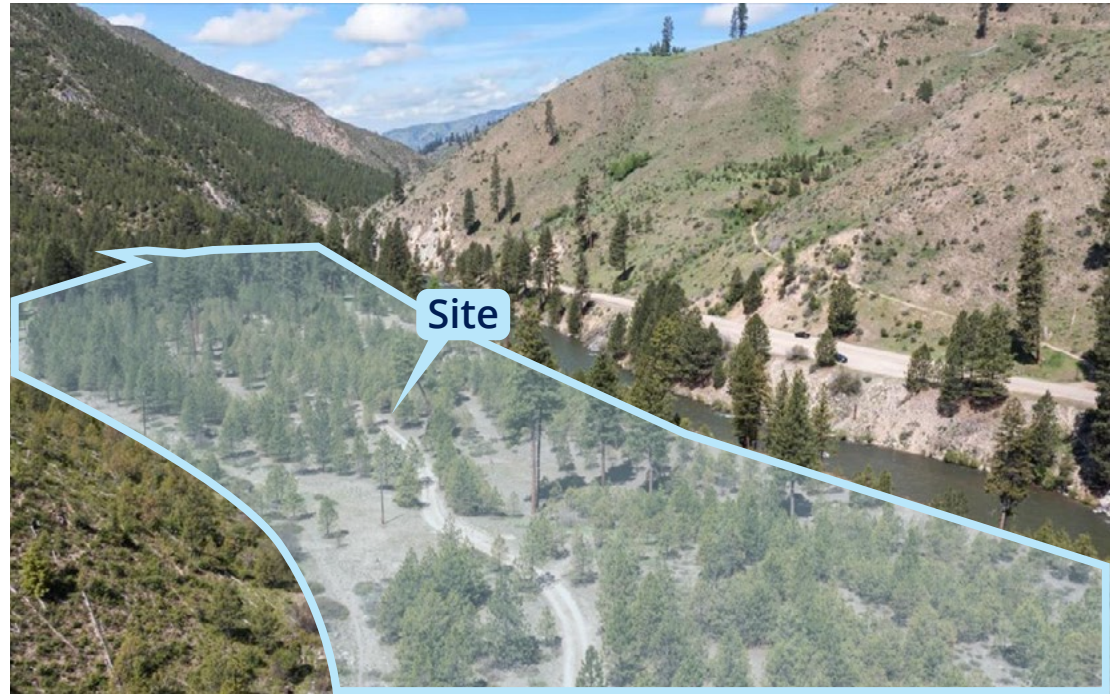
Price: **\$1,200,000**

Key Highlights

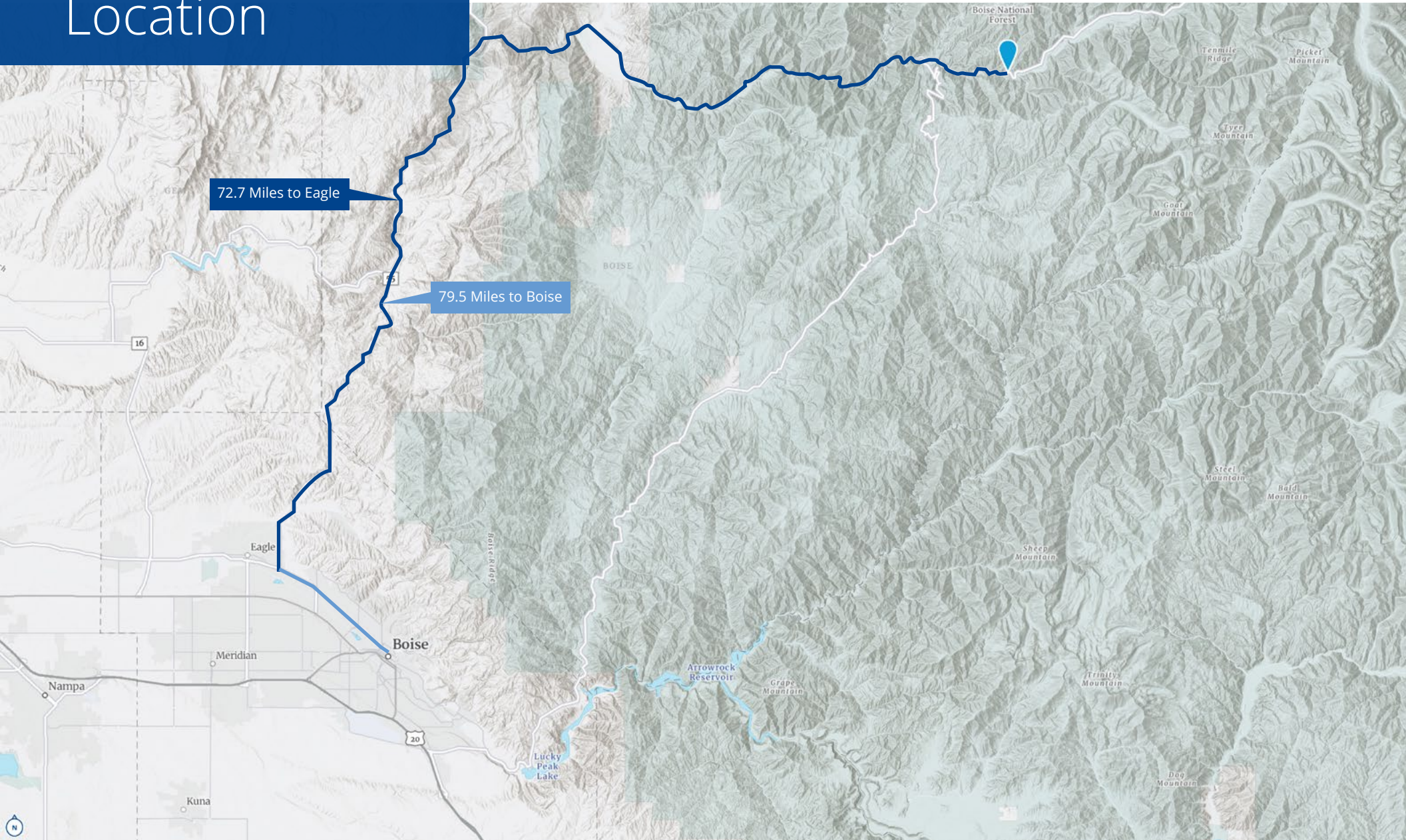
- An amazing river-front property in the Boise National Forest in Central Idaho
- Next door to Kirkham Hot Springs
- 7 Minutes/4.5 Miles upstream from Lowman, ID on Idaho State Highway 21. Less than 2 hours from Boise
- 2900' +/- of frontage on the SF of the Payette River, Kirkham, Boise County, Idaho
- Forested and open, flat and sloping, high river bank
- Power to site
- Two locked gates - Forest Service at Kirkham and private gate at property line
- Seller and Agent make no representations regarding building permit availability, nor developability



Property Photos



Location



1211 W. Myrtle St., Suite 200
Boise, Idaho 83702
+1 208 345 9000
colliers.com/idaho

This document has been prepared by Colliers for advertising and general information only. Colliers makes no guarantees, representations or warranties of any kind, expressed or implied, regarding the information including, but not limited to, warranties of content, accuracy and reliability. Any interested party should undertake their own inquiries as to the accuracy of the information. Colliers excludes unequivocally all inferred or implied terms, conditions and warranties arising out of this document and excludes all liability for loss and damages arising there from. This publication is the copyrighted property of Colliers and/or its licensor(s). © 2026. All rights reserved. This communication is not intended to cause or induce breach of an existing listing agreement. Colliers Treasure Valley, LLC.