

NEWLY LISTED OFFICE SPACE



OFFICE

910 Mill Ave. & 1400 S Elm St. | High Point, NC 27260



Square Footage

11,148 +/- SF Available



Listing Price

\$895,000

Listing Price

\$10 PSF NNN



Features

- Private Offices
- Ample Parking
- Historic District
- Built in 1967



Unique office property located in the Highland Cotton Mills Village Historic District. Set on 7.327+/- acres, this versatile space offers a mix of private offices and open areas, perfect for accommodating a variety of uses.

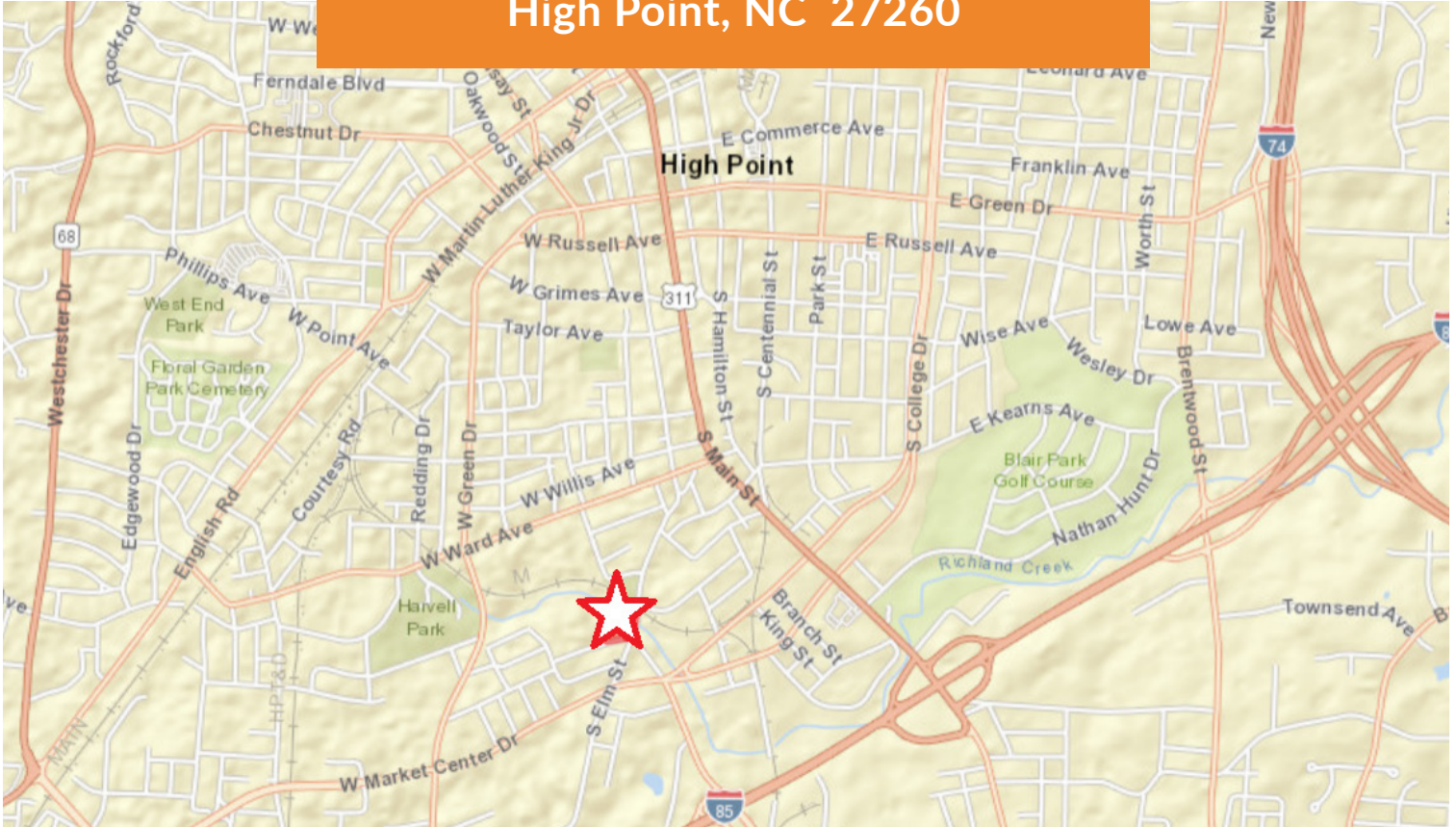


Agent

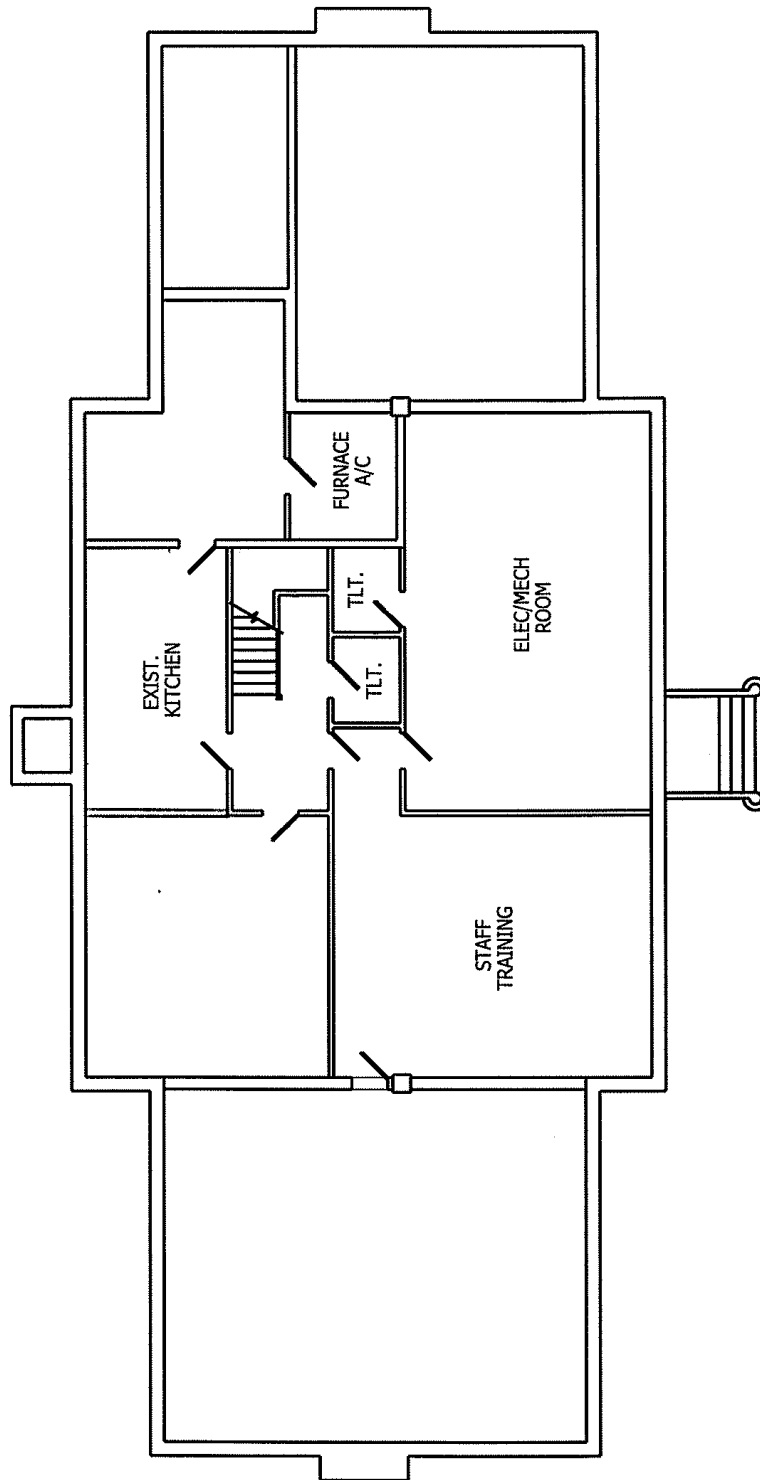
Marc DeLille, Partner
marc@delillefield.com
[336-471-3003](tel:336-471-3003)



**910 Mill Avenue & 1400 S Elm Street
High Point, NC 27260**



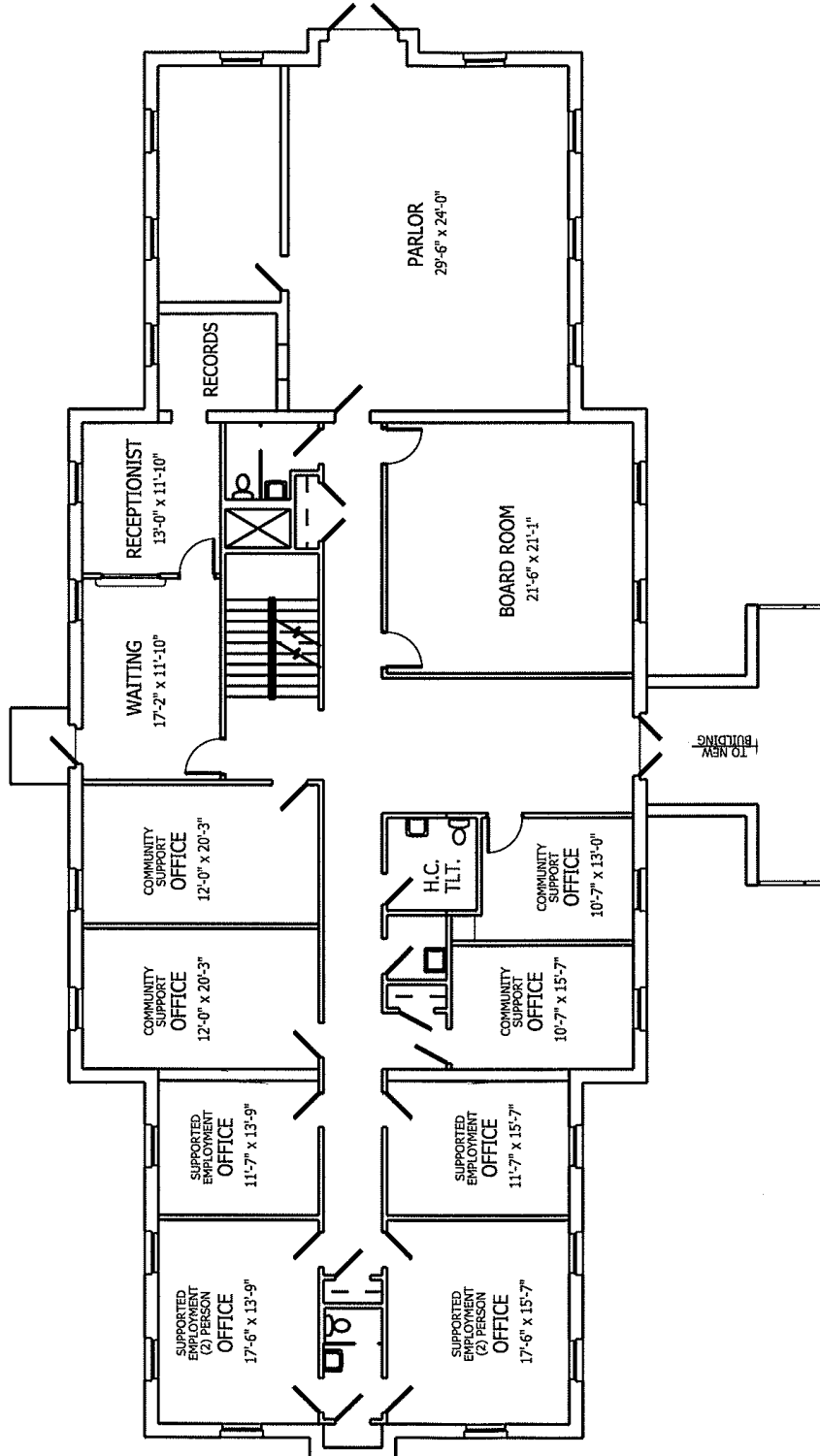
910 Mill Avenue & 1400 S Elm Street
High Point, NC 27260



BASEMENT FLOOR PLAN SCALE: N.T.S.

| | |
|---|----------------|
| ROBBINS ARCHITECTURE, P.A. | |
| GARY B. ROBBINS, AIA | |
| 2645 WILLIAMSBURY ROAD SUITE 122 HIGH POINT, NC 27265 | |
| TEL: 336-812-4725 FAX: 336-812-4723 | |
| JOB NO.: 0716 | DATE: 11/18/08 |
| MENTAL HEALTH ASSOCIATION | 1 |

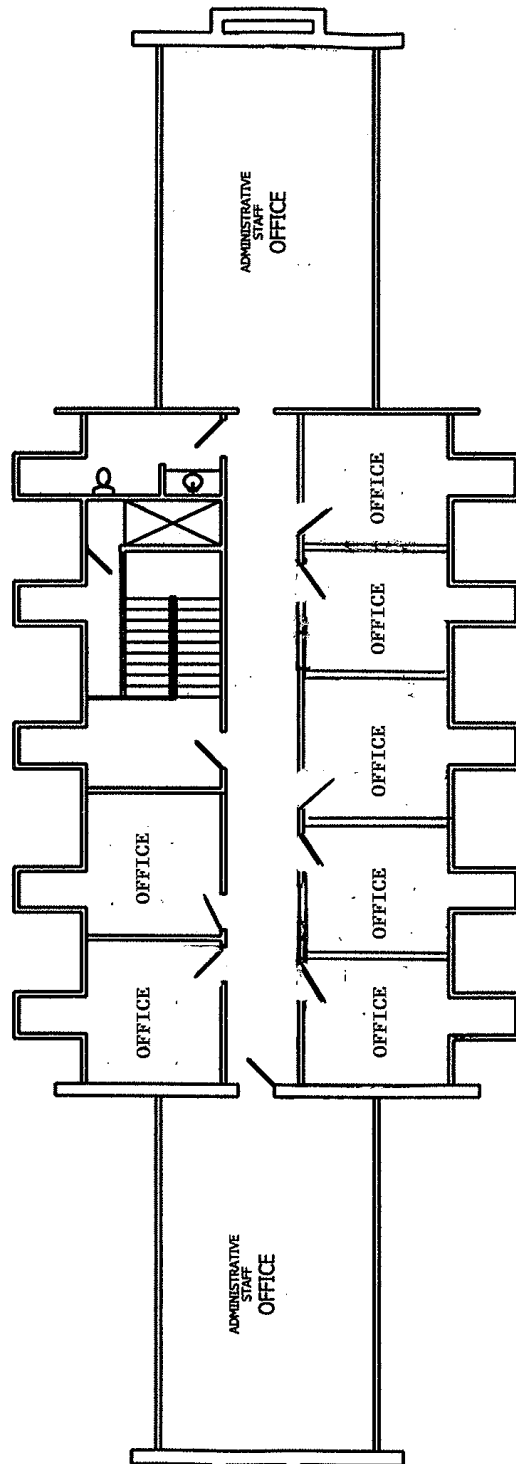
910 Mill Avenue & 1400 S Elm Street
High Point, NC 27260



| | |
|---|----------------|
| ROBBINS ARCHITECTURE, | |
| 6007 E. ROBBINS AVE. HIGH POINT, NC 27260 TEL: 336-812-3175 FAX: 336-812-3175 | |
| JOB NO.: 0716 | DATE: 11/18/08 |
| MENTAL HEALTH ASSOCIATION | 2 |

FIRST FLOOR PLAN SCALE: N.T.S.

910 Mill Avenue & 1400 S Elm Street
High Point, NC 27260



SECOND FLOOR PLAN SCALE: N.T.S.

| | |
|--|----------------|
| ROBBINS ARCHITECTURE | |
| GARY E. ROBBINS, AIA | |
| 1000 W. HARRIS STREET, SUITE 100, HIGH POINT, NC 27260 | |
| TEL: 336-812-3175 FAX: 336-812-3176 | |
| 200 MILL 0716 | DATE: 11/24/08 |
| MENTAL HEALTH ASSOCIATION | |
| 3 | |