



Parcel for Multifamily Development in Woodruff

Cannon Street

Woodruff, SC 29388

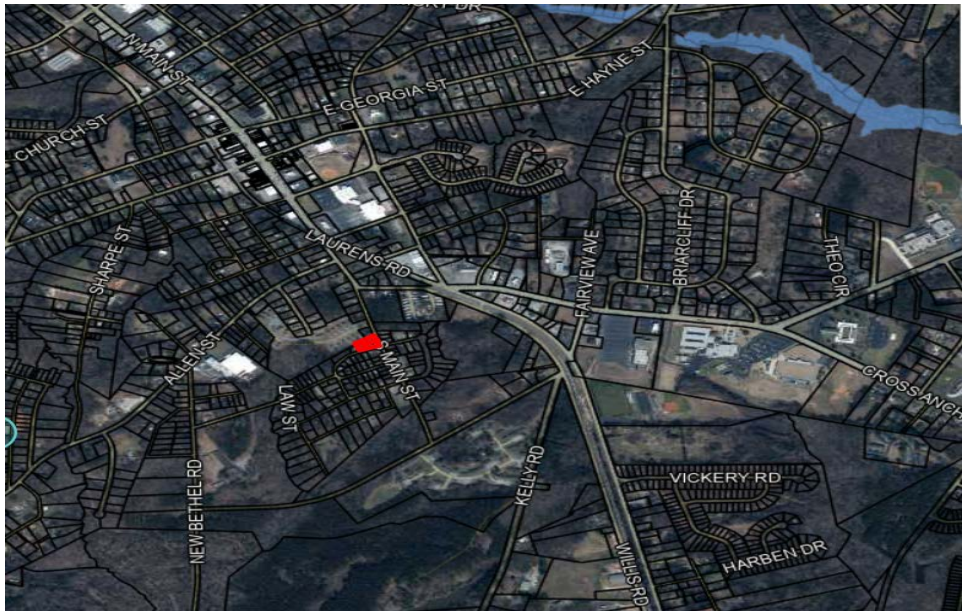
PRESENTED BY:

DOUGLAS PETERSON

O: 323.632.1979

Douglas@DivineGroup.us

PROPERTY SUMMARY



OFFERING SUMMARY

SALE PRICE:	\$110,000
LOT SIZE:	+/-0.4 Acre
PRICE / ACRE:	\$275,000
MARKET:	Greenville/Spartanburg
SUBMARKET:	Lower Spartanburg County
APN:	4-32-12-021.01 4-32-12-021.02 4-32-12-021.03

PROPERTY OVERVIEW

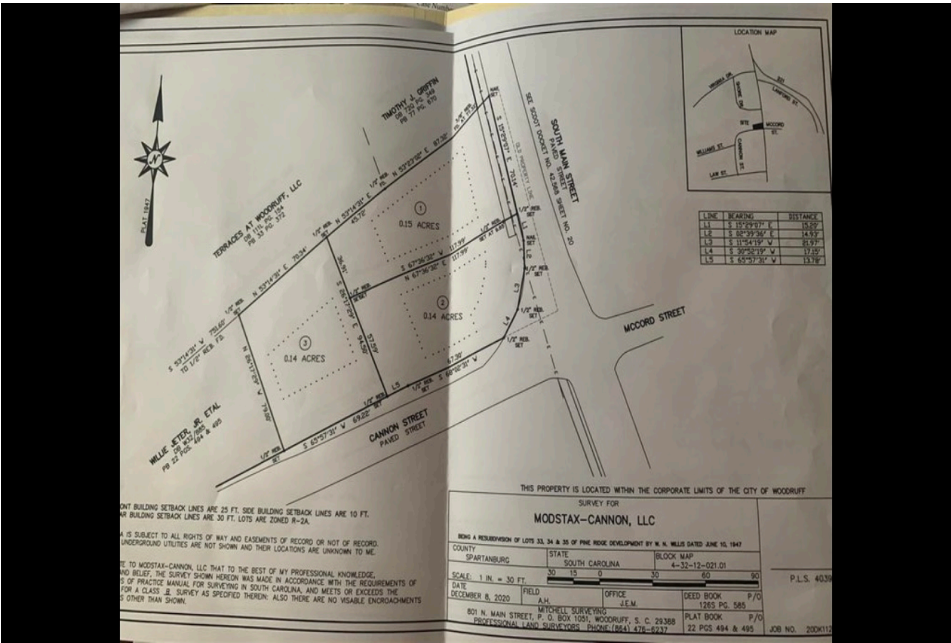
- * +/- 0.4 Acre for Multifamily Development in Woodruff
- * Zoned for a 6-Unit Duplex subdivision
- * The Woodruff area expects up to 8,000 new homes by the end of 2025
- * Only 1/4 mile from Downtown Woodruff
- * Water, Electric & Sewer are available

DOUGLAS PETERSON

O: 323.632.1979

Douglas.DivineGroup.us

ADDITIONAL PHOTOS



AERIAL VIEW

PROPERTY BOUNDARIES

DOUGLAS PETERSON
O: 323.632.1979
Douglas@DivineGroup.us

Cannon Street | Woodruff, SC 29388