

600 Northgate Parkway, Wheeling IL

± 2,473 - 6,577 SF FOR LEASE



SPECIFICATIONS

TOTAL BUILDING: 32,000 SF (Currently 6 Units)

AVAILABLE:

- Unit K: 6,577 SF (100% Air-Conditioned)
- Unit A: 2,473 SF
- Unit H: 2,177 SF

OFFICE: 600 - 2,300 SF

YEAR BUILT: 1991

LAND AREA: 2.04 Acres

LOADING:

- Unit K: 1 Drive-In Door
- Unit D: 1 Drive-In Door
- Unit B: 1 Drive-In Door

PARKING: 1.65/1,000 SF

CEILING HEIGHT: 14' Clear

POWER: 200 Amp, 3 Phase, 208V

SPRINKLER: Yes

LIGHTING: LED

PRICE: \$11.25 Modified Gross

- Clean and Functional Space
- Immediate Availability
- 3.5 miles to a full interchange at I-294, 8.7 miles to O'Hare International Airport, and 16 miles to Downtown Chicago
- 16 Miles outside of downtown Chicago

Contact:

Brian Bocci, SIOR
847-310-4296
bbocci@entreccommercial.com

Kevin Kaplan, CCIM
309-261-0920
kkaplan@entreccommercial.com

Owned & Managed By:



www.entreccommercial.com

3550 Salt Creek Lane, Suite 104, Arlington Heights, IL. 60005

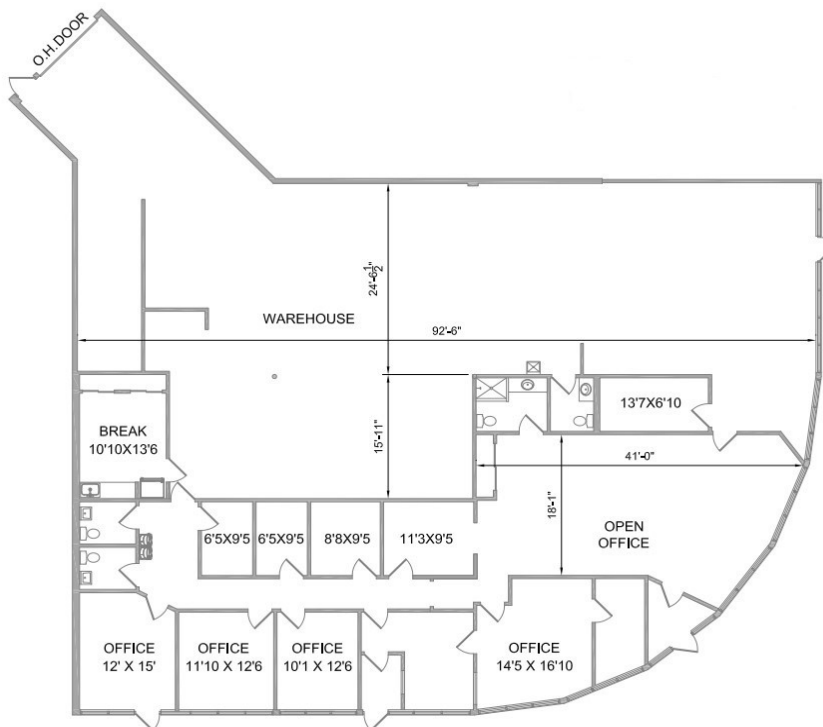
ENTRE
Commercial Realty LLC

600 Northgate Parkway, Wheeling IL

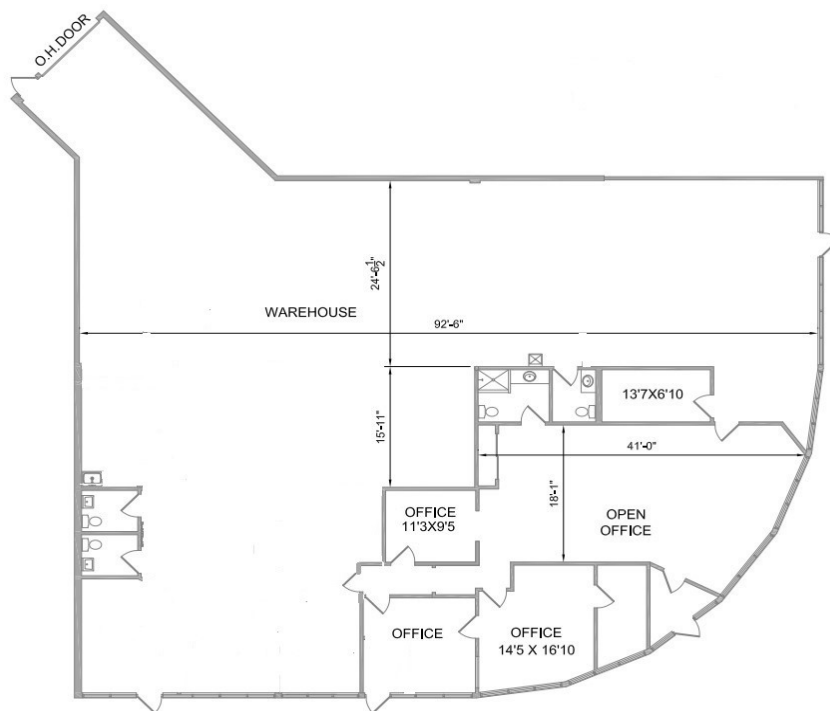
± 2,473 - 6,577 SF FOR LEASE

UNIT K: 6,577 SF

Current Layout



Potential Layout



www.entrecommercial.com

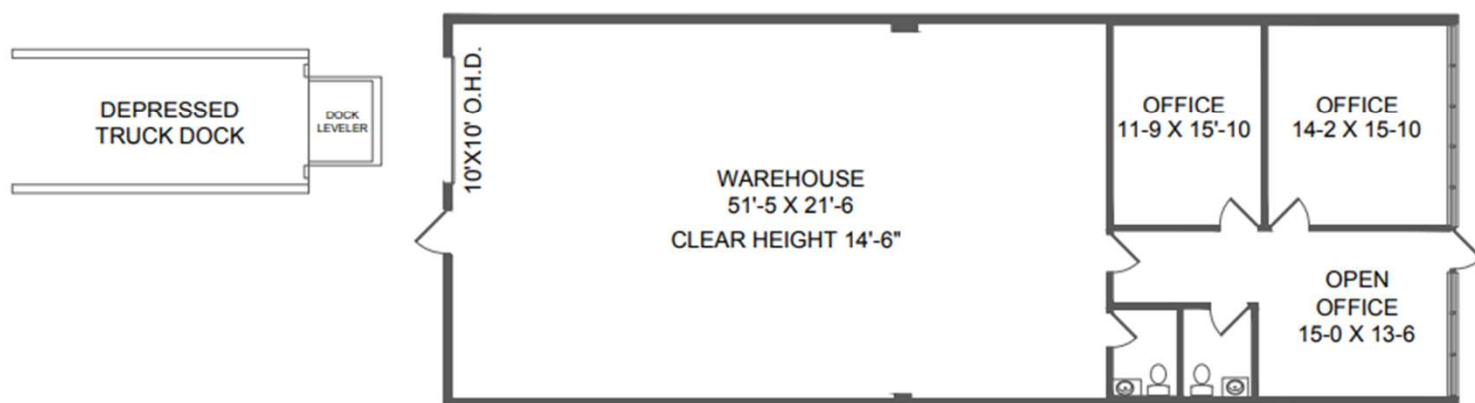
3550 Salt Creek Lane, Suite 104, Arlington Heights, IL. 60005



600 Northgate Parkway, Wheeling IL

± 2,473 - 6,577 SF FOR LEASE

UNIT A: 2,473 SF



600 Northgate Parkway, Wheeling IL

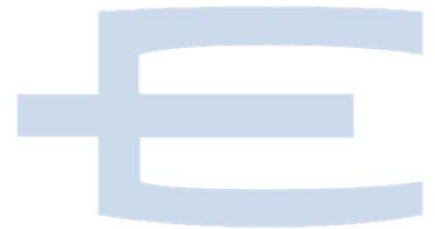
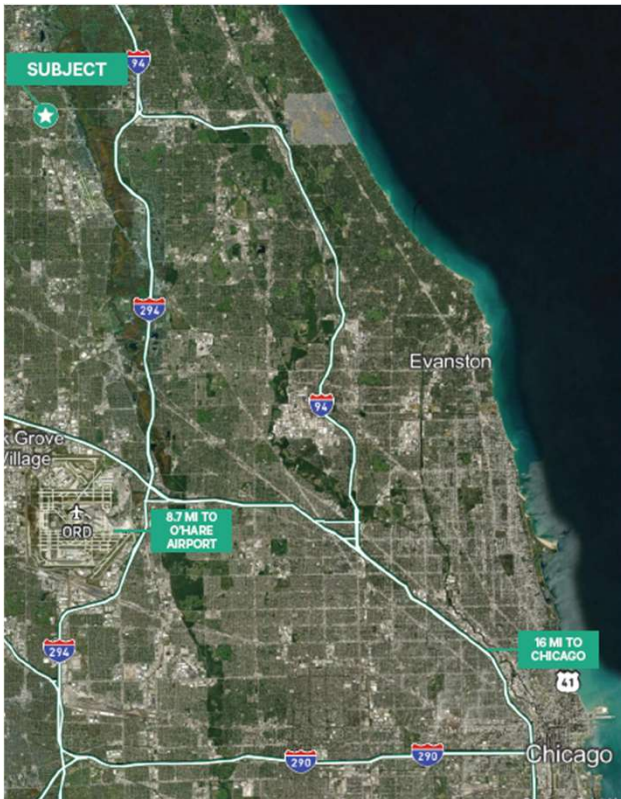
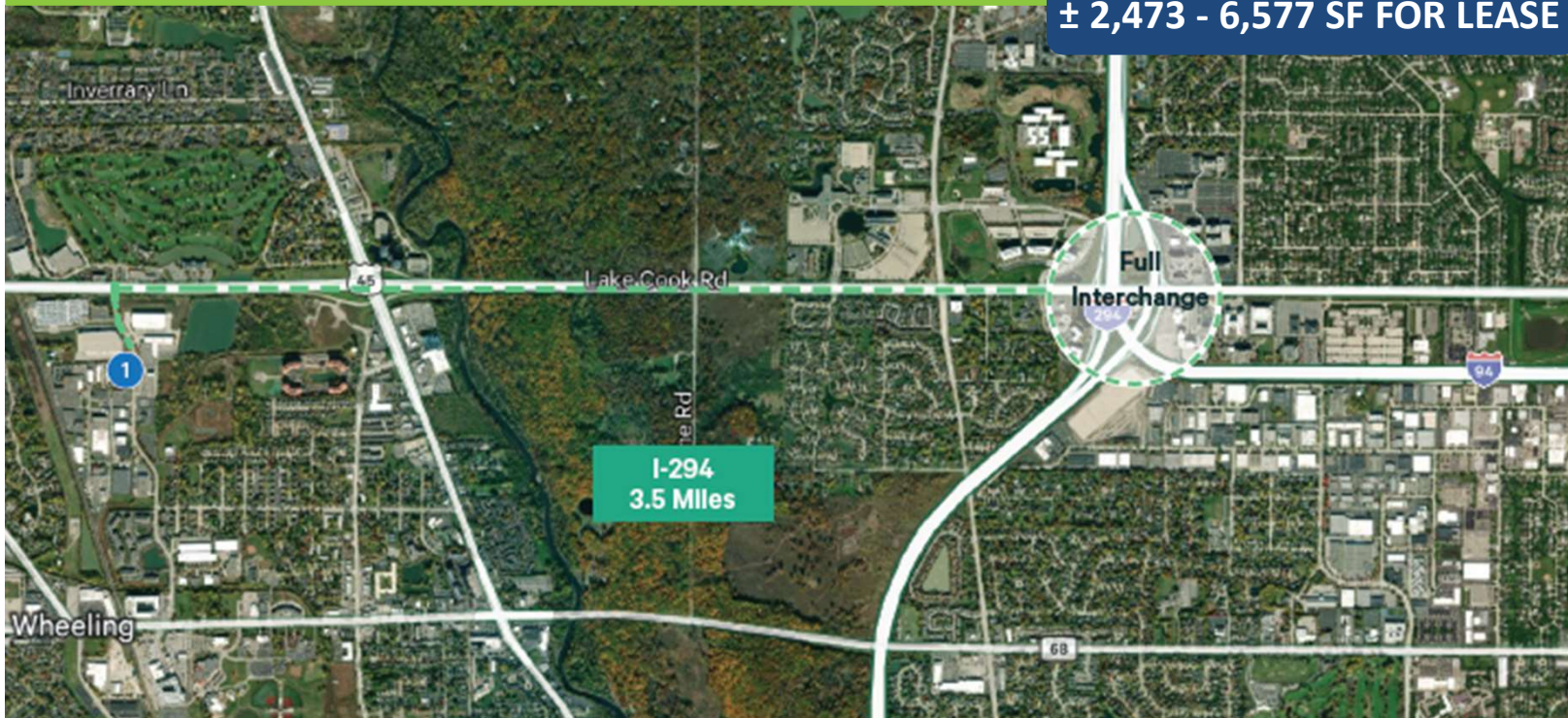
± 2,707 - 6,577 SF FOR LEASE

UNIT B: 2,707 SF



600 Northgate Parkway, Wheeling IL

± 2,473 - 6,577 SF FOR LEASE



Contact:

Brian Bocci, SIOR
 847-310-4296
 bbocci@entrecmercial.com

Kevin Kaplan, CCIM
 309-261-0920
 kkaplan@entrecmercial.com

Owned and managed by:



www.entrecmercial.com

3550 Salt Creek Lane, Suite 104, Arlington Heights, IL. 60005

