

FOR SALE

17065 HESS STREET



17065 HESS STREET MELVINDALE, MI

PROPERTY HIGHLIGHTS:

- 170,000 SF Industrial Building
- 16 acres with Industrial/Outdoor storage zoning
- Full-service truck repair facility
- Updated power, 28' ceilings, rail, truck doors
- 3 miles to Gordy Howe Bridge. One quarter mile to I-75. 1.6 miles to I-94.
- 16" floors
- 6 cranes up to 40 tons

The information provided herein along with any attachment(s) was obtained from sources believed to be reliable, however, Friedman Real Estate makes no guarantees, warranties, or representations as to the completeness or accuracy of such information and legal counsel is advised. All information provided is subject to verification and no liability for reliance on such information or errors or omissions is assumed. The presentation of this property is submitted subject to errors, omissions, change of price or conditions, prior sale or lease, or withdrawal without notice. Copyright © 2025 Friedman Real Estate. All rights reserved.

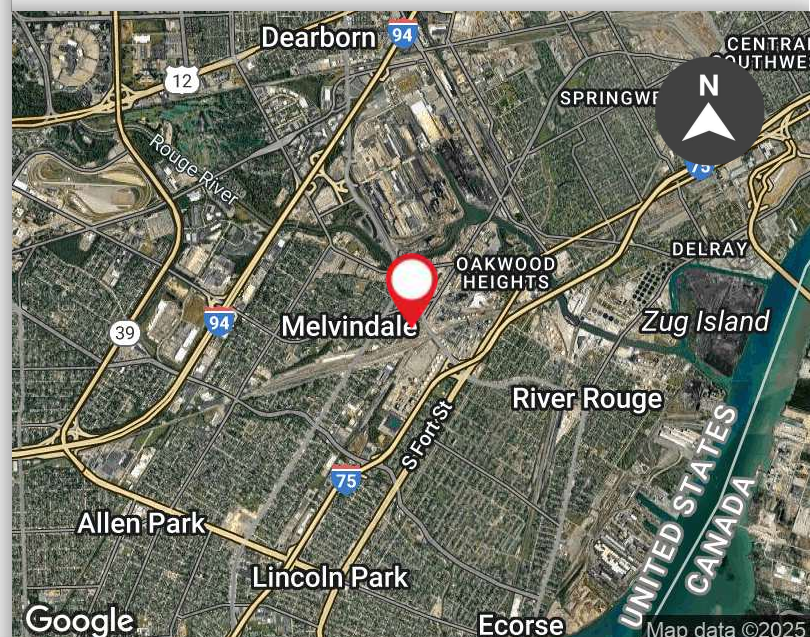
FOR MORE INFORMATION PLEASE CONTACT:



BRUCE A. MORRISON
bruce.morrison@freg.com

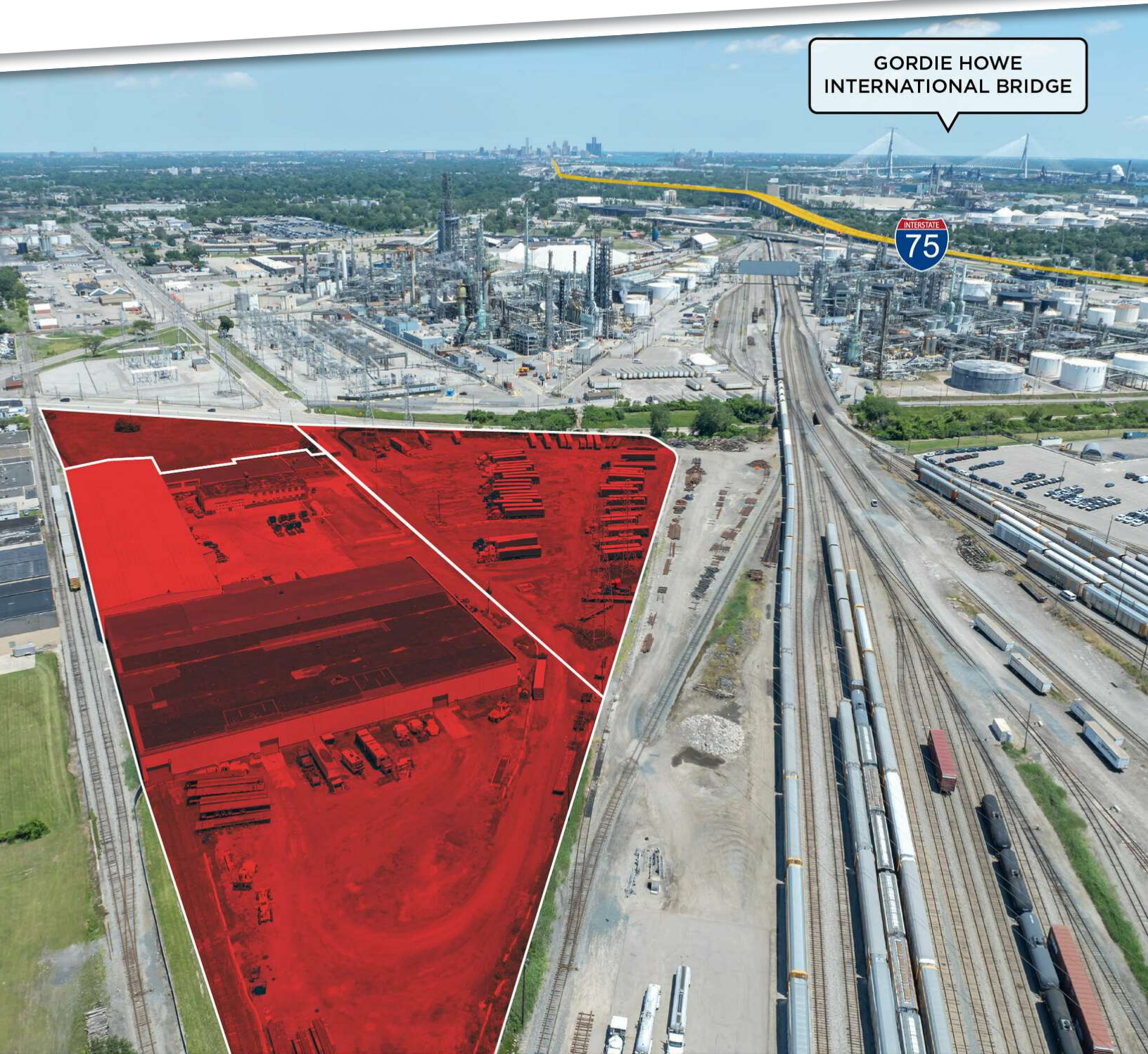
586.243.4260

eCODE 181



17065 HESS STREET
PROPERTY **PHOTOS**

GORDIE HOWE
INTERNATIONAL BRIDGE



17065 HESS STREET
PROPERTY PHOTOS



17065 HESS STREET
PROPERTY PHOTOS

