

**Asking Price:**

\$1.20

PSF NNN

CONTACT US**Tami Walker**

208 420 4601

tami.walker@colliers.com

Jerrika Gonzalez

208 344 6516

jerrika.gonzalez@colliers.com

205 Shoshone Street N, Suite 201

Twin Falls, Idaho 83301

208 910 2006

colliers.com/idaho

FOR LEASE

414 Shoup Ave W. #B

Twin Falls, Idaho

Highlights

- Within minutes of the hospital
- Easy access for patients or clients
- Ample Parking
- Some suites with water, larger suites could be used for conference or meeting rooms
- Located in professional office area

Property Information

Property Type	Commercial
Building Size	8,160 SF
Parking	Paved Parking Lot

This document has been prepared by Colliers for advertising and general information only. Colliers makes no guarantees, representations or warranties of any kind, expressed or implied, regarding the information including, but not limited to, warranties of content, accuracy and reliability. Any interested party should undertake their own inquiries as to the accuracy of the information. Colliers excludes unequivocally all inferred or implied terms, conditions and warranties arising out of this document and excludes all liability for loss and damages arising there from. This publication is the copyrighted property of Colliers and /or its licensor(s). © 2024. All rights reserved. This communication is not intended to cause or induce breach of an existing listing agreement. Colliers Magic Valley, LLC.

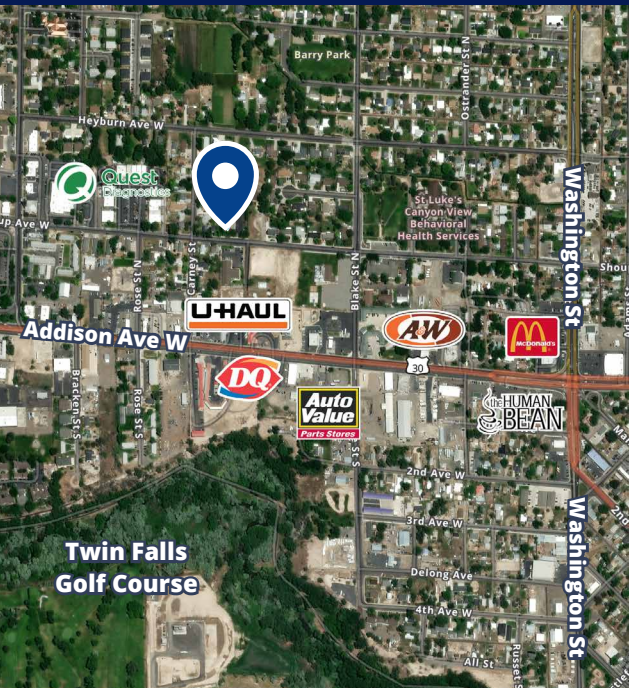
Location



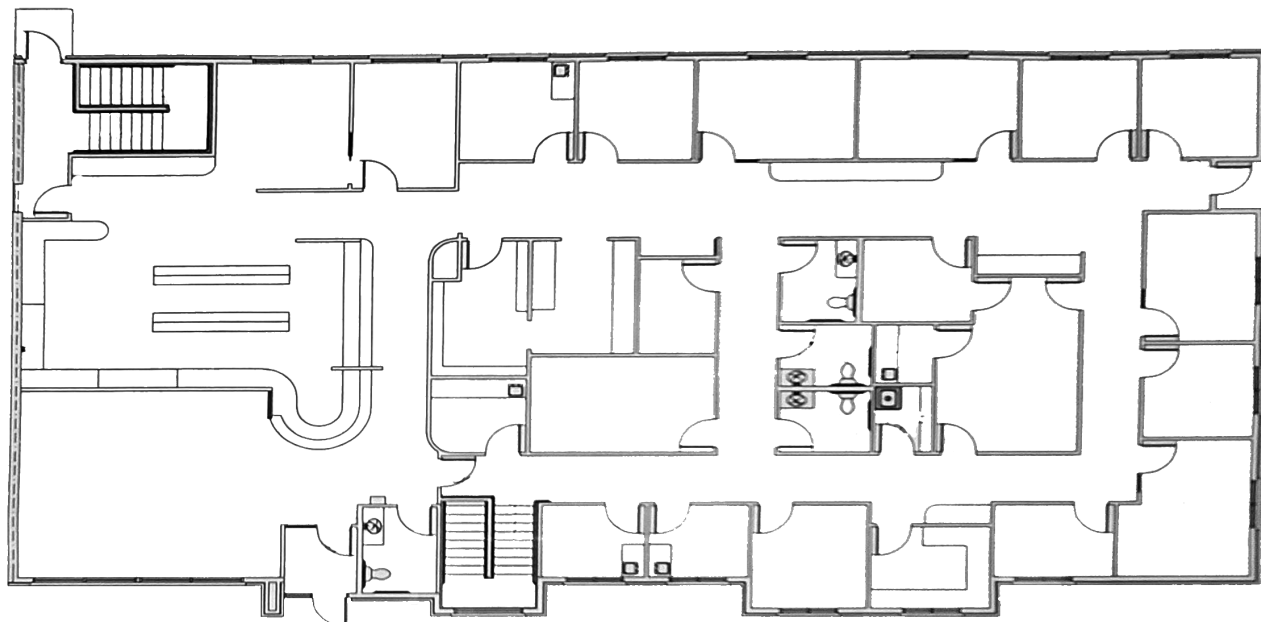
[Google Map](#)



[Street View](#)



Floor Plan



205 Shoshone Street N, Suite 201
Twin Falls, Idaho 83301
208 910 2006
colliers.com/idaho