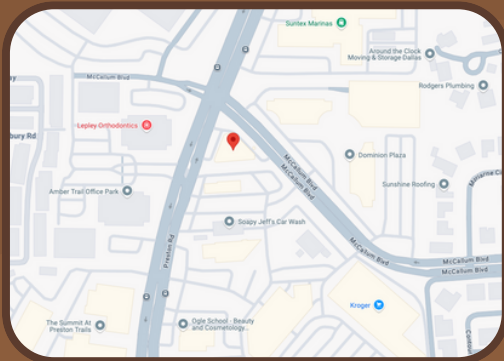


ABOUT US

The Preston McCallum Center at 17290 Preston Road in Dallas provides convenient access to major highways. It's close to the Dallas North Tollway, which offers a direct route south to downtown Dallas, and it's also near the President George Bush Turnpike, which connects to I-635 and other key routes around the metro area. This location provides easy travel options for commuters heading across the Dallas-Fort Worth region.



Property Highlights

- ➔ Convenient access to shopping and restaurants
- ➔ 2024 HVAC System
- ➔ Location is close to all highways
- ➔ Space can be customized to fit your needs.

WHY CHOOSE US

Prime spot for Corporate Offices, Medical Services, Consulting Firms, Real Estate Ventures, Mortgage and Title Companies, Legal Practices, CPAs, Insurance Agencies, Builders, Tech Innovators, Freelancers, Software Companies, and more!

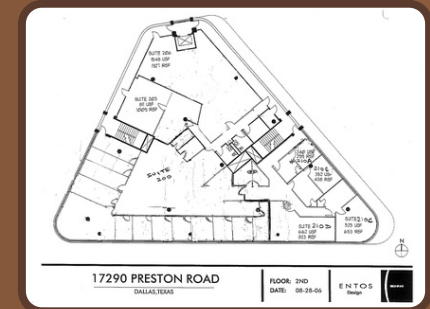
17290

PRESTON MCCALLUM CENTER

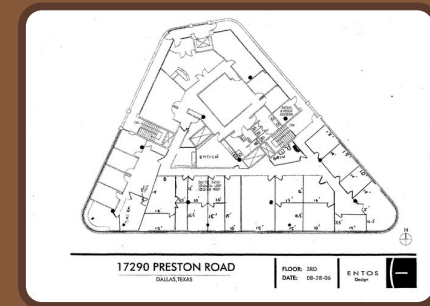
DALLAS, TX 75252



1
S
T
F
L
O
O
R



2
N
D
F
L
O
O
R



3
R
D
F
L
O
O
R

CONTACT US

- ☎ 214-403-8911
- 📍 17218 Preston Rd Suite #2200
Dallas TX 75252
- ✉ chitra@cgaworldwide.com

**CG & ASSOCIATES REALTY
ADVISORS**

