



14728 Pipeline Ave

14728 Pipeline Ave, Chino Hills, CA 91709

Donny Liu

Donan Investment LLC

14728 Pipeline Ave, Chino Hills, CA 91709

donny12345@gmail.com

(626) 678-3725



14728 Pipeline Ave

\$33.60 /SF/YR

Prime Office Space for Lease – The Courts, Chino Hills
Address: Suite A, 2nd Floor,
14728 Pipeline ave suite A, chino hills CA 91709
The Courts, Chino Hills

Highlights: Premium location in the heart of Chino Hills' core business district

This well-appointed second-floor office suite offers an ideal environment for professional operations.

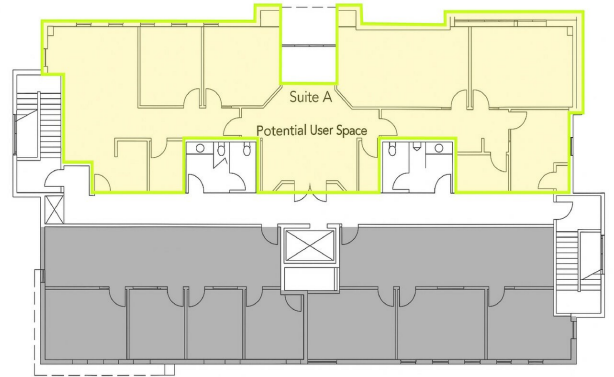
The space features 6 private offices, including one large meeting/training room and five open workstations, providing flexibility for both private and collaborative work settings.

Perfect for CPA firms, law offices, real estate agencies, financial institutions, marketing firms, or as a regional headquarters.

The suite can be divided into East and West wings, allowing for multi-entity use or team separation within the same organization....

- Excellent Location
- Plenty of Parking
- Well-Maintained Property

Second Floor



Rental Rate:	\$33.60 /SF/YR
Min. Divisible:	900 SF
Property Type:	Office
Building Class:	B
Rentable Building Area:	11,237 SF
Year Built:	2007
Walk Score ®:	77 (Very Walkable)
Rental Rate Mo:	\$2.80 /SF/MO

1st Floor Ste A

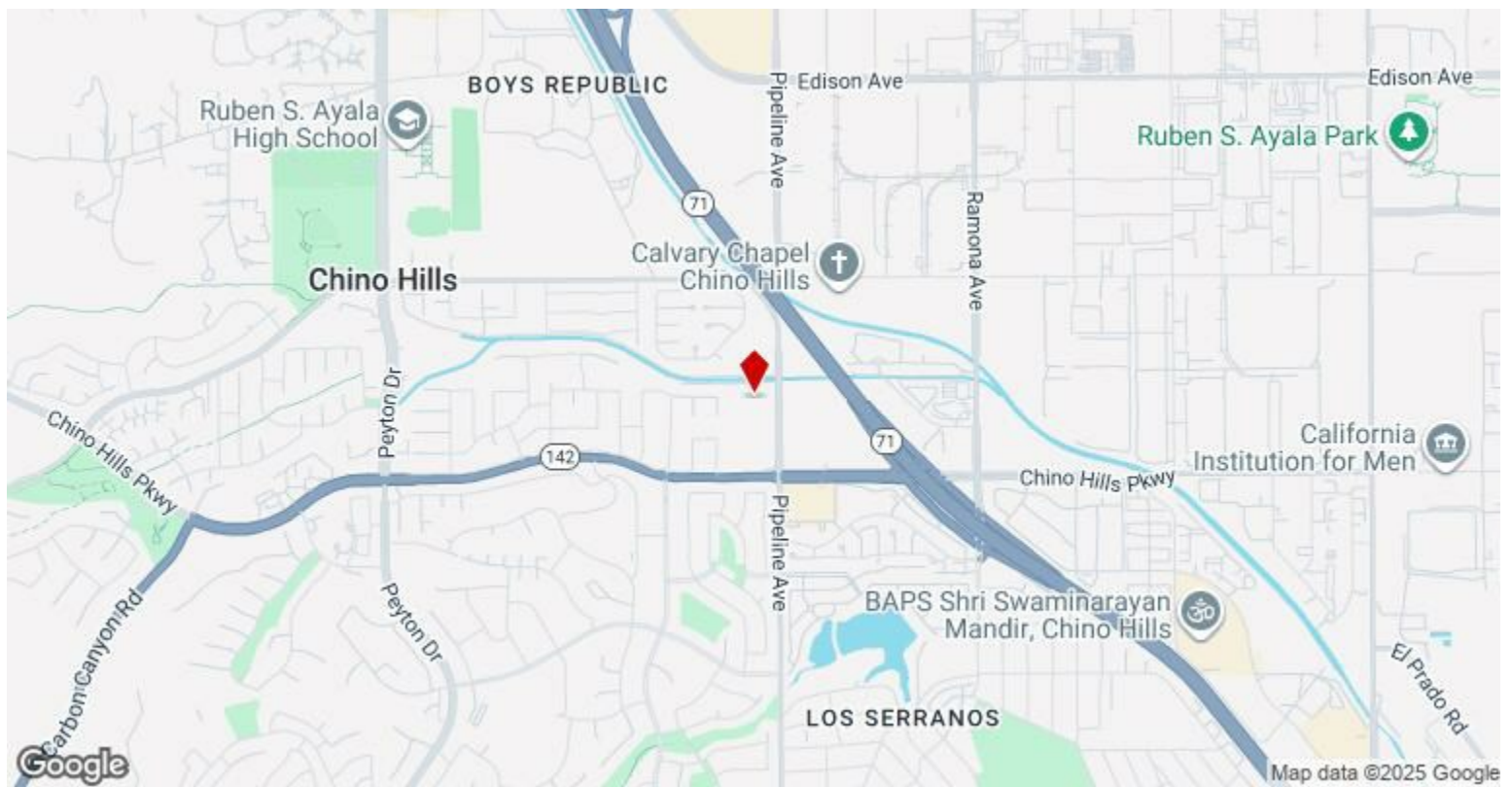
Space Available	3,045 SF
Rental Rate	\$33.60 /SF/YR
Date Available	January 05, 2026
Service Type	Plus Electric
Built Out As	Standard Office
Space Type	Relet
Space Use	Office
Lease Term	Negotiable

Prime Office Space for Lease – The Courts, Chino Hills
Address: Suite A, 2nd Floor, 14728 Pipeline ave suite A, chino hills CA 91709
The Courts, Chino Hills
Highlights: Premium location in the heart of Chino Hills' core business district
This well-appointed second-floor office suite offers an ideal environment for professional operations. The space features 5 private offices, plus one large meeting/training room and 5 open workstations, providing flexibility for both private and collaborative work settings. Perfect for CPA firms, law offices, real estate agencies, financial institutions, marketing firms, or as a regional headquarters. The suite can be divided into East and West wings, allowing for multi-entity use or team separation within the same organization.

1st Floor Ste Sublease A

Space Available	900 - 1,500 SF
Rental Rate	\$33.60 /SF/YR
Date Available	January 01, 2026
Service Type	Plus Electric
Built Out As	Standard Office
Space Type	Relet
Space Use	Office
Lease Term	Negotiable

This is sublease from suite A, including 2 private offices, 3 open working station, 1 kitchen, with individual access door access. Good places in heart of chino hills.



14728 Pipeline Ave, Chino Hills, CA 91709

Prime Office Space for Lease – The Courts, Chino Hills

Address: Suite A, 2nd Floor,
14728 Pipeline ave suite A, chino hills CA 91709

The Courts, Chino Hills

Highlights: Premium location in the heart of Chino Hills' core business district

This well-appointed second-floor office suite offers an ideal environment for professional operations.

The space features 6 private offices, including one large meeting/training room and five open workstations, providing flexibility for both private and collaborative work settings.

Perfect for CPA firms, law offices, real estate agencies, financial institutions, marketing firms, or as a regional headquarters.

The suite can be divided into East and West wings, allowing for multi-entity use or team separation within the same organization.

Property Photos



Property Photos



image4



Suite B - Inside

Property Photos



Property Photos



Property Photos



Property Photos

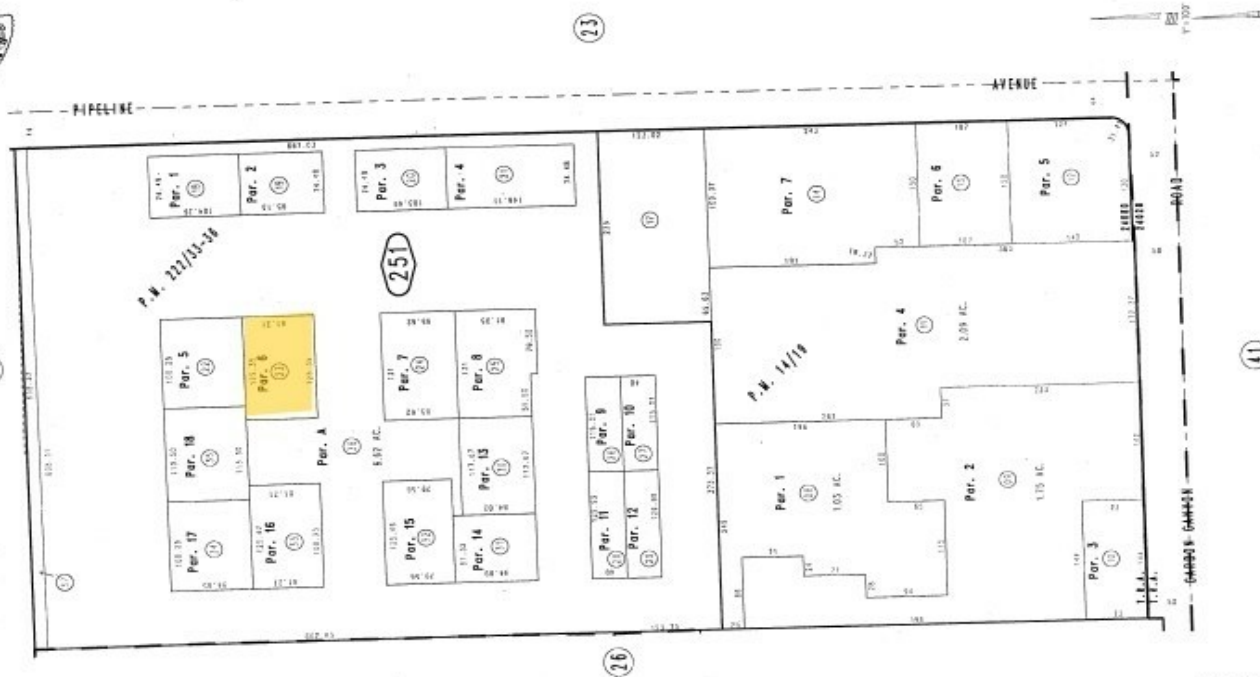


Property Photos

THIS MAP IS FOR THE PURPOSE
OF ASSESSOR'S TAXATION ONLY.

Ptn. Parcel Map 1566, P.M. 14/19

City of China Hills 1025 - Z
Tax Rate Area
24080,24028



JUNE 1972

Parcel Map No. 18399, P.M. 222/33-36

Ptn. N.E. 1/4, Sec. 21
T.2S., R.8W.

Assessor's Map
Book 1025 Page 25
San Bernardino County

JUL 08 2015

REMOVED
06/10/15 CR