

MEDICAL OFFICE SPACE FOR SUBLEASE 950 N WYOMISSING BLVD

Berkshire Heights - Wyomissing, PA 19610

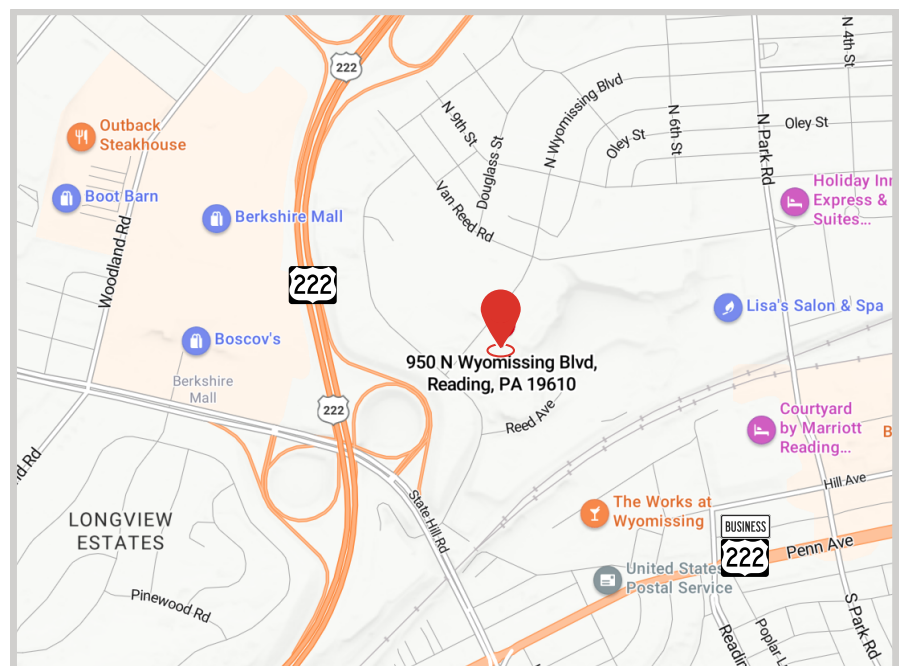


6,363 SF AVAILABLE FOR SUBLEASE



Property Highlights

- 6,363 SF Medical Office for sublet from Tower Health
- Entire First Floor
- Reception Area
- Waiting Area
- Treatment Room
- Bathrooms (4)
- 2 Offices
- Changing rooms
- 6 exam rooms
- Lab
- Xray and DEXA-Scan Rooms
- Easy access to Routes 222 and 422
- Signage



MEDICAL OFFICE SPACE FOR SUBLEASE

950 N WYOMISSING BLVD

Berkshire Heights - Wyomissing, PA 19610



6,363 SF AVAILABLE FOR SUBLET

Features

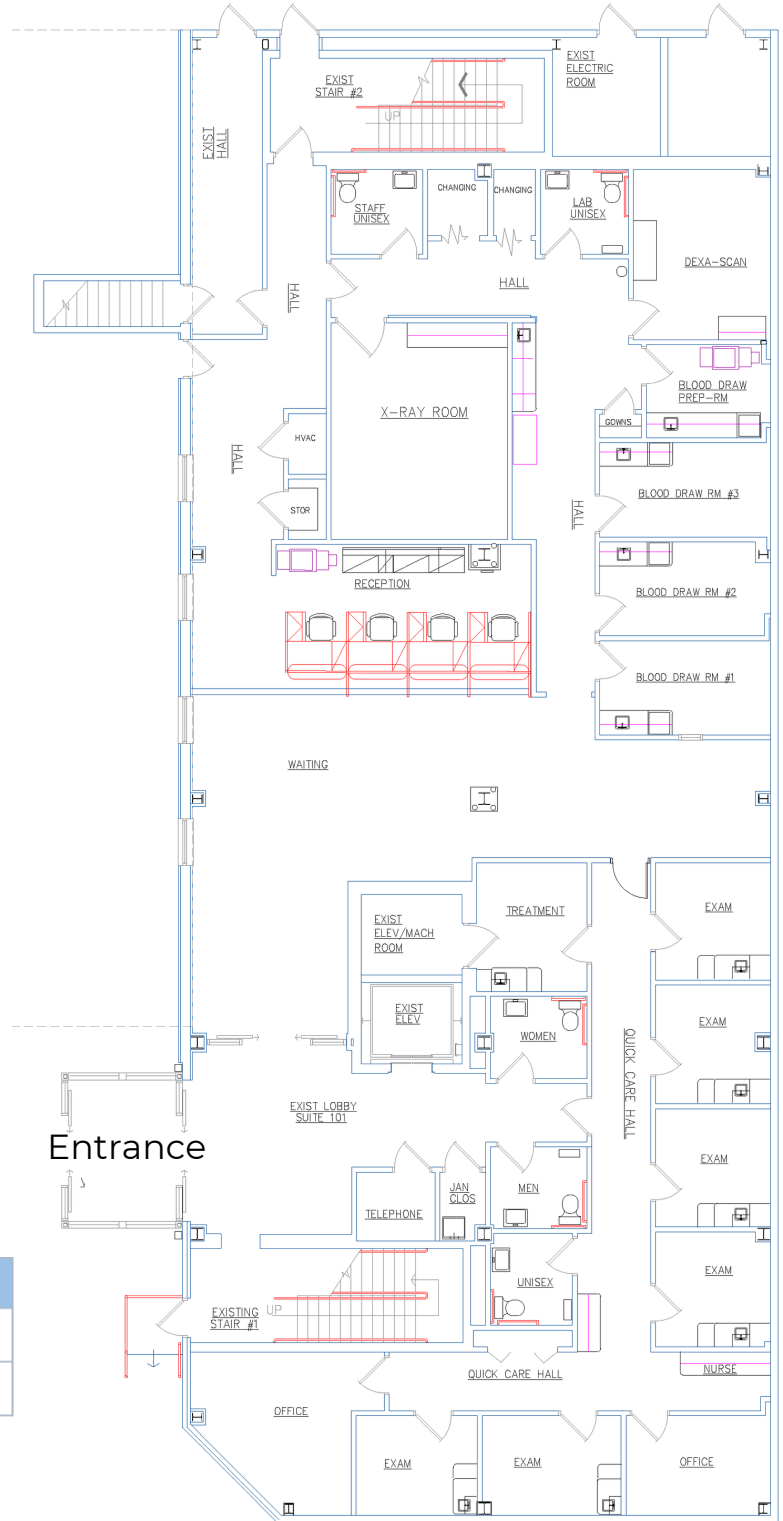
Discover the perfect setting for your medical practice in the heart of Wyomissing, PA. This first-floor medical office space, offers a rare combination of functionality, convenience, and modern appeal.

Modern Design: This medical office space boasts a contemporary design, providing a professional and welcoming environment for your patients. With state-of-the-art facilities, including a phlebotomy lab, exam rooms, an imaging room, and private offices you can deliver exceptional healthcare services seamlessly.

Furnished Options Available: Save time and resources with the option to utilize existing furnishings. The space is thoughtfully arranged to optimize functionality, allowing you to focus on what matters most – your patients.

Strategic Location: Conveniently situated on the first floor, accessibility is a priority. Enjoy easy ingress and egress for patients and staff. Proximity to major highways ensures that your medical practice remains connected, making it effortless for patients to reach you.

Ample Parking: Patients will appreciate the convenience of ample parking, ensuring a stress-free visit. The ease of access extends to major highways, facilitating smooth commuting for both patients and staff.



2023	2 mile	5 mile	10 mile
Population	60,203	206,657	311,442
Households	23,265	77,854	117,122

Schedule a viewing today and take the first step toward a thriving healthcare environment.

Bob Cook | 267-847-7609 | bcook@jacksoncross.com / Mike Barnes | 610-733-9398 | mbarnes@jacksoncross.com

Information concerning this offer is from sources deemed reliable, but no warranty is made as to the accuracy thereof and it is submitted subject to errors, change of price or other conditions, prior sale or lease withdraw without notice. Jackson Cross Partners, any cooperating broker, and any salesperson working with either, are representing the owner's interest and fiduciary responsibilities to the owner, but are obligated to treat all parties fairly.

Jackson Cross Partners | 151 S. Warner Road, Wayne PA 19087 | 610-265-7700 | www.jacksoncross.com

MEDICAL OFFICE SPACE FOR SUBLEASE

950 N WYOMISSING BLVD

Berkshire Heights - Wyomissing, PA 19610



6,363 SF AVAILABLE FOR SUBLET



Entrance



Exam Room



Reception Area



Lab Area