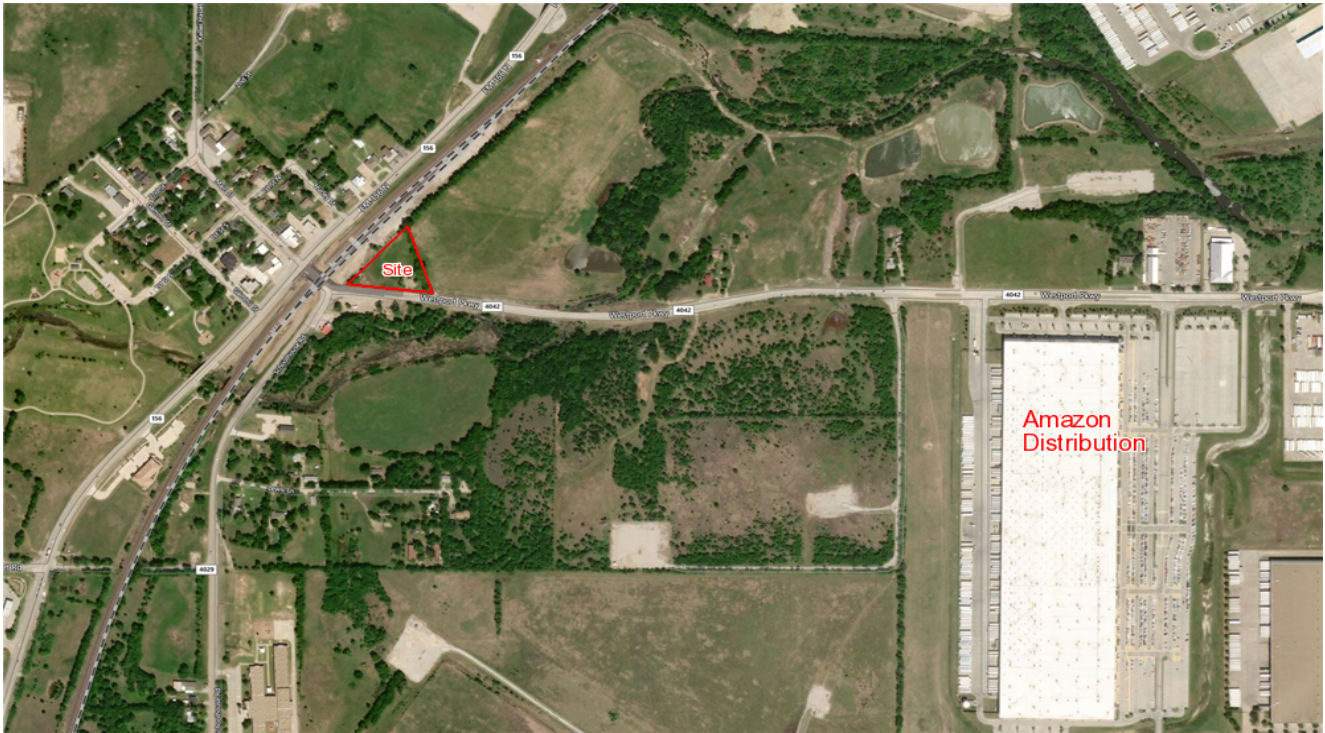


BP**BAUCUM
PROPERTIES**

Available For Sale

1.83 Ac Commercial in Haslet Tx



105 Westport Parkway Located at the northeast quadrant of Hwy 156 and Westport Parkway, Haslet, Texas

Zoning: Commercial with Old Town Core Special Overlay District allowing for walkable commercial and retail uses.

Utilities: City water and sewer are located to the site

Frontage: Approximately 425 ft of frontage along Westport Parkway

Ideally located in the high growth Alliance Corridor approximately 2 miles west of I35W

PRICE: \$750,000

BP

CONTACT:
BRUCE BAUCUM (817) 223-3928
bruce@baucumproperties.com

P. O. Box 161824 FORT WORTH, TEXAS, 76161

Information contained herein is furnished from sources deemed reliable but is not guaranteed and is subject to change in price, corrections, errors and omissions, prior sales or withdrawal without notice.