



**MUST BE SHOWN BY APPOINTMENT ONLY
PLEASE DO NOT DISTURB OCCUPANT**

INDUSTRIAL BUILDING FOR SALE

±20,150 SF

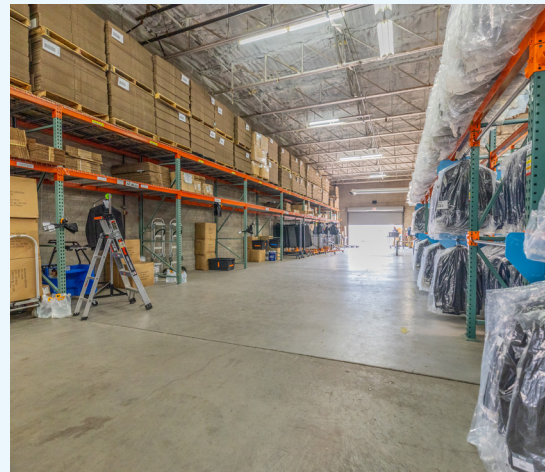
Jay Krew

O: 480.887.0638 M: 602.768.3704

jay.krew@orionprop.com

PROPERTY OVERVIEW

- 18' Clear Height
- Dock High Loading + Grade Level Loading
- Five (5) Overhead Doors
- HVAC Warehouse



Sale Price: **Negotiable**
Contact Broker

APN: **121-60-017**

Zoning: **A-2 Zoning,**
City of Phoenix

Parcel Size: **±0.93 Acres**

Size: **± 20,150 SF**
± 4,100 SF Office Space
Remodeled 2022

Power: **400 Amps of**
3-Phase Power



FLOOR PLAN





WASHINGTON STREET

28TH STREET

PHX

PHOENIX SKY HARBOR
INTERNATIONAL AIRPORT