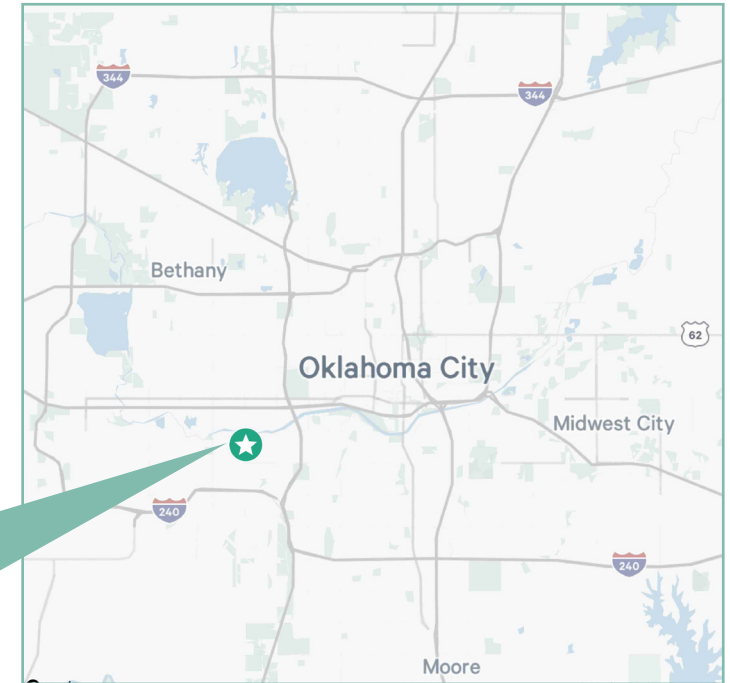


Meridian Business Center 1

SW 21st & Meridian Ave
Oklahoma City, OK 73108

Lease Rate: \$8.50 - \$8.75 NNN

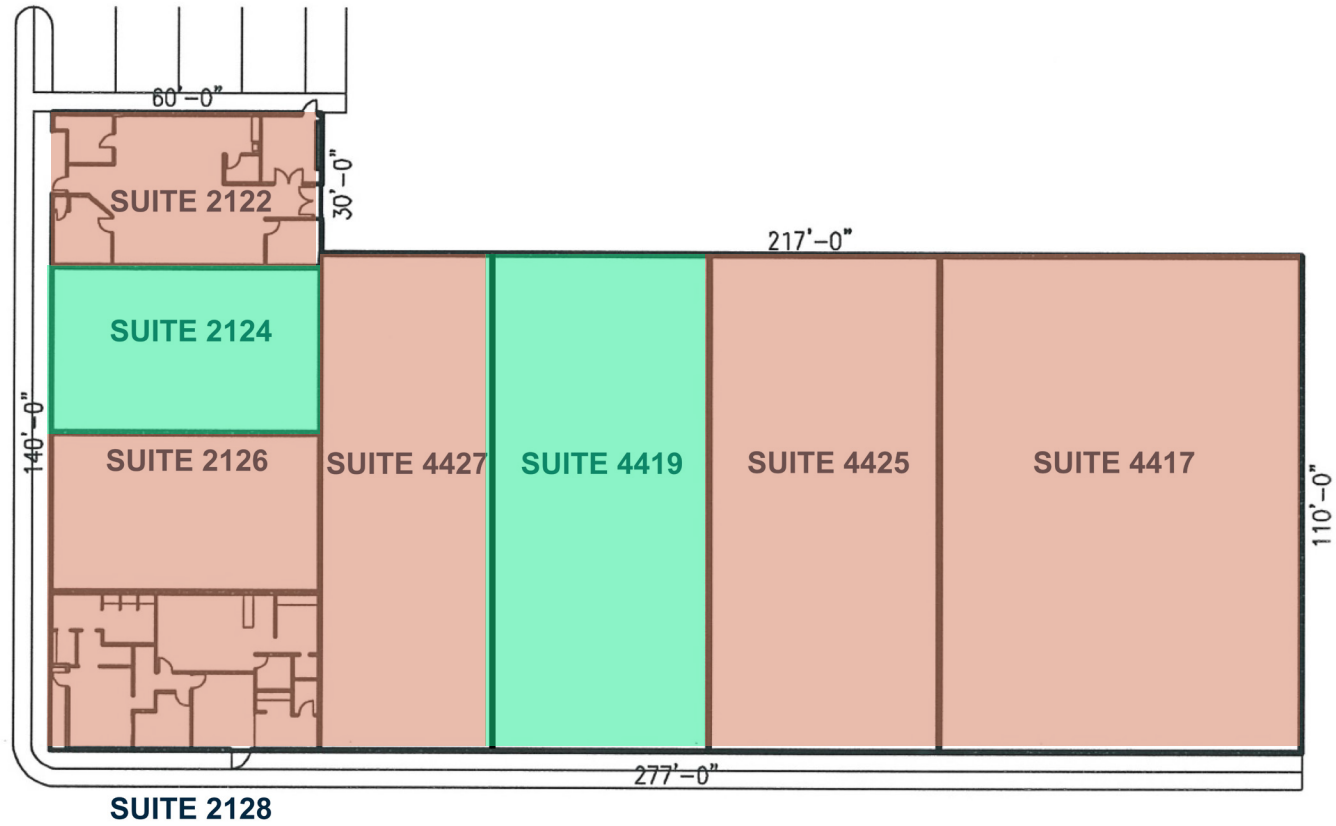


Location Highlights

Meridian Business Center, located at Southwest 21st Street and South Meridian Avenue, consists of two buildings totaling \pm 64,270 square feet.

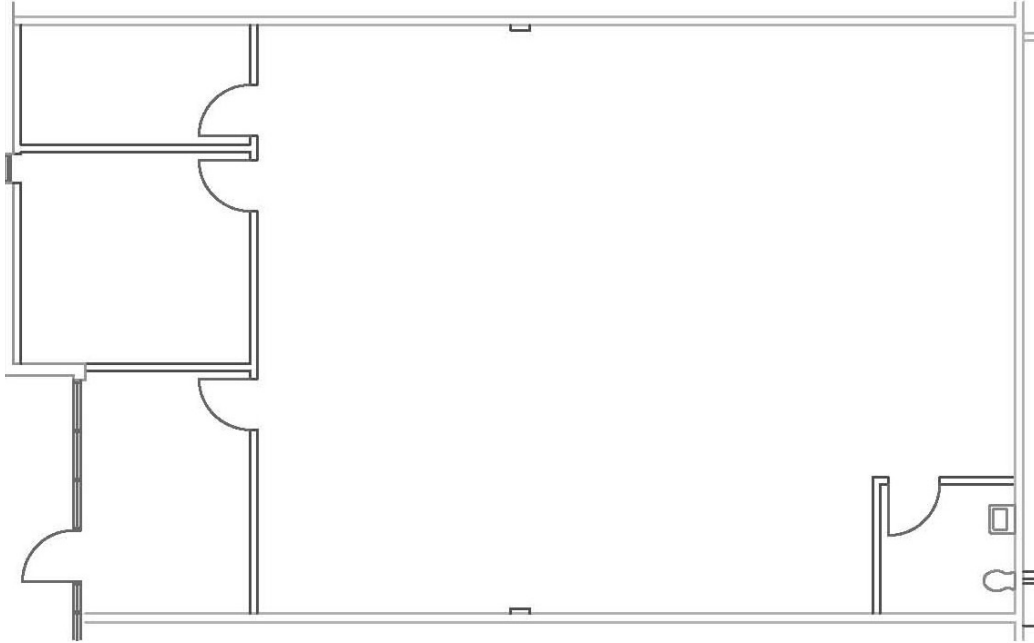
This property is professionally managed, has great curb appeal with the polished landscaping and provides great flexibility for tenants and clients alike.

With a location just 12 miles north of Will Rogers World Airport, it has easy access to I-40, I-44, Airport Rd, and the new turnpike expansion.



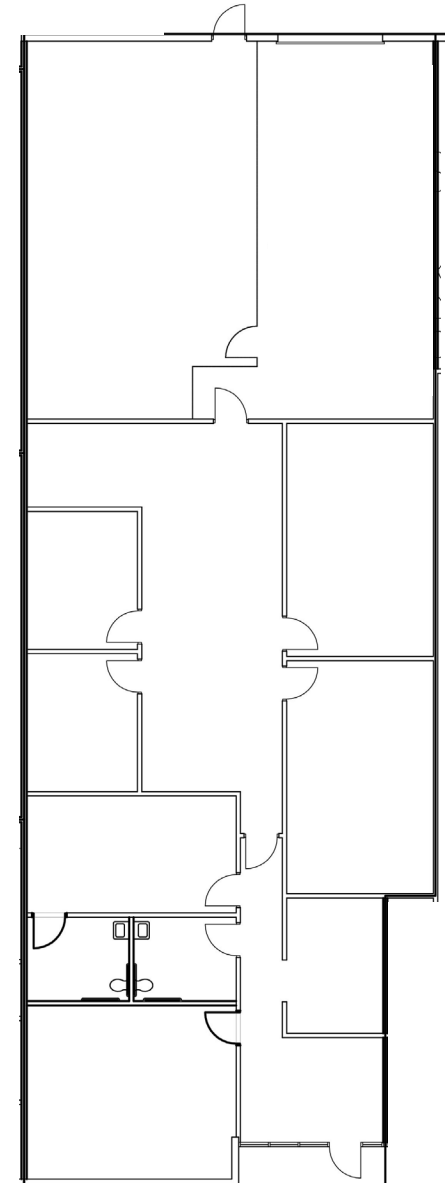
- **Suite 2124**

2,088± Sqaure Feet



- **Suite 4419**

5,610± Sqaure Feet



Aerial of Surrounding Area



Lease Rate: \$8.50 - \$8.75 NNN

Meridian Business Center 1
Flex Space



Contact Us

Jason Hammock, SIOR, CCIM

Vice President

+1 405 315 0725

jason.hammock@cbre.com

Caitlin Mazaheri, SIOR, CCIM

Senior Associate

+1 405 413 2315

caitlin.mazaheri@cbre.com

Joe Summers

Senior Associate

+1 405 831 6851

joe.summers@cbre.com

© 2024 CBRE, Inc. All rights reserved. This information has been obtained from sources believed reliable, but has not been verified for accuracy or completeness. You should conduct a careful, independent investigation of the property and verify all information. Any reliance on this information is solely at your own risk. CBRE and the CBRE logo are service marks of CBRE, Inc. All other marks displayed on this document are the property of their respective owners, and the use of such logos does not imply any affiliation with or endorsement of CBRE. Photos herein are the property of their respective owners. Use of these images without the express written consent of the owner is prohibited.

www.cbre.com/oklahomacity

CBRE