

SALE



MULTIFAMILY

# GOLD APARTMENTS



118 RHODES STREET, ROSELAND, IN 46637

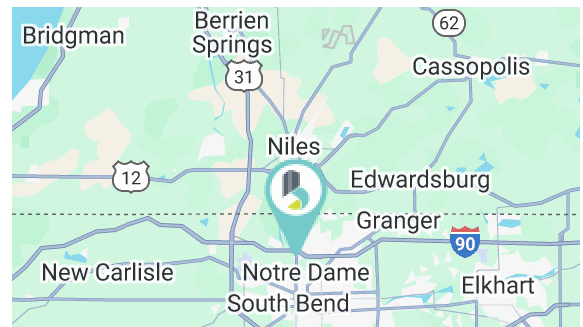
### PROPERTY OVERVIEW

118 Rhodes St, more commonly known as "Gold Apartments", is an 8-unit multifamily building located just off of IN-933 in Roseland, IN. The property is in close proximity to the University of Notre Dame, Holy Cross College, Saint Mary's College, retail amenities, and downtown South Bend. There are 8 - two-bedroom units, each with kitchenette, living room, utility closet, two bedrooms, and two bathrooms. This is an exciting opportunity to acquire a great investment opportunity in the Notre Dame corridor.

### PROPERTY HIGHLIGHTS

- Eight two-bedroom two-bathroom units listed at \$1,400 per month
- Nicely finished units and entryway
- Some units come partially furnished
- Ample surface parking available right outside complex
- Proximal location near the University of Notre Dame, St. Mary's, and Holy Cross College
- Excellent location that also offers great access for any tenants that need to commute for work or take advantage of downtown South Bend amenities
- Value Add opportunity -Tenants currently do not pay their own utilities, however, the building is separately metered for electric and could be transitioned to tenant paid utilities

SALE PRICE	\$1,000,000
Number of Units:	8
Price/Unit:	\$125,000
Lot Size:	0.33 Acres
Building Size:	8,418 SF
Year Built:	2007
Zoning:	Residential



**BRADLEY COMPANY**  
112 W. Jefferson Blvd., Suite 300  
South Bend, IN 46601  
574.237.6000

**DAN SKODRAS**  
Senior Vice President  
574.237.6052  
dskodras@bradleyco.com

**BRENDAN BRADLEY**  
Senior Broker  
574.850.4927  
bbradley@bradleyco.com

**MATT WETZEL**  
Senior Vice President  
574.970.9006  
mwetzel@bradleyco.com



BRADLEYCO.COM

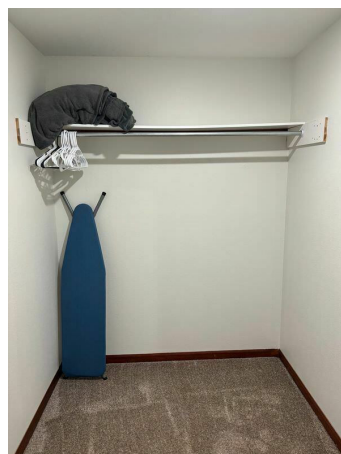
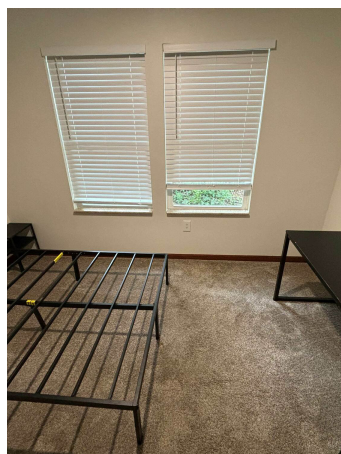
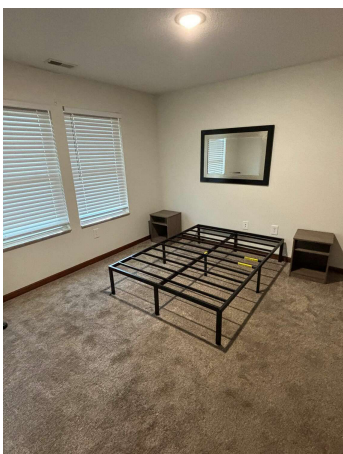
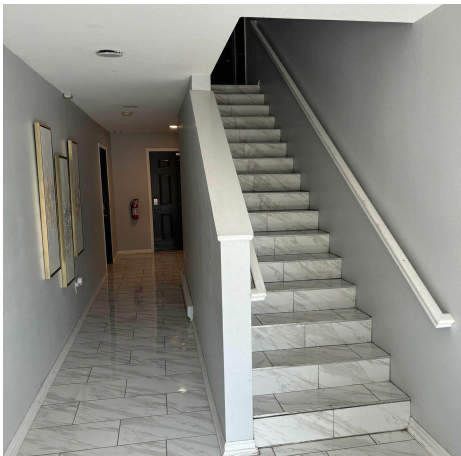
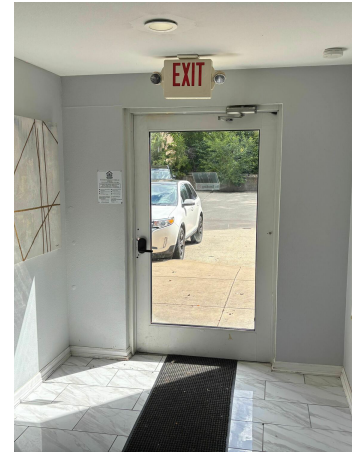




118 RHODES STREET, ROSELAND, IN 46637

SALE

MULTIFAMILY



**DAN SKODRAS**  
Senior Vice President  
574.237.6052  
dskodras@bradleyco.com

**BRENDAN BRADLEY**  
Senior Broker  
574.850.4927  
bbradley@bradleyco.com

**MATT WETZEL**  
Senior Vice President  
574.970.9006  
mwetzel@bradleyco.com





118 RHODES STREET, ROSELAND, IN 46637

SALE

MULTIFAMILY



**DAN SKODRAS**  
 Senior Vice President  
 574.237.6052  
 dskodras@bradleyco.com

**BRENDAN BRADLEY**  
 Senior Broker  
 574.850.4927  
 bbradley@bradleyco.com

**MATT WETZEL**  
 Senior Vice President  
 574.970.9006  
 mwetzel@bradleyco.com

©2025 Bradley Company, LLC and affiliates. Use of any third party name or mark is for informational purposes only and does not indicate sponsorship or endorsement by such party. Not all information has been independently verified, and the presenting broker makes no guarantee about its accuracy. Any projections, opinions, or estimates are for example only. Before completing a real estate transaction, you and your advisors should conduct an independent investigation of the property to determine its suitability for your needs.



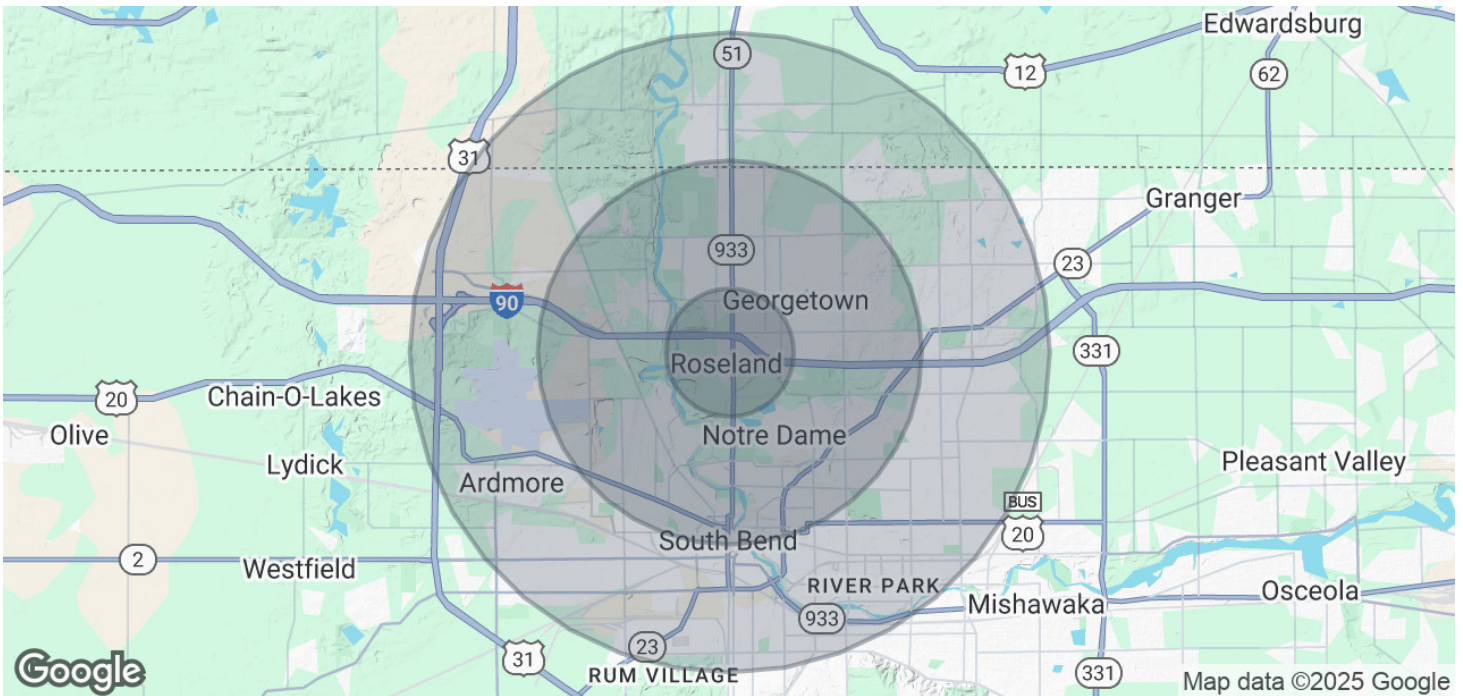


# DEMOGRAPHICS MAP & REPORT

118 RHODES STREET, ROSELAND, IN 46637

SALE

MULTIFAMILY



## POPULATION

	1 MILE	3 MILES	5 MILES
Total Population	3,949	64,581	154,074
Average Age	40	37	38
Average Age (Male)	43	37	37
Average Age (Female)	40	38	39

## HOUSEHOLDS & INCOME

	1 MILE	3 MILES	5 MILES
Total Households	1,349	24,108	60,460
# of Persons per HH	2.9	2.7	2.5
Average HH Income	\$84,753	\$80,514	\$81,785
Average House Value	\$216,545	\$222,751	\$211,548

Demographics data derived from AlphaMap

**DAN SKODRAS**  
Senior Vice President  
574.237.6052  
dskodras@bradleyco.com

**BRENDAN BRADLEY**  
Senior Broker  
574.850.4927  
bbradley@bradleyco.com

**MATT WETZEL**  
Senior Vice President  
574.970.9006  
mwetzel@bradleyco.com