

Adaptable Commercial Suite

100 N. Buckmarsh Street, Berryville, VA 22611



- High-Traffic Intersection
- Well-Maintained
- Paved Off-Street Parking
- Zoned Commercial

FOR LEASE

- 1,054 SF Flex Space for Office/Salon/Creative Concept
- MLS# VACL2005966
- Asking \$1,200/MO NNN

Demographic Summary

	10 mile radius	20 mile radius
Population	32,820	234,179
Projected 5 year growth	0.34	1.28
Median Income	\$105,619	\$100,403
Median Age	40.9	40.1

For more information please contact:
OakCrest Commercial Real Estate

Brett Haynes, **CCIM**

Brett.Haynes@OakCrestCommercial.com

Cell | 540.247.1756

Main | 540.504.0791

126 North Kent Street Winchester, VA 22601

All information regarding this property has been obtained from sources believed to be reliable. We make no guarantee, warranty or representation about it.

It is your responsibility to independently confirm its accuracy and completeness. Any projections, assumptions, opinions or estimate used are for example only and do not represent the current or future performance. You and your advisor should conduct a careful independent investigation of the property

to determine to your satisfaction the suitability of the property for your needs.

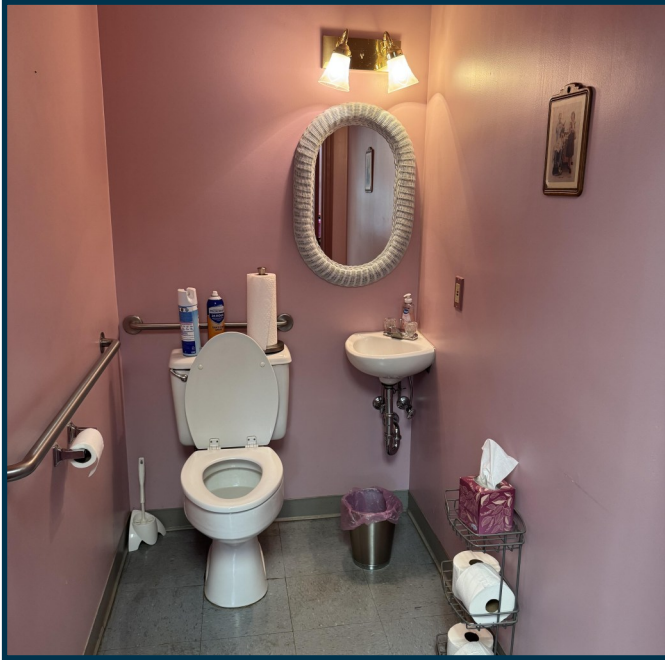
100 N. Buckmarsh Street



100 N. Buckmarsh Street



100 N. Buckmarsh Street



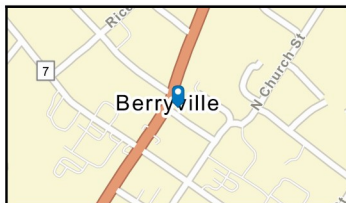
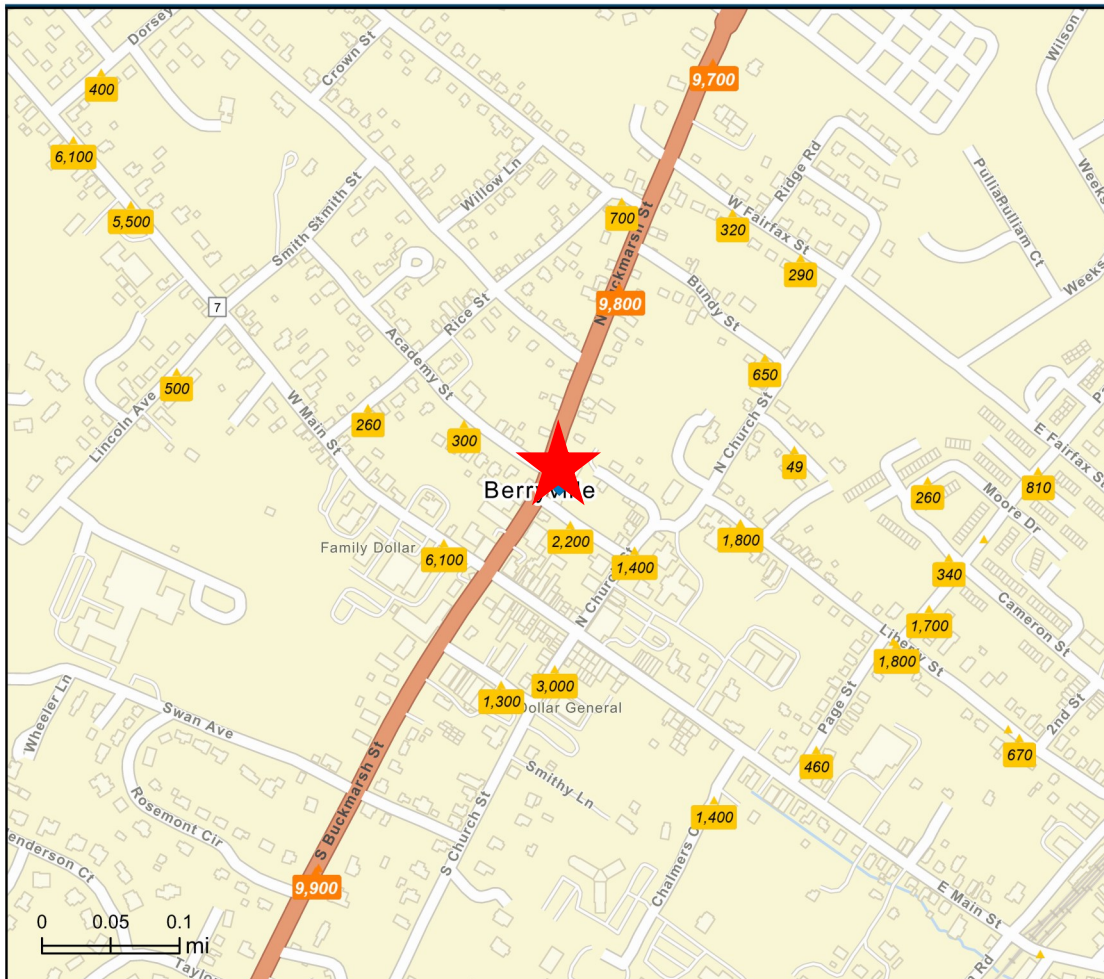
100 N. Buckmarsh Street



Traffic Count Map - Close Up

100 N Buckmarsh St, Berryville, Virginia, 22611
Drive distance: 10, 15, 20 mile radii

Prepared by Esri
Latitude: 39.15257
Longitude: -77.98165



Average Daily Traffic Volume
 ▲ Up to 6,000 vehicles per day
 ▲ 6,001 - 15,000
 ▲ 15,001 - 30,000
 ▲ 30,001 - 50,000
 ▲ 50,001 - 100,000
 ▲ More than 100,000 per day



Source: ©2024 Kalibrate Technologies (Q4 2024).

May 08, 2025

©2025 Esri

Page 1 of 1

100 N. Buckmarsh Street

