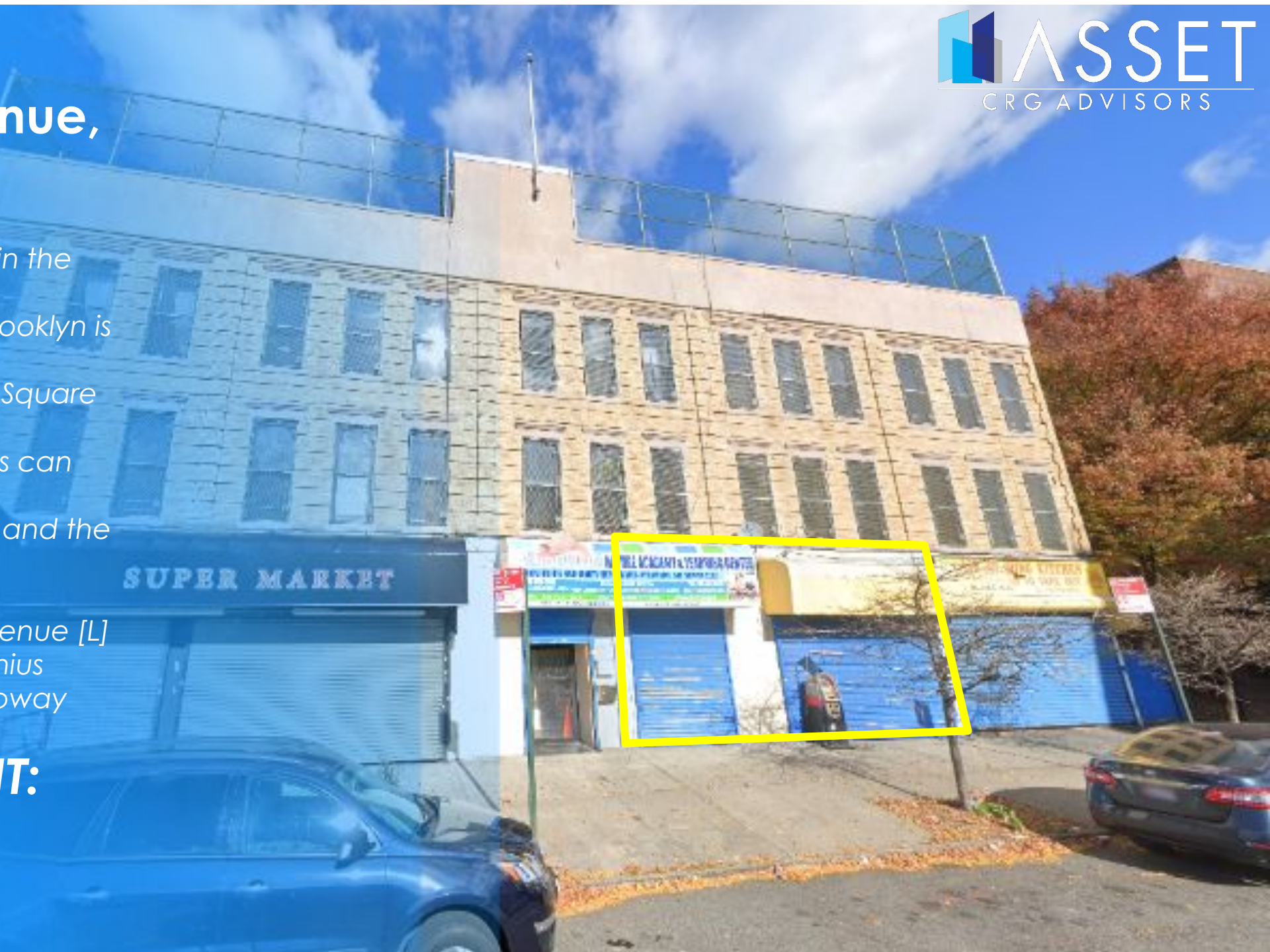


## 531 Blake Avenue, Brooklyn

- ❑ Storefront retail space in the heart of East New York neighborhood of the Brooklyn is available for lease.
- ❑ Space consists of 3,000 Square feet total.
- ❑ Currently two storefronts can be leased separately.
- ❑ One Storefront is 850 SF and the other is 950 SF
- ❑ The property is walking distance from Sutter Avenue [L] Subway Station and Junius Street Station [2,3,4] Subway Station.

**ASKING RENT:**  
**\$35 PPSF**





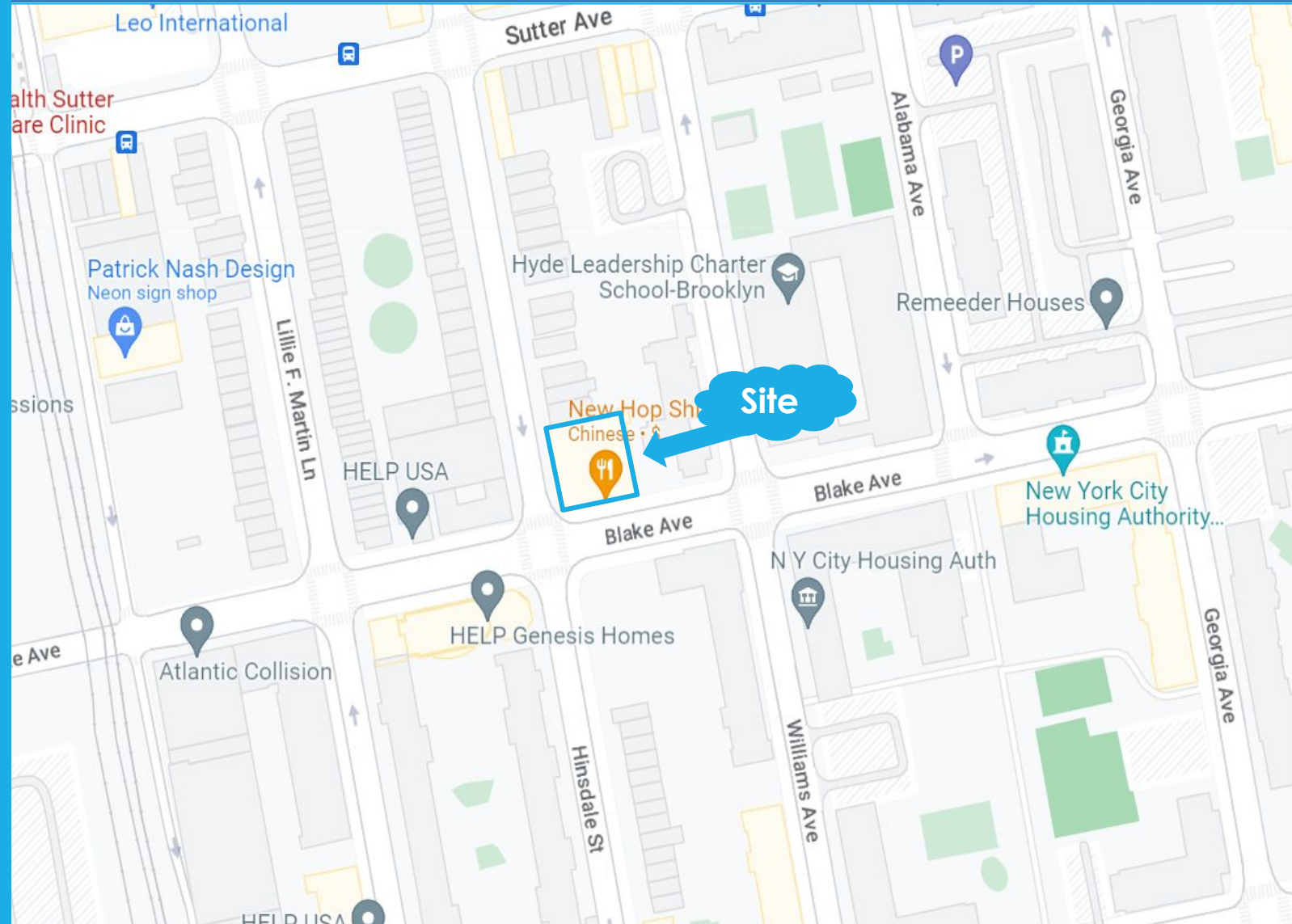
# Investment Highlights

Asset CRG Advisors, LLC has been exclusively retained to market 531 Blake Ave, Brooklyn, retail space in the heart of East New York neighborhood of the Brooklyn.

The space consists of 3,000 retail square feet. The property is located between Hinsdale Street & Williams Ave.

The property is well positioned with **great access to public transportation**, being within walking distance of Sutter Avenue [L] Subway Station and near Junius Street Station [2,3,4] Subway Station.

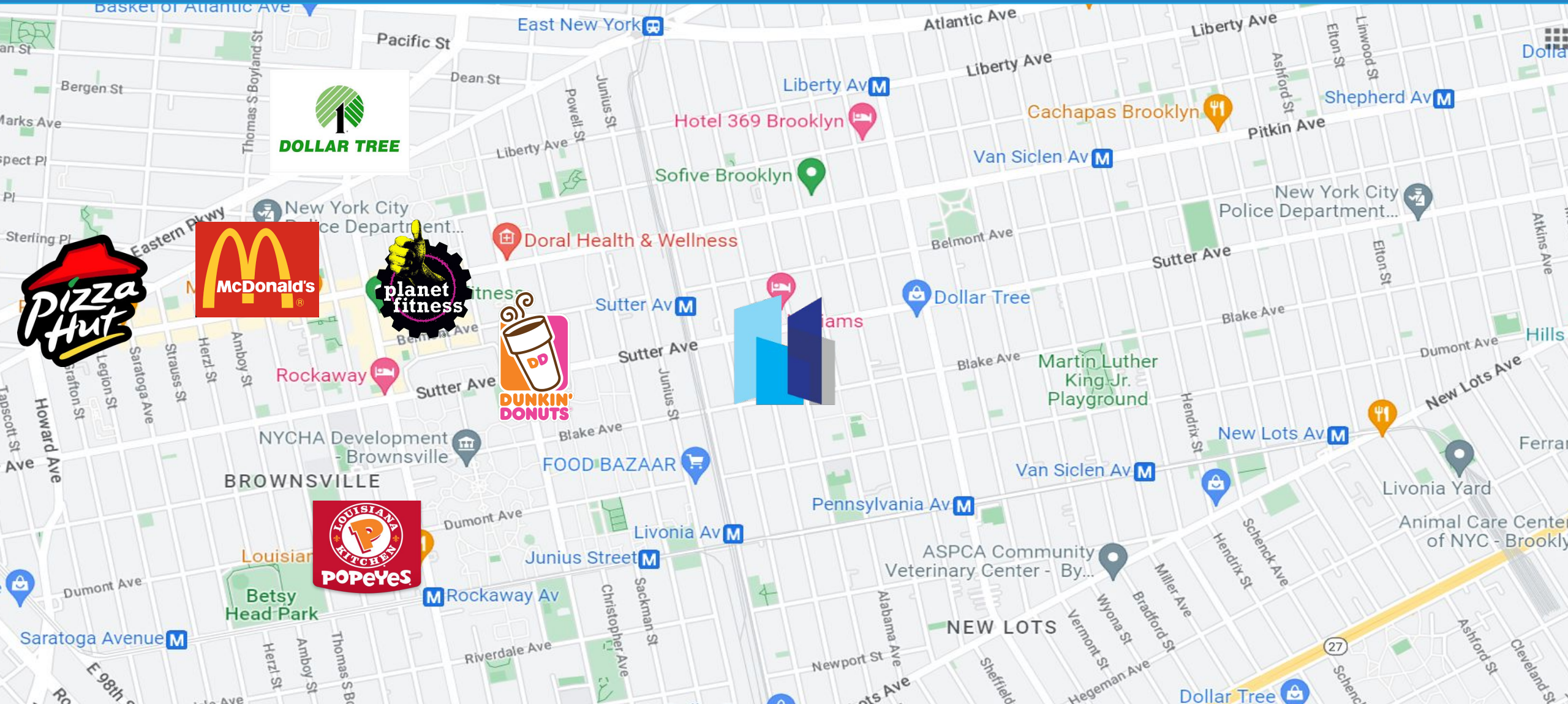
Asking price: \$35 PPSF



Details	
Available	3,000 SF
Block & Lot	3767/1
Neighborhood	East New York
Cross Streets	Hinsdale Street & Williams Ave
Asset Type	Retail
Frontage	30' on Blake Avenue
Zoning	R6, C2-3



# Map

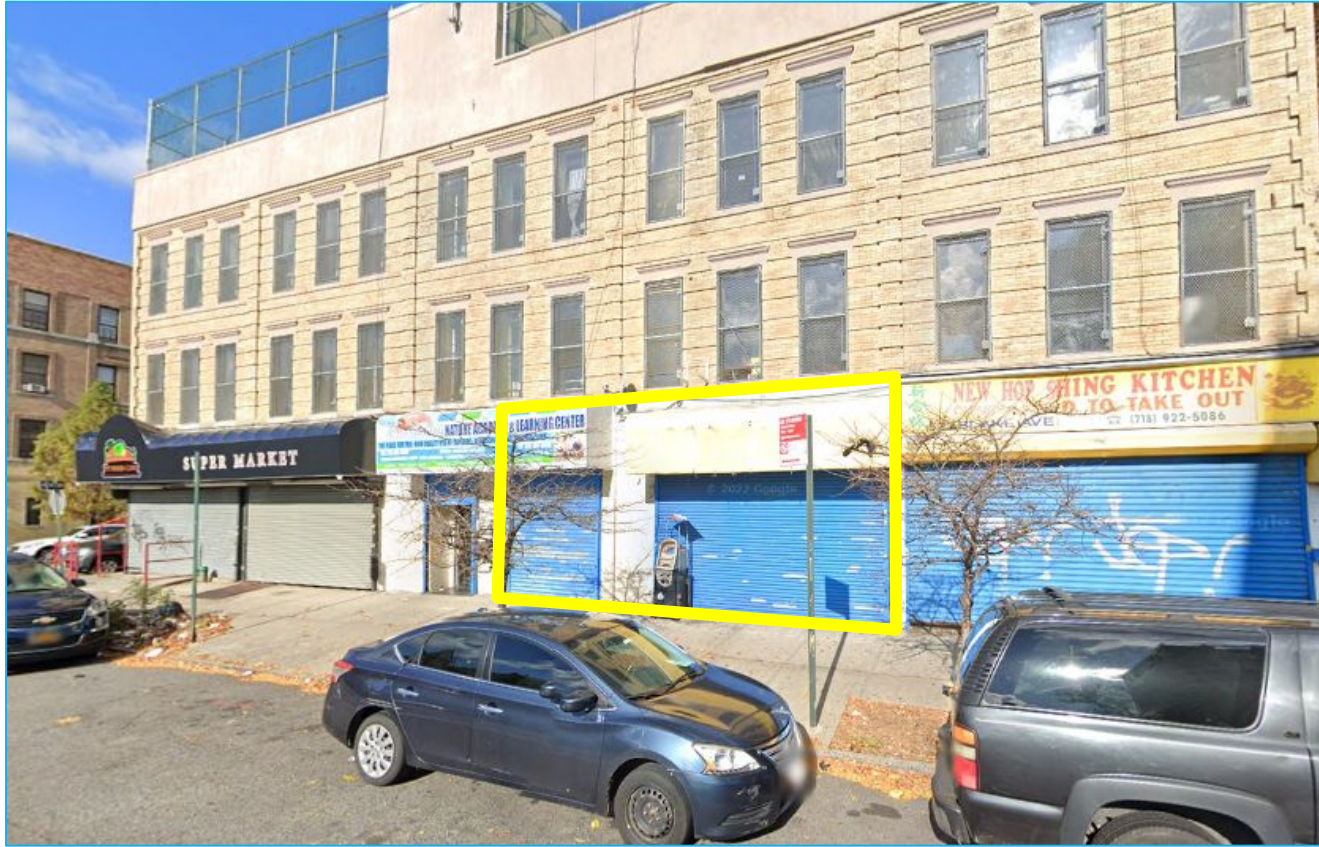


# Confidentiality Disclaimer



The information contained in the following Marketing Brochure is proprietary and strictly confidential. It is intended to be reviewed only by the party receiving it from Asset CRG Advisors, LLC ("AssetCRG Advisors") and should not be made available to any other person or entity without the written consent of AssetCRG Advisors. This Marketing Brochure has been prepared to provide summary, unverified information to prospective purchasers, and to establish only a preliminary level of interest in the subject property. The information contained herein is not a substitute for a thorough due diligence investigation. AssetCRG Advisors has not made any investigation, and makes no warranty or representation, with respect to the income or expenses for the subject property, the future projected financial performance of the property, the size and square footage of the property and improvements, the presence or absence of contaminating substances, PCB's or asbestos, the compliance with State and Federal regulations, the physical condition of the improvements thereon, or the financial condition or business prospects of any tenant, or any tenant's plans or intentions to continue its occupancy of the subject property. The information contained in this Marketing Brochure has been obtained from sources we believe to be reliable; however, AssetCRG Advisors has not verified, and will not verify, any of the information contained herein, nor has AssetCRG Advisors conducted any investigation regarding these matters and makes no warranty or representation whatsoever regarding the accuracy or completeness of the information provided. All potential buyers must take appropriate measures to verify all the information set forth herein.





**PLEASE CONTACT EXCLUSIVE ADVISOR:**



**Isaac Matayev**

Licensed Real Estate Salesperson

Email: [Isaac@assetcrg.com](mailto:Isaac@assetcrg.com)

Direct: 646.684.0037 Mobile: 347.684.0037

**Broker Cooperation is Welcome!**



## **531 Blake Avenue, Brooklyn**

- ❑ Storefront retail space in the heart of East New York neighborhood of the Brooklyn is available for lease.
- ❑ Space consists of 3,000 Square feet total.
- ❑ Currently two storefronts can be leased separately.
  - ❑ One Storefront is 850 SF and the other is 950 SF
- ❑ The property is walking distance from Sutter Avenue [L] Subway Station and Junius Street Station [2,3,4] Subway Station.

**ASKING RENT:  
\$35 PPSF**