

FOR LEASE

38367 COUNTY ROAD 54

1,000 SF RETAIL / COMMERCIAL OFFICE SPACE

- Zephyrhills -

PROPERTY DETAILS:

Address:

38367 CR 54

Parcel ID #:

02-26-21-001B-00000-0050

Zoning:

C2

Leasable Space:

1,000 SF

Lease Rate:

\$16.00 /SF NNN

Available: Ground Level Retail/ Office Space in a Commercial Strip Center in flourishing Zephyrhills. Block Constructed, this Commercial building is solid and Comprised of a 1,000 SF Space that may be leased immediately. The suite offers dual Entryways with front and rear Exits. Additional uses as Commercial Office Space, Light Retail Space, Showroom/ Office and Many Other Types of like Businesses. Suites are leased as is and tenant may build to suit. The parking lot has been re-paved offering 70+/- Customer/ Employee parking spaces, 100' of Road Frontage and easy access onto CR 54. Zoned C2, this is an Incredible Location for Any Type of Commercial Office Use such as an Attorney, Accountant, Real Estate, Mortgage, Chiropractor, Physical Therapy, Educational Services or any other Small Business. New Commercial Growth and Development is Thriving in this Area making this an Excellent Relocation Site or Secondary Office.

Rents are very competitive with the surrounding area and other rental rates. This Strip Center offers a variety of Commercial/ Retail Opportunities. The Potential uses are Endless! **Call Today for a Showing.**



Listing Agent: Tina Marie Eloian, CCIM

tinamarieloian@hotmail.com

Sales | Investments | Leasing | Property Management

7211 N. Dale Mabry Hwy. Suite 101 Tampa, FL 33614
P. 813.935.9600 | F. 813.930.0946
www.flacg.com



FOR LEASE

38367 COUNTY ROAD 54

1,000 SF RETAIL / COMMERCIAL OFFICE SPACE

- Property Photos -



Listing Agent: Tina Marie Eloian, CCIM
tinamarieloian@hotmail.com

Sales | Investments | Leasing | Property Management

7211 N. Dale Mabry Hwy. Suite 101 Tampa, FL 33614
P. 813.935.9600 | F. 813.930.0946
www.flacg.com



FOR LEASE

38367 COUNTY ROAD 54

1,000 SF RETAIL / COMMERCIAL OFFICE SPACE

- Maps and Directions -

DIRECTIONS (from Interstate 75):

Exit 279 North East

Head east on County Rd 54/Wesley Chapel Blvd toward Village Market Continue to follow Wesley Chapel Blvd

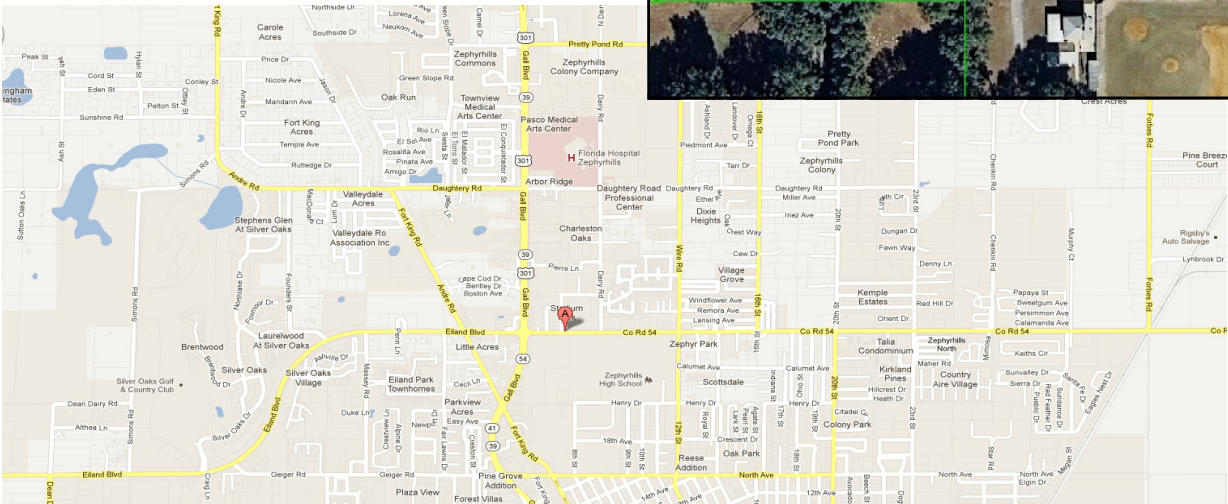
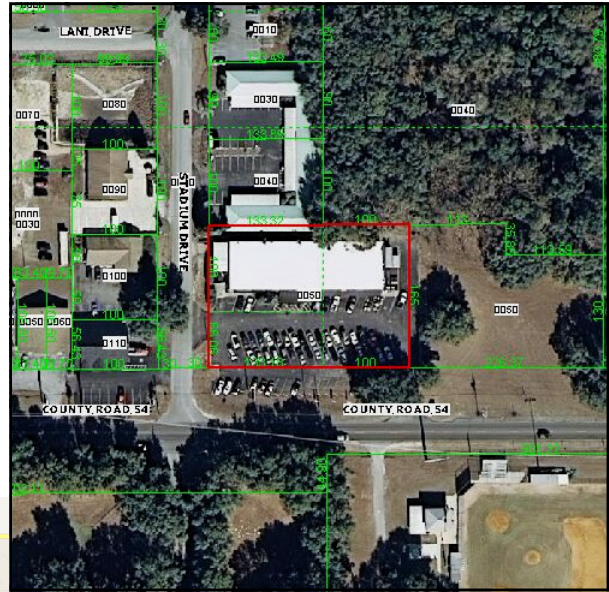
Continue onto State Road 54 E

Turn left onto Gall Blvd

Turn right onto County Road 54

Destination will be on the left:

38367 County Road 54 Zephyrhills, FL 33542



Listing Agent: Tina Marie Eloian, CCIM
tina Marie Eloian@hotmail.com

Sales | Investments | Leasing | Property Management

7211 N. Dale Mabry Hwy. Suite 101 Tampa, FL 33614
P. 813.935.9600 | F. 813.930.0946
www.flacg.com

