



PRAIRIE CENTER SHOPPING CENTER

135th Street & Quivira Road, Overland Park, Kansas



27,995 SF PAD SITE FOR SALE OR LEASE

SALE PRICE: \$750,000 | CALL FOR BTS LEASE PRICING

DEMOGRAPHICS

	1 mile	3 miles	5 miles
Estimated Population	13,498	100,637	240,695
Avg. Household Income	\$150,174	\$133,437	\$126,317

- C-2 zoned pad site
- Anchored by 40,000 +/- SF Drive 5 Sports Center
- Other tenants include CVS Pharmacy, Goodyear, Phillips 66, Great Clips, Smoothie King, Primrose Daycare, Commerce Bank, and many more
- Directly across from a Price Chopper anchored center
- Outstanding visibility from Quivira Road
- Over 33,367 employees work within a 3 mile radius
- Intersection carries over 40,000 cars per day

 [CLICK HERE TO VIEW MORE LISTING INFORMATION](#)

For More Information Contact:

MAX KOSOGLAD | 816.412.7363 | mkosoglad@blockandco.com

DAVID BLOCK | 816.412.7400 | dblock@blockandco.com

Exclusive Agents





PRAIRIE CENTER SHOPPING CENTER

135th Street & Quivira Road, Overland Park, Kansas

27,995 +/- SF
PAD SITE AVAILABLE
FOR SALE OR LEASE

AERIAL



All information furnished regarding property for sale or lease is from sources deemed reliable, but no warranty or representation is made as to the accuracy thereof and the same is subject to errors, omissions, changes of prices, rental or other conditions, prior sale or lease or withdrawal without notice.

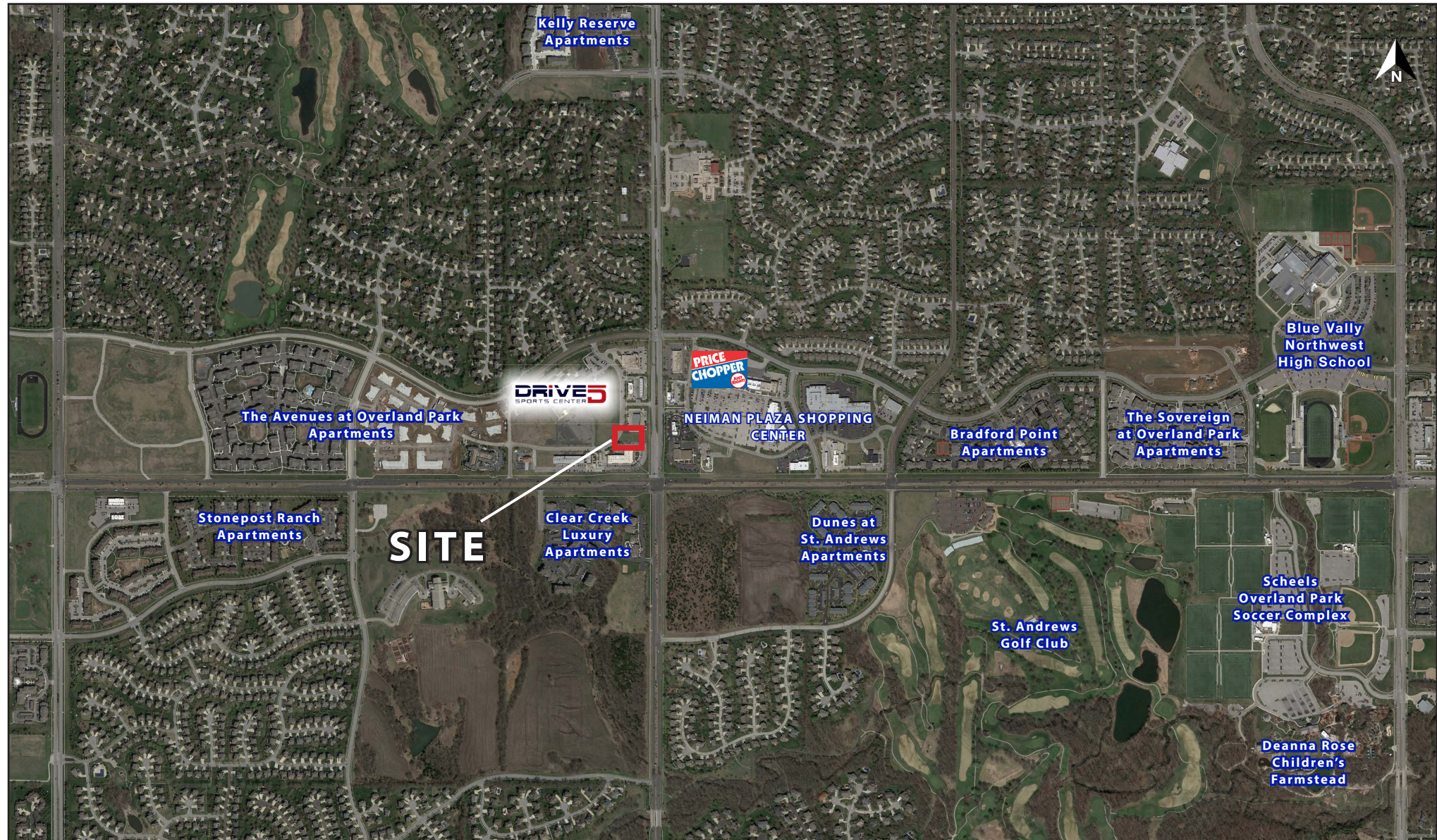


PRAIRIE CENTER SHOPPING CENTER

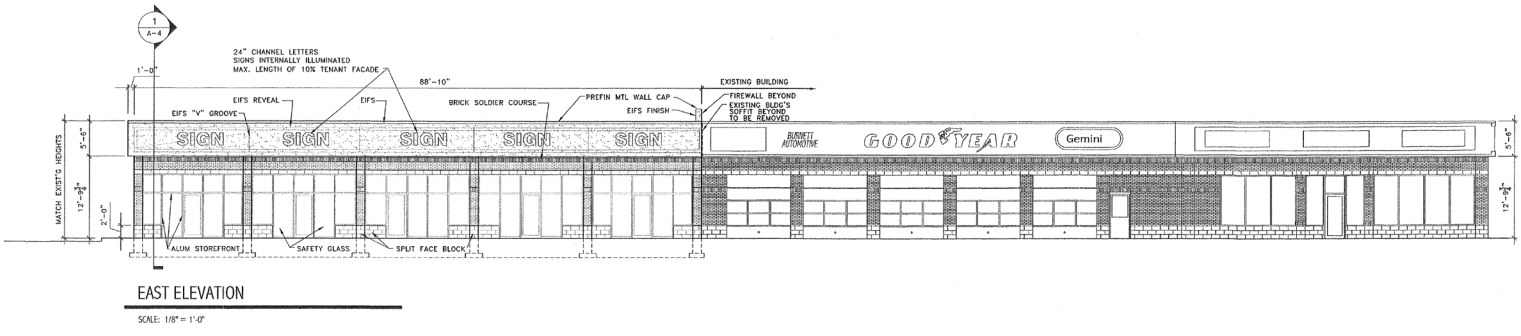
135th Street & Quivira Road, Overland Park, Kansas

27,995 +/- SF
PAD SITE AVAILABLE
FOR SALE OR LEASE

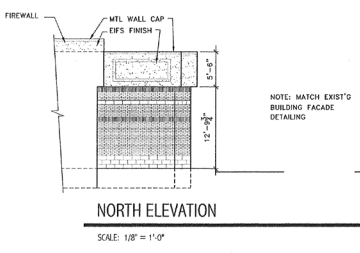
AERIAL



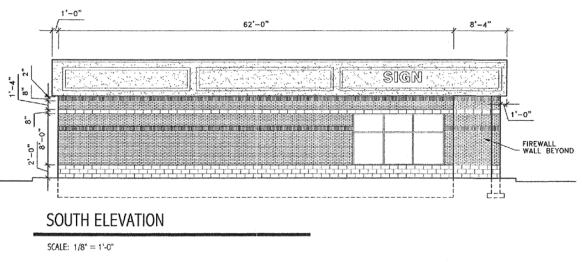
ELEVATIONS



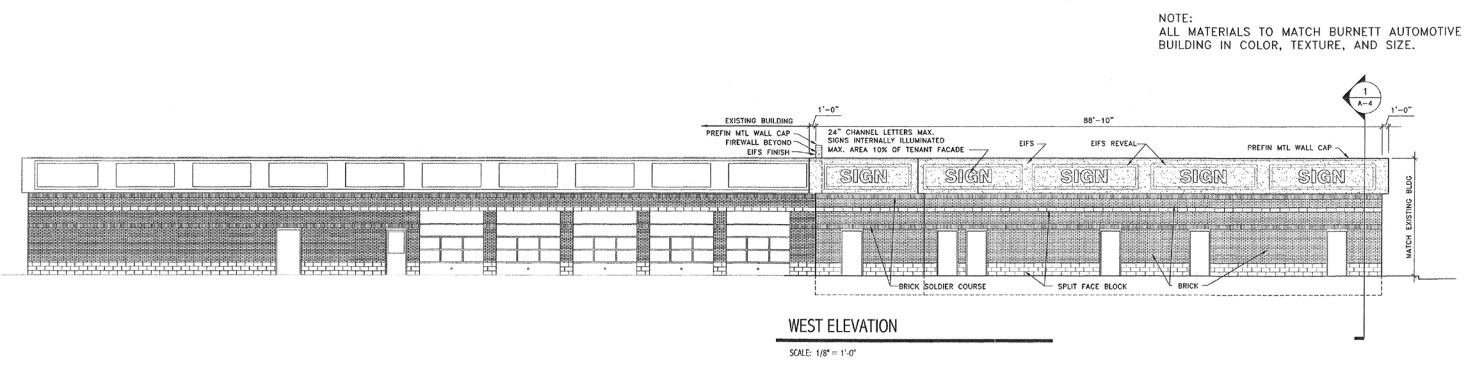
EAST ELEVATION
SCALE: 1/8" = 1'-0"



NORTH ELEVATION
SCALE: 1/8" = 1'-0"



SOUTH ELEVATION
SCALE: 1/8" = 1'-0"



WEST ELEVATION
SCALE: 1/8" = 1'-0"

NOTE:
ALL MATERIALS TO MATCH BURNETT AUTOMOTIVE
BUILDING IN COLOR, TEXTURE, AND SIZE.



KMF

Kenneth M. Froshier & Associates
architects, interior architects,
planners
620 S.E. M-291 HIGHWAY, #104
Lee's Summit, Mo 64063
816-525-6602

Copyright reserved by Kenneth M. Froshier & Associates, Inc. All rights reserved. No part of this drawing may be reproduced without the written permission of the architect.

REVISIONS
3/25/05
5/25/05

JOB NO.
DATE
DRAWN BY
CHECKED

**BLOCK & CO. NEW RETAIL
PRAIRIE CENTER SHOPPING
LOT 4, 135th & QUIVIRA
OVERLAND PARK, KS.**

SHEET NUMBER
A3

NEIGHBORING TENANTS





PRAIRIE CENTER SHOPPING CENTER

135th Street & Quivira Road, Overland Park, Kansas

12010 W. 135th Street Overland Park, KS 66221	1 mi radius	3 mi radius	5 mi radius
Population			
2021 Estimated Population	13,498	100,637	240,695
2026 Projected Population	14,796	104,580	250,203
2020 Census Population	13,654	101,226	237,896
2010 Census Population	10,111	90,064	212,468
Projected Annual Growth 2021 to 2026	1.9%	0.8%	0.8%
Historical Annual Growth 2010 to 2021	3.0%	1.1%	1.2%
2021 Median Age	36.9	35.7	36.8
Households			
2021 Estimated Households	4,912	38,464	92,442
2026 Projected Households	5,562	40,993	98,382
2020 Census Households	4,586	38,120	91,018
2010 Census Households	3,381	33,625	80,832
Projected Annual Growth 2021 to 2026	2.6%	1.3%	1.3%
Historical Annual Growth 2010 to 2021	4.1%	1.3%	1.3%
Race and Ethnicity			
2021 Estimated White	79.7%	76.5%	75.1%
2021 Estimated Black or African American	2.9%	4.4%	4.9%
2021 Estimated Asian or Pacific Islander	9.6%	9.4%	8.1%
2021 Estimated American Indian or Native Alaskan	0.3%	0.3%	0.4%
2021 Estimated Other Races	7.5%	9.4%	11.5%
2021 Estimated Hispanic	4.3%	6.2%	8.6%
Income			
2021 Estimated Average Household Income	\$150,174	\$133,437	\$126,317
2021 Estimated Median Household Income	\$132,982	\$113,469	\$107,253
2021 Estimated Per Capita Income	\$54,673	\$51,032	\$48,593
Education (Age 25+)			
2021 Estimated Elementary (Grade Level 0 to 8)	0.8%	1.3%	1.6%
2021 Estimated Some High School (Grade Level 9 to 11)	1.0%	1.3%	2.1%
2021 Estimated High School Graduate	8.2%	10.7%	12.8%
2021 Estimated Some College	11.4%	14.6%	16.6%
2021 Estimated Associates Degree Only	4.5%	6.8%	7.4%
2021 Estimated Bachelors Degree Only	46.6%	41.0%	37.1%
2021 Estimated Graduate Degree	27.6%	24.2%	22.3%
Business			
2021 Estimated Total Businesses	221	2,729	10,335
2021 Estimated Total Employees	1,633	35,986	171,404
2021 Estimated Employee Population per Business	7.4	13.2	16.6
2021 Estimated Residential Population per Business	61.2	36.9	23.3

©2022, Sites USA, Chandler, Arizona, 480-491-1112 Demographic Source: Applied Geographic Solutions 11/2021, TIGER Geography - RS1

