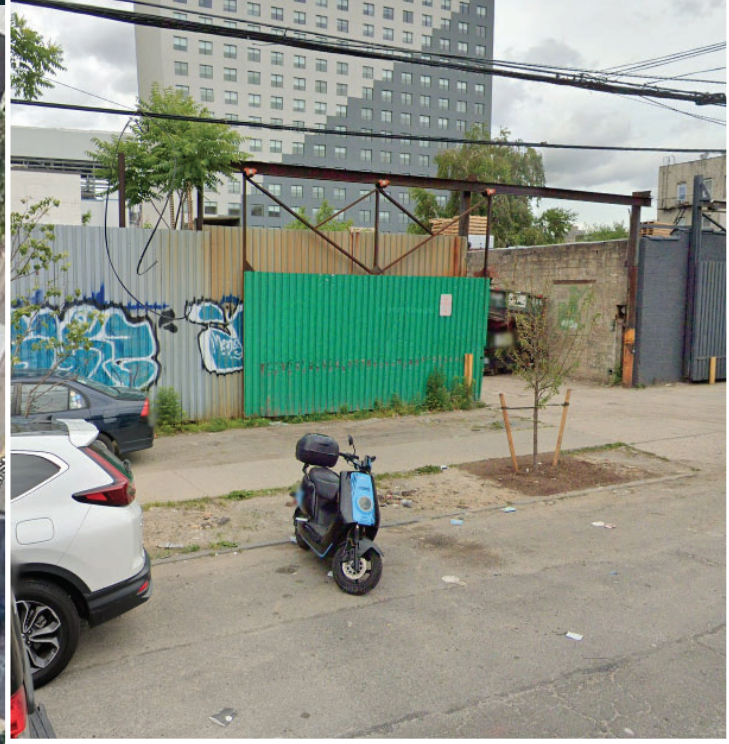


AVAILABLE

7,225 SF INDUSTRIAL YARD AVAILABLE IN LONG ISLAND CITY

37-20 11TH STREET LONG ISLAND CITY, NY 11101






PROPERTY OVERVIEW:

- **SIZE:** 7,225 SF YARD
- **BLOCK:** 360 / **LOT:** 1
- **INDUSTRIAL PROPERTY**
- **ZONING:** M1-3

FEATURES:

- FENCED / PARTIAL PAVED
- DIMENSIONS: 85' X 85'
- POTENTIAL FOR FUTURE EXPANSION
- 24/7 ACCESS
- FLEET PARKING/ CONTRACTOR'S YARD / OUTDOOR STORAGE
- 1 CURB CUT

ACCESS:

- **F** 21ST/QUEENSBRIDGE
-   
- MINUTES FROM QUEENSBORO BRIDGE!

INDUSTRIAL YARD AVAILABLE IN LONG ISLAND CITY



CONTACT EXCLUSIVE AGENTS:

KYLE MALTZ
(718) 786-5050 x218
kmaltz@greiner-maltz.com

GREINER-MALTZ

REAL ESTATE

Creating Opportunities Together

WWW.GREINER-MALTZ.COM

Any information set forth herein has been obtained from sources deemed reliable, however, we have not verified it, and make no representation or warranty of any kind, including without limitation: condition; either latent or patent, size or manner of construction of the property, compliance with local law, and environmental conditions. All information submitted herein is subject to errors and omissions, and the right of our principal(s), to withdraw, modify, or condition the listing with-out prior notice. Broker cooperation encouraged.