

FOR LEASE

Estero Medical Center
10201 Arcos Ave
Estero, FL 33928



COMMERCIAL
PROPERTY
SOUTHWEST FLORIDA



Property Highlights

Address	10201 Arcos Ave
Year Built	2006
Lease Rate	\$22.00 NNN
CAM	\$12.68
Total Bldg. SF	± 42,200 SF
Parking	211 surface spaces
Zoning	CPD - Commercial

Cushman & Wakefield | Commercial Property Southwest Florida is pleased to present this two-story 42,200-square-foot (SF) medical building that sits on approximately 4.15 acres in the Estero submarket of Lee County. The building is located on a corner lot of Arcos Ave. and offers north and south entrances, with a covered entrance, ample parking and sufficient waiting area space.

Gary Tasman
CEO & Principal Broker
+1 239 489 3600
gtasman@cpswfl.com



Vanessa Tyler
Associate Director
+1 239 489 3600
vtyler@cpswfl.com



5220 Summerlin Commons Blvd, Suite 500
Fort Myers, FL 33907
239 489 3600

www.cpswfl.com

FOR LEASE

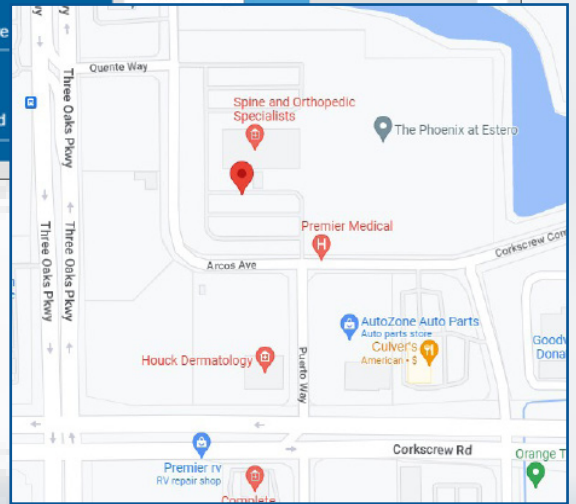
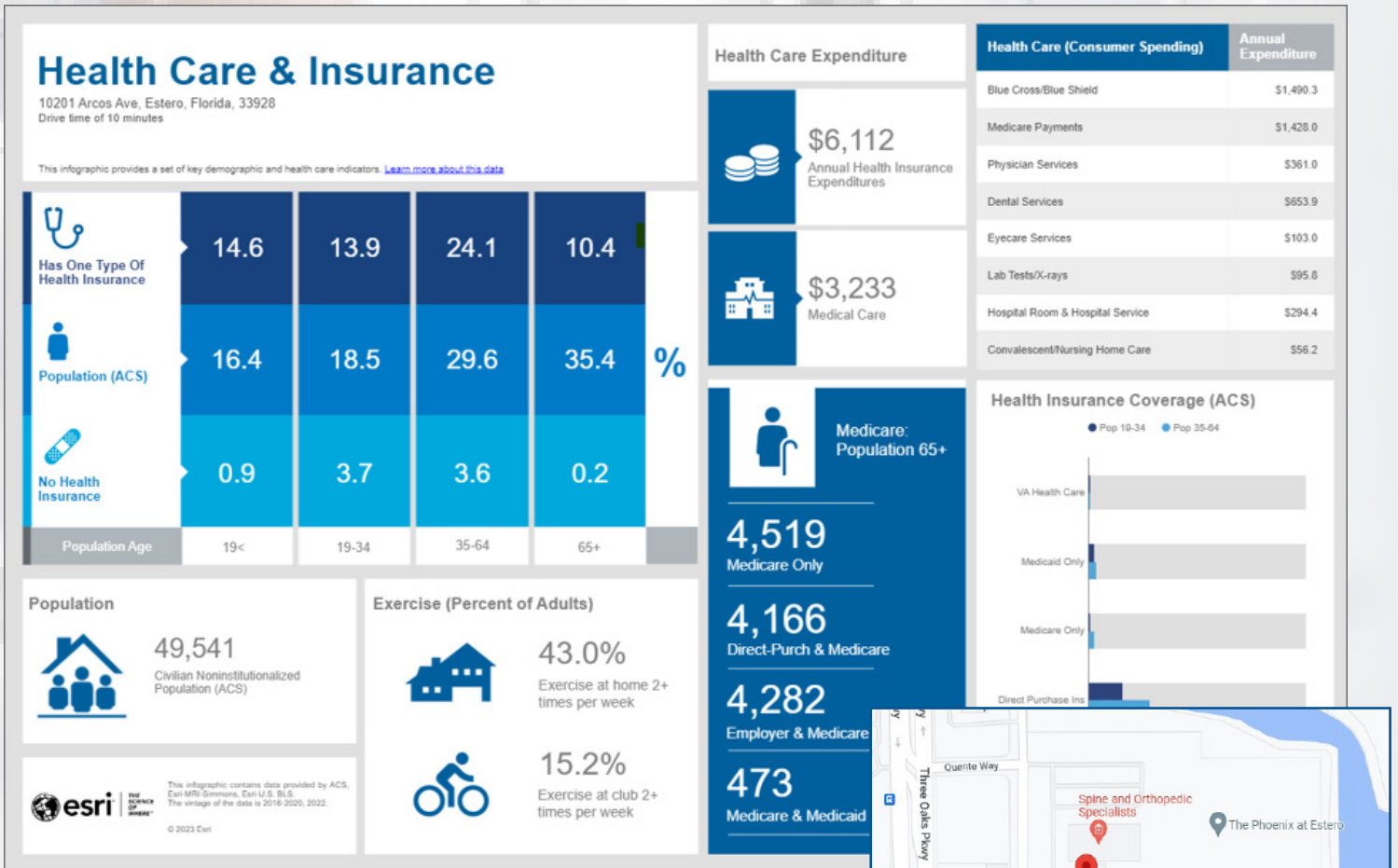
10201 Arcos Ave

Estero, FL 33928



COMMERCIAL
PROPERTY
SOUTHWEST FLORIDA

Healthcare Demographics *Within 10-Minute Drive Time



Gary Tasman
CEO & Principal Broker
+1 239 489 3600
gtasman@cpswfl.com



Vanessa Tyler
Associate Director
+1 239 489 3600
vtyler@cpswfl.com



5220 Summerlin Commons Blvd, Suite 500
Fort Myers, FL 33907
239 489 3600

www.cpswfl.com

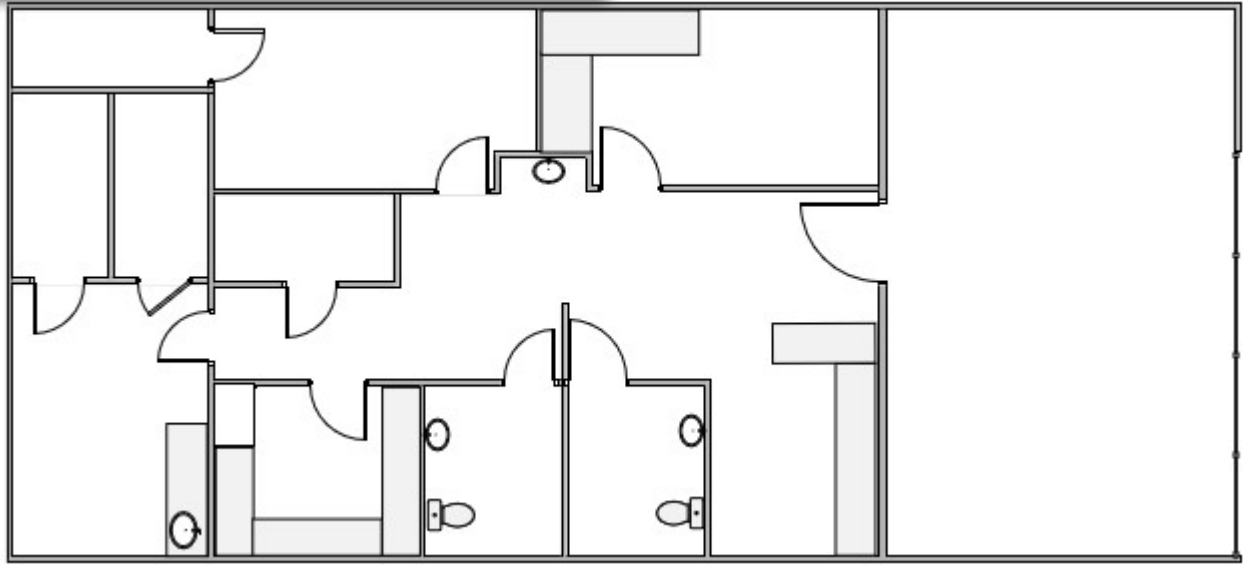
FOR LEASE

10201 Arcos Ave

Estero, FL 33928



COMMERCIAL
PROPERTY
SOUTHWEST FLORIDA



Unit	Size (SF)	Lease Rate	CAM (PSF)	Monthly Total <small>*tax not included</small>
104	1,721 SF	\$22.00 NNN	\$12.68	\$4,973.69



Gary Tasman
CEO & Principal Broker
+1 239 489 3600
gtasman@cpswfl.com



Vanessa Tyler
Associate Director
+1 239 489 3600
vtyler@cpswfl.com



5220 Summerlin Commons Blvd. Suite 500
Fort Myers, FL 33907
239 489 3600
www.cpswfl.com

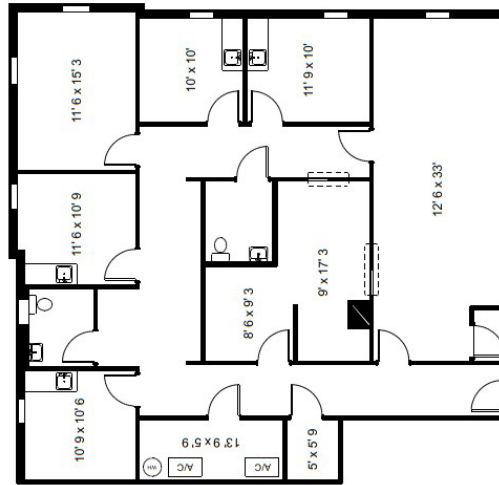
FOR LEASE

10201 Arcos Ave

Estero, FL 33928



COMMERCIAL
PROPERTY
SOUTHWEST FLORIDA



Unit	Size (SF)	Lease Rate	CAM (PSF)	Monthly Total <small>*tax not included</small>
202	2,082 SF	\$22.00 NNN	\$12.68	\$6,016.98

*Available 5/1/2024



Gary Tasman
CEO & Principal Broker
+1 239 489 3600
gtasman@cpswfl.com



Vanessa Tyler
Associate Director
+1 239 489 3600
vtyler@cpswfl.com



5220 Summerlin Commons Blvd. Suite 500
Fort Myers, FL 33907
239 489 3600
www.cpswfl.com