

# FOR LEASE



## Property Highlights:

- Amazing downtown Concord location
- Former Welch's headquarters
- Professionally managed
- Reserved parking in rear
- Adjacent to municipal lot
- Handicap accessible with elevator

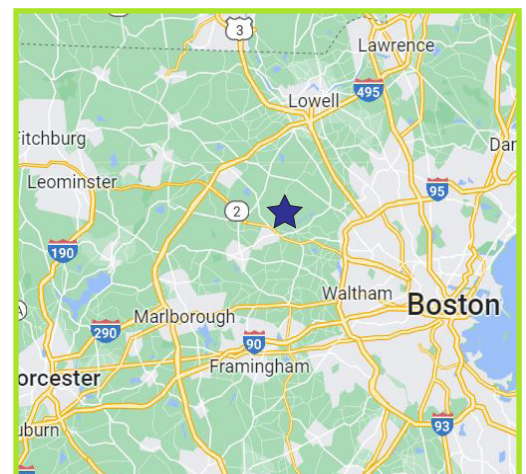
## OFFICE SPACE IN THE HEART OF CONCORD, MA

### Available Spaces:

- 1st floor - single offices
- 2nd floor - 1,525 SF\*
- 2nd floor - 2,792 SF\*
- 4th floor - 1,150 SF\*\*
- 4th floor - 2,680 SF\*\*

\*Can be combined to lease entire 2nd floor

\*\*4th floor spaces can be combined for 3,830 SF



### Contact:

Tyler Spring 617.834.8602  
George Robb 857.891.7254

Tspring@omniproperties.com  
Grobb@omniproperties.com

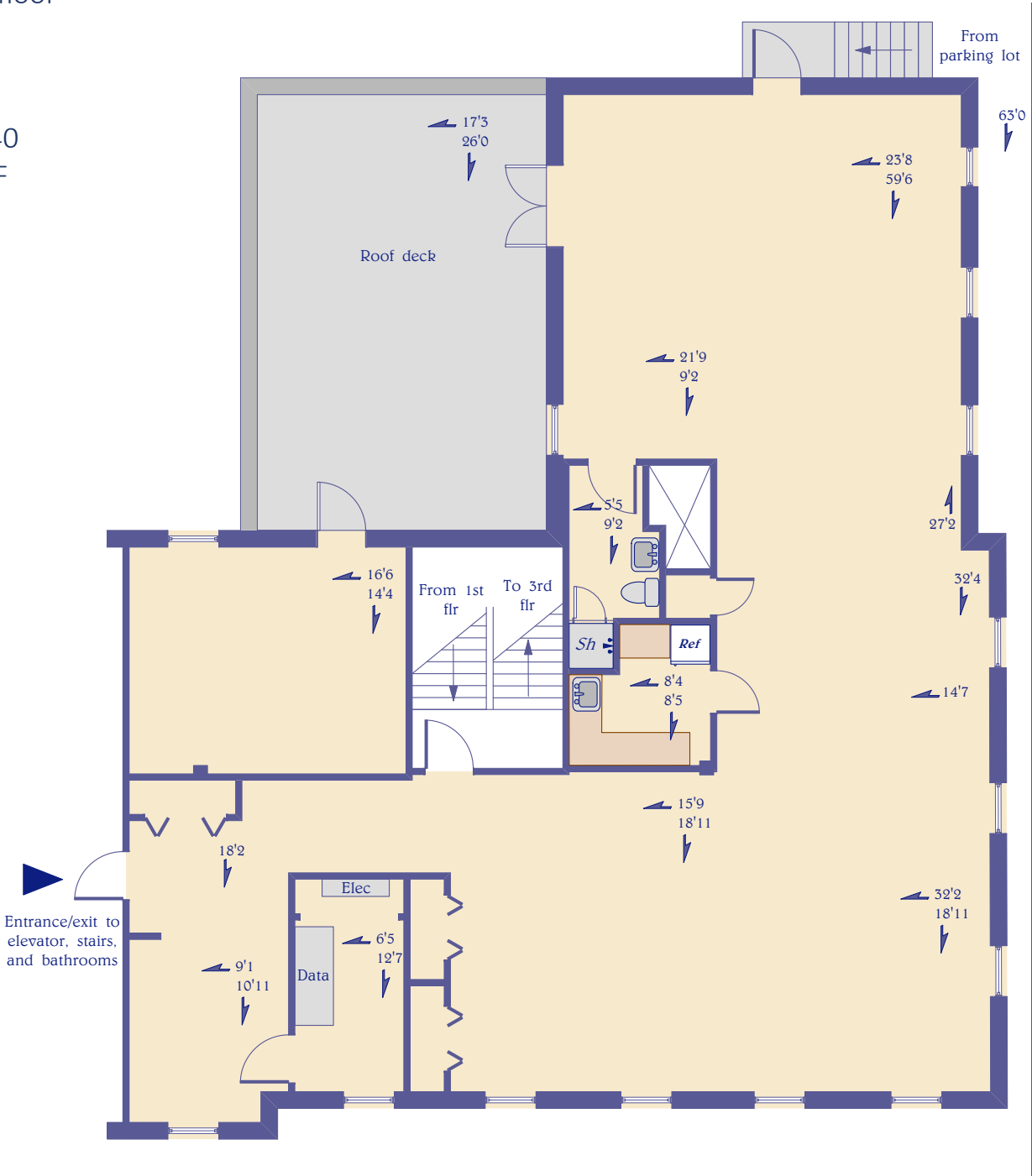


OMNI PROPERTIES  
6 Lyberty Way, Westford MA 01886

# 100 Main Street, Concord MA

2nd floor

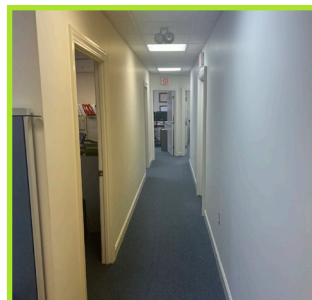
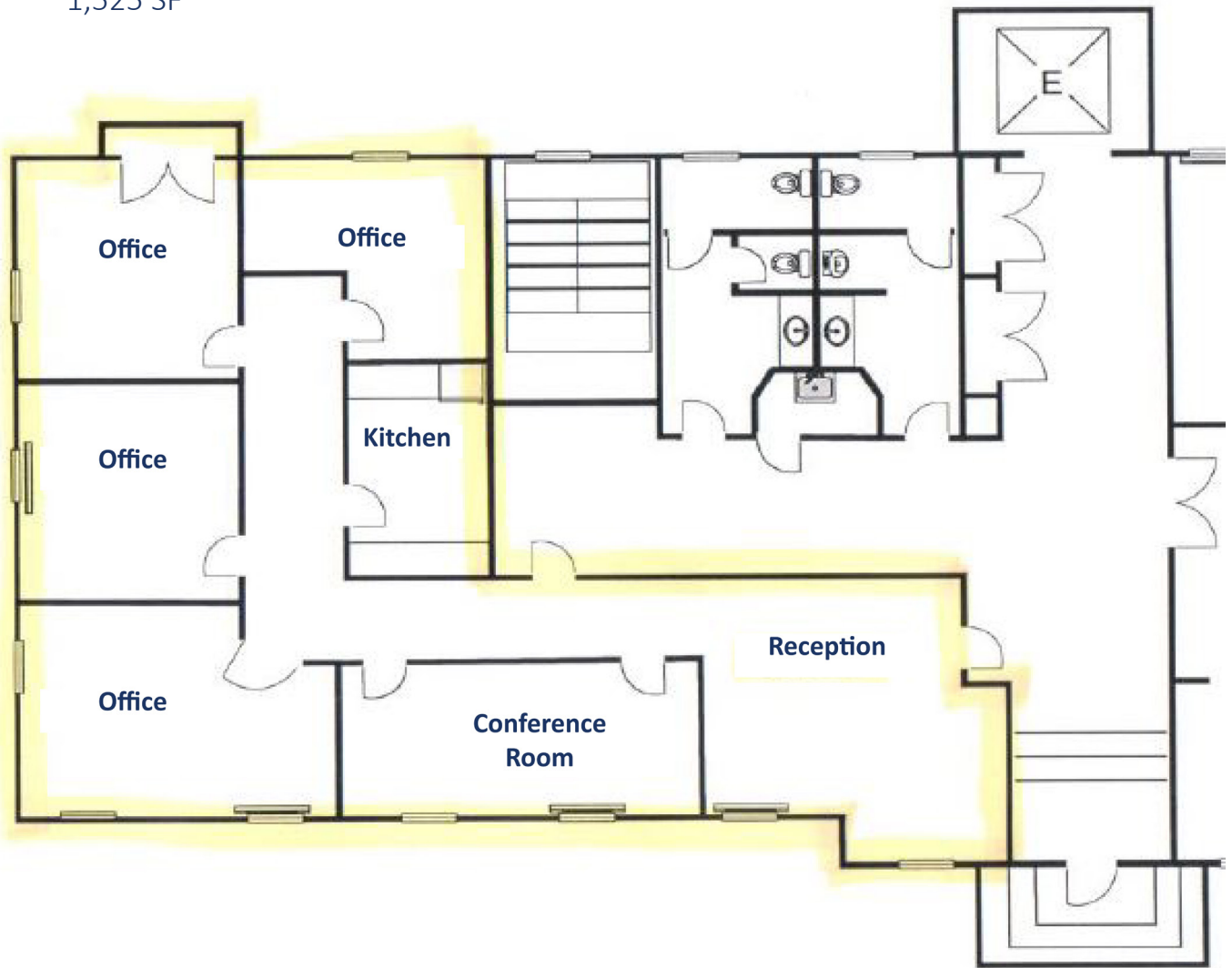
Suite 240  
2,792 SF



# 100 Main Street, Concord MA

2nd floor

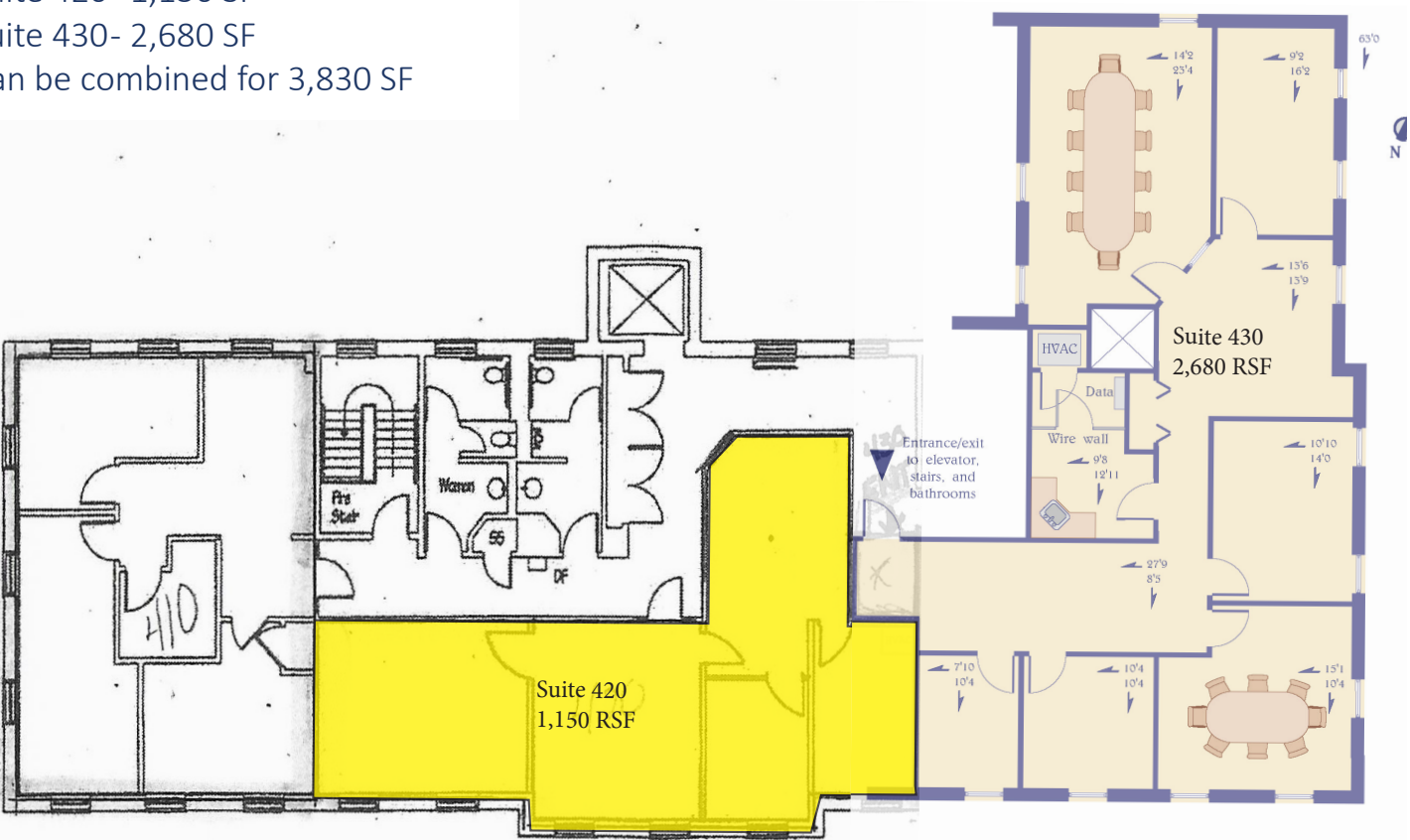
Suite 210  
1,525 SF





4th floor

Suite 420- 1,150 SF  
Suite 430- 2,680 SF  
Can be combined for 3,830 SF



1st floor  
Single offices

\$725/Month (includes utilities)

