



For Lease



1097 Weston Dr.
Mt. Juliet, TN 37122

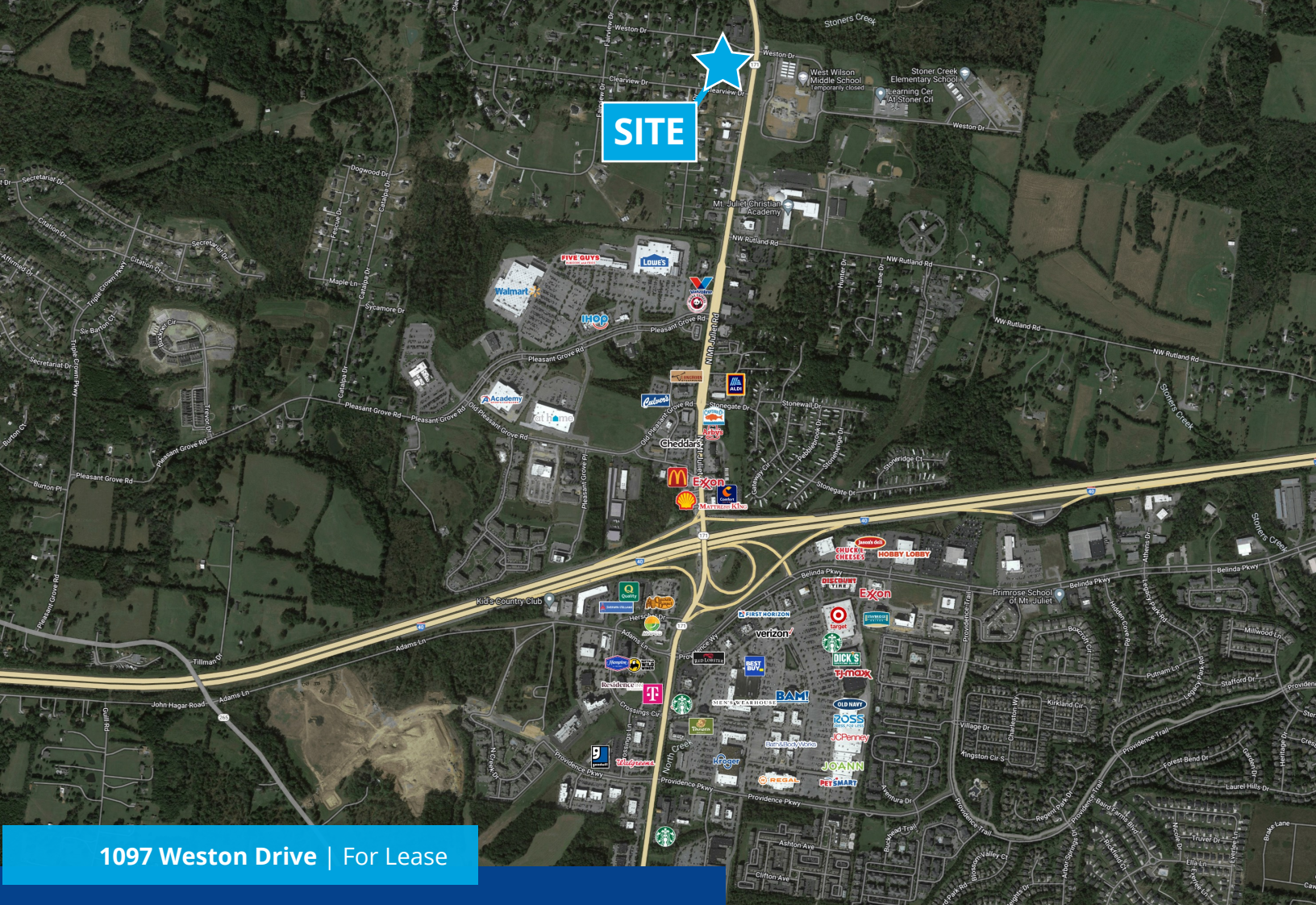
Rent Per Square Foot:

\$22.00 NNN

1,000 SF Available

- Office or retail space for lease
- Mt Juliet Pharmacy Space, 1,000 SF - Available
- Located in one of the fastest-growing cities in Tennessee
- 3-minutes from Interstate 40 (84,731 VPD)
- Close proximity to Nashville

Accelerating success.



1097 Weston Drive | For Lease

Area Overview

MT. JULIET

The 1097 Weston Drive office building is located in Wilson County, one of the fastest growing counties in Tennessee. In 2018, the estimated population in Wilson County was 140,625 residents. Between 2010 to 2018, the area experienced a 23.4% population increase. As of 2020, there are currently 148,795 individuals living in the area. Just 17 miles east of downtown Nashville, Mt. Juliet is located between two major national east-west routes, Interstate 40 and U.S. Route 70.

Colliers International | Nashville
 615 3rd Avenue South | Suite 500
 Nashville, Tennessee 37210
 P: +1 615 850 2700



1097 Weston Drive | For Lease

Property Profile



2022 Population

75,282



Interstate 40

84,731 VPD (21)



2022-2027 Population Growth

2.3%



N Mount Juliet Road

31,345 VPD (21)



2022 Total Households

28,506



Old Lebanon Dirt Road

4,811 VPD (21)



2022 Average Household Income

\$103,462

Contact us:

Radley Hendrixson, CCIM

Senior Vice President

+1 615 850 2745

radley.hendrixson@colliers.com

Sohaila Willis, CCIM

Vice President

+1 615 850 2757

sohaila.willis@colliers.com

Rosson Hendrixson

Associate

+1 615 850 2770

rosson.hendrixson@colliers.com

Colliers