

580 CRESPI DR STE O, PACIFICA

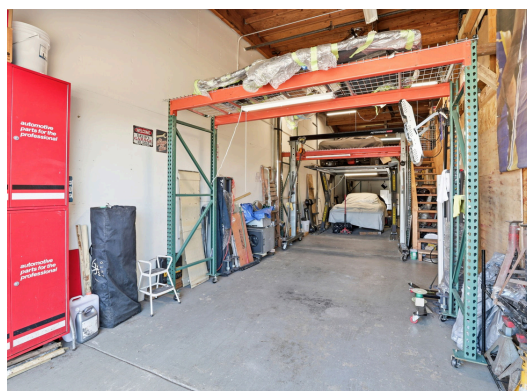


1,440 SQ FT

OFFERED AT \$780,000

ABOUT THE PROPERTY

Welcome to a versatile commercial opportunity in the heart of the coastal community of Pacifica. Located at 580 Crespi Drive, Ste O, this 1,440 sq. ft. unit is ideal for warehouse, light industrial, or administrative operations. A large office and workspace area greets you immediately upon entry, providing functional space for administrative tasks or production support. The unit also features a ground-level roll-up door, allowing easy access for deliveries and equipment. A second-level mezzanine offers additional storage, maximizing the units usable space. Zoned for commercial/industrial purposes, the property supports a variety of business activities and provides convenient access to Highway 1, Linda Mar Shopping Center, and surrounding residential neighborhoods. This unit presents an excellent opportunity for owner-operators or investors seeking a well-located warehouse asset in a desirable coastal market.



Eric Chu, Realtor
DRE 02039805

Top 1.5% of Realtors Nationwide
RealTrends Verified

650-922-7449

eric@keyluxestates.com

keyluxestates.com



The information contained herein has been obtained from third party sources deemed reliable but its accuracy is not guaranteed. Christie's International Real Estate Sereno has not and will not verify the information and assumes no responsibility for its accuracy. Buyer should verify and investigate all information to Buyer's satisfaction. If your home is currently listed with another agent, please disregard this marketing material.