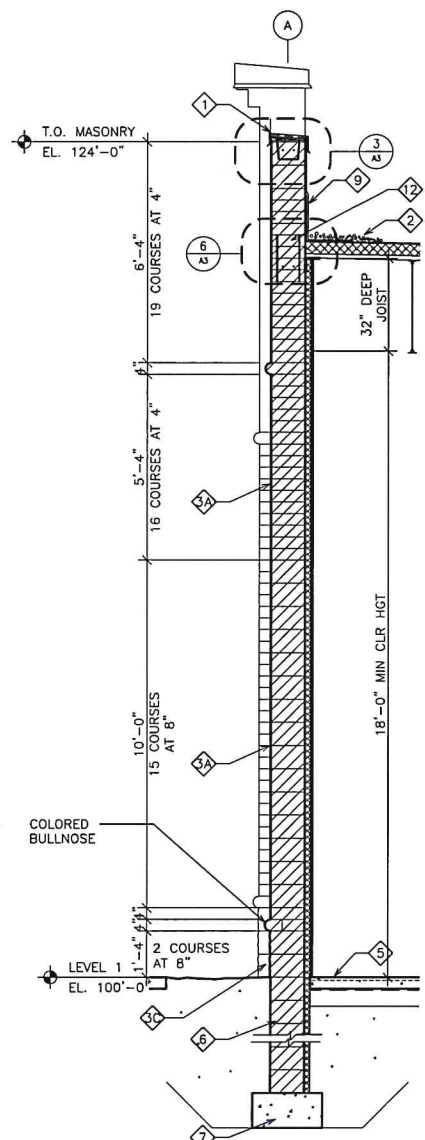
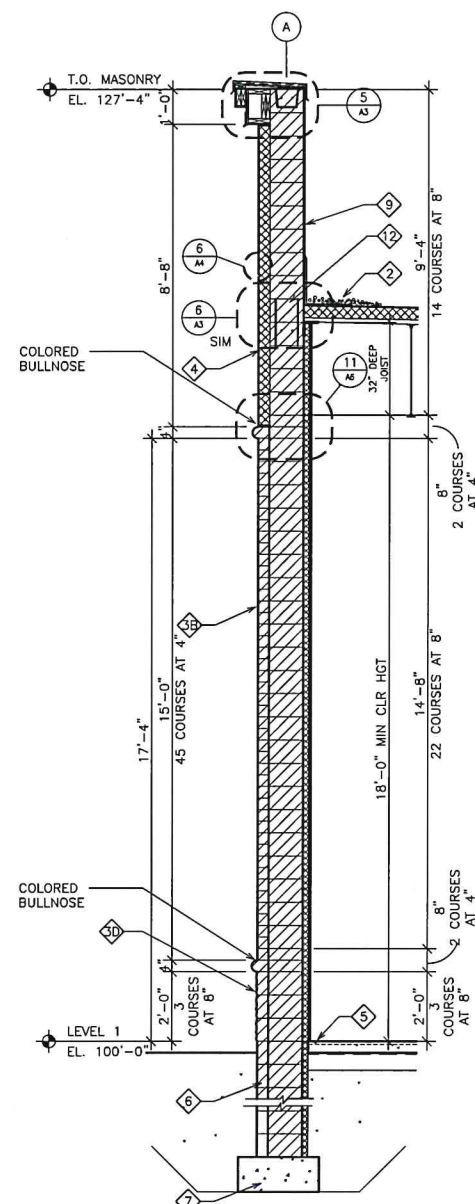


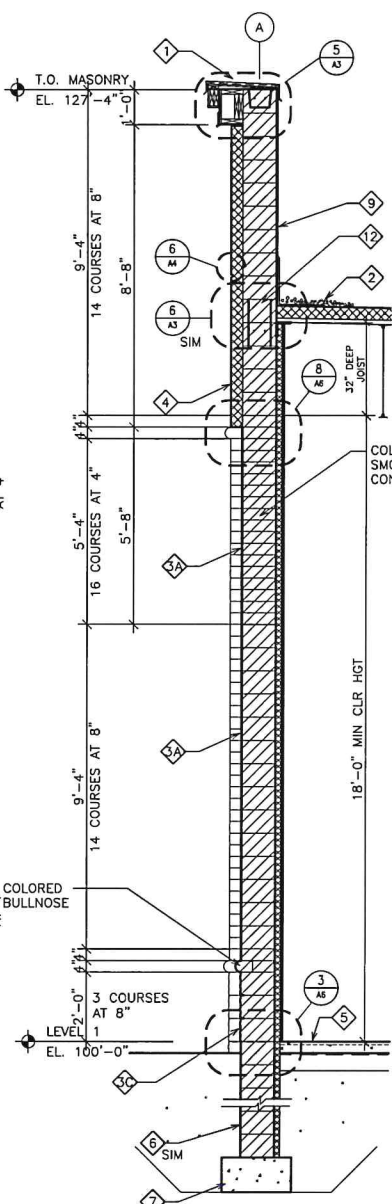
1 WALL SECTION  
AS.1 NORTH ELEVATION 3/8" = 1'-0"



2 WALL SECTION  
AS.1 NORTH ELEVATION 3/8" = 1'-0"



3 WALL SECTION  
AS.1 NORTH ELEVATION 3/8" = 1'-0"



4 WALL SECTION  
AS.1 NORTH ELEVATION 3/8" = 1'-0"

KEY NOTES SHEETS A5 & A5.1

- 1 PARAPET COPING:
  - a. PREFIN METAL FASCIA
  - b. PREFIN MTL HOOK STRIP
  - c. WRAP ROOF MEMBRANE FLASHING OVER PARAPET
  - d. 2X TREATED WOOD BLOCKING - SLOPE AS INDICATED
- 2 ROOF CONSTRUCTION:
  - a. BALLASTED 60 MIL REINFORCED EPDM ROOF MEMBRANE; WITH FACTORY APPLIED SEAM TAPE - INSTALL PER MFR'S INSTRUCTIONS
  - b. 1/2" HIGH DENSITY PROTECTION BOARD
  - c. 4" MINIMUM POLYISOCYANURATE INSULATION - TAPERED INSULATION AS NECESSARY
  - d. METAL DECK - SEE STRUCTURAL
  - e. BAR JOISTS - SEE STRUCTURAL
- 3A WALL CONSTRUCTION (MASS WALL):
  - a. 12" COLORED ARCHITECTURAL CONCRETE MASONRY UNITS
  - b. CONCRETE BLOCK TO BE FILLED WITH GRANULAR INSULATION UNLESS OTHERWISE NOTED
  - c. VERTICAL WALL REINFORCING SEE STRUCTURAL DRAWINGS
  - d. HORIZONTAL JOINT REINFORCING 16" O.C. MIN.
  - e. METAL Z-STUDS
  - f. 2" RIGID INSULATION R10 MIN
  - g. 6 MIL POLY V.B.
  - h. 5/8" GYP BOARD
- 3B WALL CONSTRUCTION (MASS WALL):
  - a. 4" VENEER COLORED ARCHITECTURAL CONCRETE MASONRY UNITS (RUNNING BOND)
  - b. 12" CONCRETE BLOCK UNITS
  - c. CONCRETE BLOCK TO BE FILLED WITH GRANULAR INSULATION UNLESS OTHERWISE NOTED
  - d. VERTICAL WALL REINFORCING SEE STRUCTURAL DRAWINGS
  - e. HORIZONTAL JOINT REINFORCING 16" O.C. MIN.
  - f. METAL Z-STUDS
  - g. 2" RIGID INSULATION R10 MIN
  - h. 6 MIL POLY V.B.
  - i. 5/8" GYP BOARD
- 3C WALL CONSTRUCTION (MASS WALL):
  - a. 12" COLORED ROCKFACE CONCRETE BLOCK UNITS
  - b. CONCRETE BLOCK TO BE FILLED WITH GRANULAR INSULATION UNLESS OTHERWISE NOTED
  - c. VERTICAL WALL REINFORCING SEE STRUCTURAL DRAWINGS
  - d. HORIZONTAL JOINT REINFORCING 16" O.C. MIN.
  - e. METAL Z-STUDS
  - f. 2" RIGID INSULATION R10 MIN
  - g. 6 MIL POLY V.B.
  - h. 5/8" GYP BOARD
- 3D WALL CONSTRUCTION (MASS WALL):
  - a. 4" VENEER COLORED ROCKFACE CONCRETE BLOCK UNITS (RUNNING BOND)
  - b. 12" CONCRETE BLOCK UNITS
  - c. CONCRETE BLOCK TO BE FILLED WITH GRANULAR INSULATION UNLESS OTHERWISE NOTED
  - d. VERTICAL WALL REINFORCING SEE STRUCTURAL DRAWINGS
  - e. HORIZONTAL JOINT REINFORCING 16" O.C. MIN.
  - f. METAL Z-STUDS
  - g. 2" RIGID INSULATION R10 MIN
  - h. 6 MIL POLY V.B.
  - i. 5/8" GYP BOARD
- 4 WALL CONSTRUCTION (MASS WALL):
  - a. E.I.F.S. FINISH SYSTEM ON 3" RIGID INSUL ON 12" REINFORCED CONCRETE BLOCK UNITS
  - b. CONCRETE BLOCK TO BE FILLED WITH GRANULAR INSULATION UNLESS OTHERWISE NOTED
  - c. VERTICAL WALL REINFORCING SEE STRUCTURAL DRAWINGS
  - d. HORIZONTAL JOINT REINFORCING 16" O.C. MIN.
  - e. METAL Z-STUDS
  - f. 2" RIGID INSULATION R12 MIN
  - g. 6 MIL POLY V.B.
  - h. 5/8" GYP BOARD
- 5 SLAB ON GRADE:
  - a. FINISHED FLOOR SEE RM FIN SCHD
  - b. 4" CONC SLAB ON GRADE REINF - SEE STRUCTURAL
  - c. VAPOR BARRIER
  - d. MIN 6" SAND FILL - COMPACTED
  - e. GRANULAR FILL - COMPACTED
- 6 FOUNDATION WALL:
  - a. DAMPPROOFING
  - b. 12" CONC BLK FOUNDATION WALLS SEE STRUCTURAL
  - c. 2" RIGID INSULATION TO TOP OF SLAB R10 MIN
- 7 CONCRETE FOOTING:
  - a. REINFORCED CONCRETE FOOTING SEE STRUCTURAL
- 8 1" INSULATED GLAZING IN THERMALLY BROKEN PREFIN ALUM FRAME
- 9 PARAPET WALL CONSTRUCTION:
  - a. 12" COLORED CONCRETE BLOCK UNITS
  - b. SAME AS KEY NOTE 3 ABOVE
  - c. SAME AS KEY NOTE 3 ABOVE
  - d. SAME AS KEY NOTE 3 ABOVE
- 10 1/2" BUILDING EXPANSION JOINT ROD STOCK & SEALANT EACH SIDE
- 11 FUTURE CANOPY BY OWNER
- 12 BOND BEAM VERIFY SIZE, REINF., AND LOCATION - SEE STRUC

NOT FOR CONSTRUCTION

14711 MARTIN DRIVE  
BUILDING  
GROOTWASSINK REAL ESTATE  
EDEN PRAIRIE, MINNESOTA

---

ARCHITECTURE ■ LANDSCAPE DESIGN ■ SPACE PLANNING

**JA ARCHITECTS**

4440 LYING BROOK DR. SUITE 202 EDEN PRAIRIE, MINNESOTA 55424

---

CONSTRUCTION: THIS PLAN, SPECIFICATION, OR REPORT WAS PREPARED BY ME OR UNDER MY CLOSE PERSONAL SUPERVISION AND I AM A LICENSED ARCHITECT UNDER THE LAWS OF THE STATE OF MINNESOTA.

JACK EDWARD ANDERSON  
DATE: 06/02/2013 REG. NO. 13722

---

**WALL SECTIONS**

---

DATE: 06/03/13

REVISIONS:  
A 7/15/2013

SCALE: AS INDICATED

DRAWN: FL

CHECKED: JEA

PROJECT NO.: 1148A

SHEET NO.:

A5.1