

NEW ESFR SPRINKLERS!



18,371 SF AVAILABLE FOR LEASE

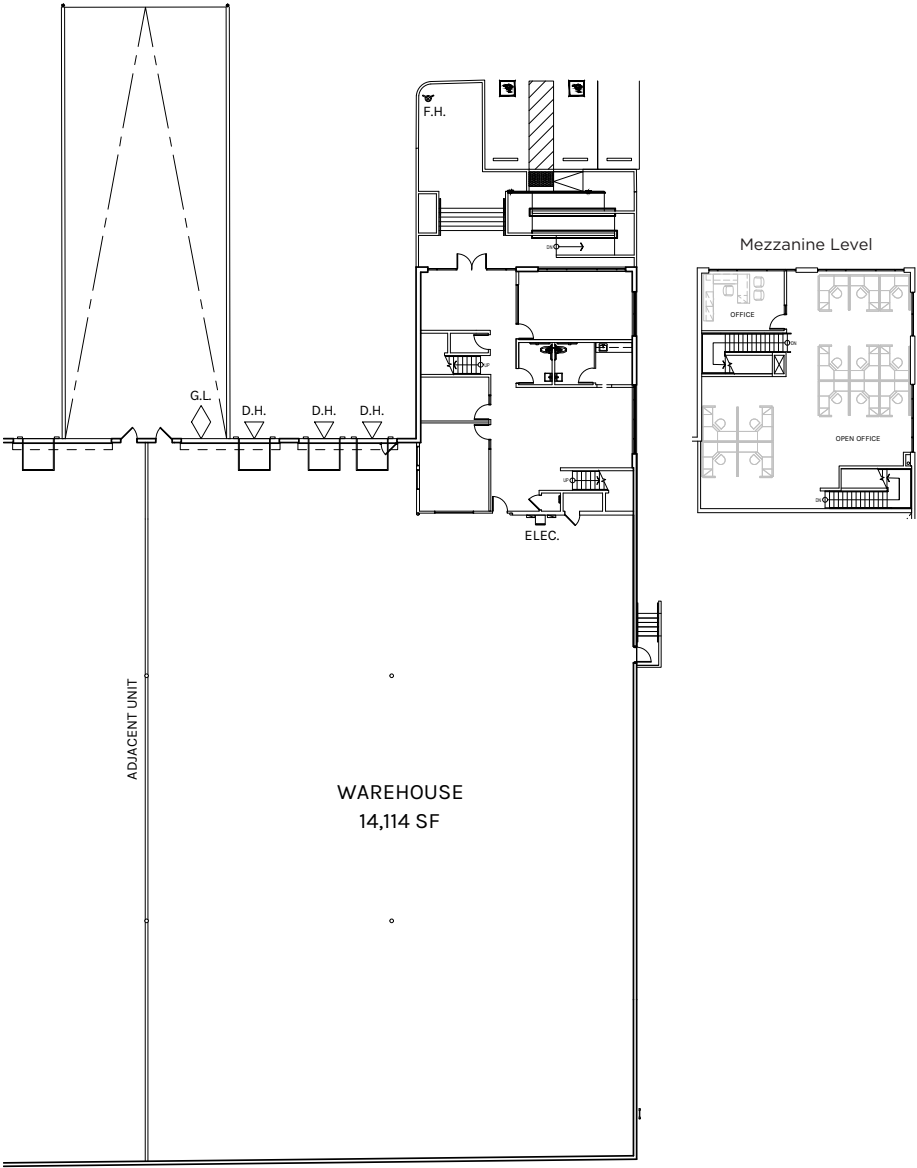
CLASS A DOCK HIGH WAREHOUSE DISTRIBUTION FACILITY

20910 S Normandie Ave, Unit D | Unincorporated LA County (Torrance P.O.), CA



WAREHOUSE DISTRIBUTION FACILITY

- 18,371 Dock High Industrial Unit
- 4,257 SF of Highly Functional Two-Story Office
- 3 Dock High Positions
1 Ground Level Via Ramp
- 28' Clearance
- ESFR Sprinklers
- 200 Amps Power
- Excellent Access to (405) & (110) Freeways
- Strategically Located Between LAX and Ports of LA/Long Beach



WAREHOUSE
14,114 SF

OFFICE
4,257 SF

TOTAL
18,371 SF

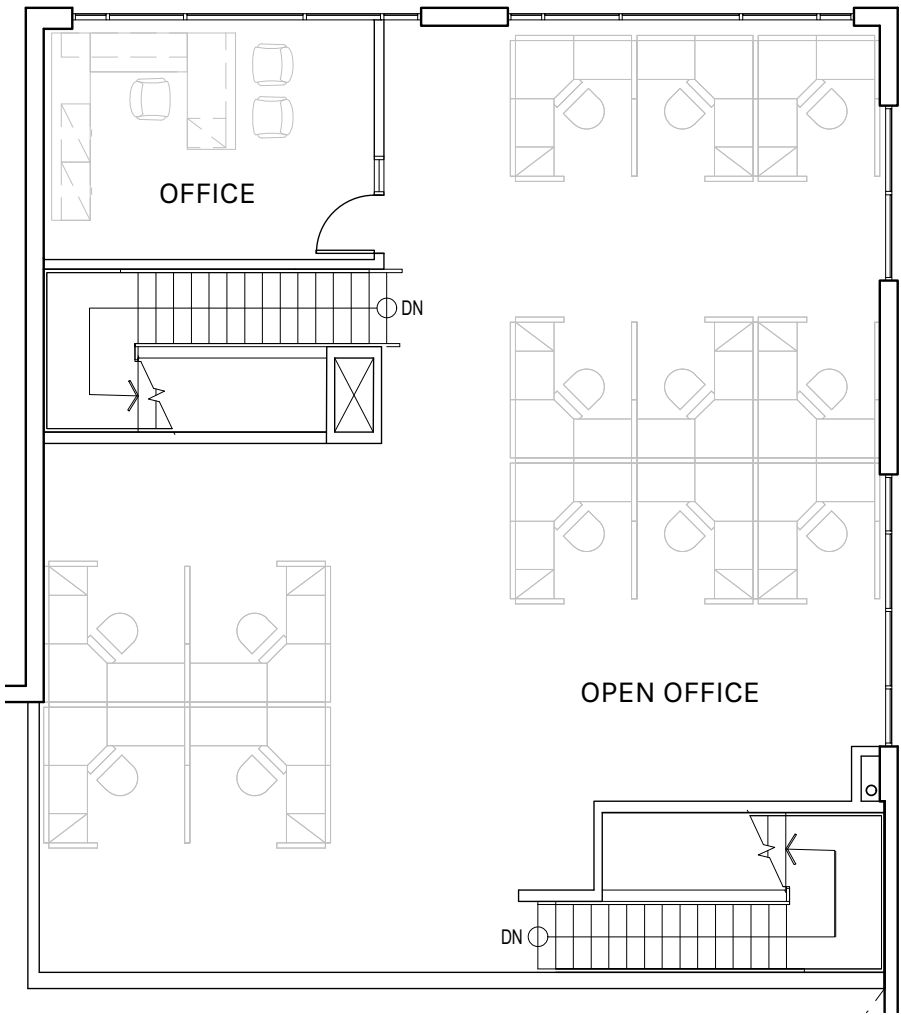
PLAN LAYOUT SUBJECT TO FIELD CONDITIONS AND MAY DIFFER FROM PLAN AS SHOWN. ALL INFORMATION PRESENTED ON THIS DRAWING IS PRESUMED TO BE ACCURATE, HOWEVER TENANT SHOULD VERIFY PERTINENT INFORMATION PRIOR TO COMMITTING TO A LEASE. ANY FURNITURE OR APPLIANCES SHOWN ON PLAN ARE FOR CONCEPT ONLY AND WILL BE TENANT PROVIDED.

Office Floor Plan

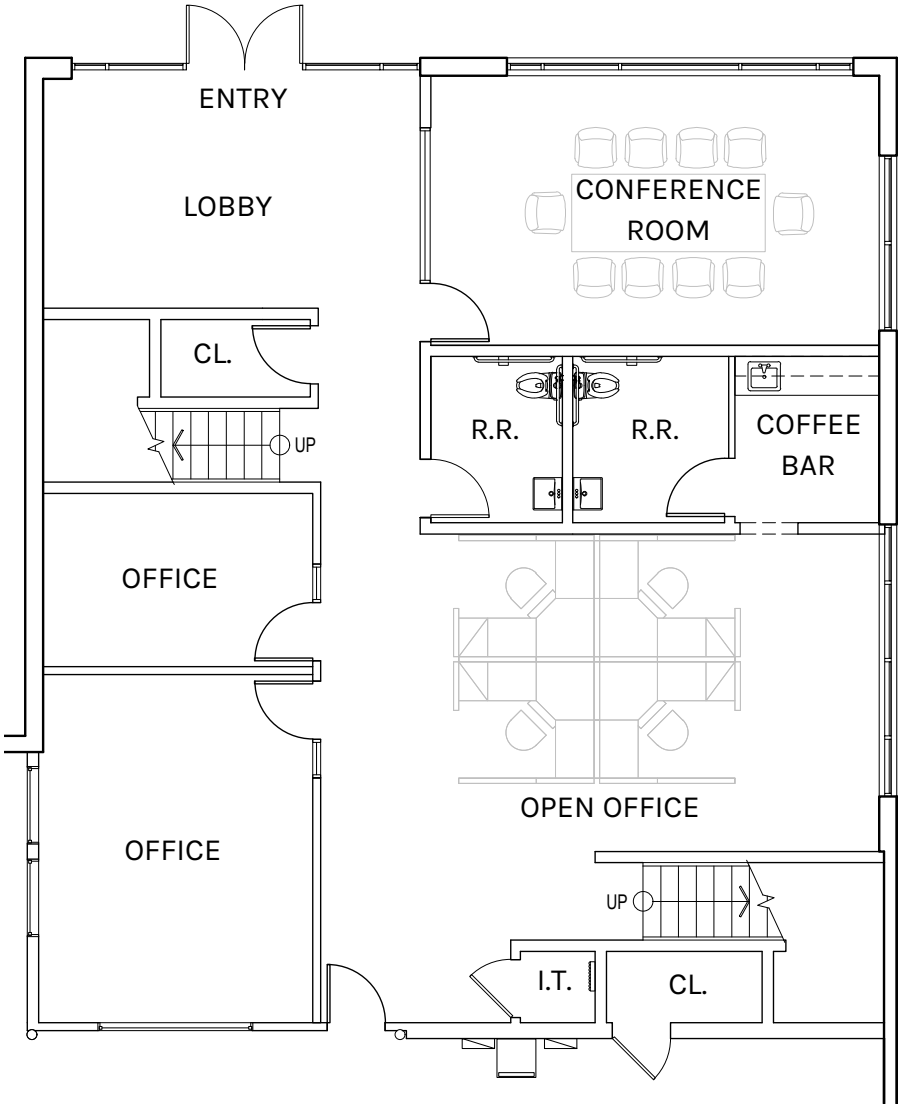
20910 S NORMANDIE AVENUE, UNIT D



Mezzanine Level



Ground Level



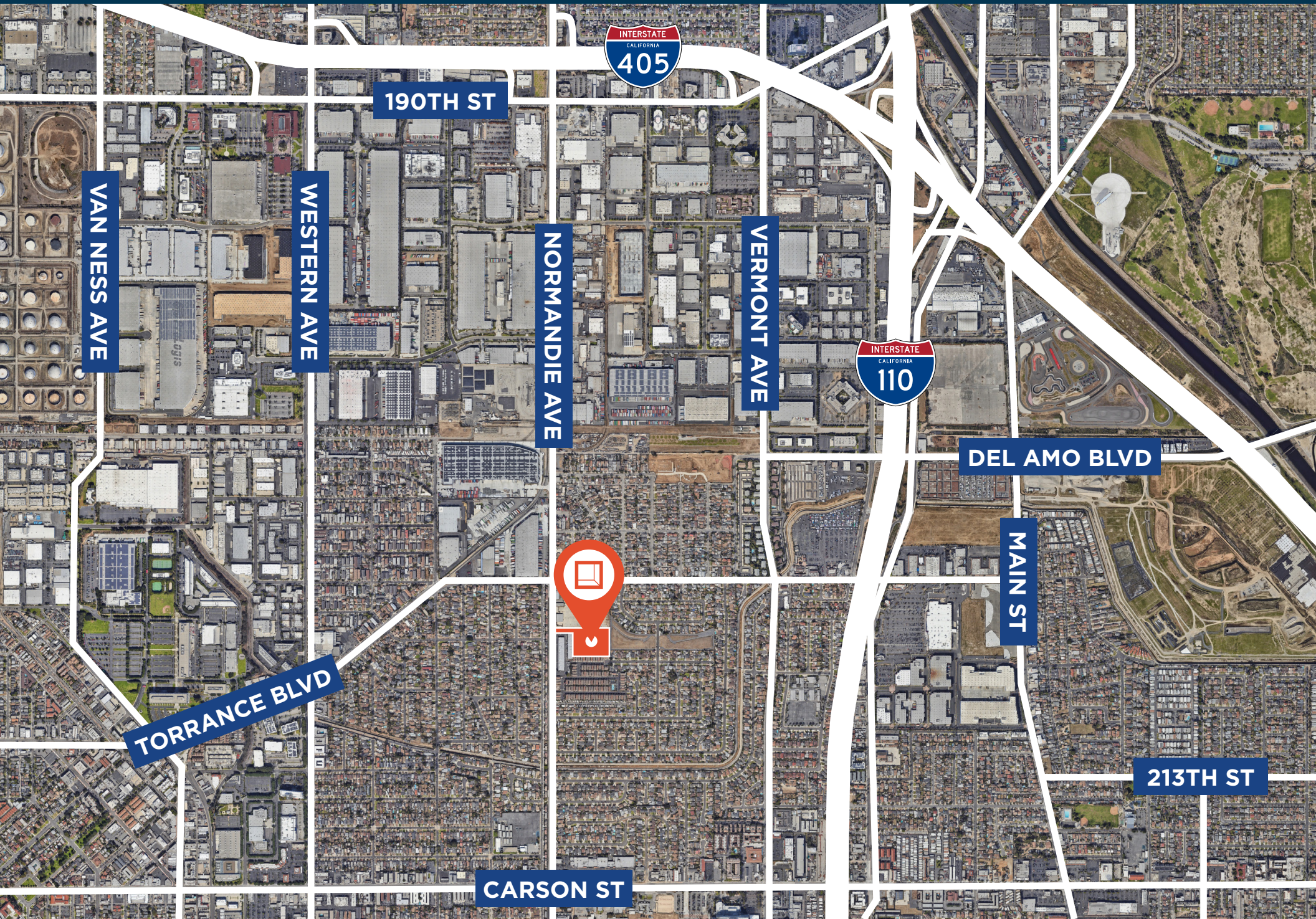
GROUND FLOOR
2,212 SF

MEZZANINE
2,045 SF

TOTAL
4,257 SF

PLAN LAYOUT SUBJECT TO FIELD CONDITIONS AND MAY DIFFER FROM PLAN AS SHOWN. ALL INFORMATION PRESENTED ON THIS DRAWING IS PRESUMED TO BE ACCURATE, HOWEVER TENANT SHOULD VERIFY PERTINENT INFORMATION PRIOR TO COMMITTING TO A LEASE. ANY FURNITURE OR APPLIANCES SHOWN ON PLAN ARE FOR CONCEPT ONLY AND WILL BE TENANT PROVIDED.

20910 S NORMANDIE AVENUE, UNIT D



190TH ST

VAN NESS AVE

WESTERN AVE

NORMANDIE AVE

VERMONT AVE

DEL AMO BLVD

MAIN ST

213TH ST

CARSON ST

TORRANCE BLVD



Location

20910 S NORMANDIE AVENUE, UNIT D





**Rexford
Industrial**

Corporate License #01355491

performing acts for which a real estate license is required. The information contained herein has been
s but has not been verified and no guarantee, warranty or representation, either express or implied, is
information. Terms of sale or lease and availability are subject to change or withdrawal without notice.

Leasing Contacts

DANNY WILLIAMS

Executive Managing Director

t 310-491-2061

danny.williams@nmrk.com

CA RE Lic. #01776416

JOHN MCMILLAN

Vice Chairman

t 310-491-2048

john.mcmillan@nmrk.com

CA RE Lic. #01103292

BARRY HILL

Executive Managing Director

t 310-491-2026

barry.hill@nmrk.com

CA RE Lic. #01250531

NEWMARK

Newmark

2301 Rosecrans Ave

Suite 4100

El Segundo, CA 90245

t 310-491-2000

nmrk.com

Corporate License #01355491

The distributor of this communication is performing acts for which a real estate license is required. The information contained herein has been obtained from sources deemed reliable but has not been verified and no guarantee, warranty or representation, either express or implied, is made with respect to such information. Terms of sale or lease and availability are subject to change or withdrawal without notice.