

# 60 CUTTERMILL RD



## CONTEMPORARY OFFICE SPACE AVAILABLE FOR LEASE

Nestled in a prime location, presents an exemplary embodiment of sophisticated office environments. This distinguished office edifice, renowned for its architectural elegance, offers unparalleled amenities and strategic advantages for discerning professionals.

**Elegant Modernity:** Discover the unparalleled offerings of our recently renovated building, boasting a modern lobby illuminated with LED lighting and state-of-the-art bathrooms. Embrace the outdoors with our newest addition—an inviting outdoor lounge, ideal for meetings or relaxation breaks."

**Convenient Accessibility:** Situated in close proximity to the Long Island Rail Road (LIRR) station, just a quick 20-minute commute to Manhattan, our location offers unmatched accessibility. Surrounded by numerous dining options, cafes, banks, and accessible public transportation, commuting is convenient. Ample parking, available on both ground and subterranean levels within our parking garage, further streamlines the experience for tenants and visitors alike.



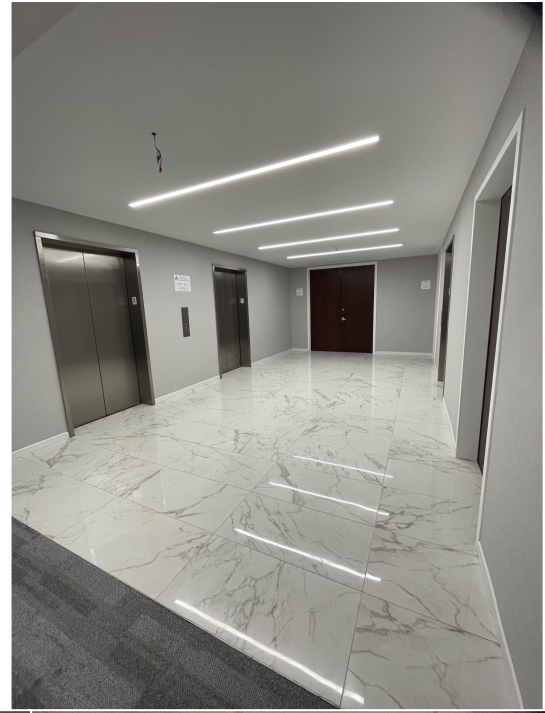
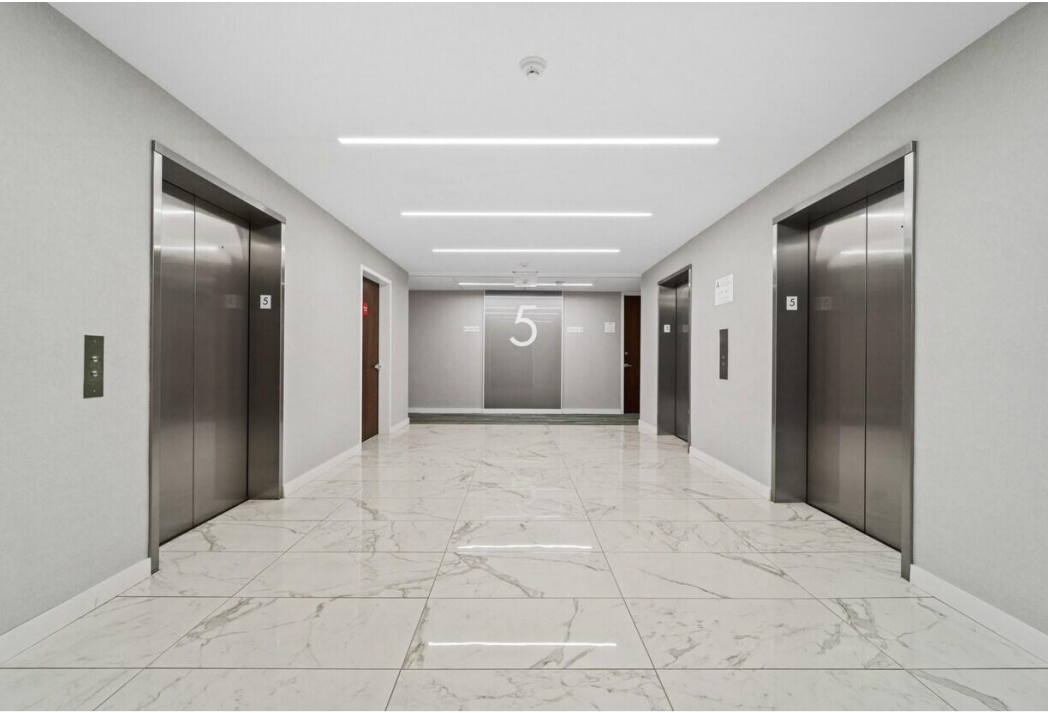
**ROZITA SOOMEKH**  
Licensed Real Estate Broker

[Rozita.Soomekh@elliman.com](mailto:Rozita.Soomekh@elliman.com)

**516.205.2279**



# RECENTLY RENOVATED COMMON CORRIDORS AND LAVATORIES



 Douglas Elliman

 THE  
ROZITA  
SOOMEKH  
TEAM  
at Douglas Elliman  
Real Estate

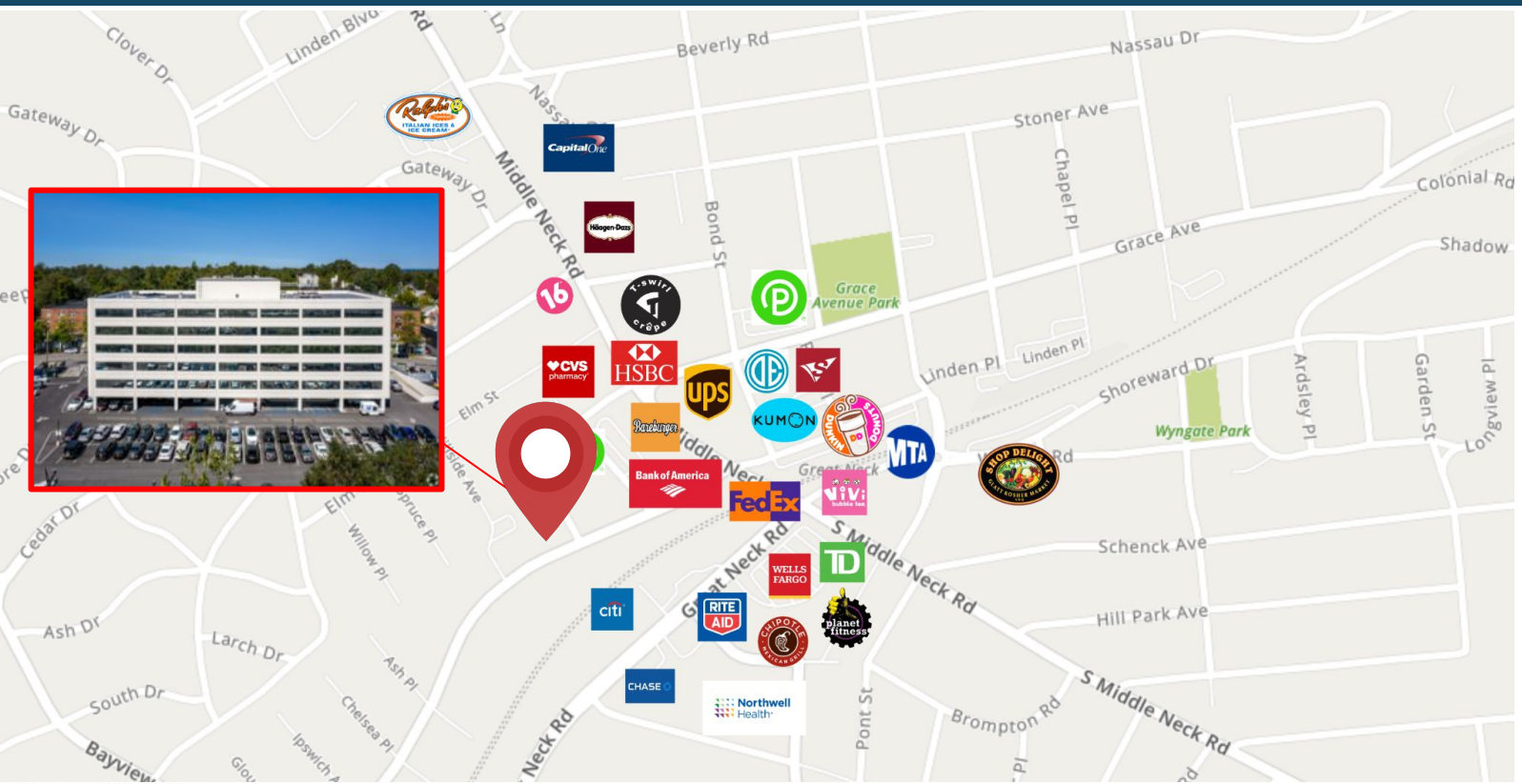
**ROZITA SOOMEKH**

Licensed Real Estate Broker

[Rozita.Soomekh@elliman.com](mailto:Rozita.Soomekh@elliman.com)

**516.205.2279**





OTHER NOTABLE BUSINESSES IN THE AREA



**Available :**  
**June 1, 2025**

**SUITE 611**  
**Approx 6,540 SF**

**+ 3.75/SF for UTS**  
**\$ 21,255.00/Mo**

**Available :**  
**June 1, 2025**

**SUITE 611 A**  
**Approx 3,605 SF**

**+ 3.75/SF for UTS**  
**\$ 11,716.25/Mo**

**Available :**  
**June 1, 2025**

**SUITE 611 B**  
**Approx 2,935 SF**

**+ 3.75/SF for UTS**  
**\$ 9,538.75/Mo**

Available June 1, 2025

# SUITE 611

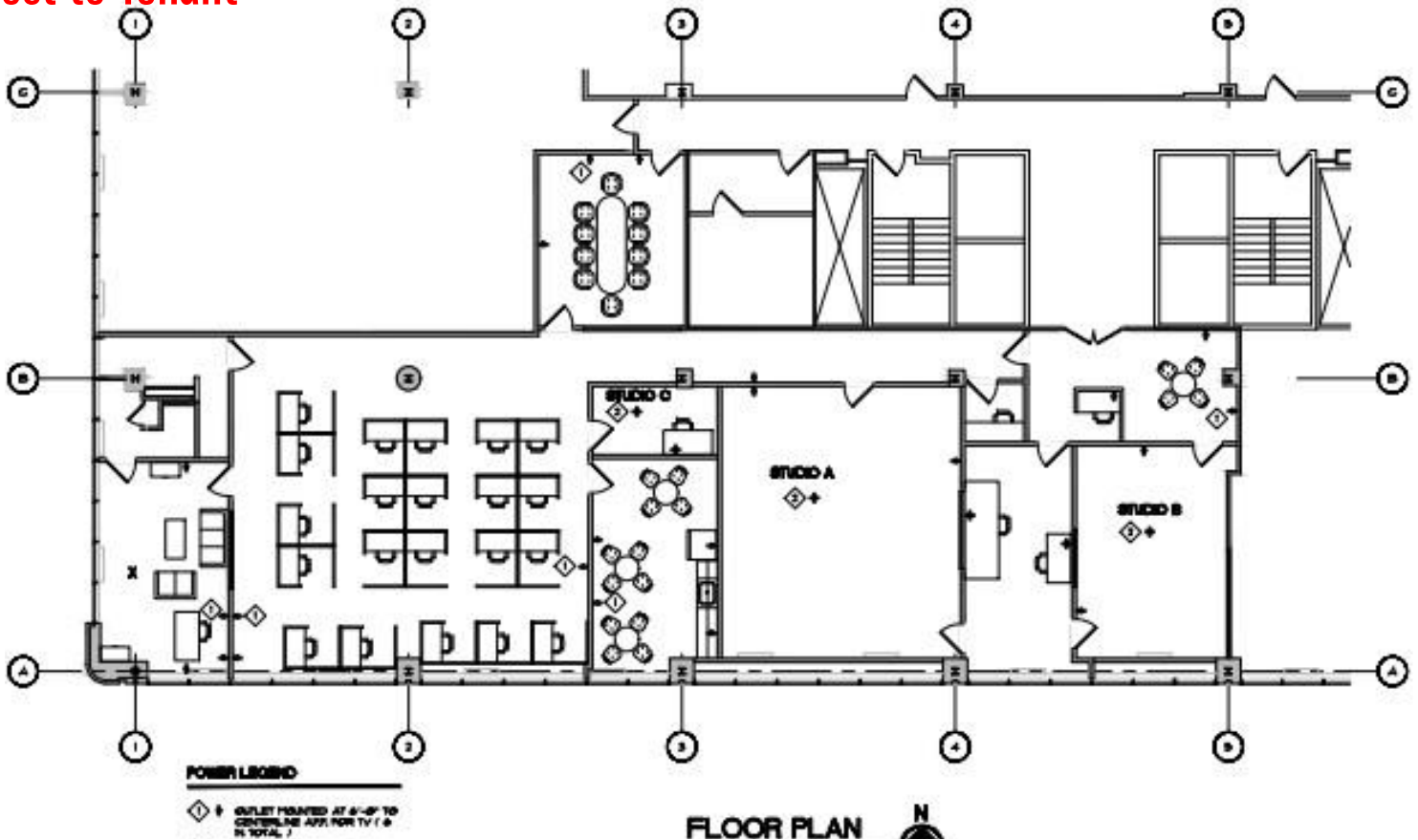
\$ 39/SF + 3.75/SF for UTS

## 6,540 RSF

**\$21,255.00/Mo**  
+ 3.75/SF for UTS

**\*\*Landlord  
Offering a Fully  
Customized  
Buildout at No  
Cost to Tenant**

Two (2) Soundproof Studios-Rest of Space is Office.  
Top Floor of Building with Big Skylight.



DouglasElliman

THE  
ROZITA  
SOOMEKH  
TEAM  
at Douglas Elliman  
Real Estate

## ROZITA SOOMEKH

Licensed Real Estate Broker

Rozita.Soomekh@elliman.com

516.205.2279



# SUITE 611



 Douglas Elliman

 THE  
ROZITA  
SOOMEKH  
TEAM  
at Douglas Elliman  
Real Estate

**ROZITA SOOMEKH**

Licensed Real Estate Broker

[Rozita.Soomekh@elliman.com](mailto:Rozita.Soomekh@elliman.com)

**516.205.2279**

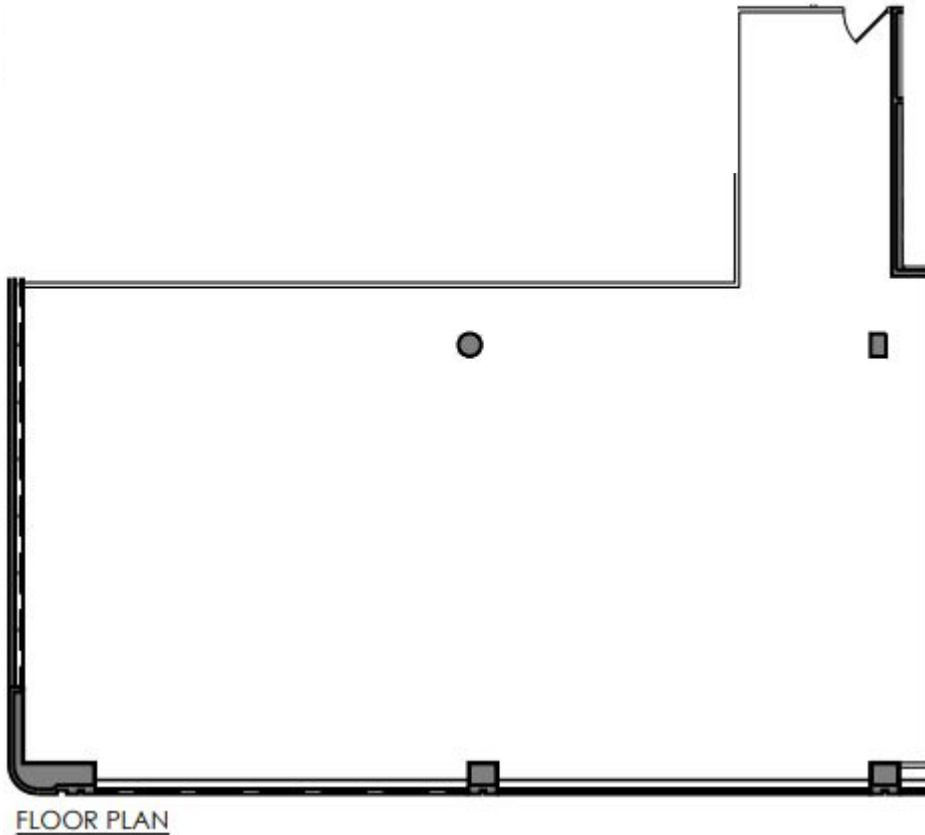


Available June 1, 2025

**SUITE 611 A**  
\$ 39/SF + 3.75/SF for UTS  
**3,605 RSF**

**\$ 11,716.25/Mo**  
+ 3.75/SF for UTS

**\*\*Landlord  
Offering a Fully  
Customized  
Buildout at No  
Cost to Tenant**



 Douglas Elliman

 THE  
ROZITA  
SOOMEKH  
TEAM  
at Douglas Elliman  
Real Estate

**ROZITA SOOMEKH**

Licensed Real Estate Broker

[Rozita.Soomekh@elliman.com](mailto:Rozita.Soomekh@elliman.com)

**516.205.2279**

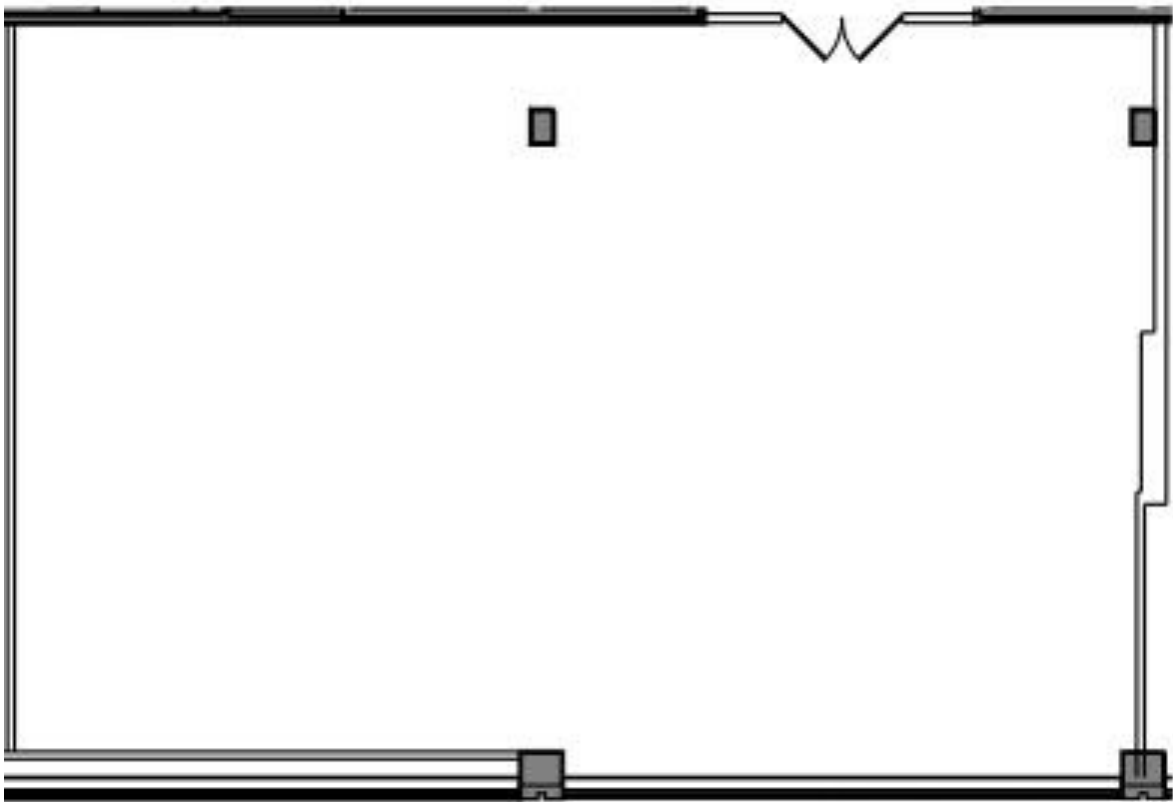


Available June 1, 2025

**\*\*Landlord  
Offering a Fully  
Customized  
Buildout at No  
Cost to Tenant**

**SUITE 611 B**  
\$ 39/SF + 3.75/SF for UTS  
**2,935 RSF**

**\$ 9,538.75 /Mo**  
+ 3.75/SF for UTS



ONE ADF

 Douglas Elliman

 THE  
**ROZITA  
SOOMEKH**  
TEAM at Douglas Elliman  
Real Estate

**ROZITA SOOMEKH**

Licensed Real Estate Broker

[Rozita.Soomekh@elliman.com](mailto:Rozita.Soomekh@elliman.com)

**516.205.2279**



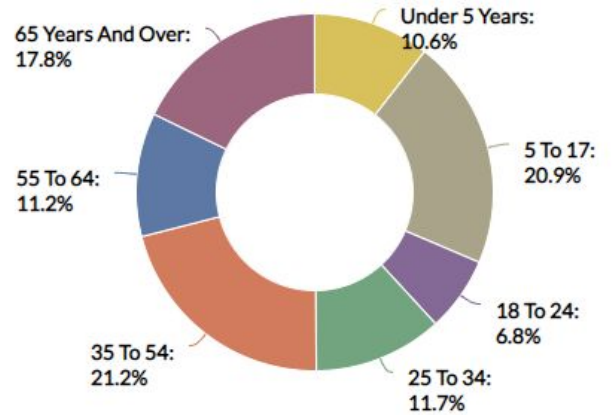
# GREAT NECK

NEW YORK



Great Neck is a region on Long Island, New York, that covers a peninsula on the North Shore and includes 9 villages, such as the villages of Great Neck, Great Neck Estates, Great Neck Plaza, Kings Point, and Russell Gardens, and a number of unincorporated areas, as well as an area south of the peninsula near Lake Success and the border territory of Queens.

## Age Demographic



TOTAL POPULATION

±11,000

## MEDIAN HOUSEHOLD INCOME



SCAN TO VIEW  
ALL OUR LISTINGS

