

FOR SALE AND LEASE

4000-4024 PRECISION DRIVE

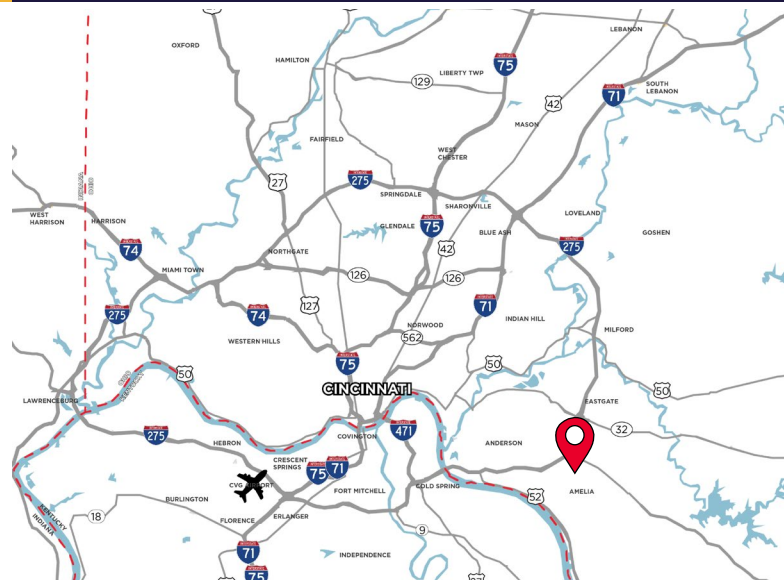
UNION TOWNSHIP, OH 45245



LEASE RATE: NEGOTIABLE + \$1.60/SF OPEX

SALE PRICE: UNDISCLOSED

- 75,000 SF Available
- Smallest Division 50,000 SF - 75,000 SF
- 556 SF Office
- 27' Clear Height
- (15) Dock Doors; Cross-Dock
- (1) 12'x14' Drive-in Door
- LED Lighting



For more information, contact:

SEATTLE STEIN
+1 513 763 3027
seattle.stein@cushwake.com

JEFF BENDER, SIOR, CCIM
+1 513 763 3046
jeff.bender@cushwake.com



201 E. Fourth Street, Suite 1800
Cincinnati, OH 45202
P: +1 513 421 4884
cushmanwakefield.com

FOR SALE AND LEASE

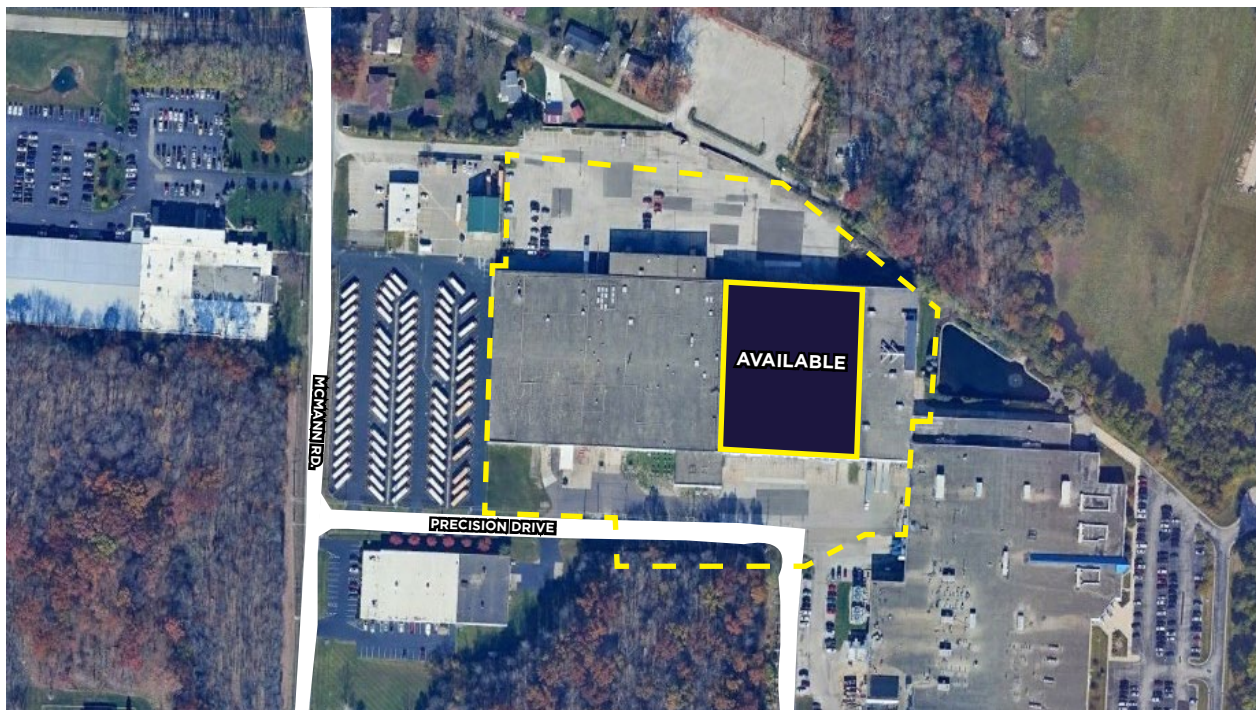
4000-4024 PRECISION DRIVE

UNION TOWNSHIP, OH 45245



JURISDICTION	Union Township	DOCK DOORS	(15) Dock Doors; Cross-Dock
AVAILABLE SIZE	75,000 SF	DRIVE-IN DOORS	(1) 12'x14' Drive-in Door
OFFICE SIZE	556 SF	HVAC	Natural Gas
YEAR BUILT	1985, 1995	UTILITIES	
ACRES	10 Acres	ELECTRIC	www.owenelectric.com
ZONING	M-1 Union Township	GAS	www.duke-energy.com
CLEAR HEIGHT	27'	WATER	www.sd1.org
PARKING	30+	SEWER	www.sd1.org
FIRE SUPPRESSION	Wet System	TELEPHONE	www.atafiber.com
ELECTRIC (VACANCY)	800-amp, 120/208-volt	DATA	www.spectrum.com
LIGHTING	LED	OPEX	\$1.60/SF

AERIAL



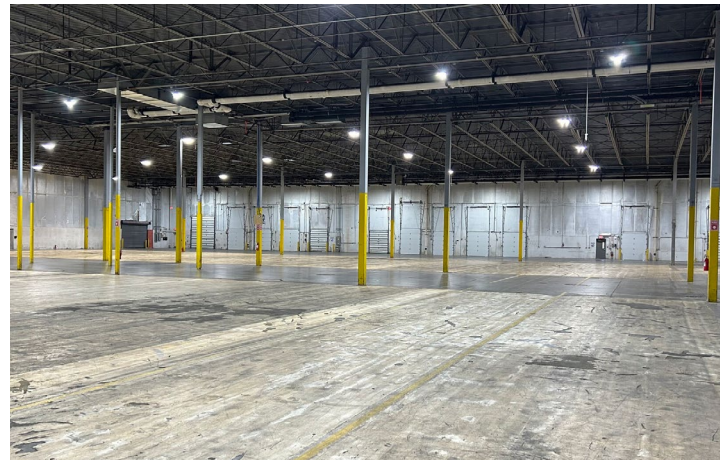
FOR SALE AND LEASE

4000-4024 PRECISION DRIVE

UNION TOWNSHIP, OH 45245



PHOTOS



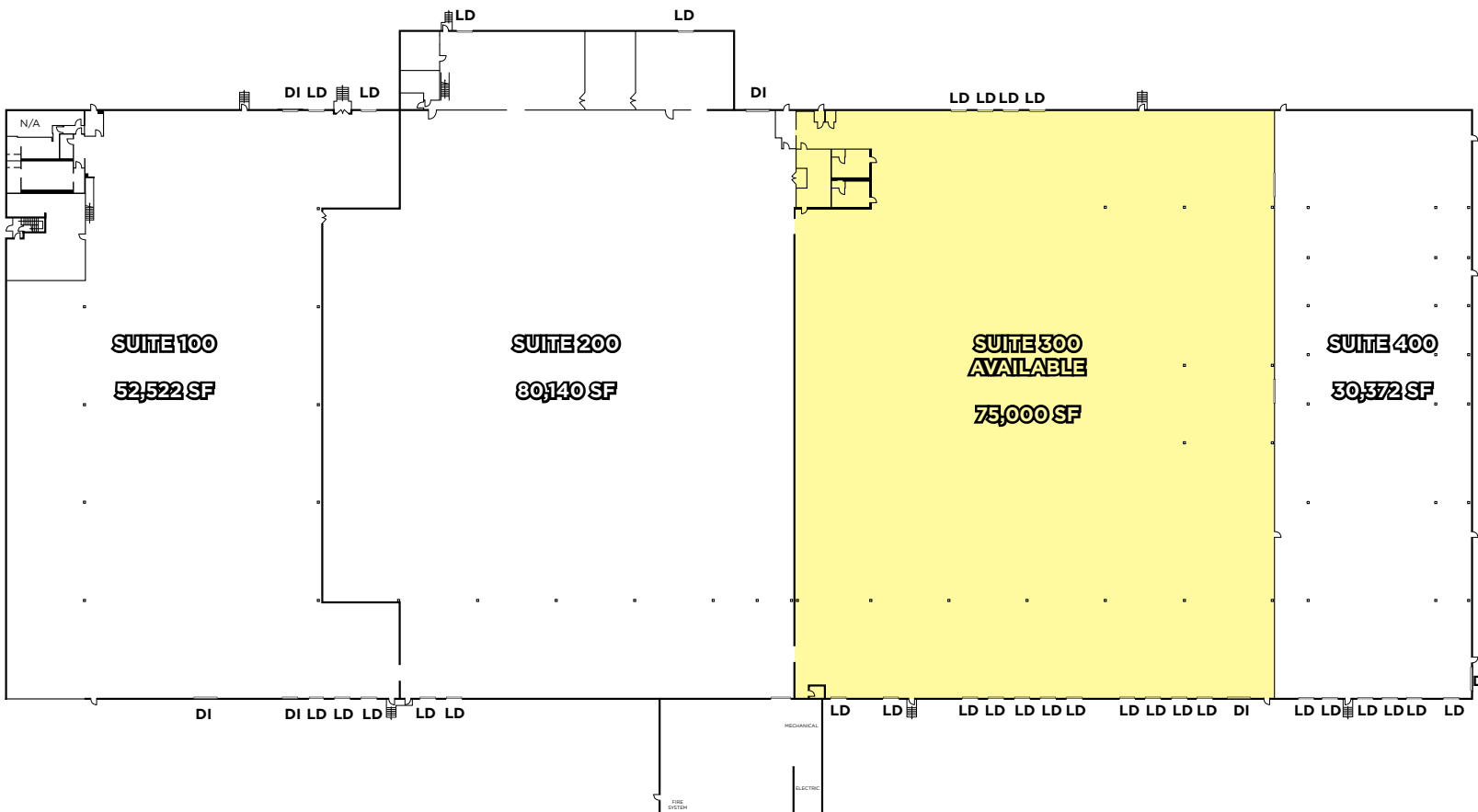
FOR SALE AND LEASE

4000-4024 PRECISION DRIVE

UNION TOWNSHIP, OH 45245



FLOOR PLAN



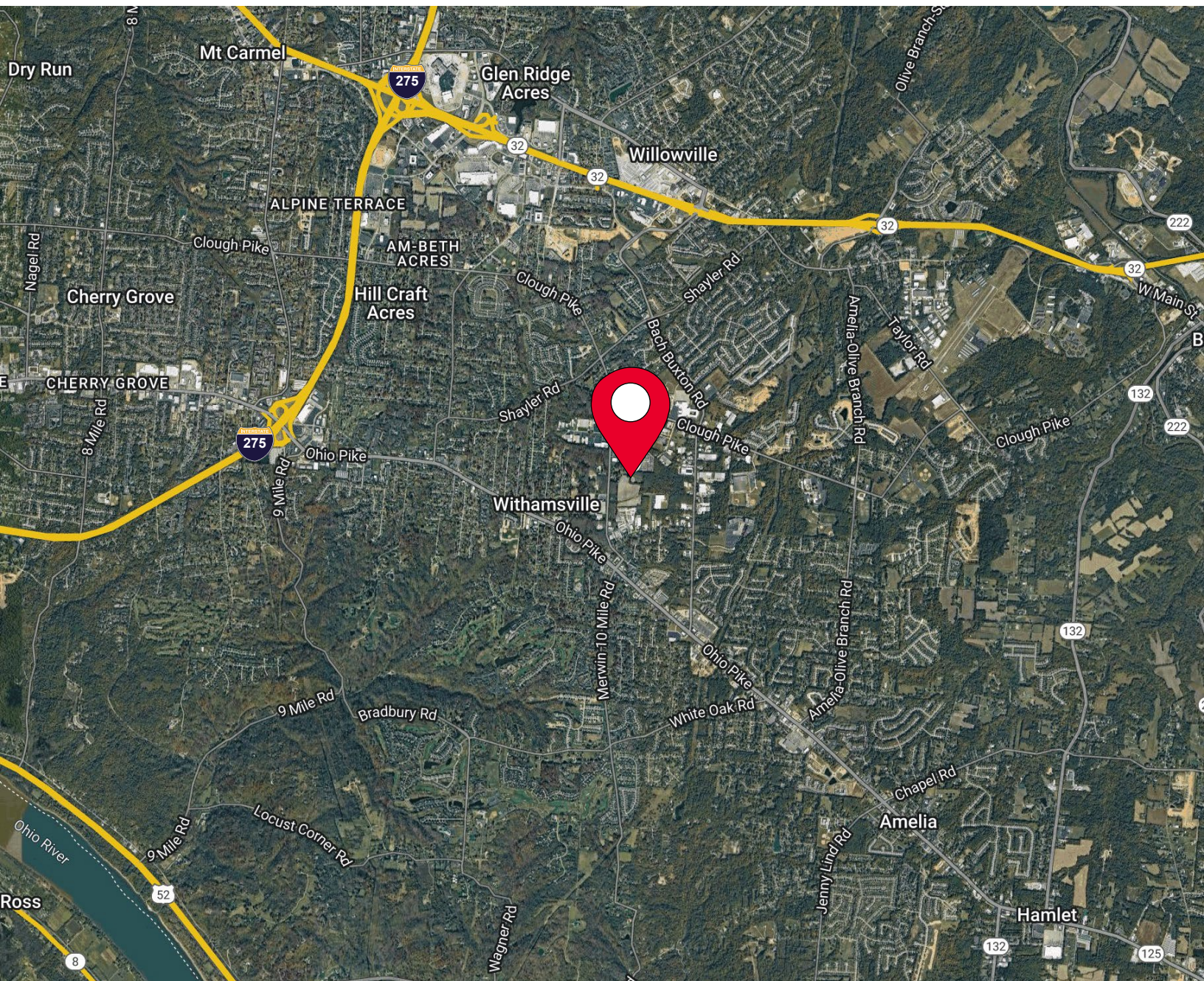
FOR SALE AND LEASE

4000-4024 PRECISION DRIVE

UNION TOWNSHIP, OH 45245



AERIAL LOCATION



For more information, contact:

SEATTLE STEIN
+1 513 763 3027
seattle.stein@cushwake.com

JEFF BENDER, SIOR, CCIM
+1 513 763 3046
jeff.bender@cushwake.com



201 E. Fourth Street, Suite 1800
Cincinnati, OH 45202
P: +1 513 421 4884
cushmanwakefield.com

©2024 Cushman & Wakefield. All rights reserved. The information contained in this communication is strictly confidential. This information has been obtained from sources believed to be reliable but has not been verified. NO WARRANTY OR REPRESENTATION, EXPRESS OR IMPLIED, IS MADE AS TO THE CONDITION OF THE PROPERTY (OR PROPERTIES) REFERENCED HEREIN OR AS TO THE ACCURACY OR COMPLETENESS OF THE INFORMATION CONTAINED HEREIN, AND SAME IS SUBMITTED SUBJECT TO ERRORS, OMISSIONS, CHANGE OF PRICE, RENTAL OR OTHER CONDITIONS, WITHDRAWAL WITHOUT NOTICE, AND TO ANY SPECIAL LISTING CONDITIONS IMPOSED BY THE PROPERTY OWNER(S). ANY PROJECTIONS, OPINIONS OR ESTIMATES ARE SUBJECT TO UNCERTAINTY AND DO NOT SIGNIFY CURRENT OR FUTURE PROPERTY PERFORMANCE.