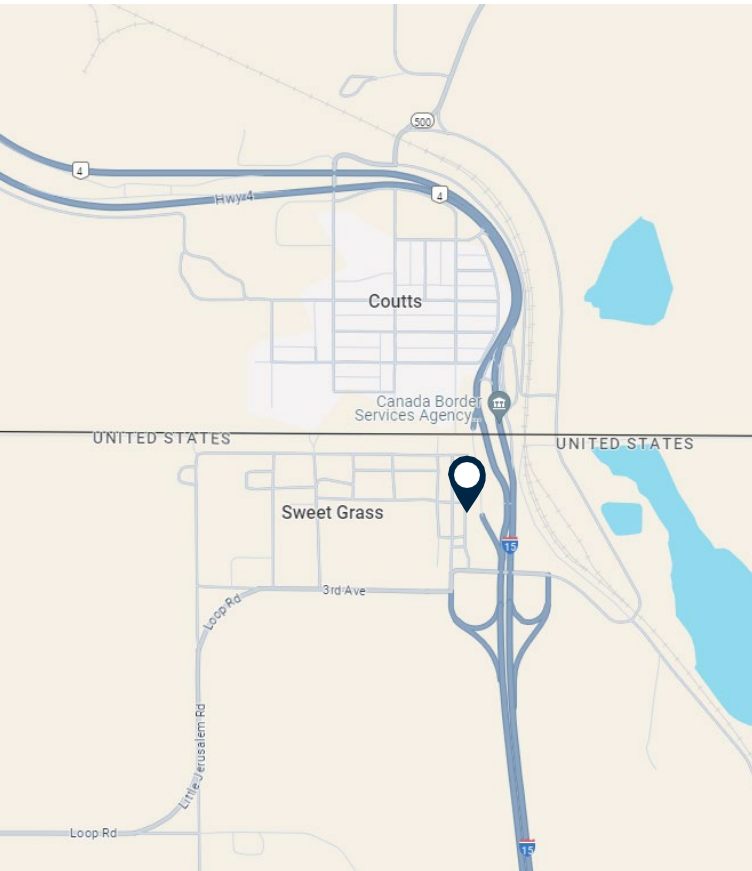
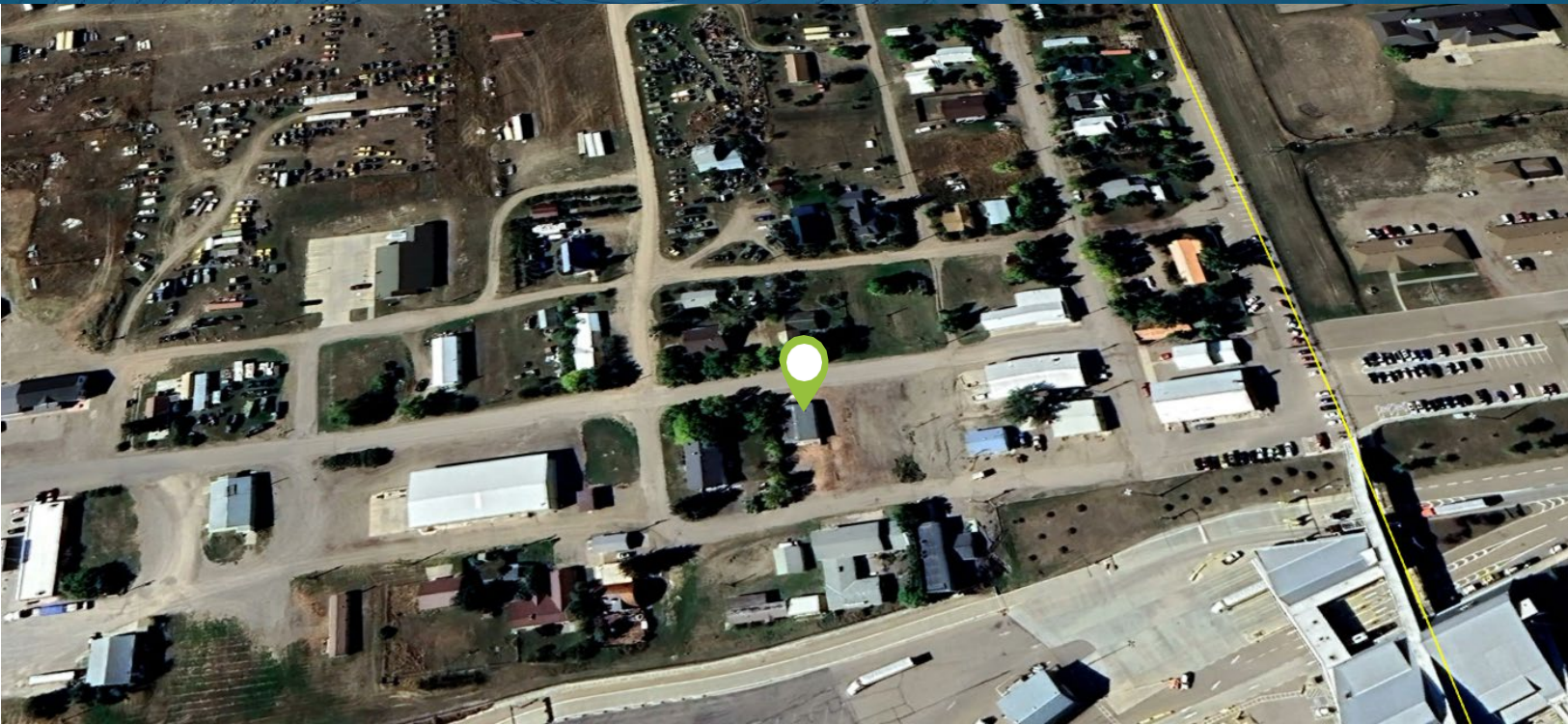


Office Space For Sale

224 Bank Street
Sweet Grass, MT 59484



Year Built	2003
Sale Price	\$125,000
Available Premises	750 Square Feet
Lot Size (Acres)	± 0.11 Acres
Parking	East and West side of the building.
Kitchen	Full kitchen
Bathrooms	Two bathrooms
Building Features	The building offers one office and an open area with workstations in place.
Location Features	Located near the United States and Canadian Border with easy access to I-15

Lacetta Isenberg

Broker – Home Sweet Home Realty Group

D: 406-788-1583

lacetta@HomeSweetHomeRealtyGroup.com

Colton Uzelac

Vice President

D: 972.980.6162

CUzelac@FischerCRE.com

Andrew Licea

Associate

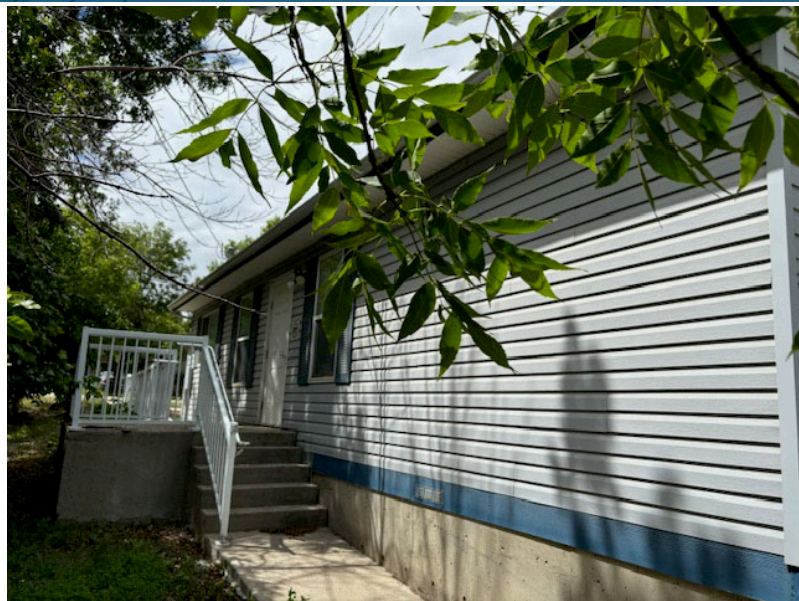
D: 972.980.6118

ALicea@FischerCRE.com



Office Space For Sale

224 Bank Street
Sweet Grass, MT 59484



Information concerning the property described herein has been obtained from other sources other than Fischer and we make no representations or warranties, express or implied, as to the accuracy or completeness of such information. Any and all references to age, square footage, and any other specific information are approximate and disclosed to the best of knowledge. The recipient bears the sole responsibility for verification of the accuracy of the information contained herein and bears all risk for any inaccuracies. Fischer shall have no liability or responsibility to any party for any loss or damage claimed to have arisen from reliance by any party on the information contained herein.

Lacetta Isenberg

Broker – Home Sweet Home Realty Group

D: 406-788-1583

lacetta@HomeSweetHomeRealtyGroup.com

Colton Uzelac

Vice President

D: 972.980.6162

CUzelac@FischerCRE.com

Andrew Licea

Associate

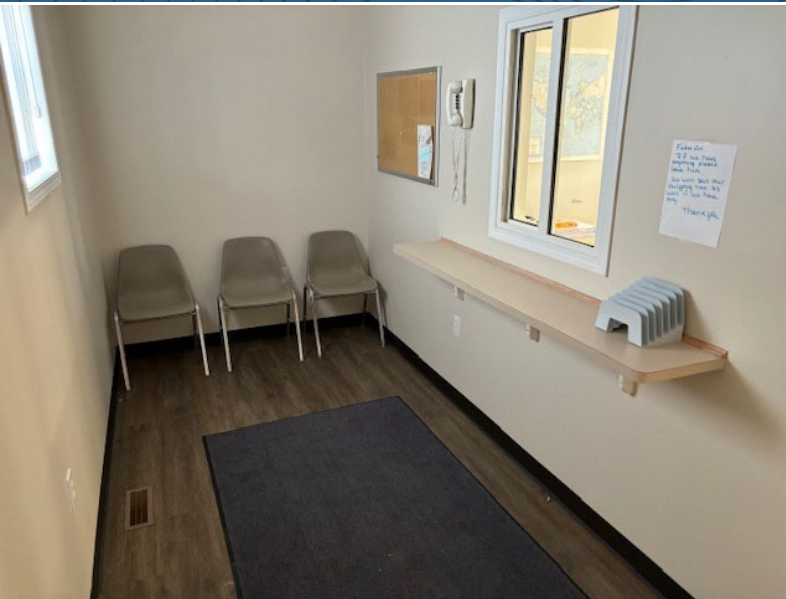
D: 972.980.6118

ALicea@FischerCRE.com



Office Space For Sale

224 Bank Street
Sweet Grass, MT 59484



Lacetta Isenberg

Broker - Home Sweet Home Realty Group

D: 406-788-1583

lacetta@HomeSweetHomeRealtyGroup.com

Colton Uzelac

Vice President

D: 972.980.6162

CUzelac@FischerCRE.com

Andrew Licea

Associate

D: 972.980.6118

ALicea@FischerCRE.com

