

CORONA

ANCHOR
RETAIL SPACE

2250-2284 Griffin Way
CORONA, CA

Retail Space
For Lease

Country Side Center



COUNTRY SIDE CENTER

Corona Retail Space Available

Retail opportunity at Country Side Center in Corona. Busy center with strong regional and national tenants. Visibility and easy access from CA-91 Freeway, one of the region's busiest commuter freeways.

- Located directly at Freeway offramp
- Strong daytime population
- Anchor unit with pylon signage visible from CA-91 Fwy
- Center visible from CA-91 Fwy; 230,000CPD

LOCATION

2250-2284 Griffin Way

NEQ CA-91 Fwy & McKinley St.

Corona, CA 92879

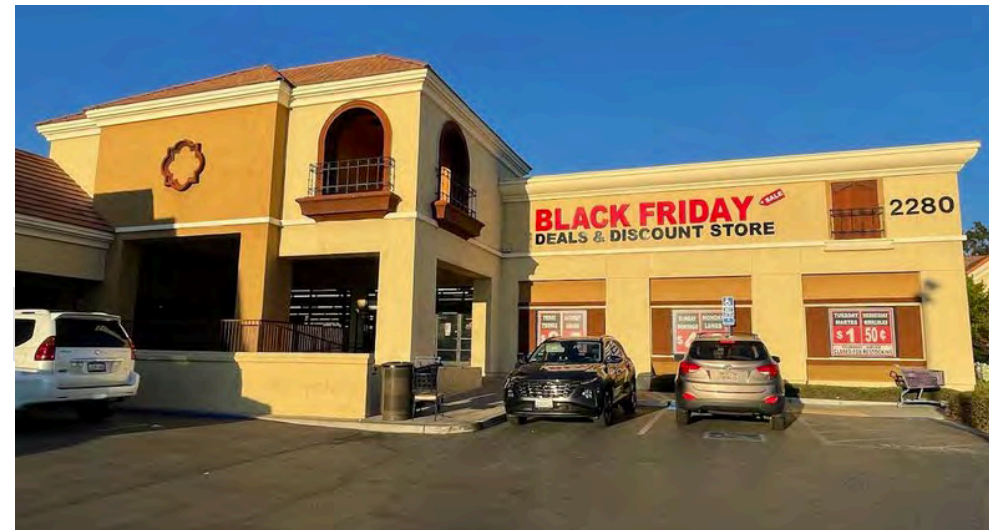
AVAILABLE

Suite 1C | 24,750 Sq. Ft. [Anchor - Freeway Pylon]

Suite 1F | 20,540 Sq. Ft. [Anchor - Freeway Pylon]

IN GOOD COMPANY

Key tenants at Country Side Center include El Torito, 85 Degrees Cafe, Jack In The Box and more. Nearby, Costco, Home Depot, Walmart and VONS draw traffic to the center.

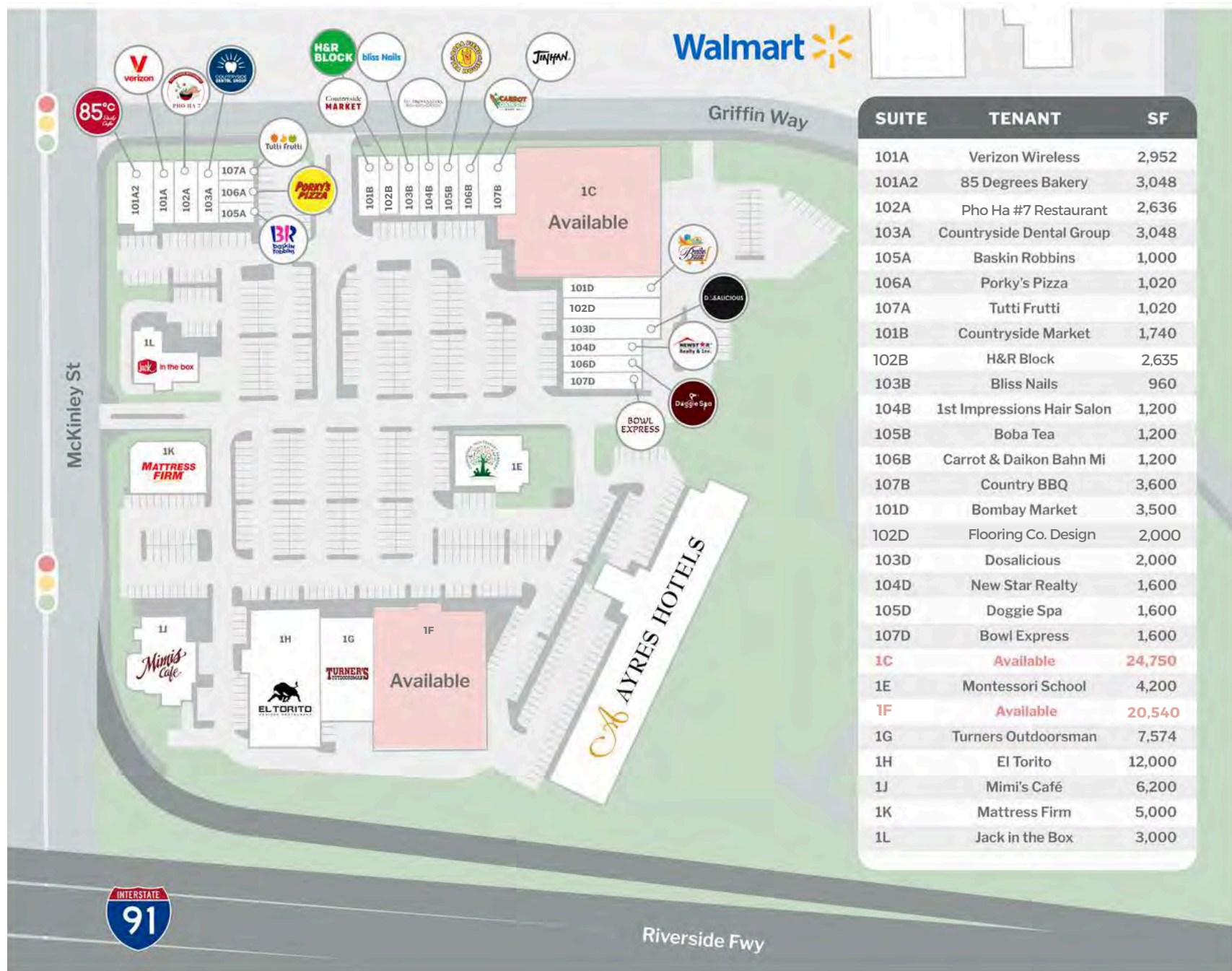


COMMERCIAL WEST BROKERAGE

Phil Berry | LIC# 1208635

Matt Berry | LIC# 2134414

(949) 723-7300 | mberry@commercialwest.com



COMMERCIAL
WEST

BROKERAGE

COUNTRY SIDE CENTER
CORONA, CA

COMMERCIAL WEST BROKERAGE
Matthew Berry, LIC# 2134414
949.723.7300 | mberry@commercialwest.com

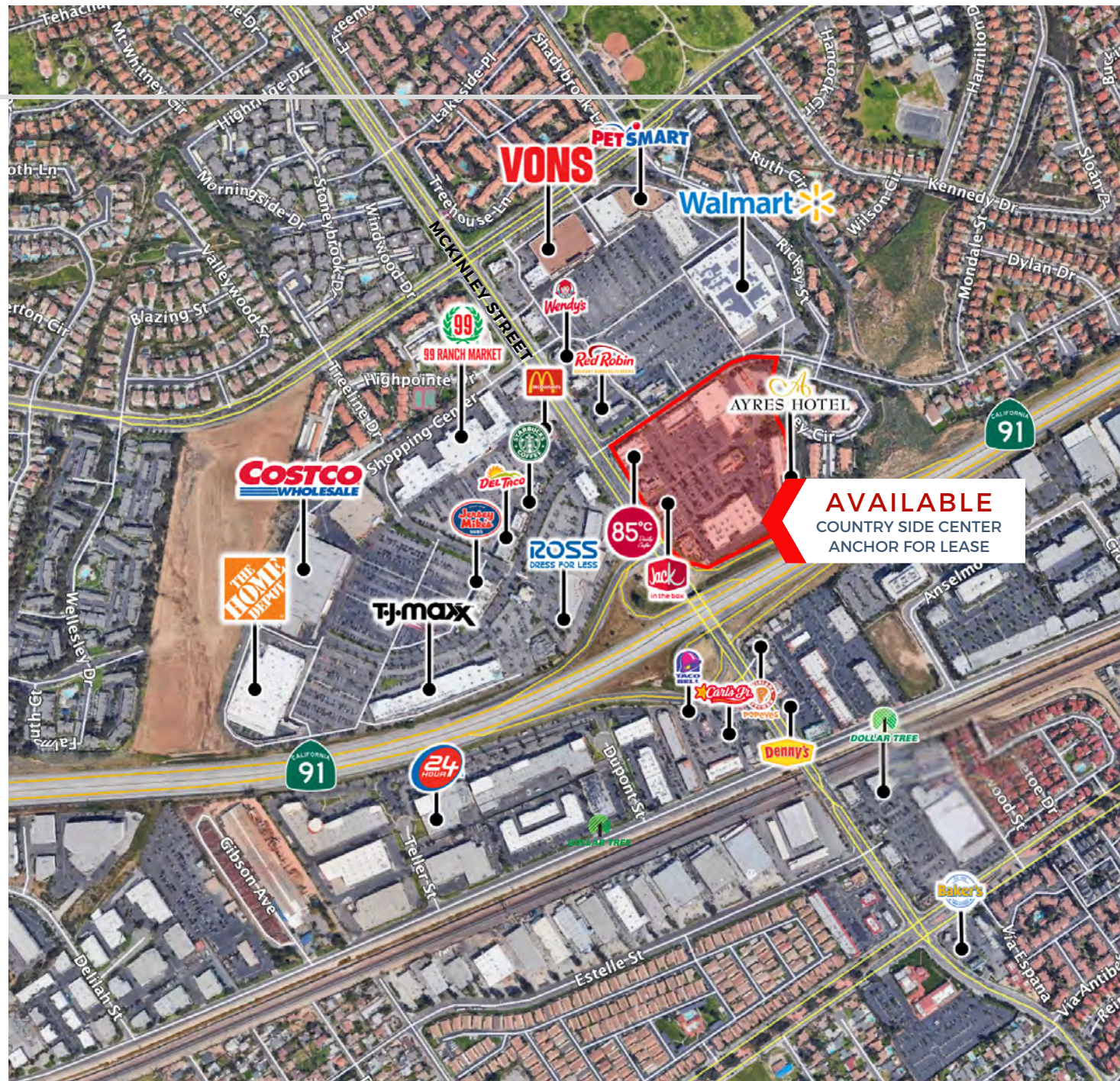
Location

Ideal Corona location
situated directly off CA-91
with freeway visibility.

COUNTRY SIDE CENTER
2250-2284 GRIFFIN WAY
CORONA, CA 92879

SUITE 1C | 24,750 SQ. FT.
SUITE 1F | 20,540 SQ. FT.
SUITE 102D | 2,000 SQ. FT.

TRAFFIC COUNT
MCKINLEY ST | 50,200 CPD
CA-91 FWY | 226,000 CPD



BY THE NUMBERS

2250-2284 Griffin Way, Corona, CA 92879

ESTIMATED POPULATION

1 mi | 25,447

2mi | 48,243

3 mi | 109,820

AVERAGE HH INCOME

1 mi | \$87,143

2mi | \$97,348

3 mi | \$95,809

DAYTIME POPULATION

1 mi | 24,441

2mi | 51,073

3 mi | 114,795

COMMERCIAL WEST BROKERAGE



Matt Berry, LIC#2134414

949.723.7300 | mberry@commercialwest.com

www.commercialwest.com