

For Lease

# Office Building

2,500 - 4,615 SF | Negotiable



## Medical Office Space

615 19th Street Columbus, Georgia 31901

### Property Highlights

- Class "B" Medical Office Building
- Piedmont Columbus Regional Midtown Medical Campus
- Full Service Lease
- Onsite, Responsive Property Management Staff

### Property Overview

Class "B" Medical Office Space is located on the Piedmont Columbus Regional Midtown Campus. Variety of spaces in various buildings on the medical campus.

Contact Broker for more details.

### Offering Summary

<b>Lease Rate:</b>	Negotiable
<b>Building Size:</b>	9,048 SF
<b>Available SF:</b>	2,500 - 4,615 SF
<b>Lot Size:</b>	1.77 Acres

### For More Information

**Jack Hayes, SIOR, CCIM, MICP**

O: 706 660 5418 x1002  
jhayes@g2cre.com | GA #336627

**Amy D. Gill, MICP, MRP**

O: 706 660 5418 x1009  
agill@g2cre.com | GA #381793

For Lease

# Office Building

2,500 - 4,615 SF | Negotiable



## Lease Information

<b>Lease Type:</b>	Full Service	<b>Lease Term:</b>	Negotiable
<b>Total Space:</b>	2,500 - 4,615 SF	<b>Lease Rate:</b>	Negotiable

## Available Spaces

Suite	Tenant	Size (SF)	Lease Type	Lease Rate	Description
100	Available	4,615 SF	Full Service	Negotiable	Medical Office space is currently built out as business office space, located off Hamilton Road on the Piedmont Midtown Medical campus. This large space boasts 12 exam rooms, 2 labs/triage, a large waiting area, a reception with a storage room, and a private restroom. VR Tour: <a href="https://my.matterport.com/show/?m=utGuAkcjT8w">https://my.matterport.com/show/?m=utGuAkcjT8w</a>
A	Available	2,500 SF	Full Service	Negotiable	Large Waiting room and check-in area, 6 small offices, private office or conference room. Amble storage available. VR Tour: <a href="https://my.matterport.com/show/?m=tYJ6yR2CkFQ">https://my.matterport.com/show/?m=tYJ6yR2CkFQ</a>

For Lease

# Office Building

2,500 - 4,615 SF | Negotiable



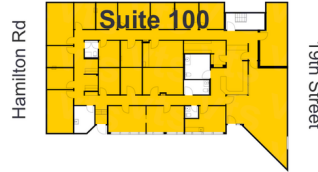
For Lease

# Office Building

2,500 - 4,615 SF | Negotiable

615 Midtown Medical Center

615 19th Street  
1st Floor, Suite 100  
Columbus, GA



Work Areas QTY

- Open Area 1
- Room 18
- Exam Room 1

Common Areas QTY

- Kitchen 1
- Utility Area 1
- Bathroom 5



## Suite 100 Floor Plan



We obtained the information above from sources we believe to be reliable. However, we have not verified its accuracy and make no guarantee, warranty or representation about it. It is submitted subject to the possibility of errors, omissions, change of price, rental or other conditions, prior sale, lease or financing, or withdrawal without notice. We include projections, opinions, assumptions or estimates for example only, and they may not represent current or future performance of the property. You and your tax and legal advisors should conduct your own investigation of the property and transaction.

Post Office Box 4529  
Columbus, GA 31904  
706 660 5418 tel  
[G2cre.com](http://G2cre.com)



For Lease

# Office Building

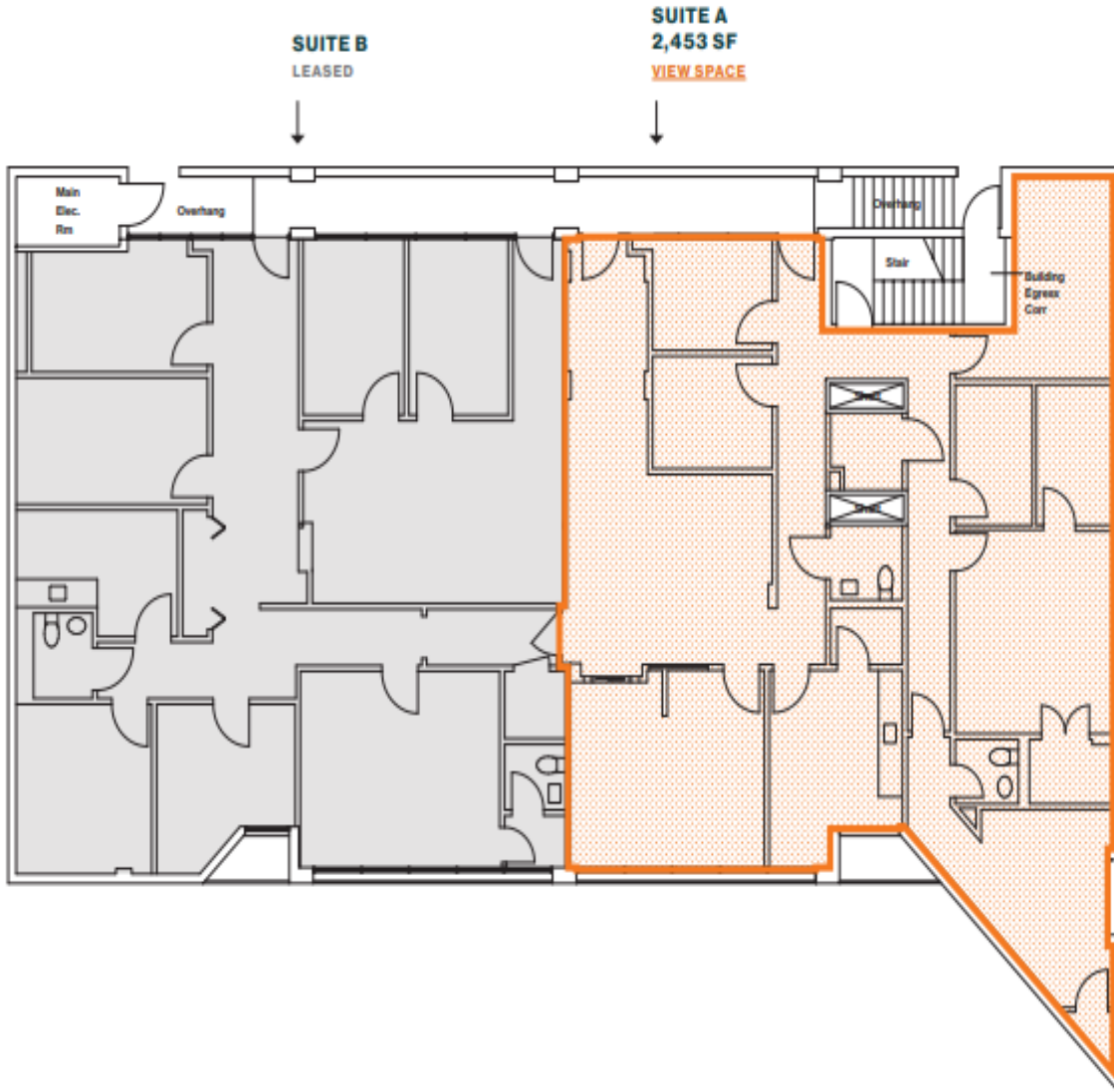
2,500 - 4,615 SF | Negotiable



AVAILABLE



LEASED



Suite A Floor Plan

For Lease

# Office Building

2,500 - 4,615 SF | Negotiable



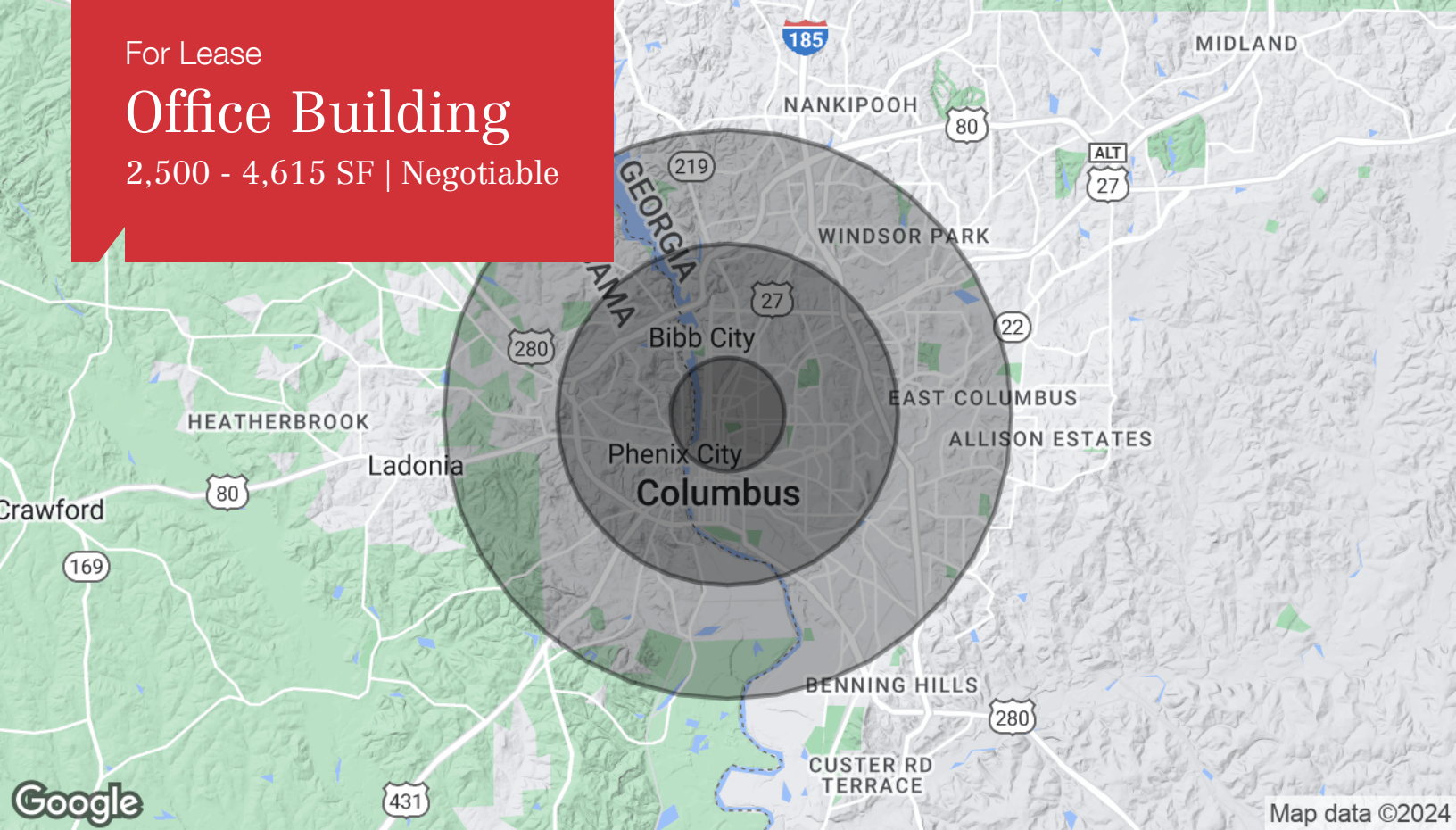
Map data ©2024 Imagery ©2024 Maxar Technologies, U.S. Geological Survey



For Lease

# Office Building

2,500 - 4,615 SF | Negotiable



Population	1 Mile	3 Miles	5 Miles
<b>Total Population</b>	8,314	64,646	131,514
<b>Average Age</b>	36.1	35.6	35.5
<b>Average Age (Male)</b>	35.3	33.1	33.5
<b>Average Age (Female)</b>	37.2	37.4	37.1

Households & Income	1 Mile	3 Miles	5 Miles
<b>Total Households</b>	3,683	27,539	54,553
<b># of Persons per HH</b>	2.3	2.3	2.4
<b>Average HH Income</b>	\$27,474	\$42,473	\$47,105
<b>Average House Value</b>	\$84,110	\$165,295	\$147,933

\* Demographic data derived from 2020 ACS - US Census