

1375

PEACHTREE

Bespoke Brilliance:
Redefine Your Work Environment

7-Story Class A
Office in Midtown

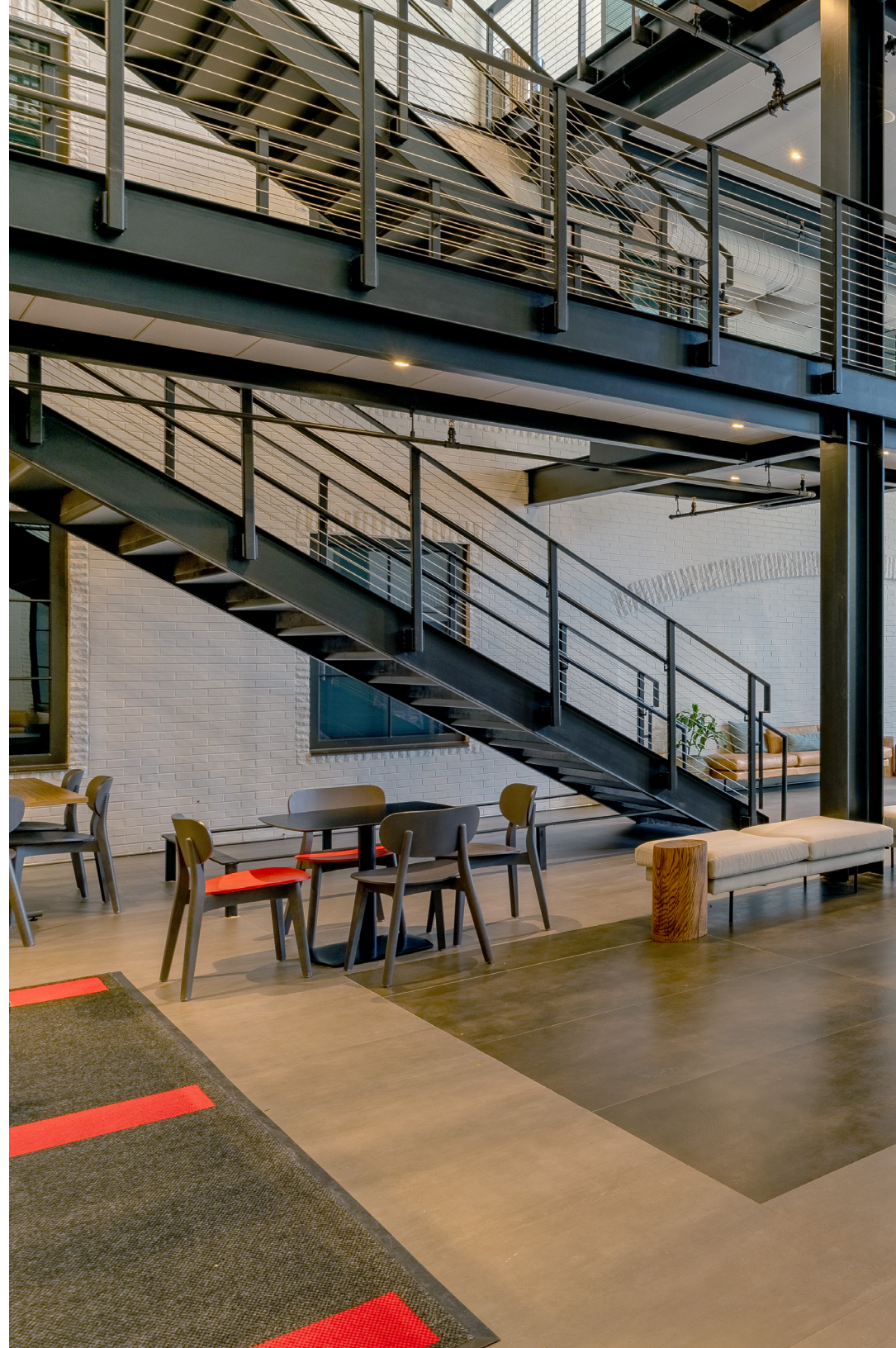


1375 Peachtree Street NE, Atlanta, GA 30309

Elevate Your Space

At 1375 Peachtree, the modern and sophisticated exterior immediately captivates, providing a distinctive Midtown experience from the moment you arrive.

Availabilities ranging from 3,000 SF - 100,000 SF





Step inside to discover a stunningly renovated lobby complemented by premium amenities and open collaboration spaces crafted to unite people and spark innovation.

These features blend a contemporary flair with the timeless charm of Midtown, providing an unparalleled office experience.



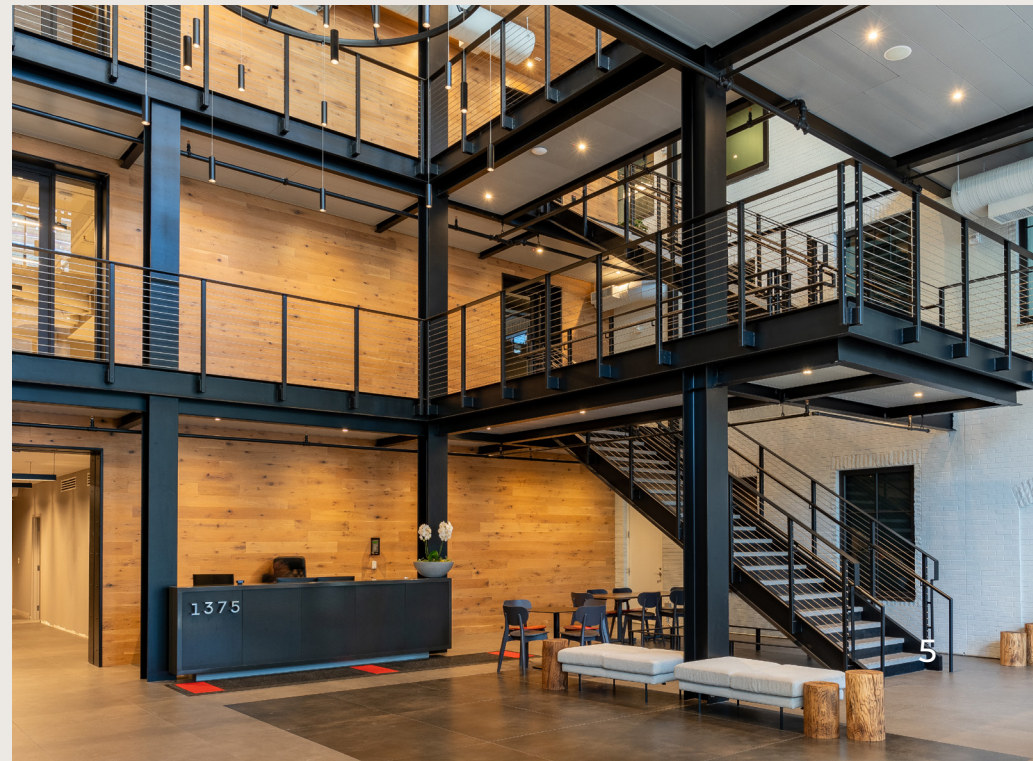
1375

1375

The Advantage

As Midtown's front porch, 1375 Peachtree provides unparalleled proximity to Atlanta's renowned culinary, retail, arts, and entertainment districts. With effortless access to highways and transit options only minutes away, your daily commute is guaranteed to be smooth and convenient.

Position your company at 1375 Peachtree and experience the strategic edge of a premier Midtown location. Situated in the vibrant heart of Atlanta, this workplace delivers a highly desirable modern business lifestyle, perfect for attracting and retaining the area's top talent.



Building Highlights

ONSITE AMENITIES

- Coming Spring 2025: High-end Restaurant and Food Hall
- Expansive Group and Individual Seating Areas
- Recently Renovated Lobby with Open Staircase and Pristine Finishes
- Collaboration Spaces
- Conferencing Facility
- Street Level Seating
- Fitness Center with Showers and Lockers
- Indoor Bike Storage
- 1375 House Car Available M-F 11:00AM - 2:00 PM

EXTERIOR FEATURES

- Modernized Façade
- Glass and Steel Grand Entrance
- Street Level Seating

OUTDOOR TENANT AMENITY DECK

- Midtown Views
- Indoor and Outdoor Space





FRENCH BISTRO



FOOD HALL WITH THREE VENDORS

Midtown Walkability

Less Than 10 MIN WALK

- Piedmont Park
- Cafe Intermezzo
- The Oceanaire
- Seafood Room
- STK Steak House

Less Than 5 MIN WALK

- Colony Square
- Woodruff Arts Center
- SCAD
- Ansley Park

20+ HOTELS

within a 1 mile radius

- Loews Atlanta Hotel
- Four Seasons
- Hyatt

15+ MULTIFAMILY

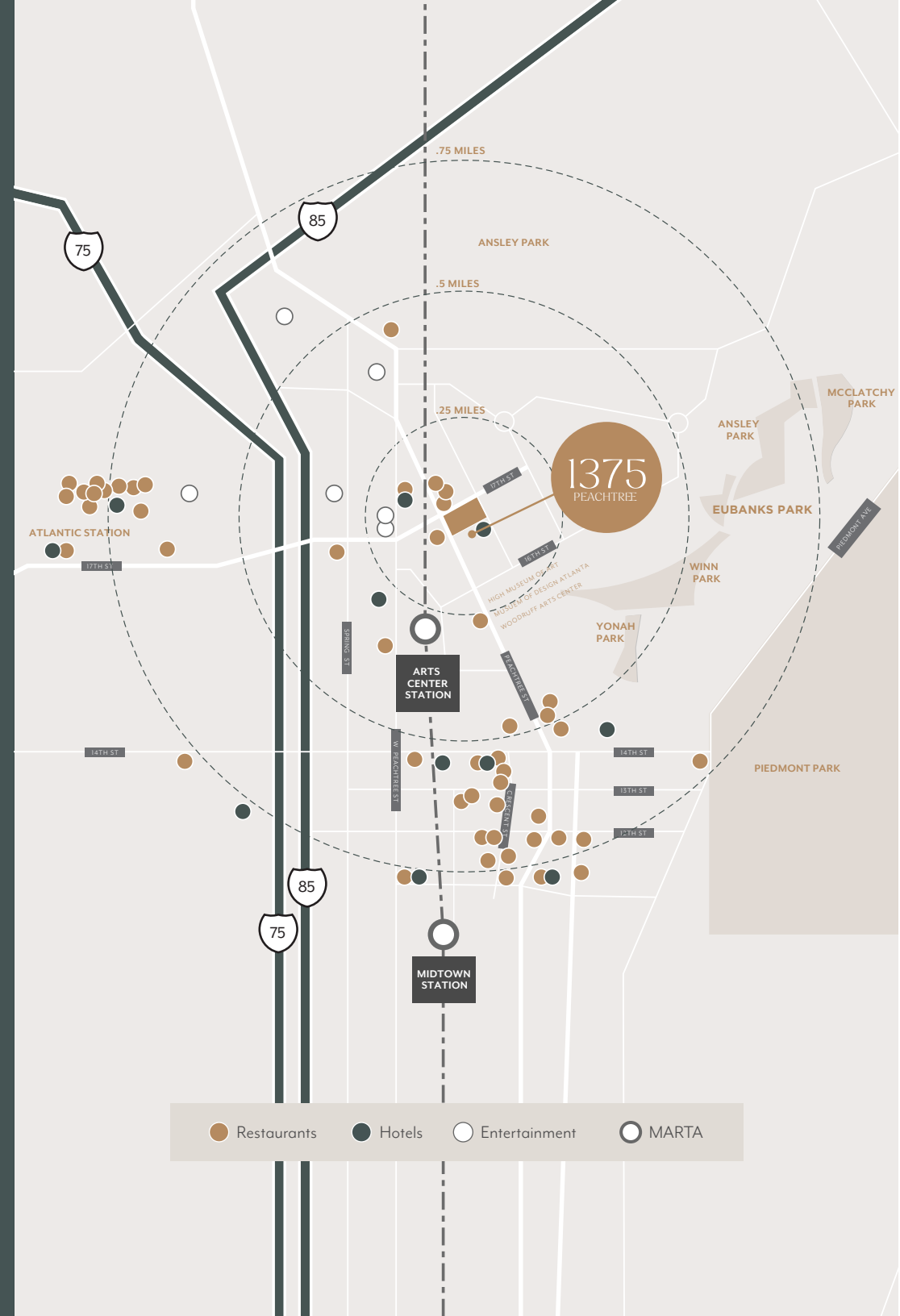
within a 1 mile radius

including Greystar's new Micro-Unit Project that will be right across the street from 1375 Peachtree Hyatt

10+ RESTAURANTS AND BARS

within a 1 mile radius

- 5Church Midtown
- Hudson Grille Midtown
- Establishment
- Saints + Council
- Prime on Peachtree
- The Vortex Bar & Grill
- The Steamhouse Lounge
- South City Kitchen Midtown







1375

FedEx Office

Transit and Accessibility

MARTA ACCESS

- Arts Center Station (0.3 miles)
- Midtown Station (0.9 miles)

TREE-LINED SIDEWALKS

- 14 miles of existing sidewalks
- Two more planned

INTERSTATE ACCESS

- Straight shot to I-75/I-85
- Interchange via 17th Street

TOP TALENT POOLS

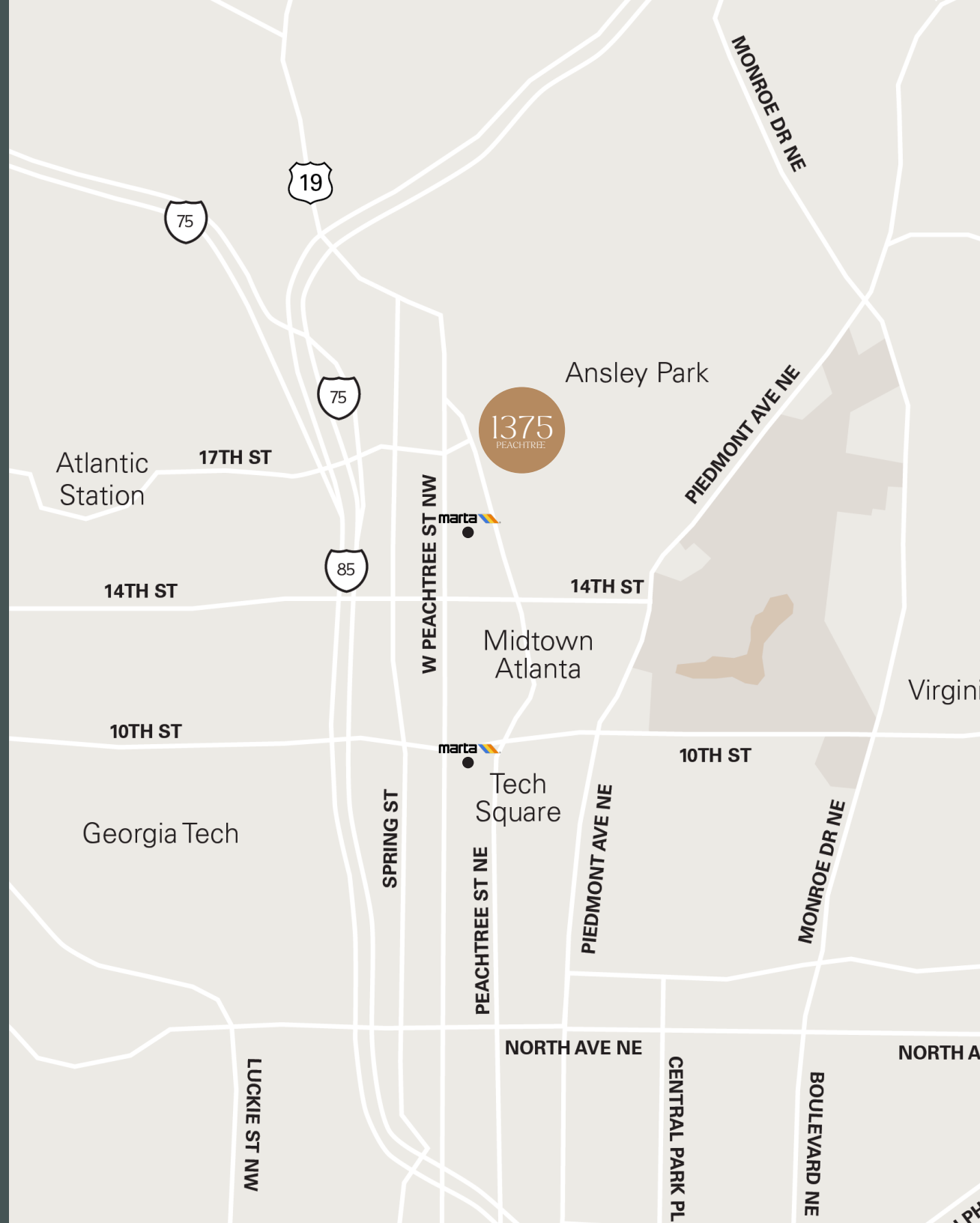
- Georgia Tech
- Emory University
- SCAD Atlanta
- Georgia State University
- Morehouse
- Spelman
- Clark Atlanta University

CONNECTED BIKE LANES

- 5 miles of existing bike lanes
- 11 more planned bike lanes

NEARBY NEIGHBORHOODS

- Ansley Park
- Westside
- Morningside
- Virginia Highlands



Setting the highest standard in Midtown

At 1375 Peachtree, immerse yourself in a range of modern amenities crafted to provide an unparalleled Midtown experience for tenants and their guests. The building showcases a thoughtfully curated selection of first-class features designed for your ultimate convenience.

Hosting a VIP client, enjoying a quick meal, working out, or indulging in a revitalizing coffee break? At 1375 Peachtree, all these conveniences are just steps away, ensuring you have everything you need effortlessly at hand.

- 24/7 Onsite Security
- Onsite Property Management





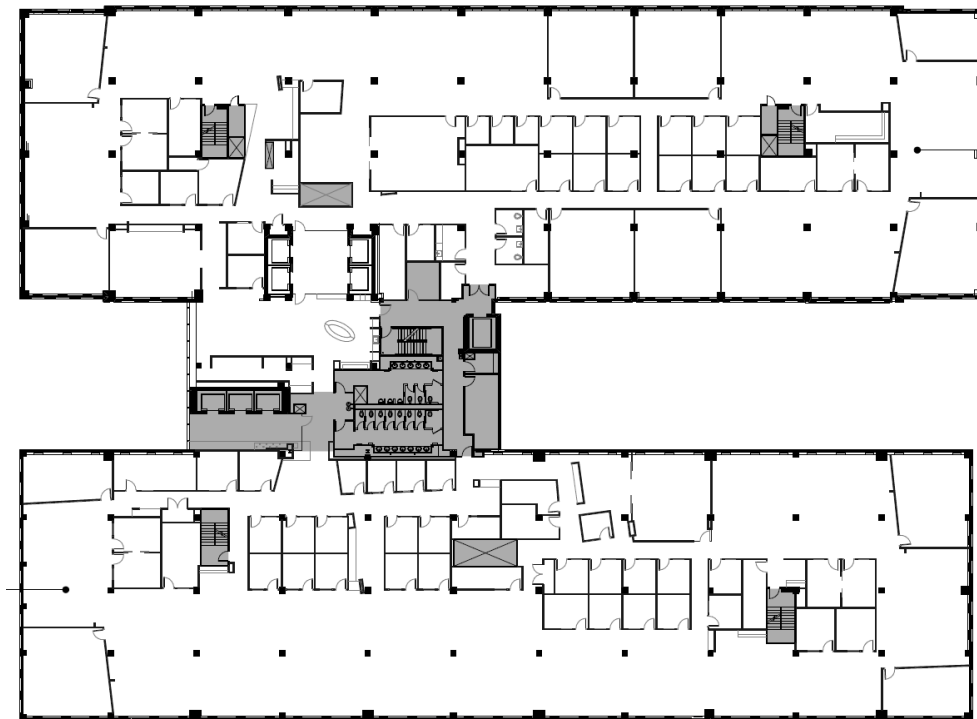
Innovative Spaces for Tomorrow's Ideas

As the nature of work evolves rapidly, the need for dynamic spaces that foster connection and collaboration has never been greater. 1375 Peachtree presents smart, open workspaces where flexibility, productivity, and innovation come together to spark groundbreaking ideas. With cutting-edge collaboration tools and a modernized office environment, we are dedicated to enhancing creativity and paving the way for the future of innovation.



Typical Floor Plate

26,000 - 52,000 SF



Large 100,000 SF
Block of Space Available

Exterior Signage
Opportunity Available
Fronting Peachtree Street

1375

PEACHTREE

Broker Contacts:

Brad Kirschner

Senior Managing Director
† 404-509-5930
brad.kirschner@nmrk.com

Stewart Thrash

Senior Managing Director
† 404-926-1074
stewart.thrash@nmrk.com

Craig Kalinowski

Executive Managing Director
† 404-806-2513
craig.kalinowski@nmrk.com

RJ Zurak

Senior Managing Director
† 770-552-2420
rj.zurak@nmrk.com

NEWMARK

The information contained herein has been obtained from sources deemed reliable but has not been verified and no guarantee, warranty or representation, either express or implied, is made with respect to such information. Terms of lease and availability are subject to change or withdrawal without notice.

