

FOR SALE

7.2 ACRES ±313,632 SF



5219 McHENRY AVENUE

MODESTO, CA

7.2 ACRES VACANT LAND ALONG HIGH TRAFFIC CORRIDOR
INCLUDES NINO'S BAR AND A&J FRUIT STAND

Steve Dunn | Senior Director | +1 209 992 0953 | steve.dunn@cushwake.com | LIC #01410812

PROPERTY DETAILS

Address:	5219 McHenry Avenue Modesto, CA 95356
APN:	004-094-012
Space Available:	7.2 Acres $\pm 313,632$ SF Includes Nino's Bar and A&J Fruit Stand
Current Zoning:	Agriculture (Stanislaus County) Nino's Bar is a Legal, Non-Conforming Use as defined by the Country planner
Proposed Zoning:	Please contact Stanislaus County
Electricity/Gas:	PG&E
Water:	Domestic well (Used for bar & fruit stand)
Sewer:	Septic
Storm drain:	Stanislaus County
Asking Price:	\$3,150,000 per Lot (\$10.04/SF)

- Excellent Development Location with many different zoning use potential
- Adjacent Parcels can be purchased with this property
- Highly trafficked location with over 15,408 ADT
- Northern Modesto is very desirable for new commercial and residential development
- In close proximity to major commercial and industrial centers as well as residential
- McHenry Avenue houses **Amazon** along with major new and used car dealerships in Modesto such as Honda, Chevrolet, Nissan, Jeep, Dodge, Subaru, Toyota, KIA, Lexus, BMW, Acura, AUDI, Infiniti as well as CARMAX and Roberts Auto Sales
- Also includes the building and lease

2022 DEMOGRAPHICS HIGHLIGHTS



194,274
POPULATION
Within 5 Miles



68,181
HOUSEHOLDS
Within 5 Miles



\$91,115
AVERAGE HOUSEHOLD INCOME
Within 5 Miles

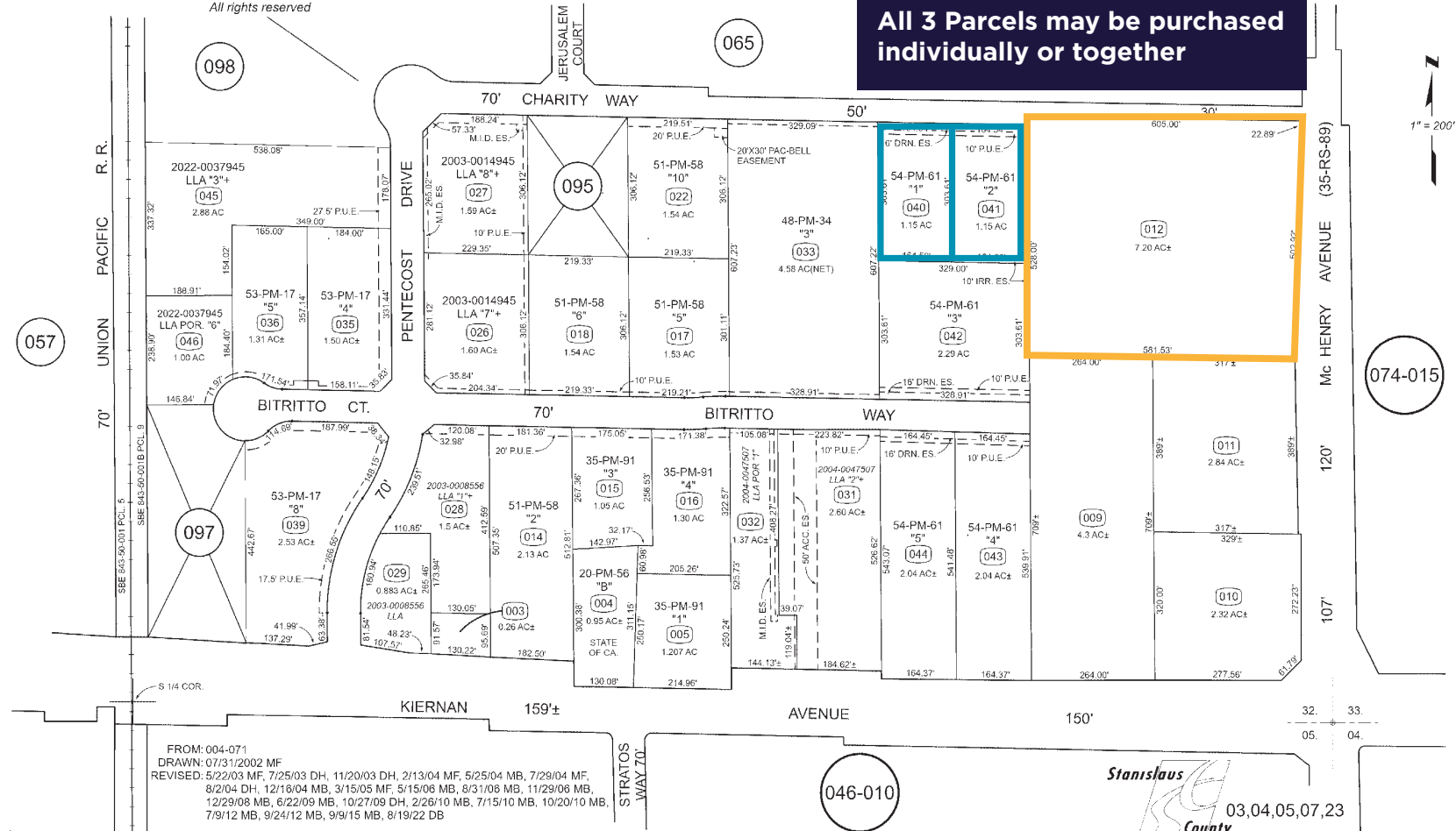


POR. S 1/2 SECTION T.2S. R.9E. M.D.B. & M.

004 — 094

THIS MAP FOR ASSESSMENT
PURPOSES ONLY
Copyright 2001 Stanislaus County
All rights reserved

All 3 Parcels may be purchased
individually or together



Stanislaus
County
Assessor

03,04,05,07,23

004 — 094

Population	1 MILE	3 MILES	5 MILES
Total Population	683	73,092	194,274
2023 - 2028	-0.15%	0.97 %	1.01%
2010 - 2023	1.64%	8.27%	8.43%
Households & Income	1 MILE	3 MILES	5 MILES
Total Population	229	26,199	68,181
2023 - 2028	0.00%	0.90 %	0.94%
2010 - 2023	0.88%	7.85%	7.99%
Average HH Income	\$130,452	\$94,241	\$91,115

ALL 3 PARCELS ARE AVAILABLE

PARCEL
MAP



FOR MORE INFORMATION, PLEASE CONTACT:

STEVE DUNN

Senior Director
+1 209 992 0953
steve.dunn@cushwake.com
LIC #01410812



©2025 Cushman & Wakefield. All rights reserved. The information contained in this communication is strictly confidential. This information has been obtained from sources believed to be reliable but has not been verified. NO WARRANTY OR REPRESENTATION, EXPRESS OR IMPLIED, IS MADE AS TO THE CONDITION OF THE PROPERTY (OR PROPERTIES) REFERENCED HEREIN OR AS TO THE ACCURACY OR COMPLETENESS OF THE INFORMATION CONTAINED HEREIN, AND SAME IS SUBMITTED SUBJECT TO ERRORS, OMISSIONS, CHANGE OF PRICE, RENTAL OR OTHER CONDITIONS, WITHDRAWAL WITHOUT NOTICE, AND TO ANY SPECIAL LISTING CONDITIONS IMPOSED BY THE PROPERTY OWNER(S). ANY PROJECTIONS, OPINIONS OR ESTIMATES ARE SUBJECT TO UNCERTAINTY AND DO NOT SIGNIFY CURRENT OR FUTURE PROPERTY PERFORMANCE.