

**FOR
SUBLEASE**

2388 Route 9 Malta, NY



FEATURES

- 4,067 square feet of modernly appointed clinical medical space
- Available for sublease as of **June 1, 2024**
- 28,036 rsf medical building with great business synergistic opportunities
- Ample parking in close proximity with easily accessible entrance drop off

LOCATION & AMENITIES

- Conveniently located on Route 9 between I87 exits 11 and 12
- Ample eateries and retail services in close proximity

**FOR MORE
INFORMATION
PLEASE
CONTACT**

Kyle J. Bradley, CPA
NYS Licensed Associate Real Estate Broker
(518) 462-7491 x 107 office
(845) 325-1568 cell
kbradley@carrowrealestate.com



**FOR
SUBLEASE**

2388 Route 9 Malta, NY



ECONOMICS

- **\$16.88** per rsf per year for base rent increased 3% annually
- **\$7.45** per rsf per year for current CAM (Common Area Maintenance costs)
- **\$24.33** per sf year for combined base rent and CAM = **\$ 8,246** month
- Tenant pays own utilities and suite cleaning
- Financial opportunity from existing tenant sublease

**FOR MORE
INFORMATION
PLEASE
CONTACT**

Kyle J. Bradley, CPA
NYS Licensed Associate Real Estate Broker
(518) 462-7491 x 107 office
(845) 325-1568 cell
kbradley@carrowrealestate.com



**FOR
SUBLEASE**

2388 Route 9 Malta, NY



CURRENT TENANTS

- OrthoNY
- Saratoga Physical Therapy Association
- Occupational Medicine
- Hanger Clinic

**FOR MORE
INFORMATION
PLEASE
CONTACT**

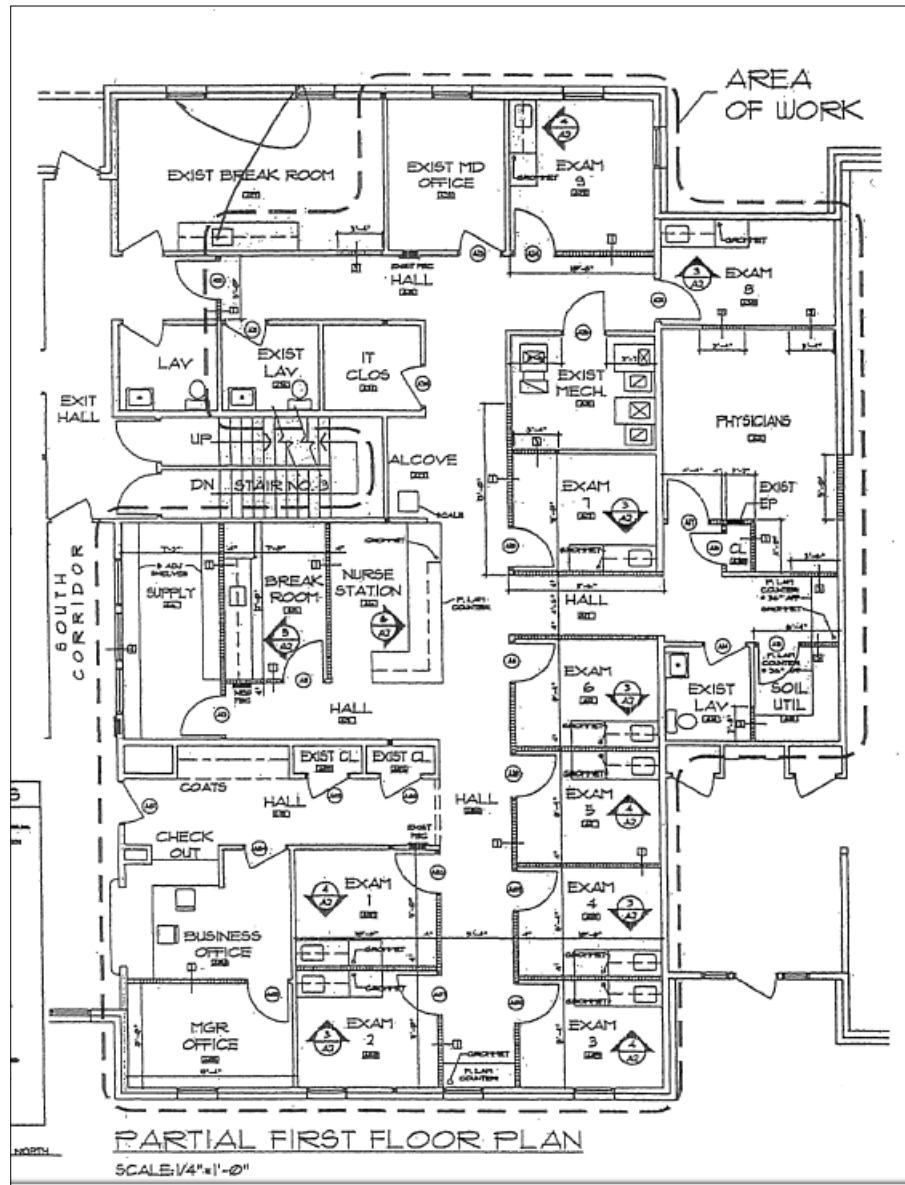
Kyle J. Bradley, CPA
NYS Licensed Associate Real Estate Broker
(518) 462-7491 x 107 office
(845) 325-1568 cell
kbradley@carrowrealestate.com

 **Carrow**
Adding Value Through
Professional Real Estate Services

**FOR
SUBLEASE**

2388 Route 9 Malta, NY

FLOORPLAN



**FOR MORE
INFORMATION
PLEASE
CONTACT**

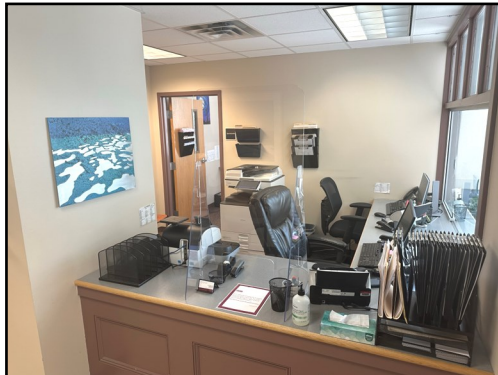
Kyle J. Bradley, CPA
NYS Licensed Associate Real Estate Broker
(518) 462-7491 x 107 office
(845) 325-1568 cell
kbradley@carrowrealestate.com

 **Carrow**
Adding Value Through
Professional Real Estate Services

**FOR
SUBLEASE**

2388 Route 9 Malta, NY

PHOTOS



**FOR MORE
INFORMATION
PLEASE
CONTACT**

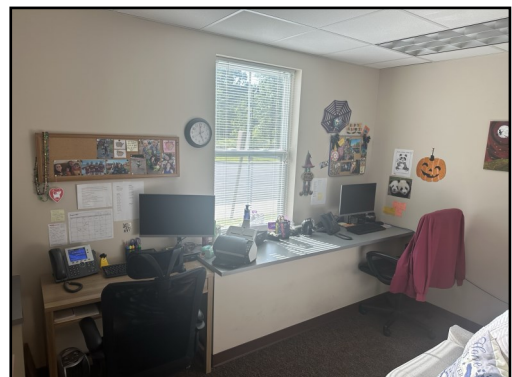
Kyle J. Bradley, CPA
NYS Licensed Associate Real Estate Broker
(518) 462-7491 x 107 office
(845) 325-1568 cell
kbradley@carrowrealestate.com

 **Carrow**
Adding Value Through
Professional Real Estate Services

**FOR
SUBLEASE**

2388 Route 9 Malta, NY

PHOTOS



**FOR MORE
INFORMATION
PLEASE
CONTACT**

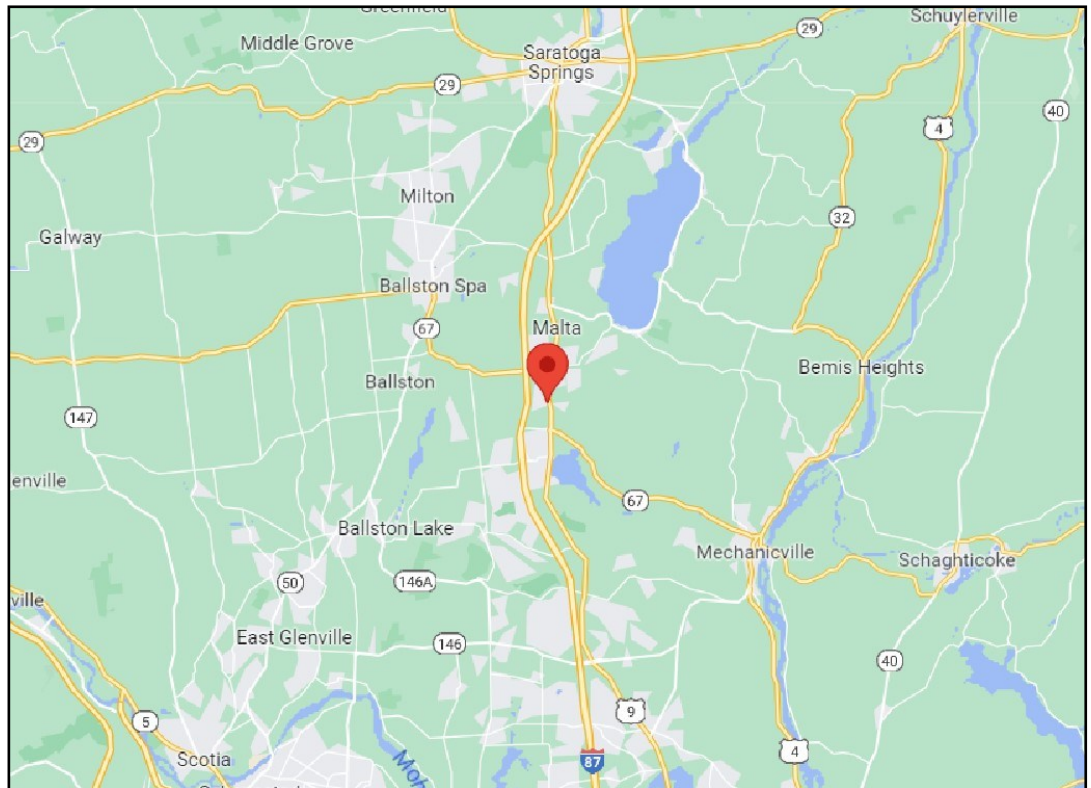
Kyle J. Bradley, CPA
NYS Licensed Associate Real Estate Broker
(518) 462-7491 x 107 office
(845) 325-1568 cell
kbradley@carrowrealestate.com

 **Carrow**
Adding Value Through
Professional Real Estate Services

**FOR
SUBLEASE**

2388 Route 9 Malta, NY

MAP



**FOR MORE
INFORMATION
PLEASE
CONTACT**

Kyle J. Bradley, CPA
NYS Licensed Associate Real Estate Broker
(518) 462-7491 x 107 office
(845) 325-1568 cell
kbradley@carrowrealestate.com

 **Carrow**
Adding Value Through
Professional Real Estate Services