



Kauhi Street

Komohana Street

# 91-445 Komohana Street

**FEE SIMPLE | INDUSTRIAL FOR SALE**

**9.52 ACRE PARCEL IN CAMPBELL INDUSTRIAL PARK**



# ABOUT THE PROPERTY

An incredibly rare opportunity to purchase a 9.52 acre level and rectangle fee simple I-2 zoned parcel in Campbell Industrial Park. This mostly paved corner parcel is fully fenced with 6 curb cuts, mature landscaping/screening and is bordered by a drainage canal on 2 sides for added security. Included in the sale is a permitted 3,300 square foot office.

## CONTACT

**William Froelich (B), JD, SIOR, CCIM\***

Vice Chair

Industrial Services Division

Lic# RB-21658

808 523 9711

[william.froelich@colliers.com](mailto:william.froelich@colliers.com)

\*FFFM LLC, Exclusively contracted to Colliers International HI, LLC

# PROPERTY INFORMATION

TMK No. (1) 9-1-32-88

Zoning I-2

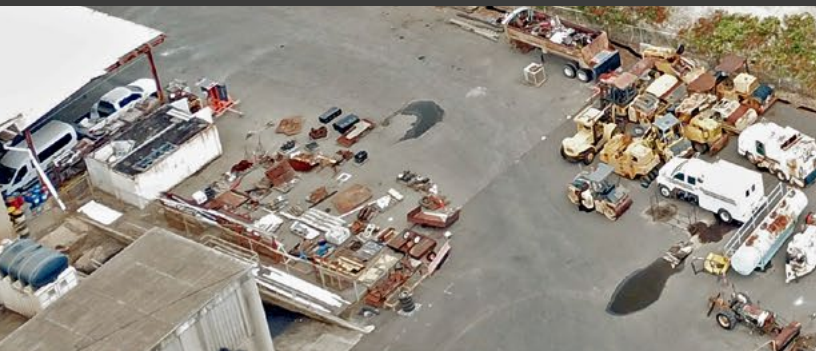
Building Size 3,300 SF

Lot Size 9.52 Acres

Sale Price \$27,000,000

Tenure Fee Simple

- Seller may consider a long-term ground lease, creation of a CPR for the sale of smaller lots, or a build to suit.



Komohana Street



220 S. King Street, Suite 1800  
Honolulu, Hawaii 96813  
808 524 2666  
colliers.com

This document/email has been prepared by Colliers for advertising and general information only. Colliers makes no guarantees, representations or warranties of any kind, expressed or implied, regarding the information including, but not limited to, warranties of content, accuracy and reliability. Any interested party should undertake their own inquiries as to the accuracy of the information. Colliers excludes unequivocally all inferred or implied terms, conditions and warranties arising out of this document and excludes all liability for loss and damages arising there from. This publication is the copyrighted property of Colliers and /or its licensor(s). © 2024. All rights reserved. This communication is not intended to cause or induce breach of an existing listing agreement.