

FOR LEASE



**300
4th
Street**

MOSCONE ADJACENT OFFICE BUILDING +/- 7,200 SF OFFICE FLOOR

JAKE LEVINSON

JAKE@GROUNDMATRIX.COM

+1 (415) 786-4303

ALEX FEE

ALEX@GROUNDMATRIX.COM

+1 (209) 981-7753





**300
4th
Street**



JAKE LEVINSON
JAKE@GROUNDMATRIX.COM
+1 (415) 786-4303
ALEX FEE
ALEX@GROUNDMATRIX.COM
+1 (209) 981-7753

OFFERING HIGHLIGHTS

- Newly renovated lobby, corridors, and suites.
- Each floor holds private creative offices and conference rooms.
- Full building elevator.
- Refinished restrooms.
- Views of Moscone Center
- Full HVAC

AVAILABLE FLOORS

Floor	Size	Rent
Ground Level	3,600 SF	\$36.00 NNN
Second Floor	3,600 SF	\$36.00 NNN
Both Floors	7,200 SF	\$36.00 NNN

300
4th
Street



JAKE LEVINSON
JAKE@GROUNDMATRIX.COM
+1 (415) 786-4303

ALEX FEE
ALEX@GROUNDMATRIX.COM
+1 (209) 981-7753





300
4th
Street



JAKE LEVINSON
JAKE@GROUNDMATRIX.COM
+1 (415) 786-4303
ALEX FEE
ALEX@GROUNDMATRIX.COM
+1 (209) 981-7753

GM



300
14th
Street

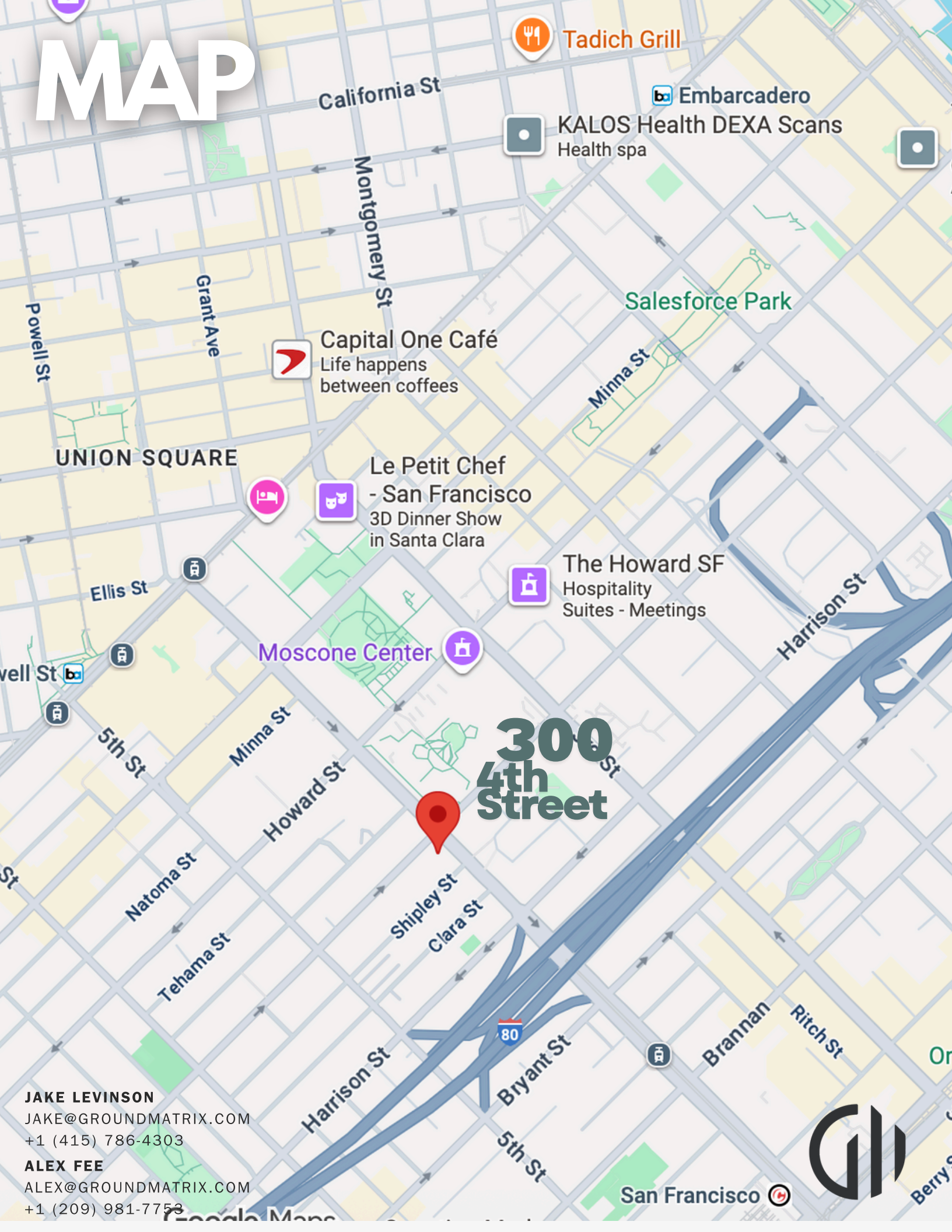


JAKE LEVINSON
JAKE@GROUNDMATRIX.COM
+1 (415) 786-4303

ALEX FEE
ALEX@GROUNDMATRIX.COM
+1 (209) 981-7753



MAP

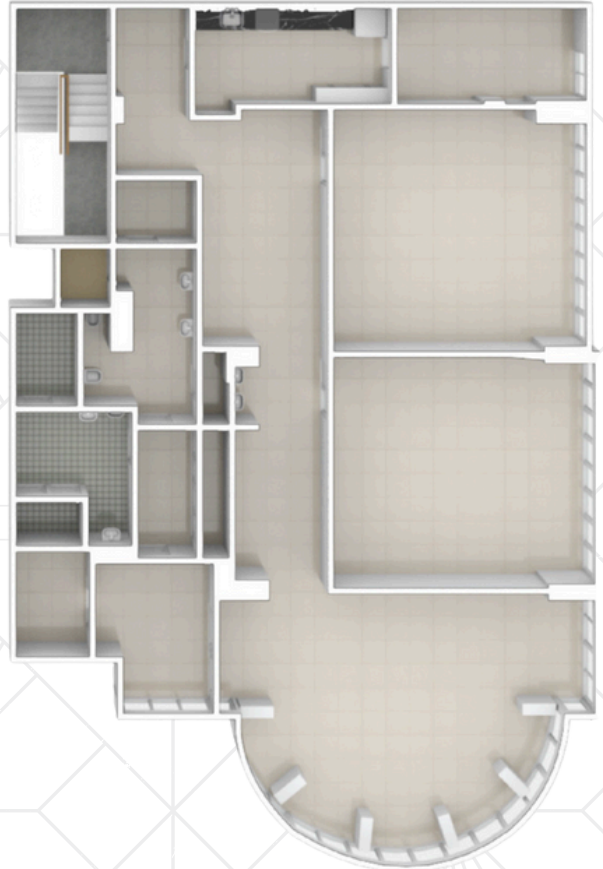
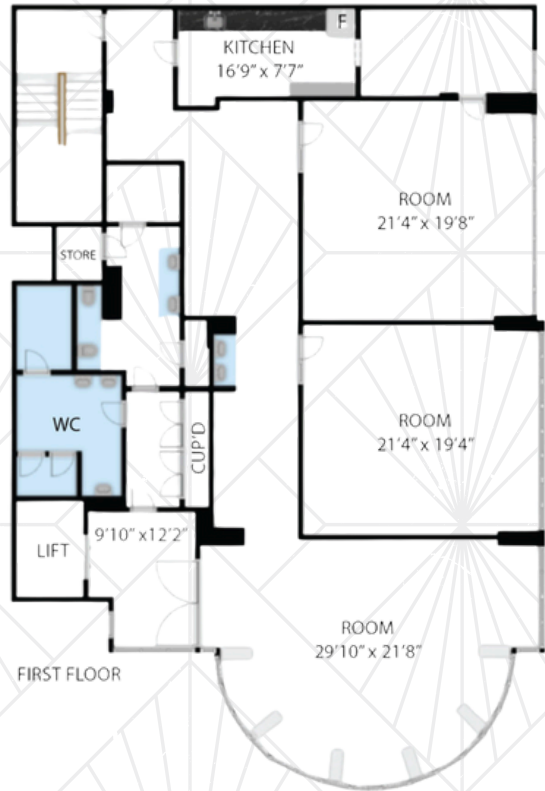
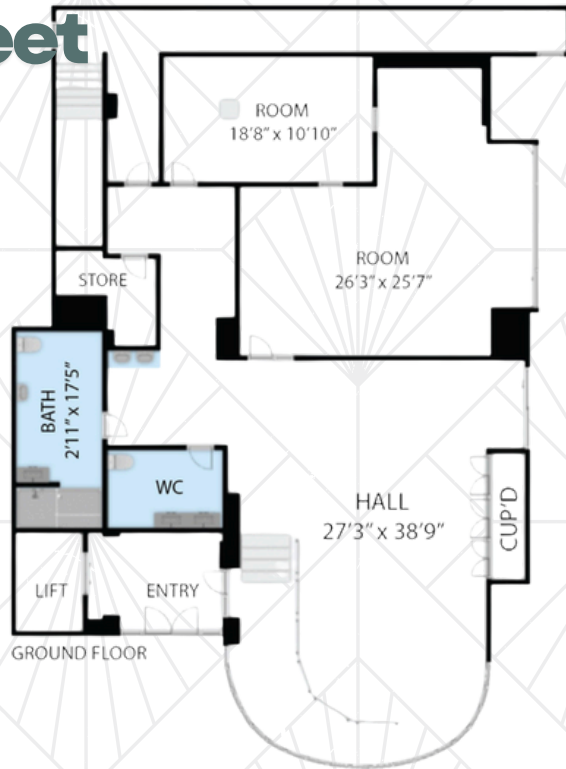


JAKE LEVINSON
JAKE@GROUNDMATRIX.COM
+1 (415) 786-4303
ALEX FEE
ALEX@GROUNDMATRIX.COM
+1 (209) 981-7753



300
4th
Street

FLOOR PLANS



JAKE LEVINSON
JAKE@GROUNDMATRIX.COM
+1 (415) 786-4303

ALEX FEE
ALEX@GROUNDMATRIX.COM
+1 (209) 981-7753



**300
4th
Street**

FOR LEASE

PLEASE CONTACT:

**JAKE LEVINSON
JAKE@GROUNDMATRIX.COM
+1 (415) 786-4303**

**ALEX FEE
ALEX@GROUNDMATRIX.COM
+1 (209) 981-7753**

