



**Office / Medical Building**  
**Fronting Highway 278**

5 Buck Island Rd  
 Bluffton, South Carolina 29910

**Property Highlights**

- Class "A" Office/Medical building fronting Highway 278 in Bluffton
- Located at the intersection of Buck Island Road and Highway 278
- Can be subdivided by Floor
- Interior elevator located at the main entrance to the building
- Floor to ceiling windows
- Covered Drive Thru
- See Floor Plan for layout of each floor
- Tenant Improvement Allowance to be determined based on Lease Term and Tenant's needs.

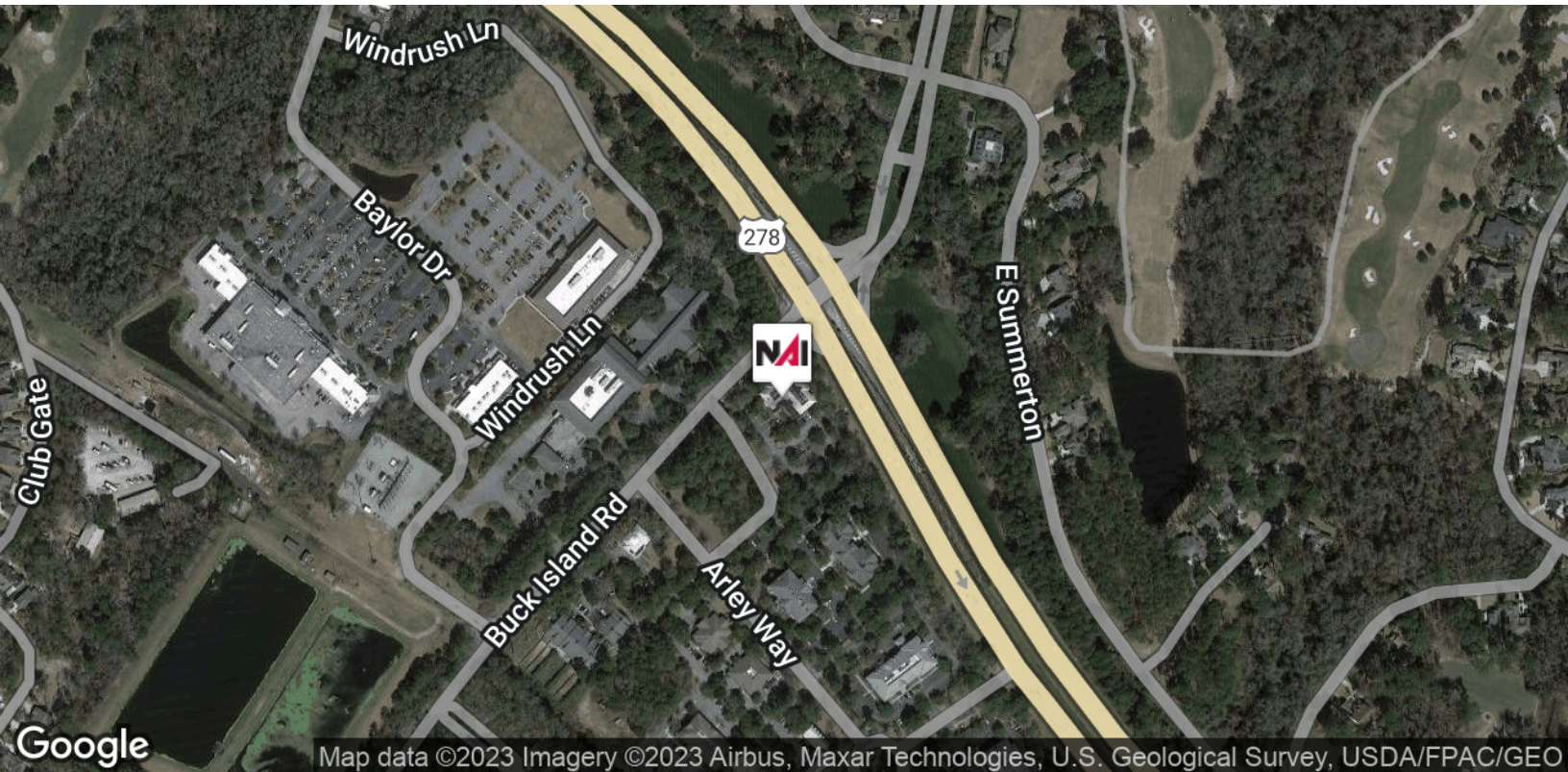
**Offering Summary**

<b>Building Size:</b>	17,525 SF
<b>Approx. SF 1st Floor:</b>	8,725 SF
<b>Approx. SF 2nd Floor:</b>	8,800 SF
<b>Lease Rate:</b>	\$25.00 PSF (NNN)
<b>Lease Term:</b>	5+ Years
<b>Annual Increases:</b>	3%
<b>Parking:</b>	On-Site
<b>Property Type:</b>	Office / Medical

**For More Information**

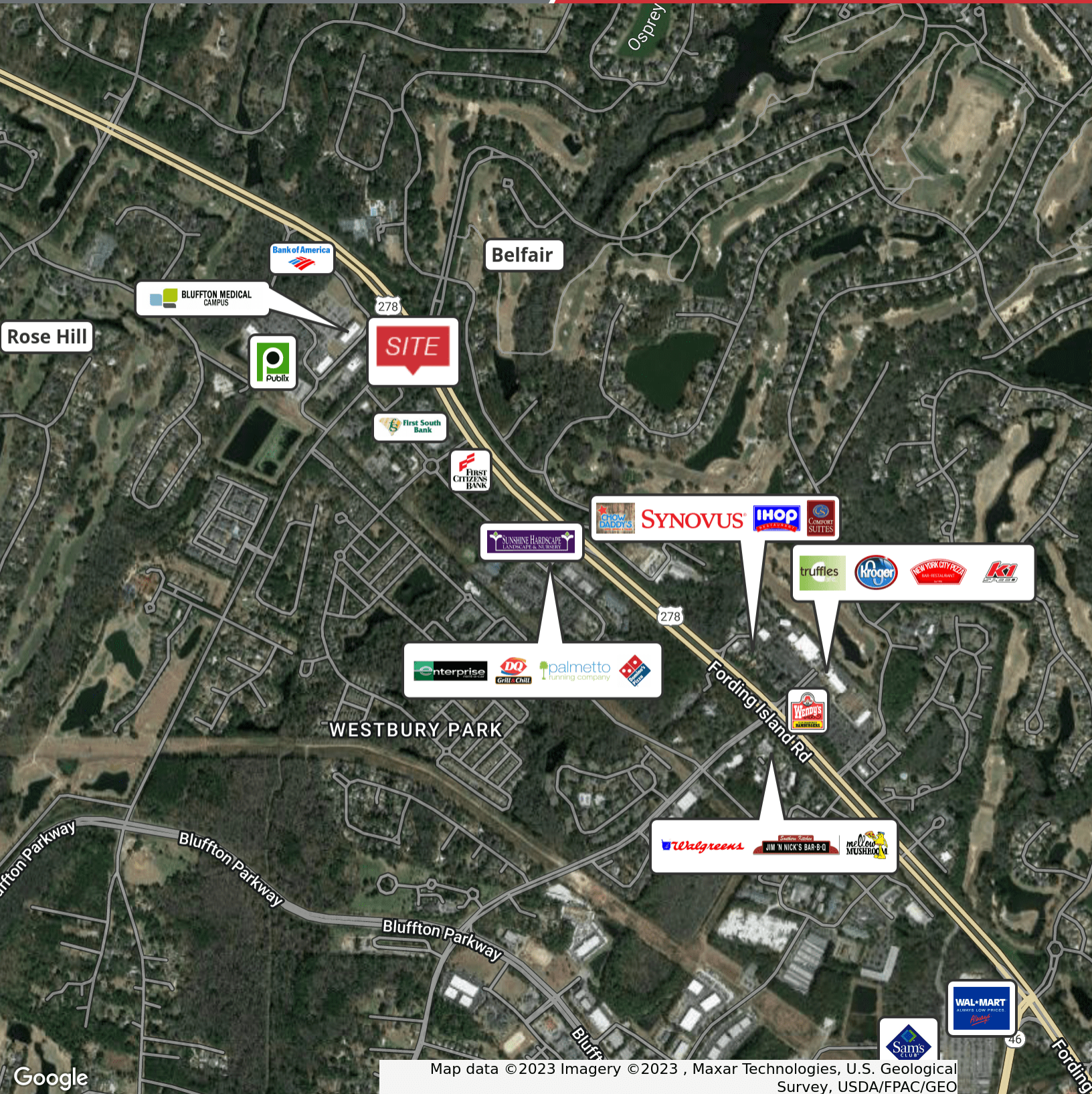
**Baker Wilkins**  
 O: 843 837 4460 x2  
 baker@naicarolinacharter.com

We obtained the information above from sources we believe to be reliable. However, we have not verified its accuracy and make no guarantee, warranty or representation about it. It is submitted subject to the possibility of errors, omissions, change of price, rental or other conditions, prior sale, lease or financing, or withdrawal without notice. We include projections, opinions, assumptions or estimates for example only, and they may not represent current or future performance of the property. You and your tax and legal advisors should conduct your own investigation of the property and transaction.



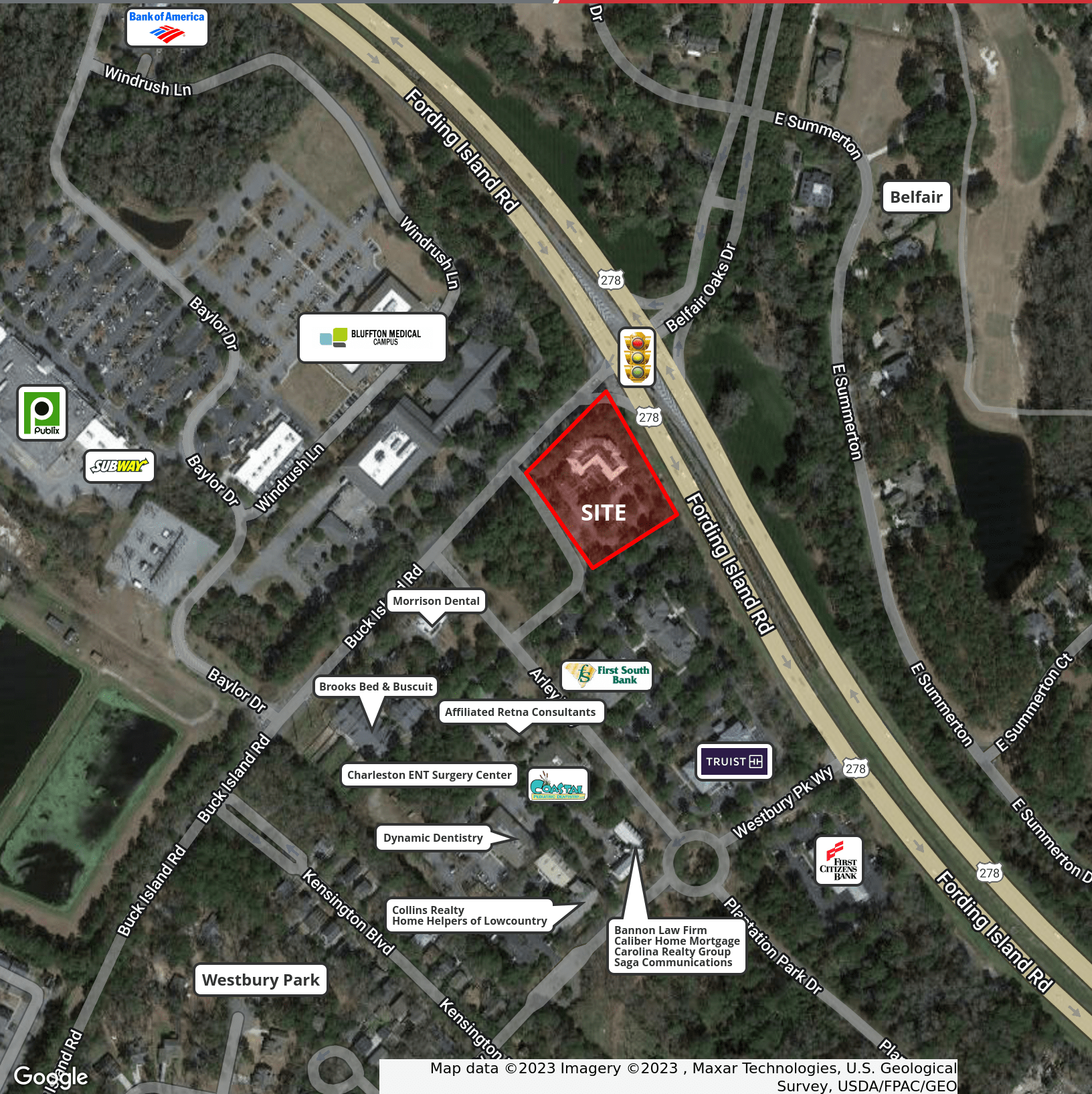
We obtained the information above from sources we believe to be reliable. However, we have not verified its accuracy and make no guarantee, warranty or representation about it. It is submitted subject to the possibility of errors, omissions, change of price, rental or other conditions, prior sale, lease or financing, or withdrawal without notice. We include projections, opinions, assumptions or estimates for example only, and they may not represent current or future performance of the property. You and your tax and legal advisors should conduct your own investigation of the property and transaction.

1227 May River Road, Suite 100  
Bluffton, SC 29910  
843 837 4460 tel  
naicarolinacharter.com

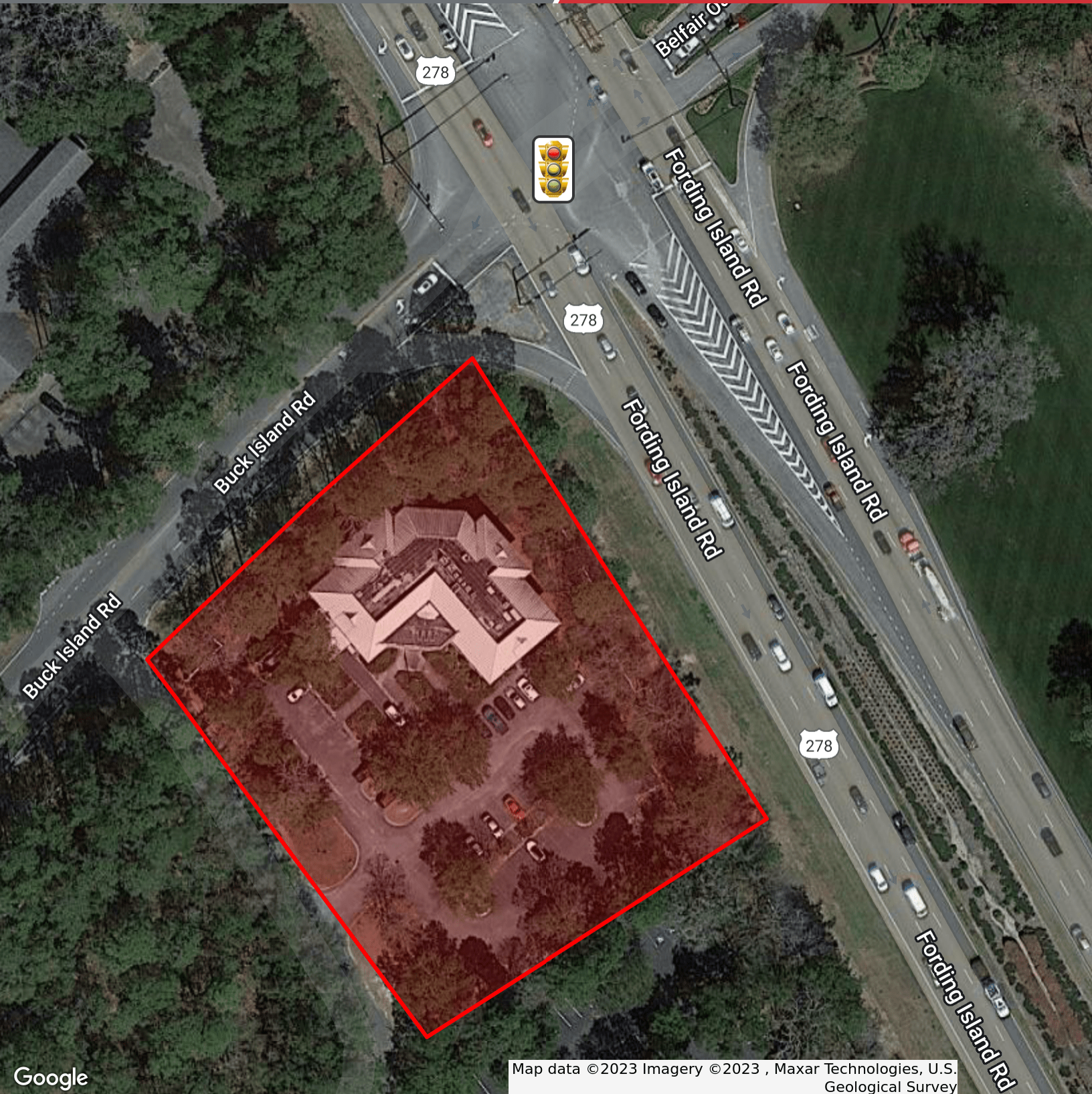


We obtained the information above from sources we believe to be reliable. However, we have not verified its accuracy and make no guarantee, warranty or representation about it. It is submitted subject to the possibility of errors, omissions, change of price, rental or other conditions, prior sale, lease or financing, or withdrawal without notice. We include projections, opinions, assumptions or estimates for example only, and they may not represent current or future performance of the property. You and your tax and legal advisors should conduct your own investigation of the property and transaction.

1227 May River Road, Suite 100  
Bluffton, SC 29910  
843 837 4460 tel  
naicarolinacharter.com



Map data ©2023 Imagery ©2023 , Maxar Technologies, U.S. Geological Survey, USDA/FPAC/GEO



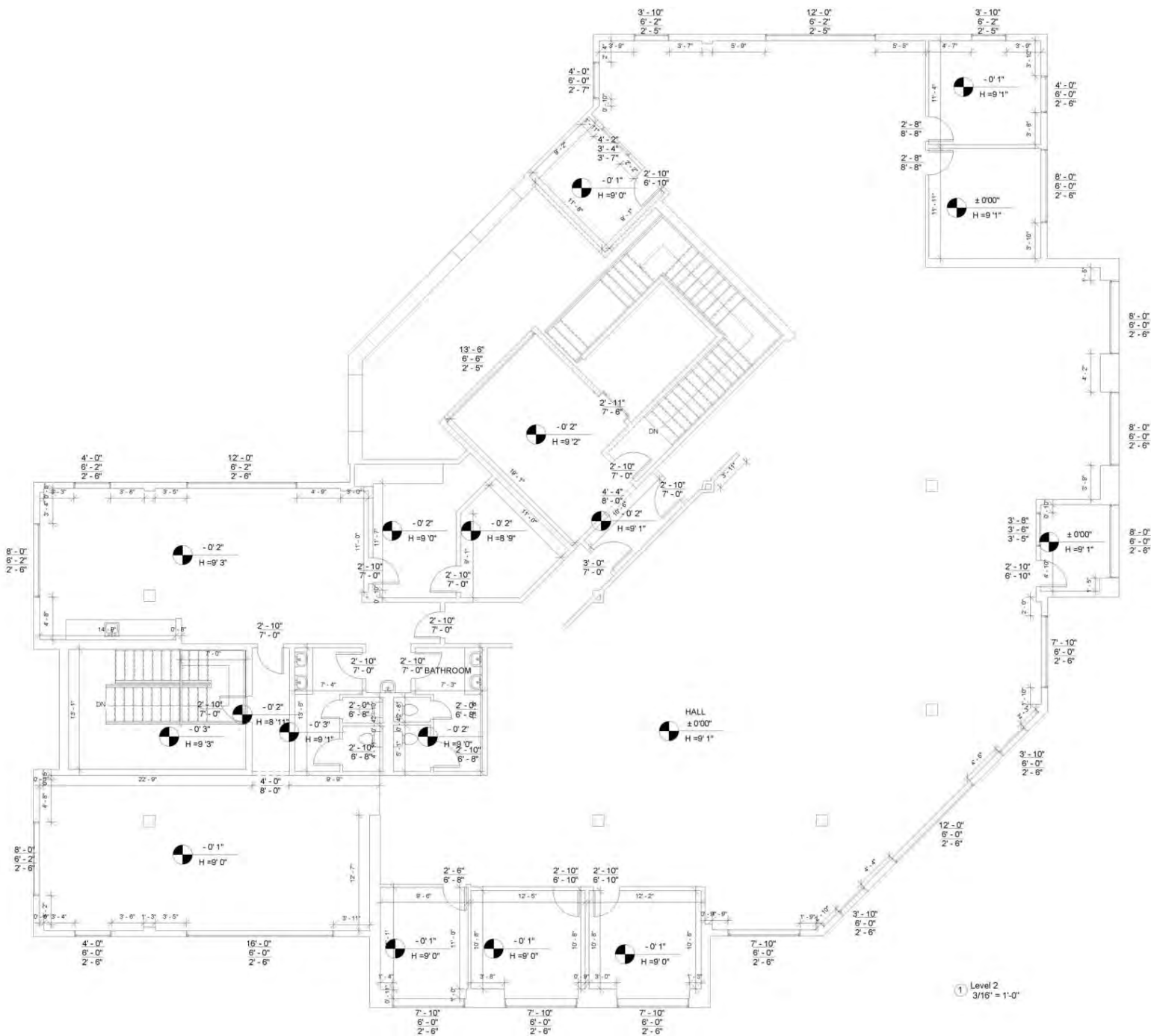
Google

Map data ©2023 Imagery ©2023 , Maxar Technologies, U.S. Geological Survey

We obtained the information above from sources we believe to be reliable. However, we have not verified its accuracy and make no guarantee, warranty or representation about it. It is submitted subject to the possibility of errors, omissions, change of price, rental or other conditions, prior sale, lease or financing, or withdrawal without notice. We include projections, opinions, assumptions or estimates for example only, and they may not represent current or future performance of the property. You and your tax and legal advisors should conduct your own investigation of the property and transaction.

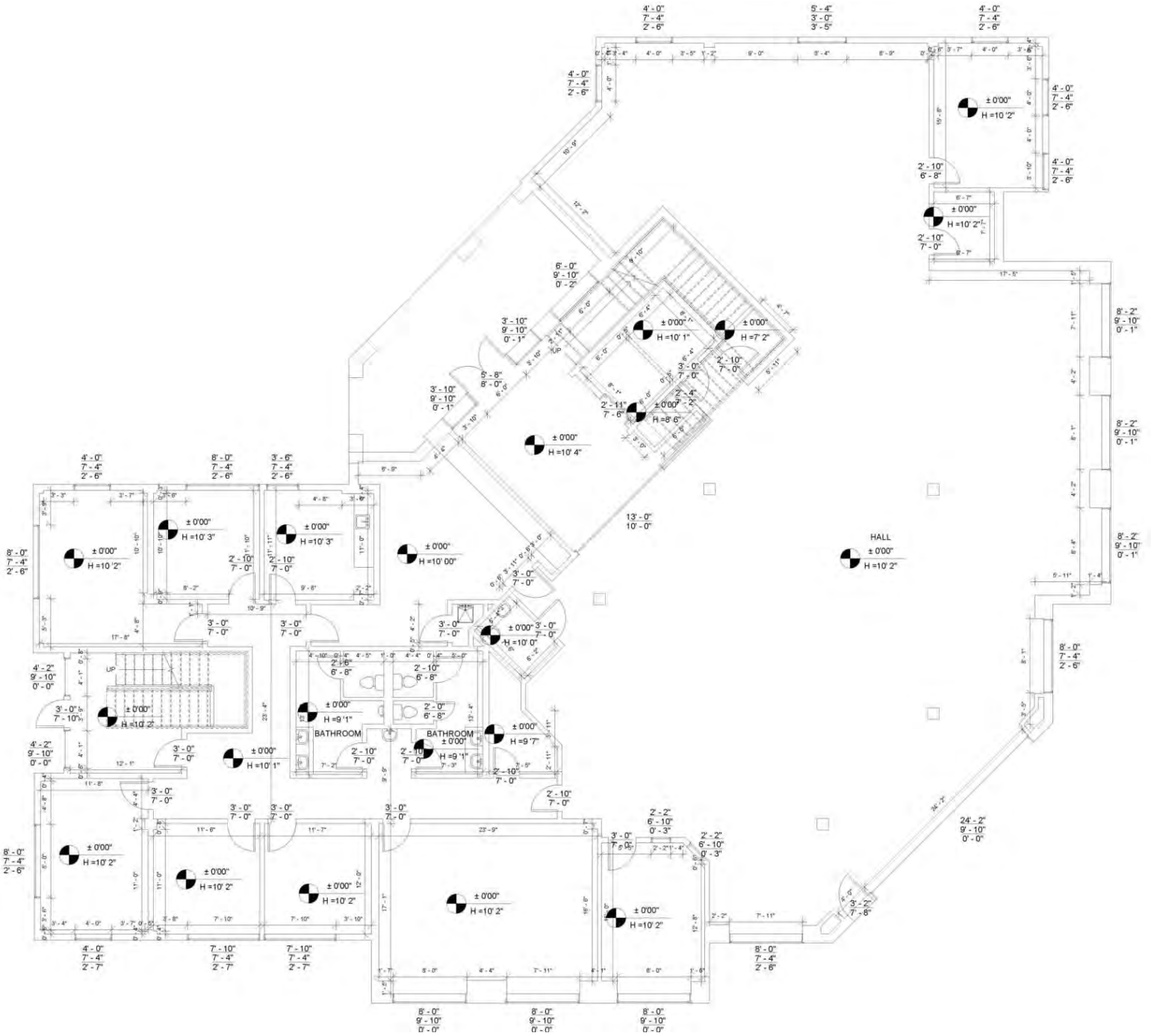
1227 May River Road, Suite 100  
Bluffton, SC 29910  
843 837 4460 tel  
naicarolinacharter.com

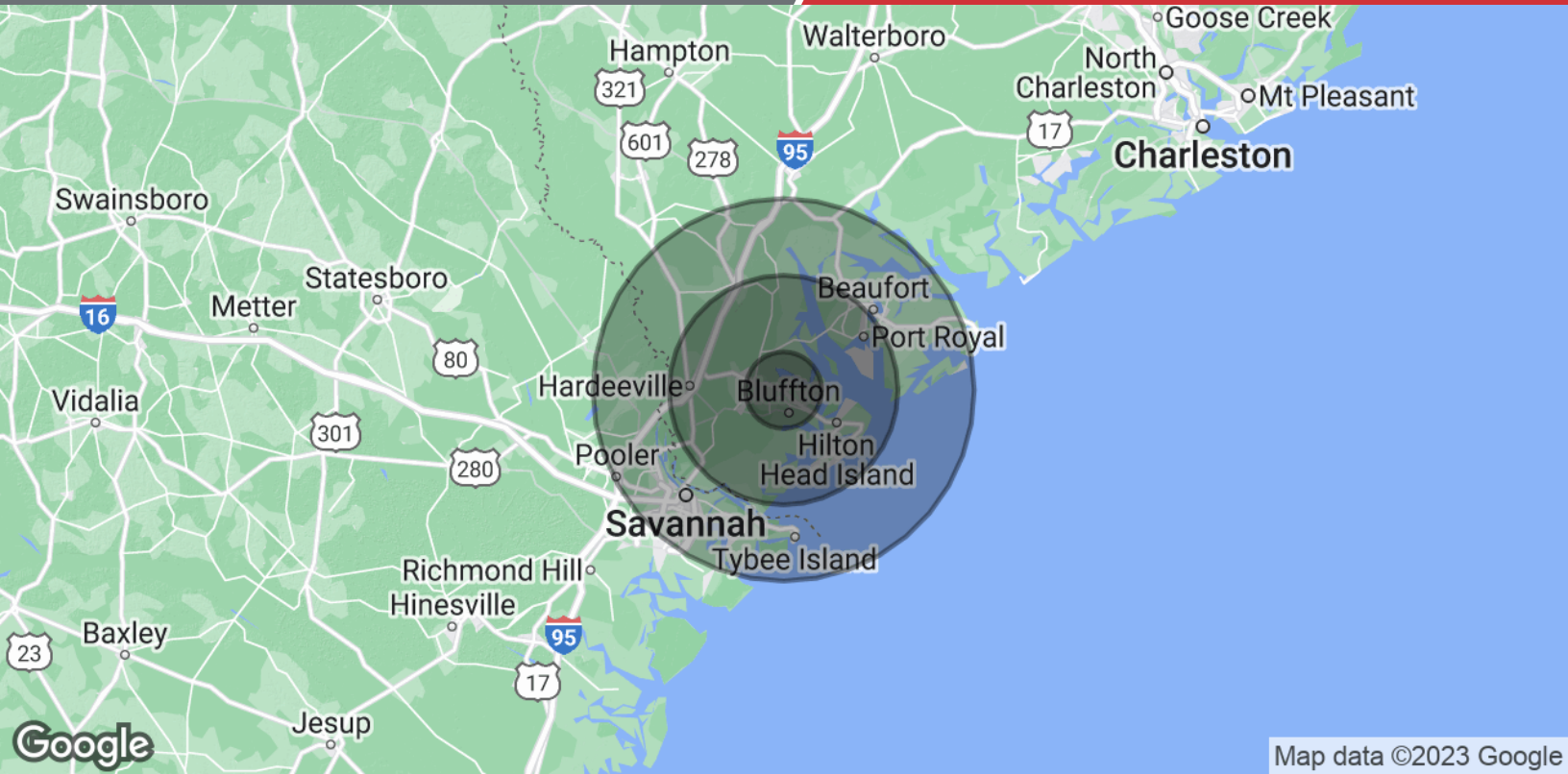




We obtained the information above from sources we believe to be reliable. However, we have not verified its accuracy and make no guarantee, warranty or representation about it. It is submitted subject to the possibility of errors, omissions, change of price, rental or other conditions, prior sale, lease or financing, or withdrawal without notice. We include projections, opinions, assumptions or estimates for example only, and they may not represent current or future performance of the property. You and your tax and legal advisors should conduct your own investigation of the property and transaction.

1227 May River Road, Suite 100  
Bluffton, SC 29910  
843 837 4460 tel  
naicarolinacharter.com





Map data ©2023 Google

<b>Population</b>	<b>5 Miles</b>	<b>15 Miles</b>	<b>25 Miles</b>
Total Population	40,172	165,439	437,102
Average Age	44.0	46.7	41.1
Average Age (Male)	44.1	46.0	39.6
Average Age (Female)	43.4	47.7	42.4
<b>Households &amp; Income</b>	<b>5 Miles</b>	<b>15 Miles</b>	<b>25 Miles</b>
Total Households	17,940	88,998	207,282
# of Persons per HH	2.2	1.9	2.1
Average HH Income	\$84,019	\$75,279	\$71,263
Average House Value	\$341,359	\$371,633	\$282,651

\* Demographic data derived from 2020 ACS - US Census