

Large Development Tract. Sevierville, TN

Land+Improvements

96.766 Acres | \$65,106 / AC



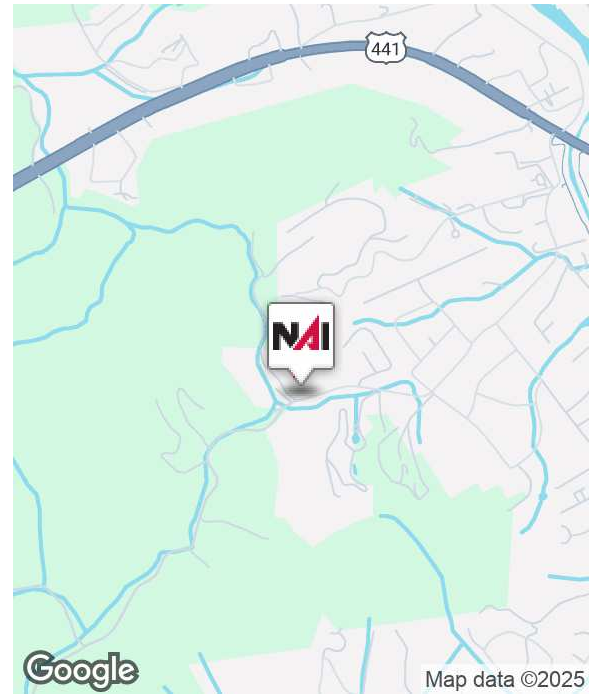
Large Acreage Tract With Two Residential Units

731 Hardin Lane
Sevierville, Tennessee 37862

Property Highlights

- Prime location in tourist-intensive Smoky Mountains region
- Potential for residential development of single family homes, multifamily and tourist short-term-rental homes
- Access to utilities and infrastructure
- Versatile land suitable for various development options
- Proximity to amenities and services
- Serene and picturesque natural surroundings
- Favorable zoning regulations
- Ideal for land banking or residential investment
- Close to major transportation routes
- Opportunity for creating a unique residential community

Property Description



For more information

David Gothard, CCIM

O: 865 453 8111
dgothard@koellamoore.com

Michael Moore

O: 865 531 6400
mmoore@koellamoore.com



963 Dolly Parton Parkway
Sevierville, TN 37862
865 453 8111 tel
koellamoore.com



For Sale - 731 Hardin Lane

Additional Photos

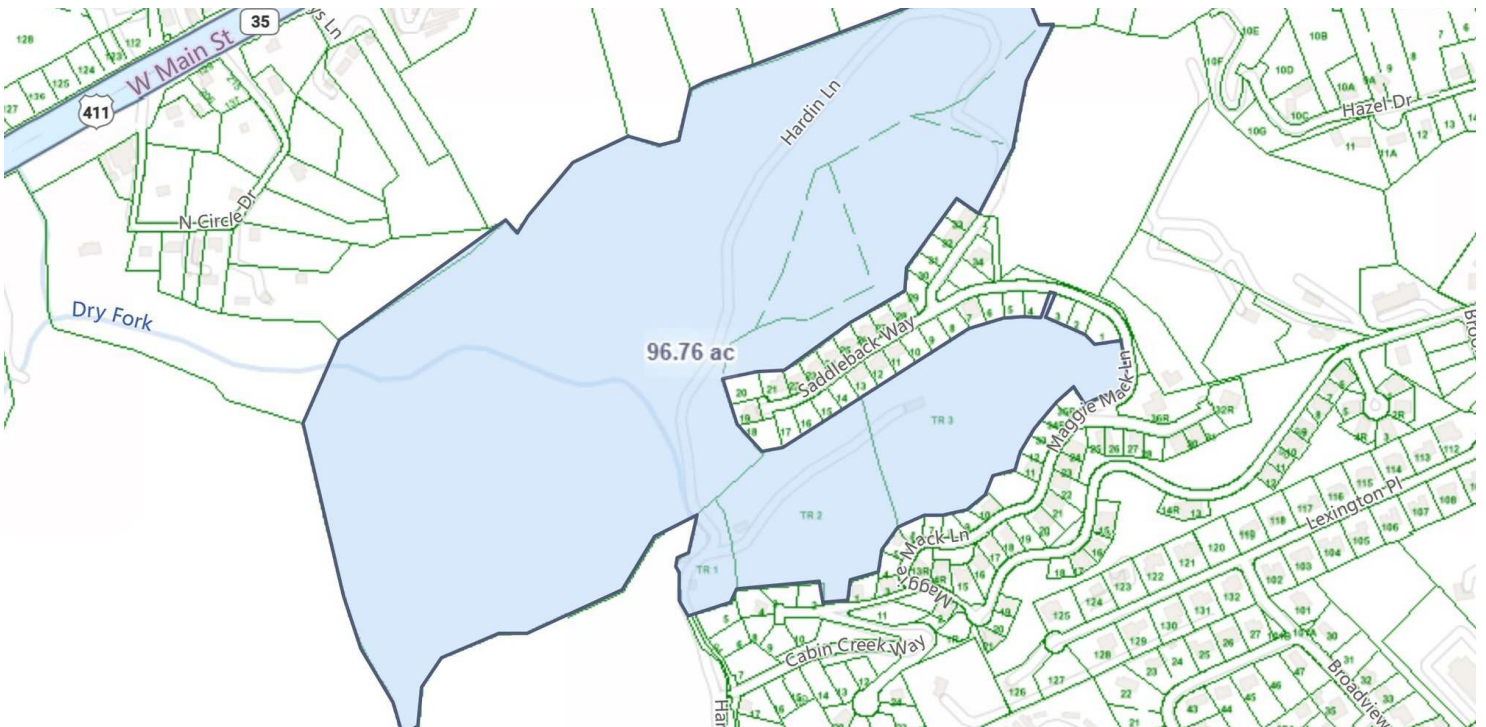
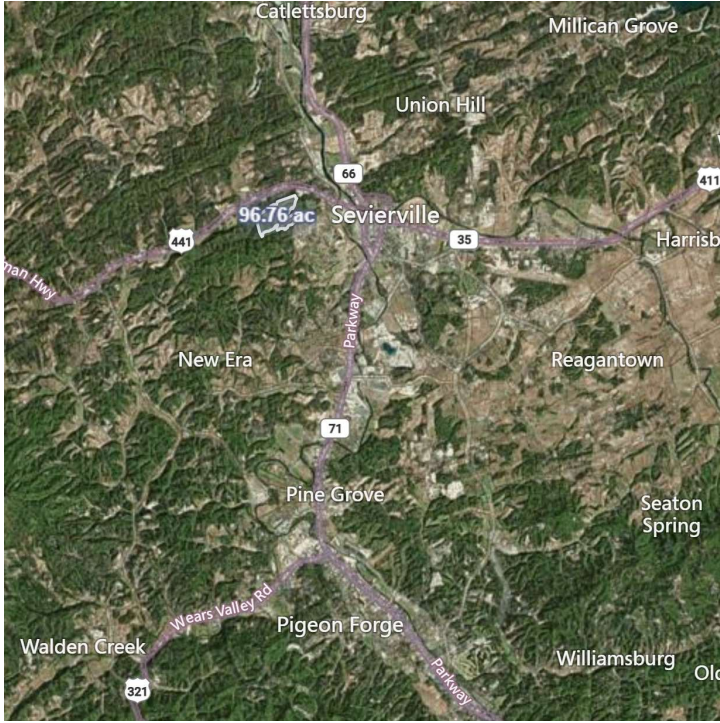
96.766 Acres | \$65,106 / AC



For Sale - 731 Hardin Lane

Additional Photos

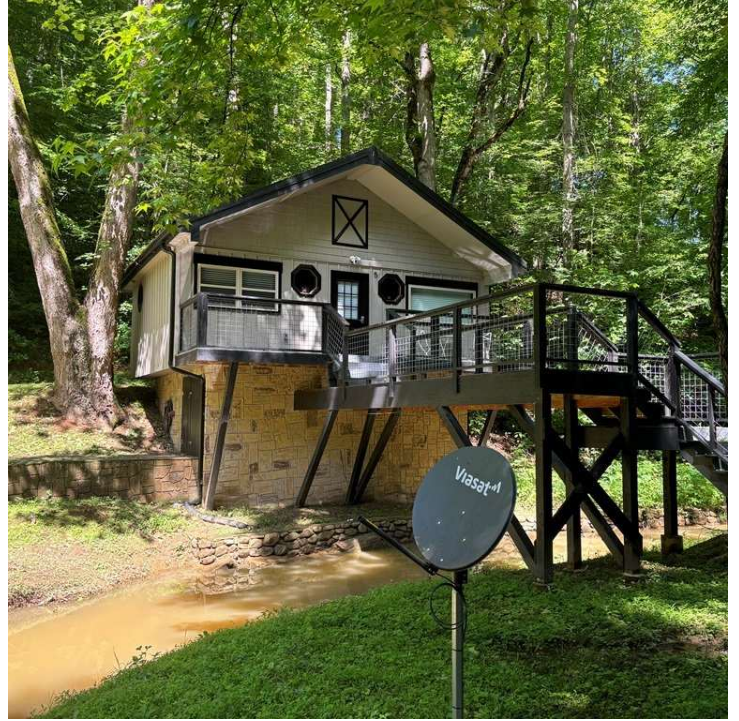
96.766 Acres | \$65,106 / AC



For Sale - 731 Hardin Lane

Additional Photos

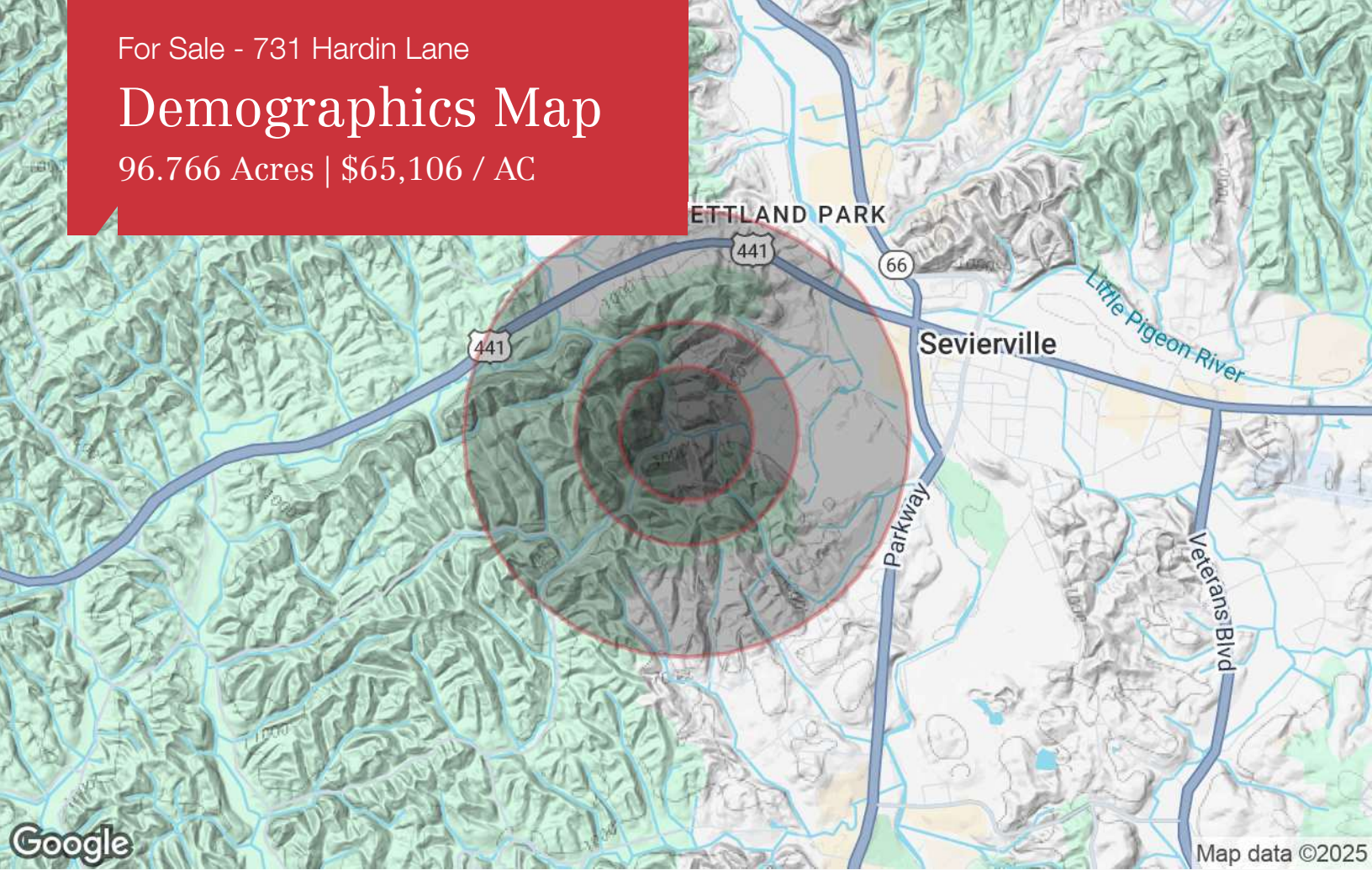
96.766 Acres | \$65,106 / AC



For Sale - 731 Hardin Lane

Demographics Map

96.766 Acres | \$65,106 / AC



	0.3 Miles	0.5 Miles	1 Mile
Population			
TOTAL POPULATION	287	512	2,683
MEDIAN AGE	42	42	43
MEDIAN AGE (MALE)	40	40	40
MEDIAN AGE (FEMALE)	44	44	46
Households & Income			
TOTAL HOUSEHOLDS	132	236	1,244
# OF PERSONS PER HH	2.2	2.2	2.2
AVERAGE HH INCOME	\$88,798	\$87,349	\$74,642
AVERAGE HOUSE VALUE	\$350,214	\$346,948	\$321,533
Race			
% WHITE	82.5%	82.8%	85.9%
% BLACK	1.9%	2.0%	1.6%
% ASIAN	2.3%	2.2%	2.2%
% HAWAIIAN	0.0%	0.0%	0.0%
% INDIAN	0.3%	0.4%	0.7%
% OTHER	13.0%	12.6%	9.7%
Ethnicity			
% HISPANIC	20.2%	19.5%	16.0%

* Demographic data derived from 2020 ACS - US Census