



## 1111 CHURCH AVE, BROOKLYN, NY 11218



### PROPERTY DETAILS

#### LOCATION INFO

BTW. STRATFORD RD &  
WESTMINSTER DR

#### NEIGHBORHOOD

PROSPECT PARK SOUTH

#### BLOCK & LOT

05072-0036

#### ZONING

R6A, C2-4

#### SIZE

1,500 SF

### ASKING PRICE

# \$5,500/M

### CONTACT EXCLUSIVE BROKER

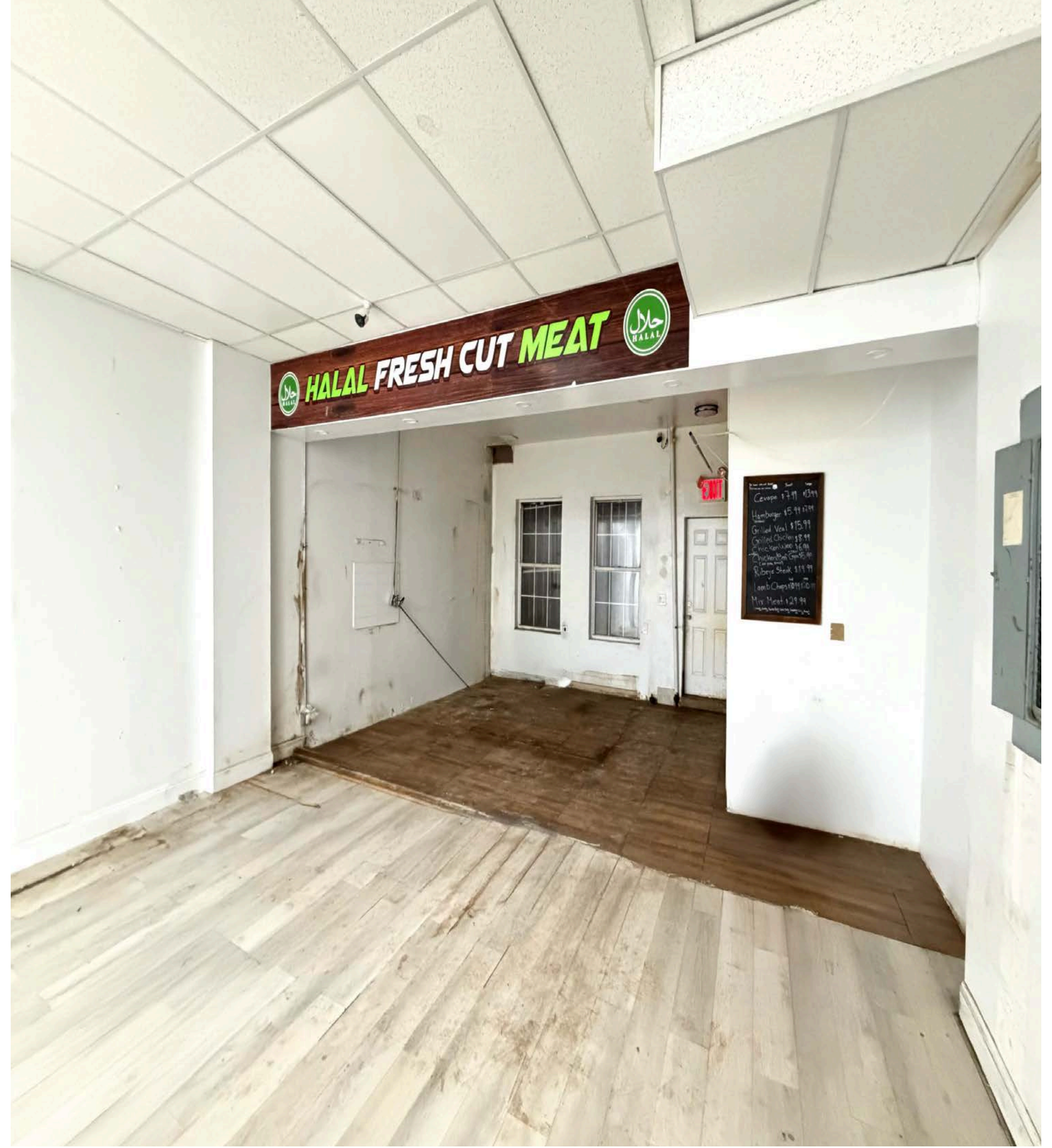
ARSEN ATBASHYAN

917-939-3760

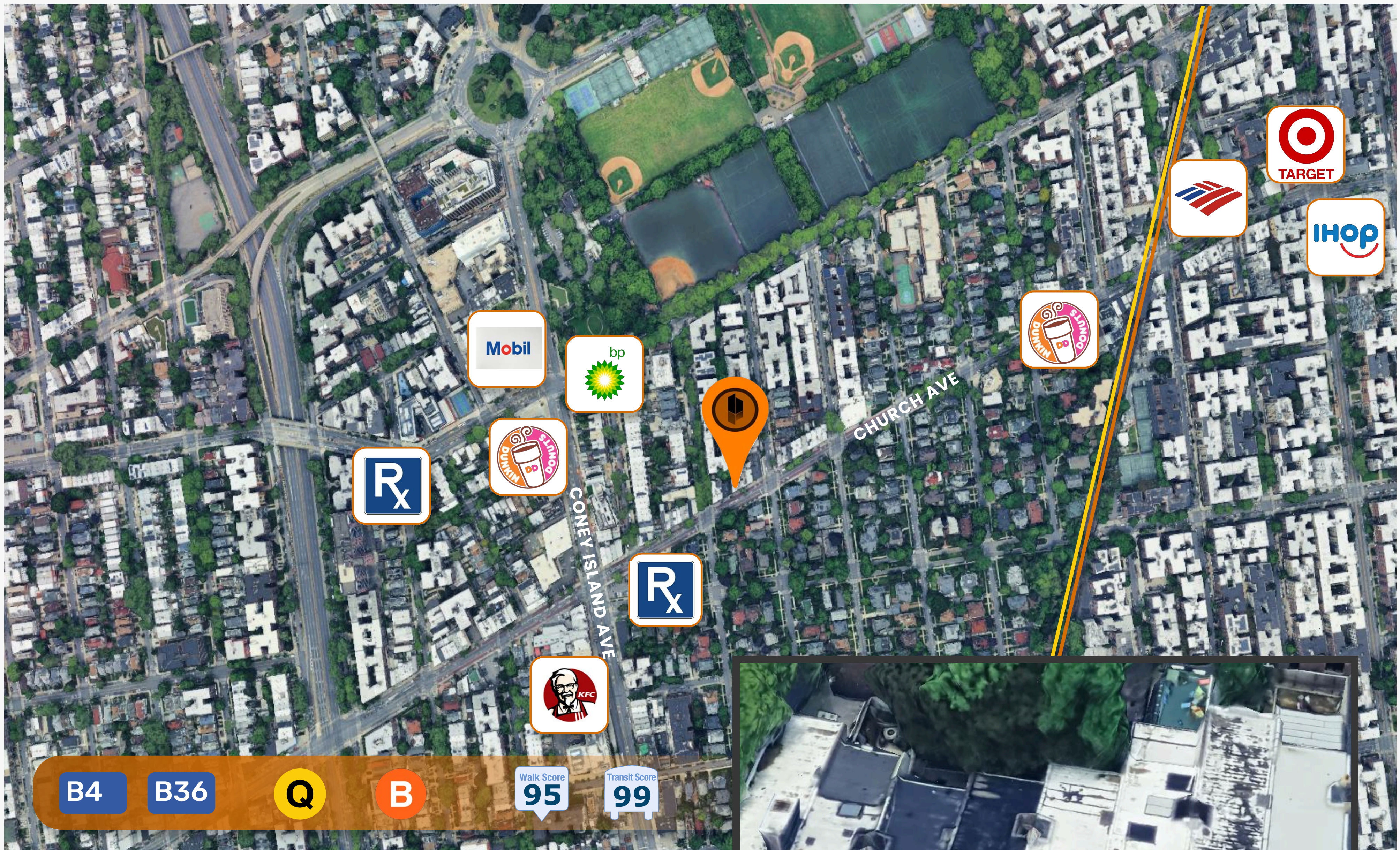
ARSEN@COMMERCIALACQ.COM

FOR MORE INFORMATION ON THIS PROPERTY PLEASE CALL OUR OFFICE: **718.517.8700**





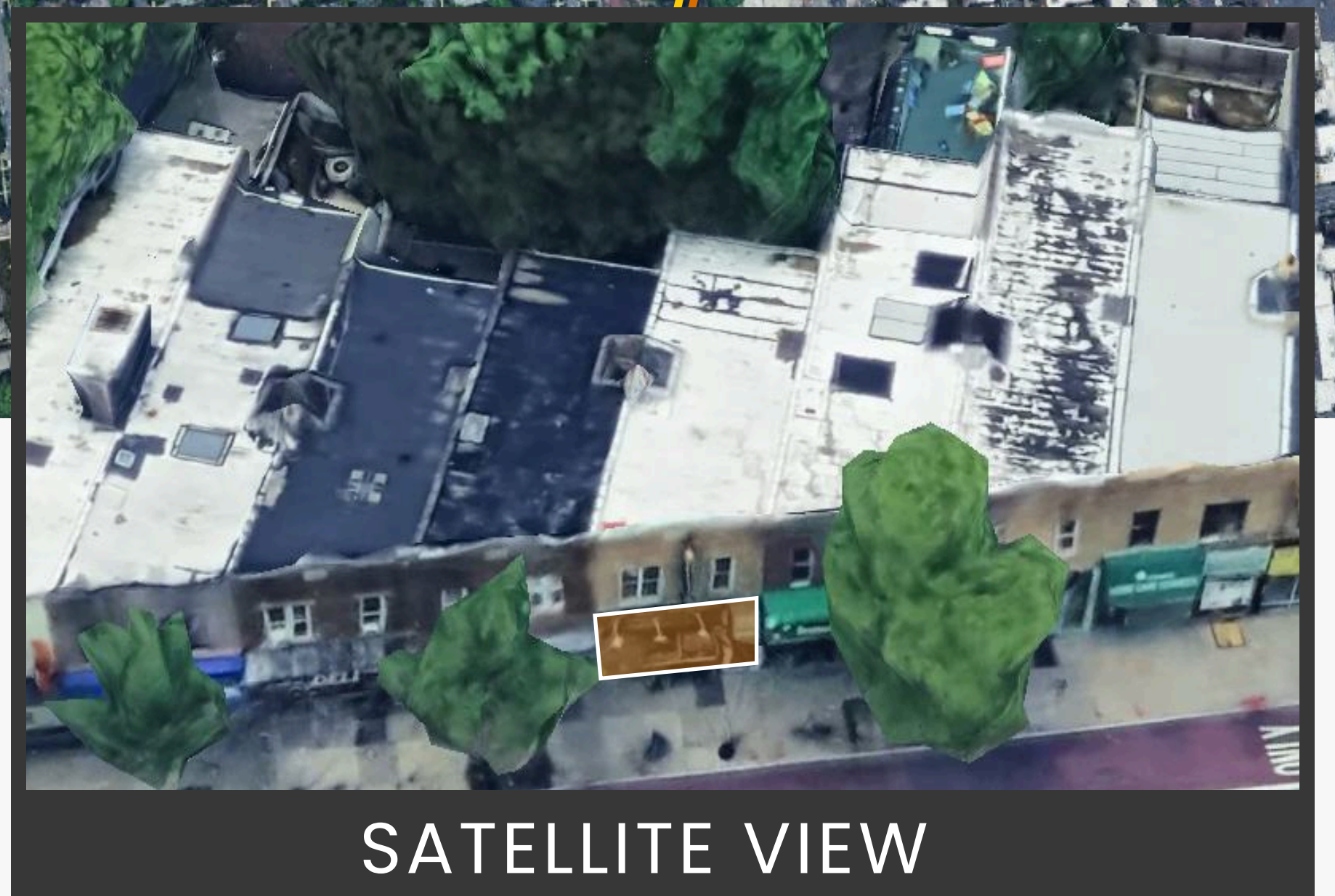




1111 CHURCH AVE,  
BROOKLYN, NY 11218

## PROPERTY COMMENTS

- 20' FRONTAGE
- GREAT SIGNAGE OPPORTUNITY
- BASEMENT INCLUDED
- LOCATED IN A HIGH-TRAFFIC AREA
- CLOSE TO PUBLIC TRANSPORTATION
- SURROUNDED BY MAJOR BUSINESSES



## NEIGHBOURING TENANTS & AMENITIES



## CONTACT EXCLUSIVE BROKER

ARSEN ATBASHYAN  
917-939-3760  
ARSEN@COMMERCIALACQ.COM

**FOR MORE INFORMATION ON THIS PROPERTY PLEASE CALL OUR OFFICE: 718.517.8700**

COMMERCIAL ACQUISITIONS INC. HAS MADE EVERY EFFORT TO OBTAIN THE INFORMATION REGARDING THESE LISTINGS FROM SOURCES DEEMED RELIABLE. HOWEVER, WE CANNOT WARRANT THE COMPLETE ACCURACY THEREOF SUBJECT TO ERRORS, OMISSIONS, CHANGE OF PRICE, RENTAL OR OTHER CONDITIONS, PRIOR SALE, LEASE OR FINANCING, OR WITHDRAWAL WITHOUT NOTICE. WE RECOMMEND TO THE BUYER THAT ANY INFORMATION, WHICH IS OF SPECIAL INTEREST, SHOULD BE OBTAINED THROUGH INDEPENDENT VERIFICATION. ALL MEASUREMENTS MAY BE APPROXIMATE.