



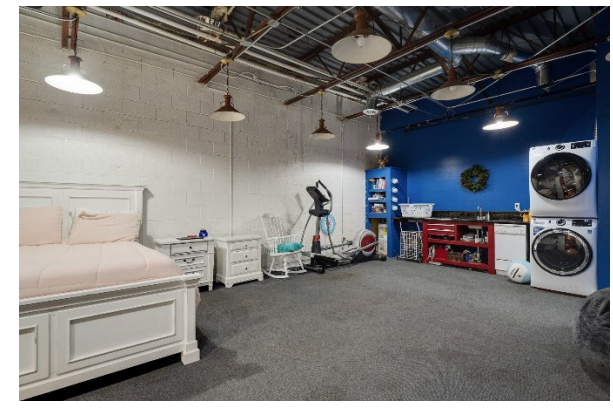
1575 Cherry Road “A” - This building is currently only use for storage. We do not have any interior photos.

1567 Cherry Road “B” – This is a former auto shop/service station. Currently used for storage. The building was built in 1955 and contains approximately 1,376 square feet. We do not have any interior photos of this one.

1541 Cherry Road “C” – This building was built in 1977, contains approximately 7,528 square feet of space. About 50% of the building is set up as office space with a front entrance/lobby and private offices, conference room, etc. The building features a rear shop or garage space with two grade level doors and most unique, the building features 3 spaces the owner currently uses as dwelling units.

1557 Cherry Road “D” – This building is used as the owner’s central sales office and design studio. This is where they meet with clients and designers and coordinate dispatch of delivery trucks, etc. The building was built in 1972 and contains approximately 960 square feet.

Building "C"



Building "D"



Building C Floor Plan

