



OVERLAND PLAZA

2566 OVERLAND AVENUE

OFFICE / MEDICAL SPACE FOR LEASE

OVERLAND PLAZA

BUILDING HIGHLIGHTS



Seven story building
consisting of
approximately 50,000 SF
with great views



Location provides
quick access to 405
and 10 Freeways and
Metro



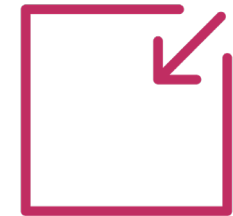
Walking distance to
excellent restaurant and
retail amenities



On-site property management



Medical uses
allowed



Move-In ready spec suites

OVERLAND PLAZA

Premises	50,000 SF
Asking Rate:	Negotiable
Lease Term:	3 - 10 years
	3/1,000
Parking	\$132 unreserved \$165 reserved

PROPERTY DETAILS

SUITE	RSF	DESCRIPTION
100	5,046	Ideal for medical, retail or office use. Eyebrow and building top signage available.
500**	3,640	Exterior offices along window line, large open bullpen area and kitchenette. New creative suite with exposed ceilings. Medical allowed.
530*	2,307	5 window offices, kitchen and open area (30 days notice)
550*	1,169	2 window offices (30 days notice)
590**	1,623	3 window offices (30 days notice)
640	1,994	Three window offices, conference room, large bullpen area. New creative suite with exposed ceilings. Medical allowed,
690	1,094	Two window offices, conference room and reception area - (30 days notice)

*Contiguous for 3,496 SF

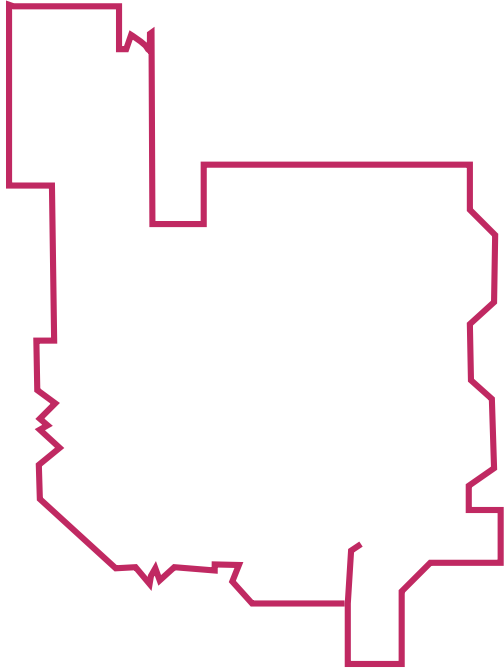
**Contiguous for 4,230 SF



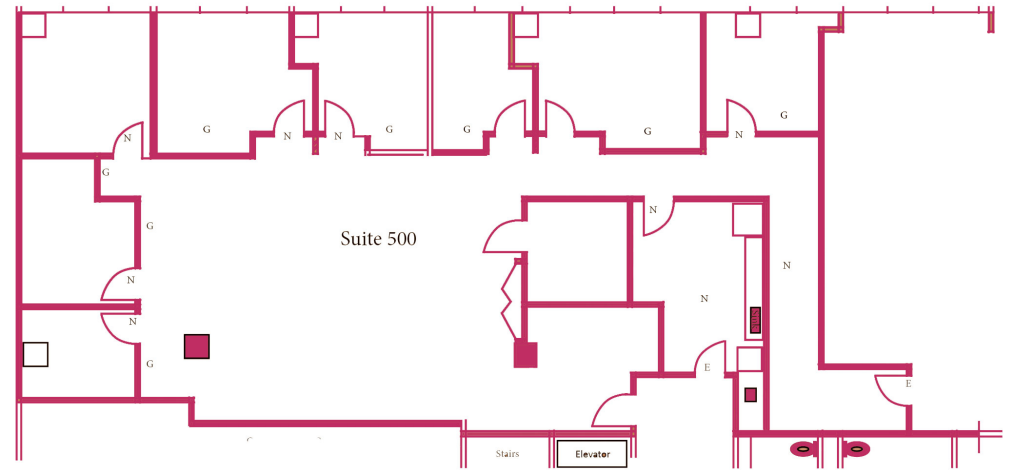


OVERLAND PLAZA

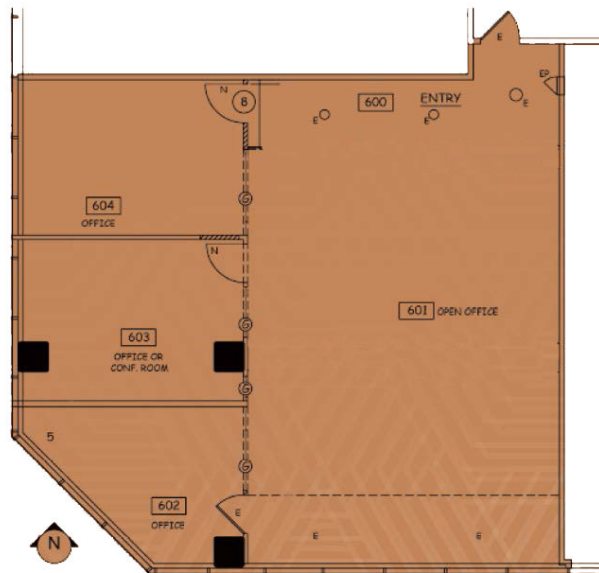
FLOOR PLANS



Suite 100
5,046 SF (Raw Space)



Suite 500
3,640 SF



Suite 640
1,994 SF



us bank

OVERLAND PLAZA

 **madison**
PARTNERS

JOE KING
310.383.0633

jkking@madisonpartners.net
License No. 01195833

MadisonPartners.Net

©2024 Madison Partners, DRE License Number 00978067. The information herein is for informational purposes only and is not intended to constitute an offer, recommendation, or solicitation of any financial product. It is your responsibility to independently confirm its accuracy and completeness. Any projections, opinions, assumptions, or estimates are for example only and do not represent the current or future performance of the property. The value of this transaction to you depends on many other factors which should be evaluated by your tax, financial and legal advisors. You and your advisors should conduct a careful, independent investigation of the property to determine to your satisfaction the suitability of the property for your needs. Updated 12.03.24