



27888 MEADOW DRIVE UNIT B2

Evergreen, CO 80439



BUILDING SF

1,153 SF



PARKING

AMPLE

PROPERTY HIGHLIGHTS

- - 1,153 SF retail/office condo
- - Flexible C-1 zoning
- - Prime location in Downtown Evergreen
- - Ideal for various retail, office, or business uses



YEAR BUILT

1962



ZONING

C-1

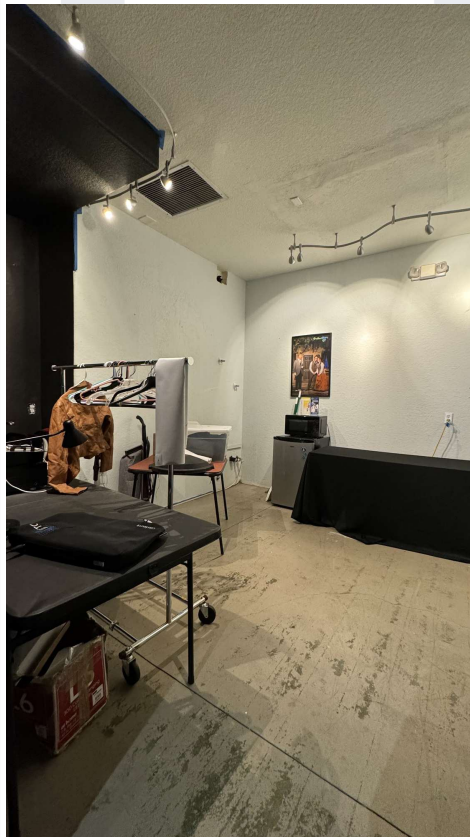
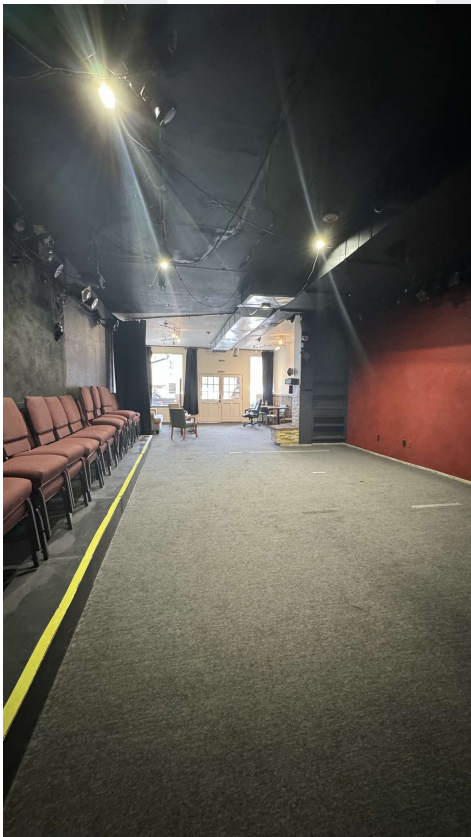
PROPERTY DESCRIPTION

Introducing a prime opportunity in Downtown Evergreen. This 1,153 SF retail/office condo, built in 1962, and zoned C-1, offers a solid foundation for your business. With its prime location and versatile zoning, this property holds immense potential for a wide range of retail, office, or business uses. Don't miss out on this opportunity to acquire a valuable piece of real estate in this thriving market.

All information contained herein has been obtained from sources we believe to be reliable and is subject to errors, omissions, change of price, rental, prior sale, and withdrawal without notice. Any projections, opinions or estimates are subject to uncertainty and do not signify current or future property performance. No warranty or representation, express or implied, is made as to the accuracy of the information contained herein. We encourage verification of all information prior to making financial decisions.



ADDITIONAL PHOTOS



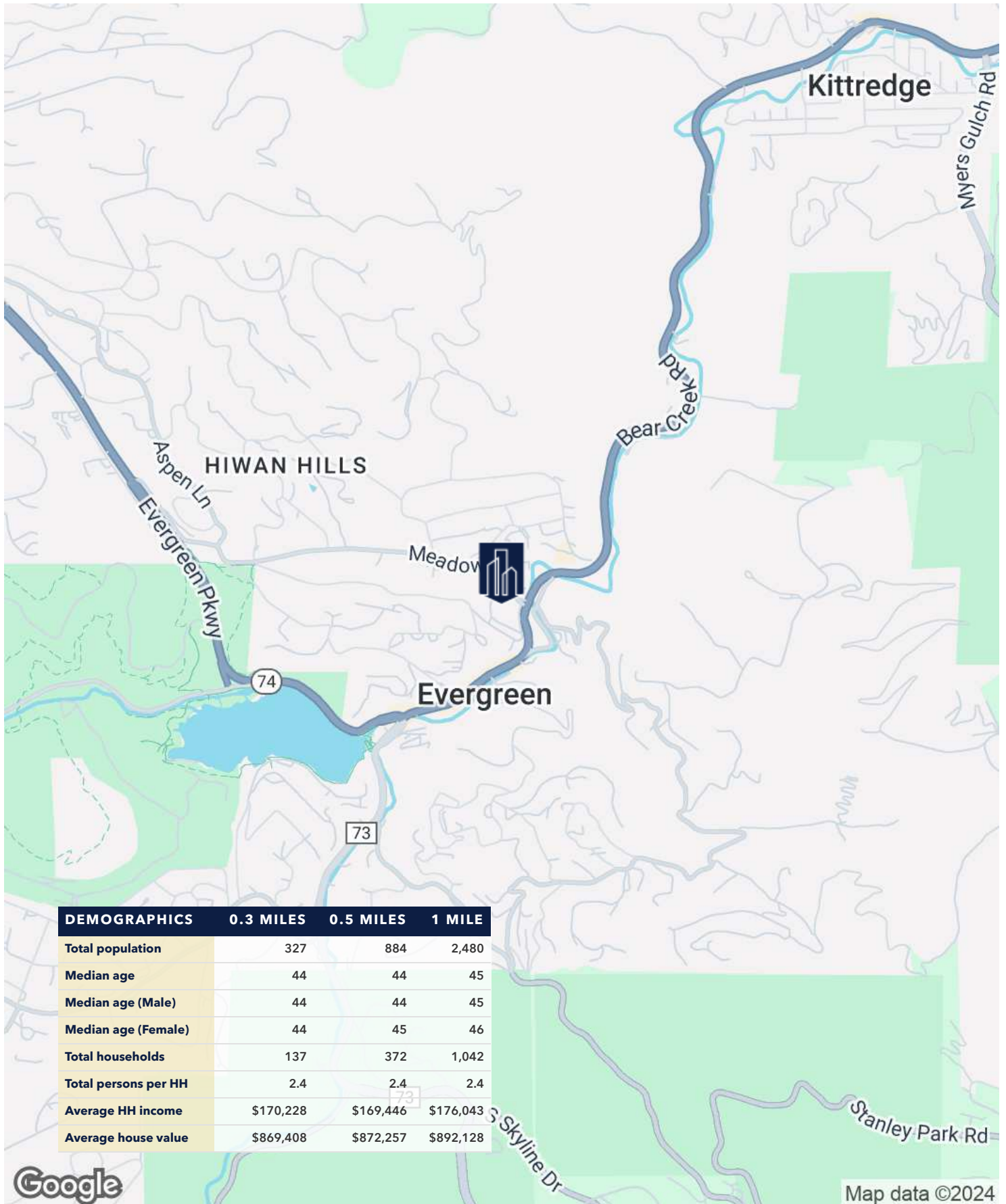
STEVE MASZTALER

303.229.3871

smasztaler@madisoncommercial.com

**MADISON
COMMERCIAL
PROPERTIES**

LOCATION MAP



STEVE MASZTALER

303.229.3871

smasztaler@madisoncommercial.com

